



---

## DESIGN CENTRE FRAMING OPTIONS CATALOGUE

### BUNGALOW TOWNHOMES & SINGLE FAMILY HOMES



The Minto Design Centre Framing Catalogue features the options and selections available to you as part of the framing portion of your Design Centre experience.

Ahead of your appointment, we encourage you to review the options outlined in this catalogue, as well as our [Design Inspirations](#) page to collect ideas to help with your selection process. Below, we have provided links to our model home virtual tours to further inspire you.

During your framing appointment, your Design Centre Consultant will review this document in detail with you to answer any questions you may have, and to work with you to select the ideal framing options for your new Minto home.



QUINTON MODEL HOME KITCHEN



NOBLE ENSUITE BATH



CLAIRMONT MODEL HOME KITCHEN



---

## STRUCTURAL OPTIONS



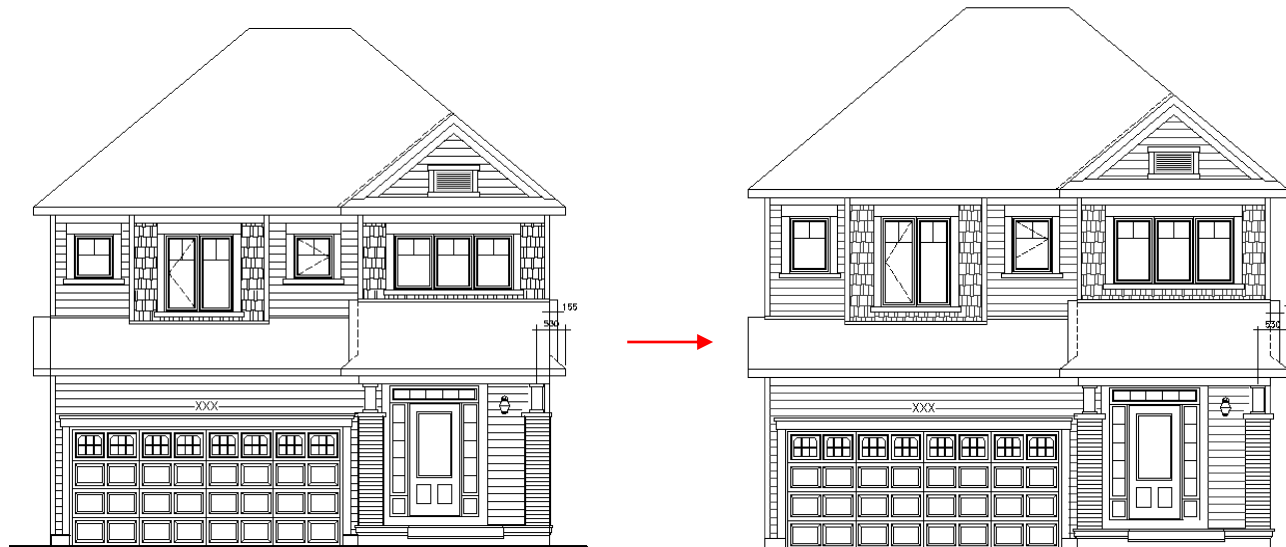
OPTIONAL - 9' CEILINGS ON 2<sup>ND</sup> FLOOR (SINGLES ONLY)



OPTIONAL - 8' DOOR HEIGHT AVAILABLE WITH HIGHER CEILINGS (SINGLES ONLY)



\*LIMITATIONS IN DOOR  
STYLE SELECTIONS





★ INCLUDED – SLIDING PATIO DOOR



OPTIONAL - TERRACE DOORS



★ INCLUDED – ONE OPERABLE WINDOW PER ROOM

OPTIONAL ADDITIONAL OPERABLE WINDOWS



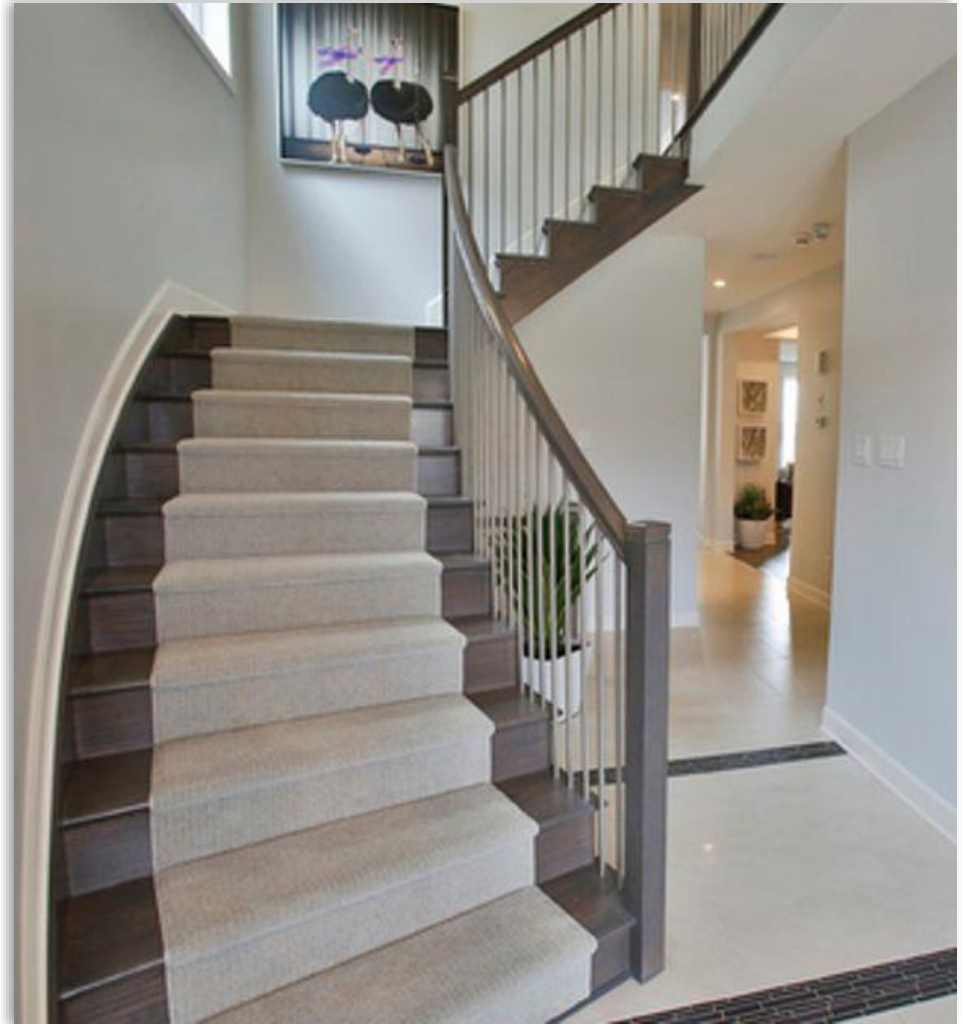
★ INCLUDED – CARPET STAIRS



OPTIONAL - ENTRY OR MUDROOM STEPS TO HARDWOOD  
(WHERE APPLICABLE)



OPTIONAL - HARDWOOD STAIR (CARPET RUNNER OFFERED SEPARATELY)  
INCLUDED MAHOGANY- OAK STAIR (MODEL SPECIFIC)



★ **INCLUDED** – LOW-WALL (MODEL SPECIFIC)



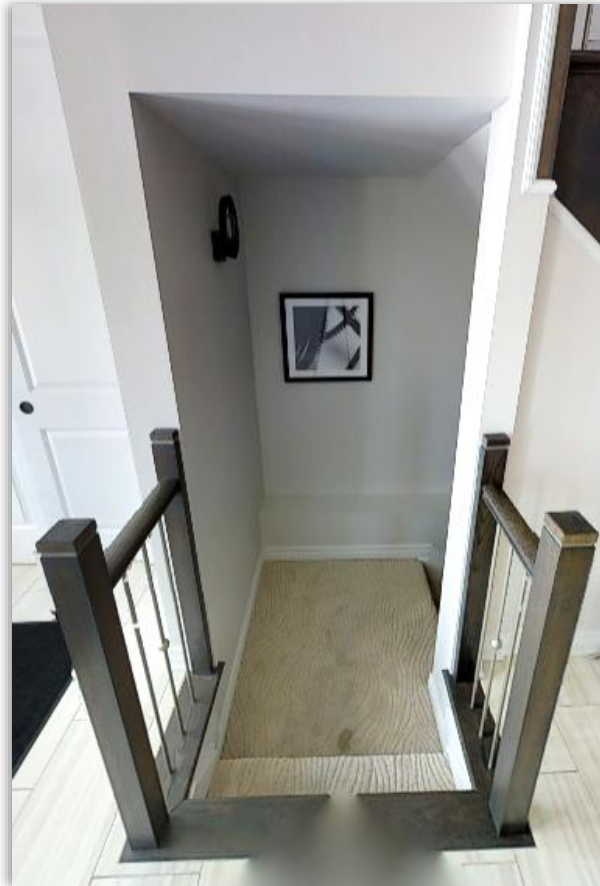
**OPTIONAL** – RAILING (WHERE APPLICABLE)



★ **INCLUDED** – DOOR ON BASEMENT STAIR LANDING  
(MODEL SPECIFIC)



**OPTIONAL** – BASEMENT LAYOUT A



**OPTIONAL** - BASEMENT LOBBY (MODEL SPECIFIC)  
**\*NOT AVAILABLE WITH FINISHED  
RECREATION ROOMS**





★ INCLUDED – FIREPLACE INSERT



FIREPLACE MODEL B36



OPTIONAL - FIREPLACE INSERTS



LINEAR FIREPLACE MODEL BL46



INCLUDED - BED



OPTIONAL - REMOTE  
(REMOTE MAY VARY)



OPTIONAL - BLOWER KIT





★ INCLUDED – OUT- BOX  
(MODEL SPECIFIC)



★ INCLUDED – IN-BOX  
(MODEL SPECIFIC)



OPTIONAL - IN/OUT BOX



OPTIONAL - STONE SURROUND



OPTIONAL - TILE SURROUND



---

## FRAMING OPTIONS





# MAHOGANY EXTERIOR DOOR HARDWARE

Torino with 30 mm plate  
(Satin Chrome - Included Selection)



Allegro with 30 mm plate



Roma with 55 mm plate\*



Venice with 30 mm plate



## Finishes Available

01



Satin Chrome

05



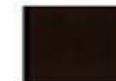
Oil Rubbed Bronze

11



Satin Nickel

25



Dark Bronze

28



Pewter

\*Roma not available in Satin Chrome or Oil Rubbed Bronze

- ★ **INCLUDED** – SMOOTH CEILING ON MAIN FLOOR
- ★ **INCLUDED MAHOGANY** – SMOOTH CEILING ON MAIN AND SECOND FLOOR



- ★ **INCLUDED** – STIPPLE CEILING INCLUDED ON 2<sup>ND</sup> FLOOR
- OPTIONAL** – SMOOTH CEILING



STANDARD FINISH ON OPTIONAL BASEMENT REC ROOMS AND BEDROOMS IS STIPPLE. SMOOTH CEILING IS OPTIONAL.

**OPTIONAL - DECORATIVE CEILING A (AVAILABLE IN SELECT ROOMS AS PER PLANS)**



**OPTIONAL - DECORATIVE CEILING B (AVAILABLE IN SELECT ROOMS AS PER PLANS)**



**OPTIONAL - DELETE DECORATIVE BULKHEAD**



**\*BULKHEADS CONCEALING BEAMS OR MECHANICAL ELEMENTS CANNOT BE DELETED**

★ **INCLUDED** – SIDE-BY-SIDE LAUNDRY ROUGH-IN



**OPTIONAL** - LAUNDRY VANITY



**OPTIONAL** - STACKED ROUGH-IN



★ **INCLUDED** – LAUNDRY TUB  
IN THE BASEMENT

**OPTIONAL** - ADDITIONAL  
LAUNDRY TUB (WHERE  
APPLICABLE)





**OPTIONAL - GAS BBQ ROUGH-IN**  
**OPTIONAL - EXTRA SHUT-OFF VALVE**



**OPTIONAL - GAS STOVE ROUGH-IN**



**OPTIONAL - GAS DRYER ROUGH-IN**



**\*ADDING ONE EXTRA GAS ROUGH-IN OPTION REQUIRES AN INCREASED GAS LINE\***

**OPTIONAL - SOUND INSULATION**  
(INTERIOR WALLS ONLY)



Insulation provided for additional noise reduction.  
Insulation type may vary

**OPTIONAL - GARAGE DOOR AND EXTERIOR WALL**  
INSULATION (BUNGALOW TOWNHOMES ONLY)



**OPTIONAL - GARAGE DOOR OPENER**  
LIFTMASTER 8355



SYSTEM INCLUDES 2 REMOTE  
CONTROLS



**OPTIONAL - KEYLESS ENTRY FOR GARAGE  
DOOR OPENER**



★ **INCLUDED** – COACH LIGHT  
(OR SIMILAR)



**OPTIONAL** - SOFFIT POT LIGHT



★ **INCLUDED** – HOSE BIB IN THE GARAGE AND  
REAR OF HOME

**OPTIONAL** - ADDITIONAL HOSE BIB



★ **INCLUDED** – ROUGH-IN

**OPTIONAL** – CENTRAL VAC COMPLETION IN MECHANICAL ROOM OR GARAGE  
(CENTRAL VAC UNIT SOLD SEPARATELY)



**OPTIONAL** – CENTRAL VAC UNIT AND ELECTRIC POWER  
HEAD KIT INCLUDES FLOOR WAND AND BRUSH, CREVICE  
TOOL, 30 FT HOSE, WASHABLE FILTER



**OPTIONAL** - UNDER CABINET VAC PAN



**OPTIONAL – ELECTRICAL OUTLET**  
**OPTIONAL – IN-WALL REINFORCEMENT**

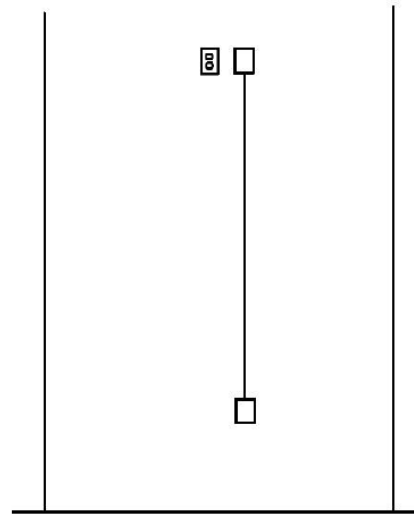
**OPTIONAL – WALL MOUNT TV PACKAGE INCLUDES:**

- IN-WALL REINFORCEMENT
- ELECTRICAL OUTLET
- 1 CONDUIT RUN



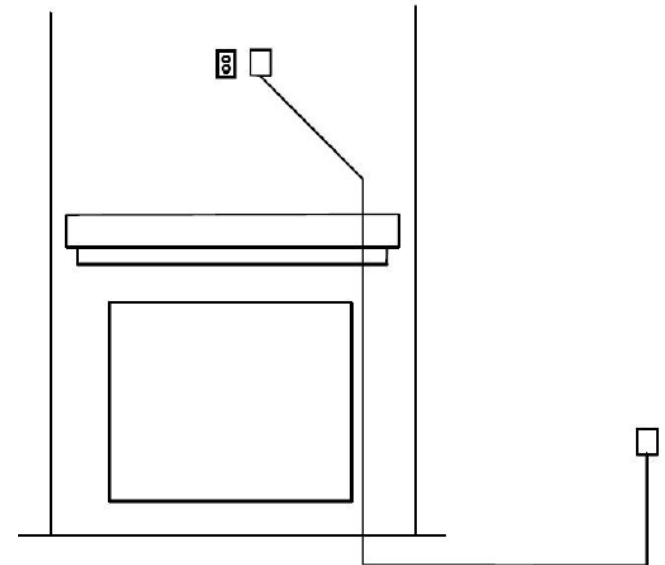
## PACKAGE A (INTERIOR WALLS ONLY)

CONDUIT RUN DIRECTLY BELOW TO PLUG



## PACKAGE C - OVER FIREPLACE

CONDUIT TO RUN FROM TV TO EXISTING CABLE LOCATION IN ROOM



NETWORK (B) AND CABLE (C) OUTLET LOCATIONS  
**OPTIONAL** – ADDITIONAL CABLE AND NETWORK OUTLETS



★ INCLUDED – PEDESTAL SINK



OPTIONAL - VANITY (MODEL SPECIFIC)  
(STONE COUNTER OFFERED SEPARATELY)





**OPTIONAL - DOUBLE SINKS**  
(WHERE APPLICABLE)



**OPTIONAL - FLOATING VANITY**  
(AVAILABLE ON INTERIOR WALLS ONLY)



**OPTIONAL - RECESSED MEDICINE CABINET**  
(AVAILABLE ON INTERIOR WALLS ONLY)



★ INCLUDED – MAAX AVENUE 30 X 21 (WHERE APPLICABLE)



OPTIONAL - MAAX EXHIBIT 30 X 20



OPTIONAL - MAAX RUBIX 30 X 18-3/4



**OPTIONAL – 4 FT SHOWER WITH BENCH**



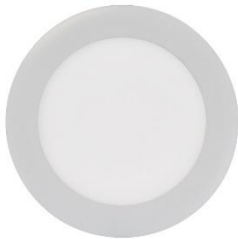
**OPTIONAL – 5 FT SHOWER**



★ **INCLUDED – ENSUITE SHOWER BASE**  
(MODEL SPECIFIC)



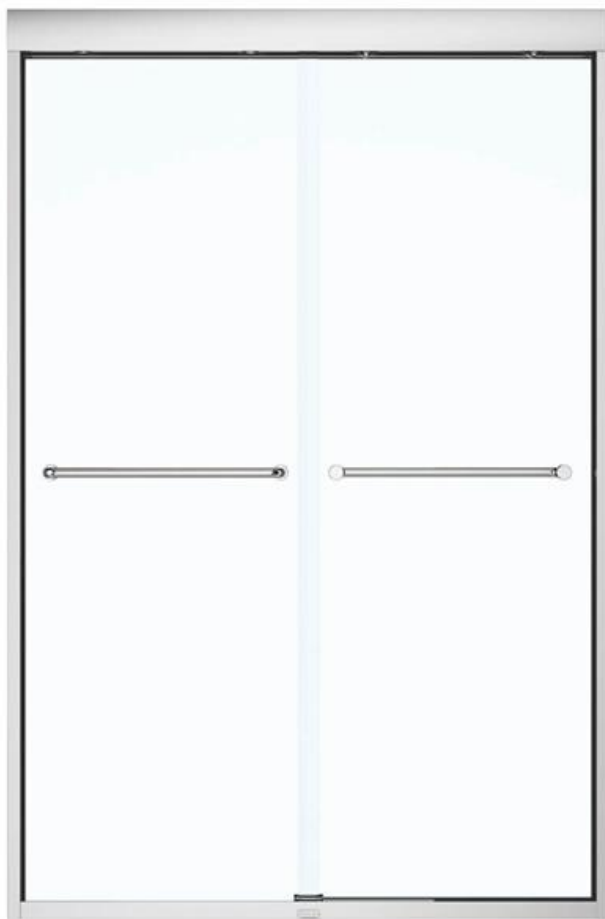
**OPTIONAL - CERAMIC TILE BASE**



★ **INCLUDED – SHOWER POT LIGHT**

**OPTIONAL – POT LIGHT OVER TUB/SHOWERS**

★ **INCLUDED** - SHOWER DOOR  
(MODEL SPECIFIC)

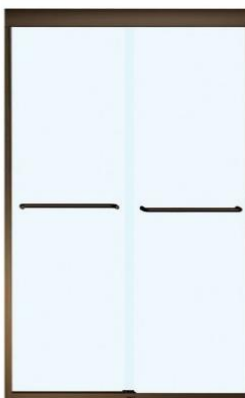


**OPTIONAL** - UPGRADE  
COLOURS

BRUSHED NICKEL



DARK BRONZE





OPTIONAL – HALO SHOWER DOOR

CHROME



DARK BRONZE



BRUSHED NICKEL



MATTE BLACK



**OPTIONAL** - SWINGING SEAMLESS DOOR  
(AVAILABLE IN CHROME, SATIN NICKEL, MATTE BLACK)

1 WALL



1 WALL + TUB WALL (WHERE APPLICABLE)



2 WALLS (WHERE APPLICABLE)



★ INCLUDED – FREESTANDING TUB  
(MODEL SPECIFIC)



MAAX JAZZ: WHITE

OPTIONAL - FREESTANDING TUB



MAAX OPTIK: WHITE



MAAX OPTIK: BLACK



MAAX OPTIK: THUNDER GREY

★ INCLUDED – ENSUITE SHOWER



★ INCLUDED – ROMAN TUB FILLER (MODEL SPECIFIC)



OPTIONAL – HAND SHOWER



★ INCLUDED – SECONDARY BATHROOMS



★ INCLUDED – SINK FAUCET





## VERO SERIES SHOWER / TUB FAUCETS



Chrome



Champagne  
Bronze



Stainless

**OPTIONAL – 17 SHOWER KIT**  
(WALK-IN SHOWER ONLY)



**OPTIONAL - SHOWER 17 SERIES**



**OPTIONAL - SHOWER MONITOR 14 SERIES**



**OPTIONAL - TUB FILLER (AVAILABLE WITH  
HAND SHOWER)**



## VERO SERIES SINK FAUCETS



**VERO**  
SINGLE HANDLE  
BATHROOM FAUCET  
**CHROME**  
MODEL#: 553LF

LEVEL 4



**VERO**  
SINGLE HANDLE  
BATHROOM FAUCET  
**CHAMPAGEN BRONZE**  
MODEL#: 553LF-CZ

LEVEL 6



**VERO**  
SINGLE HANDLE  
BATHROOM FAUCET  
**STAINLESS**  
MODEL#: 553LF-SS

LEVEL 6



**VERO**  
TWO HANDLE WIDE SPREAD  
BATHROOM FAUCET  
**CHROME**  
MODEL#: 3 553LF

LEVEL 5



**VERO**  
TWO HANDLE WIDE SPREAD  
BATHROOM FAUCET  
**CHAMPAGEN BRONZE**  
MODEL#: 3553LF-CZ

LEVEL 9



**VERO**  
TWO HANDLE WIDE SPREAD  
BATHROOM FAUCET  
**STAINLESS**  
MODEL#: 3 553LF-SS

LEVEL 8

## ARA SERIES SHOWER / TUB FAUCETS



Chrome



Matte Black



Stainless

### OPTIONAL - SHOWER



### OPTIONAL - TUB FILLER (AVAILABLE WITH HAND SHOWER)



## ARA SERIES SINK FAUCETS



**ARA**  
SINGLE HANDLE BATHROOM FAUCET  
**MATTE BLACK**  
MODEL#: 567LF-BLMPU

LEVEL 5



**ARA**  
SINGLE HANDLE BATHROOM FAUCET  
**CHROME**  
MODEL#: 567LF-MPU

LEVEL 3



**ARA**  
SINGLE HANDLE BATHROOM FAUCET  
**STAINLESS**  
MODEL#: 567LF-SSMPU

LEVEL 5



**ARA**  
TWO HANDLE WIDESPREAD BATHROOM  
FAUCET  
**MATTE BLACK**  
MODEL#: 3567-BLMPU-DST

LEVEL 7



**ARA**  
TWO HANDLE WIDESPREAD BATHROOM  
FAUCET  
**CHROME**  
MODEL#: 3567-MPU-DST

LEVEL 4



**ARA**  
TWO HANDLE WIDESPREAD BATHROOM  
FAUCET  
**STAINLESS**  
MODEL#: 3567-SSMPU-DST

LEVEL 7



## TRINSIC / TOMMY SERIES SHOWER + TUB FAUCETS



Chrome



Matte Black



Stainless

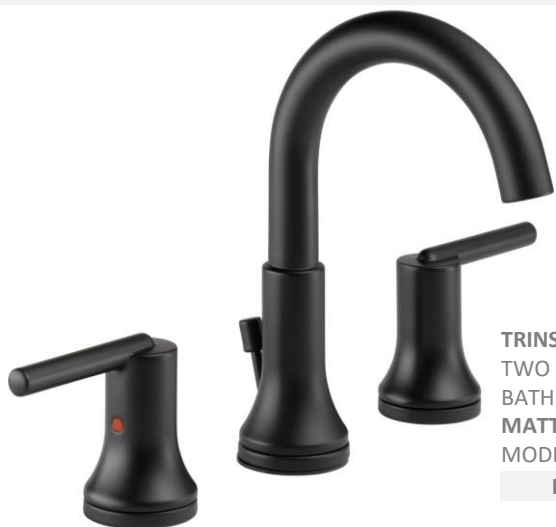
### OPTIONAL - SHOWER



### OPTIONAL - TUB FILLER (AVAILABLE WITH HAND SHOWER)



## TRINSIC / TOMMY SERIES SINK FAUCETS



**TRINSIC**  
TWO HANDLE WIDE SPREAD  
BATHROOM FAUCET  
**MATTE BLACK**  
MODEL#: 3559-BLMPU-DST  
**LEVEL 7**



**TRINSIC**  
TWO HANDLE WIDE SPREAD  
BATHROOM FAUCET  
**CHROME**  
MODEL#: 3559-MPU-DST  
**LEVEL 4**



**TOMMY**  
SINGLE HANDLE  
BATHROOM FAUCET  
**CHROME**  
MODEL#: 691LF  
**LEVEL 2**



**TOMMY**  
SINGLE HANDLE  
BATHROOM FAUCET  
**MATTE BLACK**  
MODEL#: 691LF-BL  
**LEVEL 3**

★ INCLUDED – NO KITCHEN BULKHEAD UPPER CABINET SPACING



★ INCLUDED – KITCHEN BULKHEAD UPPER CABINET SPACING



**OPTIONAL - 36" STOVE OPENING**  
(INCLUDES 36" STAINLESS STEEL UNDER CABINET HOOD FAN)



**OPTIONAL - 36" HOOD FAN**

SCB50036



SCB501



SCB51436



★ INCLUDED – UNDER CABINET HOOD FAN



SR30482



PP30382



AVAILABLE COLOURS



GRIS  
GREY



BLANC  
WHITE

ARCBALENO



NOIR  
BLACK



**OPTIONAL - WALL OVEN**  
(KITCHEN MUST HAVE 24" DEEP PANTRY TO ACCOMMODATE)



**OPTIONAL - COOKTOP**



**\*SPECIFICATIONS REQUIRED\***

**\*APPLIANCES AND INSTALLATION NOT INCLUDED\***

**OPTIONAL – MICROWAVE HOOD FAN ROUGH-IN**



★ **INCLUDED – MICROWAVE SHELF**  
**OPTIONAL – RELOCATION**



**OPTIONAL - LOWER MICROWAVE PANEL**  
(PANEL ACCOMMODATES BUILT-IN)



**\*SPECIFICATIONS REQUIRED\***  
**\*APPLIANCES AND INSTALLATION NOT INCLUDED\***

**OPTIONAL - FRIDGE WATERLINE  
INCLUDED - MAHOGANY**



**OPTIONAL - WINE FRIDGE**



**\*SPECIFICATIONS REQUIRED\***  
**\*APPLIANCES AND INSTALLATION NOT INCLUDED\***

**OPTIONAL - INTERIOR CABINET LIGHTING**



**OPTIONAL - UNDER CABINET LIGHTING**



**OPTIONAL - ISLAND CAPPED OUTLETS FOR FUTURE PENDANTS**



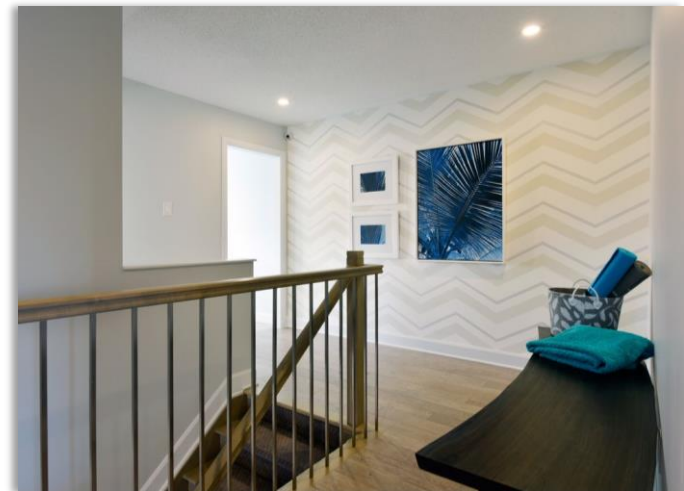
**OPTIONAL - CEILING FAN ROUGH-IN**



**OPTIONAL - POT LIGHTS**



**OPTIONAL - POT LIGHTS IN LIEU OF INCLUDED FIXTURE**





## SWITCHED OUTLET FOR LAMP

- LIVING ROOMS, GREAT ROOMS, FAMILY ROOMS



## HALLS, KITCHEN, FINISHED BASEMENTS



## BASEMENT STAIRS



## BREAKFAST



## DINING AND STAIRS



## BATHROOM





