



DESIGN CENTRE FRAMING OPTIONS CATALOGUE

AVENUE, EXECUTIVE AND URBAN TOWNHOMES



The Minto Design Centre Framing Catalogue features the options and selections available to you as part of the framing portion of your Design Centre experience.

Ahead of your appointment, we encourage you to review the options outlined in this catalogue, as well as our [Design Inspirations](#) page to collect ideas to help with your selection process. Below, we have provided links to our model home virtual tours to further inspire you.

During your framing appointment, your Design Centre Consultant will review this document in detail with you to answer any questions you may have, and to work with you to select the ideal framing options for your new Minto home.



Quinton Model Home Kitchen



Dahlia Ensuite Bath



Clairmont Model Home Kitchen

INCLUDED – Smooth ceiling on main floor



INCLUDED Stipple ceiling included on 2nd floor and finished basement
Optional – Smooth ceiling



Optional - Sound insulation
(Interior walls only)



Optional - garage door and exterior
wall insulation



Optional - Garage door opener
Liftmaster 8355



Optional - Keyless entry for
garage door opener



Optional - 220V for
future electric car



INCLUDED – side-by-side laundry rough-in



INCLUDED – Laundry tub in the basement

AVENUE TOWNS
Optional - Laundry tub
(where applicable)



Optional - Gas BBQ rough-in



Not available for Avenue or Urban Townhomes

Optional - Gas stove rough-in
Optional – Extra shut-off valve in mechanical



Optional - Gas dryer rough-in



*Adding **two** or more gas rough-in options require an increased gas line*

Optional - Hardwood stair (carpet runner not included)

Not available for Avenue or Urban Townhomes

INCLUDED – Carpet stairs



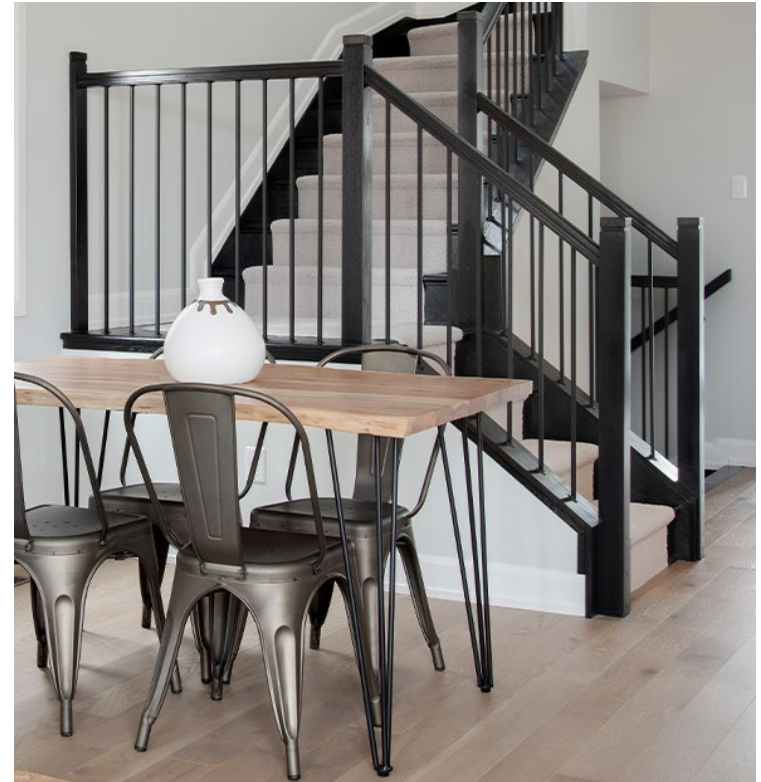
Optional - Entry or mudroom steps to hardwood
(where applicable)



INCLUDED – low-wall
(model specific)



Optional - railing
(where applicable)



(not available for Avenue townhomes)

INCLUDED – rough-in

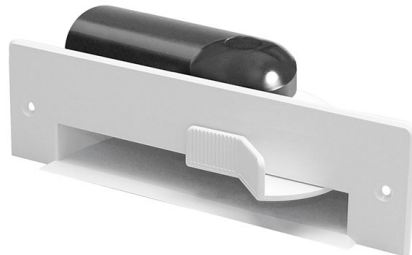
Optional - Completion in mechanical room or garage



Optional - Machine and electric power head kit includes floor wand and brush, crevice tool, 30 ft. hose, washable filter



Optional - Under cabinet vac pan



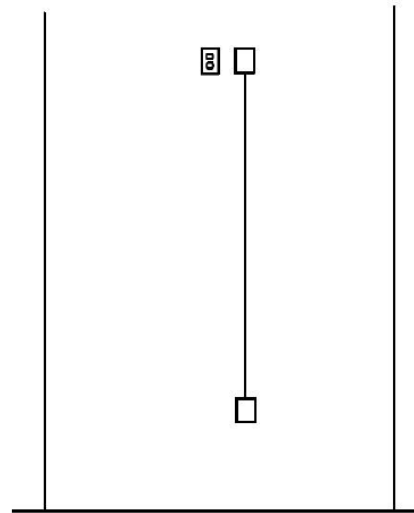
Optional – Electrical outlet
Optional – In-wall reinforcement



Optional – Wall mount TV Package Includes:
In-wall reinforcement
electrical outlet
1 conduit run

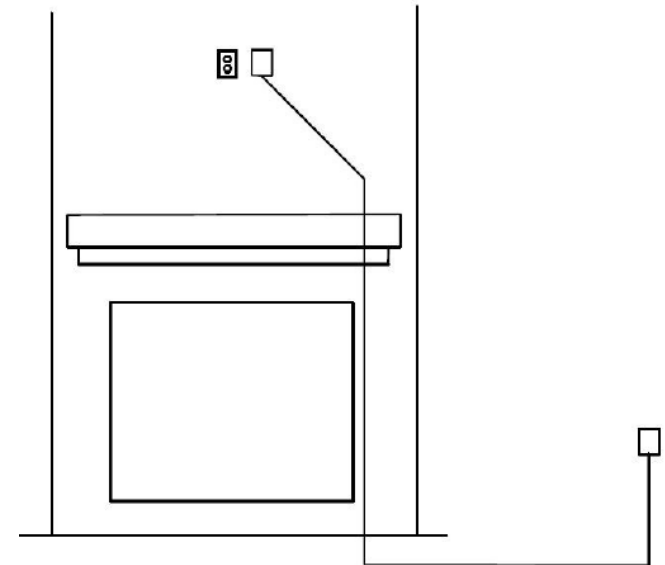
Package A

conduit run directly below to plug



Package C - Over fireplace

Conduit run to finished basement up to cable location in room



Network (B) and Cable (C) outlet locations – 3 included locations
Optional – Additional cable and network outlets



Optional – Fireplace

Not available for Avenue or Urban Townhomes



B36



Optional - Fireplace inserts



BL36



Included bed



BL46



As shown in model (image left)

Optional remote



Optional blower kit





INCLUDED— Out- box
(model specific)



INCLUDED— In-box
(model specific)



Optional - In/out box
(where applicable)



Optional - Stone surround



Optional - Tile surround

INCLUDED— pedestal sink



Optional - Vanity (model specific)
(Stone counter and undermount sink not included)



Optional - Double sinks
(where applicable)



Optional - Floating vanity with recessed kick plate
(not available on exterior walls)



Optional - Recessed medicine cabinet
(interior walls only)



INCLUDED—Maax Avenue 30 x 21 (where applicable)



Optional - Maax Exhibit 30 x 20



Optional - Maax Rubix 30 x 18-3/4



Optional – 4 foot shower with bench



Optional – 5 foot shower



INCLUDED with shower upgrade - ensuite shower base



Optional - Ceramic tile base



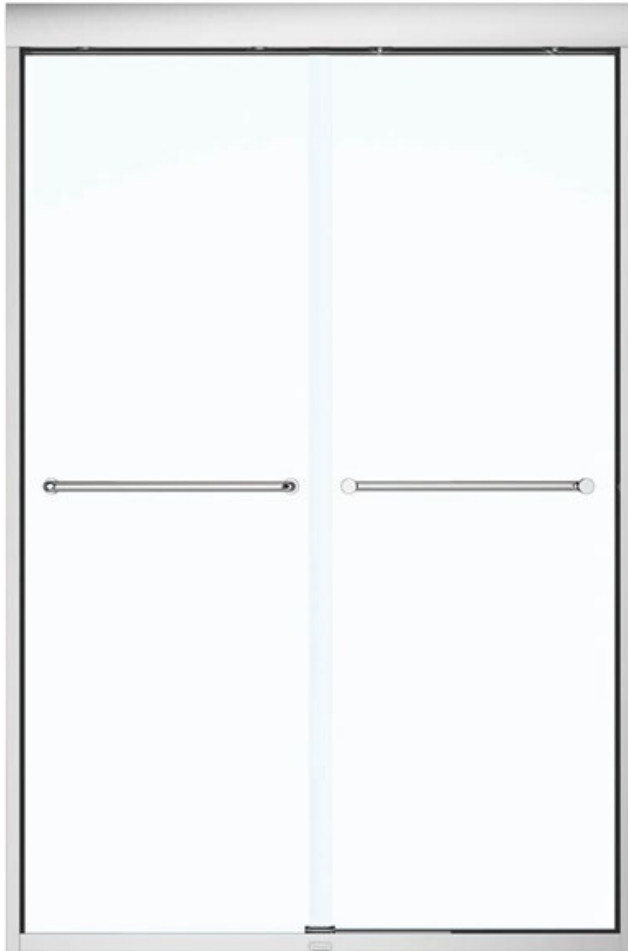
INCLUDED with
shower upgrade –
shower light
(Model specific)



INCLUDED with shower
upgrade – Shower pot
light

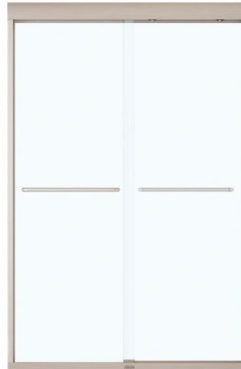
Optional – pot light over
tub/showers

INCLUDED - shower door
(model specific)

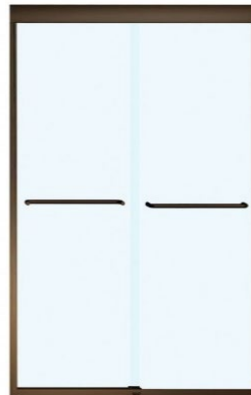


Optional - Upgrade
colours

Brushed Nickel



Dark Bronze



Optional – Halo shower door

Chrome



Dark Bronze



Brushed Nickel



Matte Black



Optional swinging seamless door
(Available in chrome, satin nickel, matte black, and brite gold)



INCLUDED – ensuite
shower



INCLUDED – roman tub filler
(model specific)



Optional – Hand shower



INCLUDED – secondary
bathrooms



INCLUDED – sink faucet



Vero Series



Optional – 17 Series System
(walk-in shower only)



Optional - Shower 17 Series



Optional Shower Monitor 14 Series



Optional sink faucets



Optional - Tub filler (available with hand shower)



Pivotal Series



Chrome



Matte Black



Stainless

Optional – Shower System
(walk-in shower only)



Matte Black

Optional - Shower



Optional - Sink faucets



Optional - Tub filler (available with hand shower)



Ara Series



Optional - Shower



Optional - Sink faucets



Optional - Tub filler (available with hand shower)



Tommy/Trinsic Series



Optional - Shower



Optional - Sink faucets



Optional - Tub filler (available with hand shower)



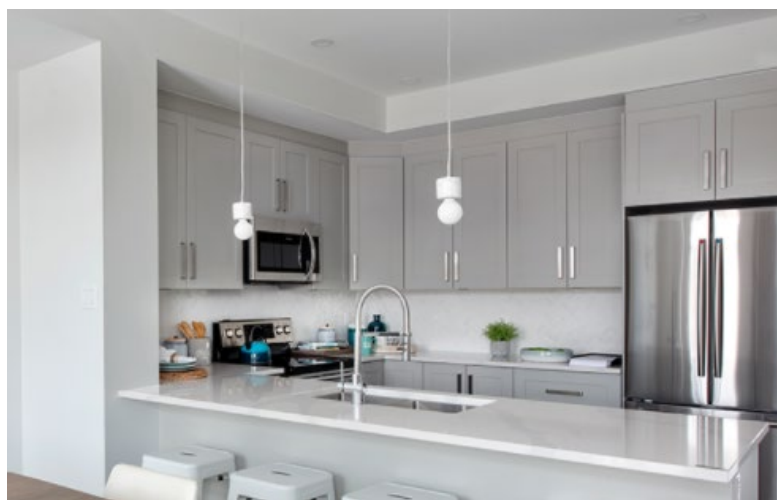
INCLUDED— Upper cabinet spacing



INCLUDED— Kitchen bulkhead upper cabinet spacing



Optional - 39" upper cabinets with filler



INCLUDED – over-the-range microwave



Optional – Relocation to upper or lower cabinet



Optional - Lower microwave panel (panel accommodates built-in)



Specifications required

Appliances and installation not included

Optional Undercabinet hood fan



Optional Chimney hood fan
SR30482



Optional Chimney hood fan
PP30382



Available colours

Optional Chimney hood fan
ARCBALENO



NOIR
BLACK

GRIS
GREY



BLANC
WHITE



Optional fridge waterline



Optional wine fridge



Specifications required
Appliances and installation not included

Optional – Interior cabinet lighting



Optional under cabinet lighting



Optional island capped outlets for future pendants



Optional ceiling fan rough-in



Optional pot lights



Optional pot lights in lieu of included fixture



Switched outlet for lamp
living rooms, great rooms, family rooms



Halls, kitchen, finished basements



Basement stairs



Breakfast



Dining and Stairs



Bathroom



