



The 2020 Minto Dream Home for CHEO

For 65 years, Minto's guiding principle has been to put homeowners first, ensuring they have the best quality of life possible. And despite this year's challenges, we continue to live our promise. The need to adapt and find comfort in our homes has never been more important. That's why we designed this year's Minto Dream Home for CHEO to be the ultimate stay-at-home retreat.

The Bohemian marks our 20th year partnering with the CHEO Foundation for its Dream of a Lifetime Lottery grand prize. Having helped raise more than \$5 million last year, our goal is to again sell out of tickets and support CHEO when they need us most.

Many fundraising events have been canceled this year, so we're committed to helping a hospital that's positively impacted so many of our lives.

As well, we're excited to announce that we're returning to Mahogany, Manotick, for this year's Minto Dream Home. A master-planned community, Mahogany offers modern, established living paired with warm village charm – the perfect community for the Bohemian.

Visit MintoDreamHome.com to learn more.



The Bohemian

4,700 sq. ft.



Design

A whopping 4,700 sq. ft., the Bohemian is a 4-bedroom, 4.5-bathroom Single Family Home sitting on an oversized corner lot overlooking the beautifully landscaped Mahogany Pond. With stunning exterior stone, a wraparound porch supported by oversized square columns, and spectacular gables on three sides, the Bohemian authentically embodies Manotick's quintessential charm.

Inside, no detail has been overlooked. Our collaboration with Tanya Collins Design delivers organic yet sophisticated boho-chic style. Wood-clad beams, quirky wallpaper and colours, textural tiles, black window frames – every feature is shaped by an eclectic style that encourages you to fill your home with the things that bring you joy.

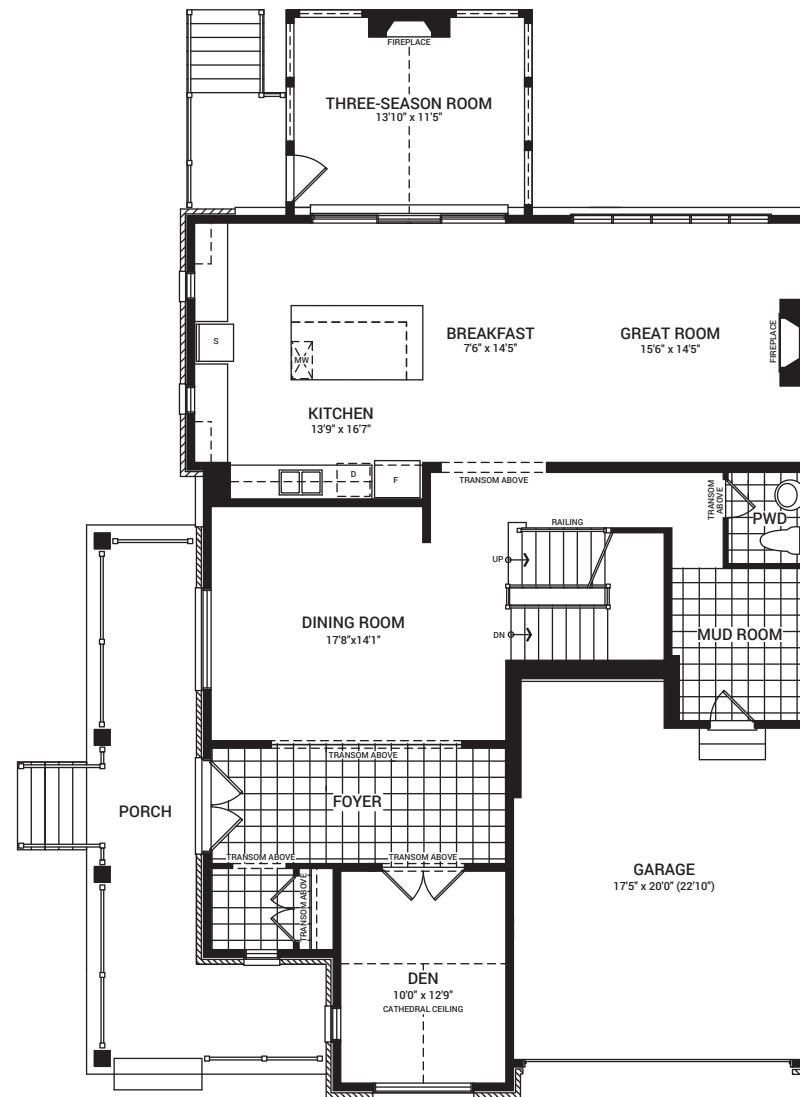
This year's home also includes a gorgeous third-floor loft with a covered balcony and cathedral-style ceilings, a three-season room with a built-in fireplace, as well as a fully equipped gym with a privacy wall in the basement. It's maximalism over minimalism – an exquisite place to live, work and play.

The CHEO Dream of a Lifetime Lottery runs from September 7 to December 4.

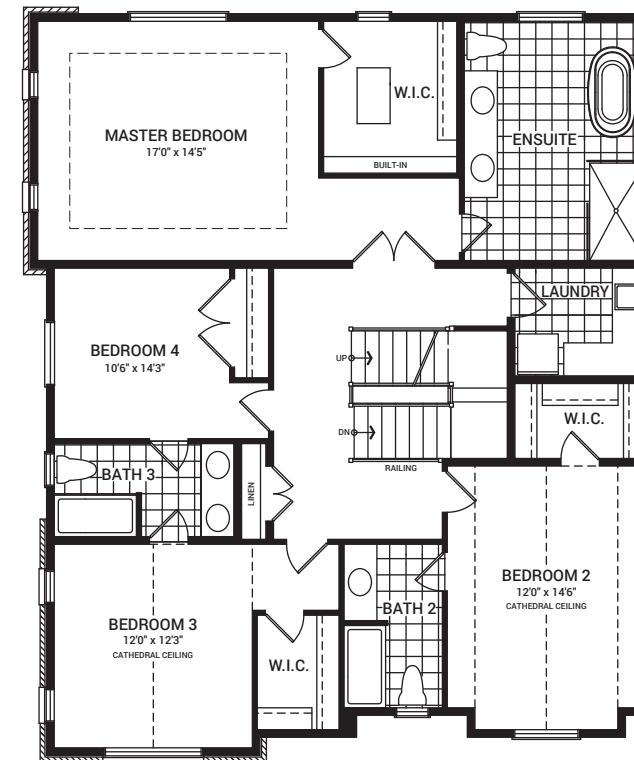
Visit MintoDreamHome.com to learn more.

The Bohemian
571 Bridgeport Avenue
Mahogany, Manotick

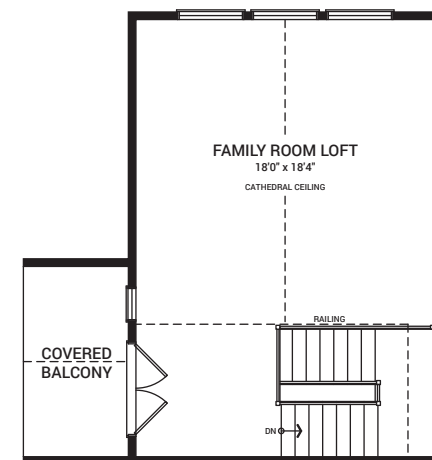
Main floor



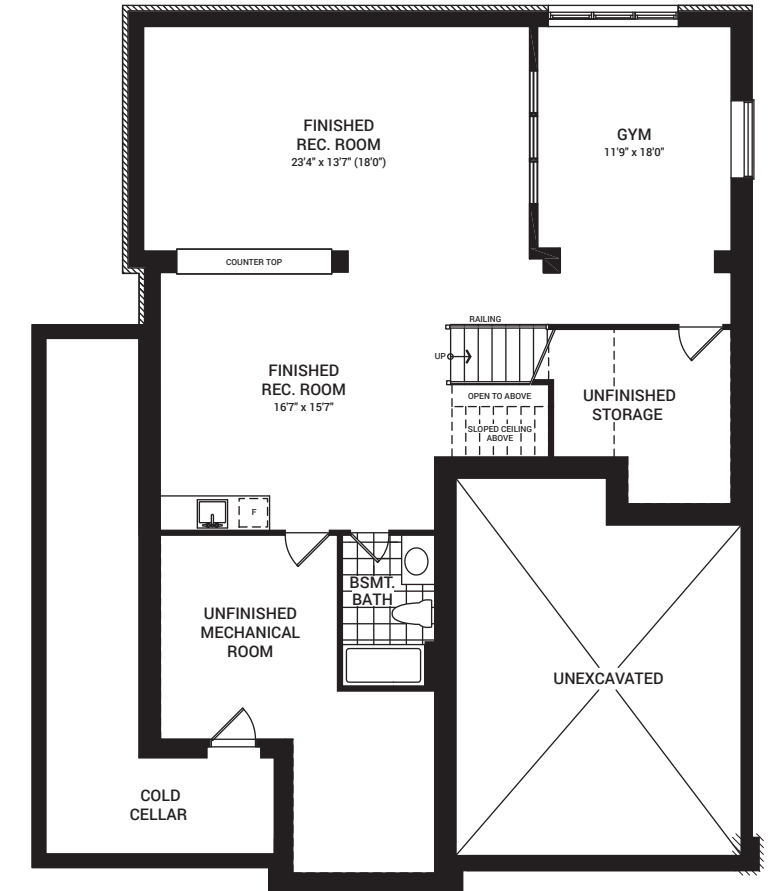
Second floor



Third floor (Loft)



Basement floor



All plans, dimensions and specifications are subject to change without notice. Actual usable floor space may vary from the stated floor area. Column locations, window locations and sizes may vary and are subject to change without notice. Renderings are artist's concept only. E.&O.E. August 2020



Minto Model Homes and Sales Centres

Tour a Minto Model Home at one of our many communities across the city.



GATINEAU

174

ORLÉANS

AVALON

ORLÉANS

2370 TENTH LINE ROAD

MODEL
HOMES
AVAILABLE

MODEL
HOMES
AVAILABLE

ARCADIA
KANATA

**MORGAN'S
CREEK**
KANATA

380 HUNTMAR DRIVE

KANATA

417


QUINN'S POINTE
BARRHAVEN


HARMONY
BARRHAVEN

4005 STRANDHERD DRIVE

BARRHAVEN

MODEL
HOMES
AVAILABLE

MANOTICK


MAHOGANY
MANOTICK

108 MORETTO COURT

MODEL
HOMES
AVAILABLE

Model Homes are by appointment only and close 30 minutes prior to the Sales Centre.



Tour our Model Homes
online from the comfort
of your home.

ottawahomes.minto.com

416