



AVALON

30'
Single Family Homes



Welcome to Avalon —
the heart of Orléans.

Come home to a neighbourhood over
20 years in the making that has brought
over 5,000 families closer together.



It's all within reach

From transit to shopping, entertainment and recreation, schools and parks — both within and surrounding the neighbourhood — Avalon homeowners enjoy easy access to everything Orléans has to offer.



Live well

Intertwined with walking and running paths, water features, parks and green spaces, design an active, healthy lifestyle in Avalon. It's here to be enjoyed.



Relax in an environment
carefully designed with your
well-being in mind



Live comfortably thanks to
the latest in construction
technologies



Build lasting community
connections with
neighbours



Breathe easier
with the latest
fresh air systems



Nurture a healthy, active
lifestyle with parks and
green spaces



Embrace personal
comfort with Smarter
Home technology



Feel energized in
brightly lit open-concept
living spaces



Pond in Avalon Vista



A sanctuary in the heart of Orléans

Indulge in quiet moments with nature in Avalon Vista. Surrounded by green space, with a community pond at its centre, Avalon Vista is a serene enclave of beautifully crafted contemporary homes.



explore

inspire

Connected to the established Avalon neighbourhood and backed by nature, live close to parks, pathways, and everyday amenities — plus easy access to a number of great Orléans schools. Avalon Vista has everything families need to grow and thrive.





From frame to finishes — have it all

A thoughtfully designed home is just the beginning of life in an Avalon community. Choose from our full collection of bright and dynamic floorplans, superbly crafted with open, connected space for joyful gatherings and carefully considered exteriors for beautiful curb appeal.

Larger windows
for brighter rooms

Convenient,
contemporary living

Designed with your
well-being in mind



Designed for life

Select inspiring finishes and striking fixtures with the help of our experts at the Design Centre.

Smarter Homes

Track and control the comfort and performance of your home from a single intuitive mobile app wherever you are, whenever you want.





30' Collection

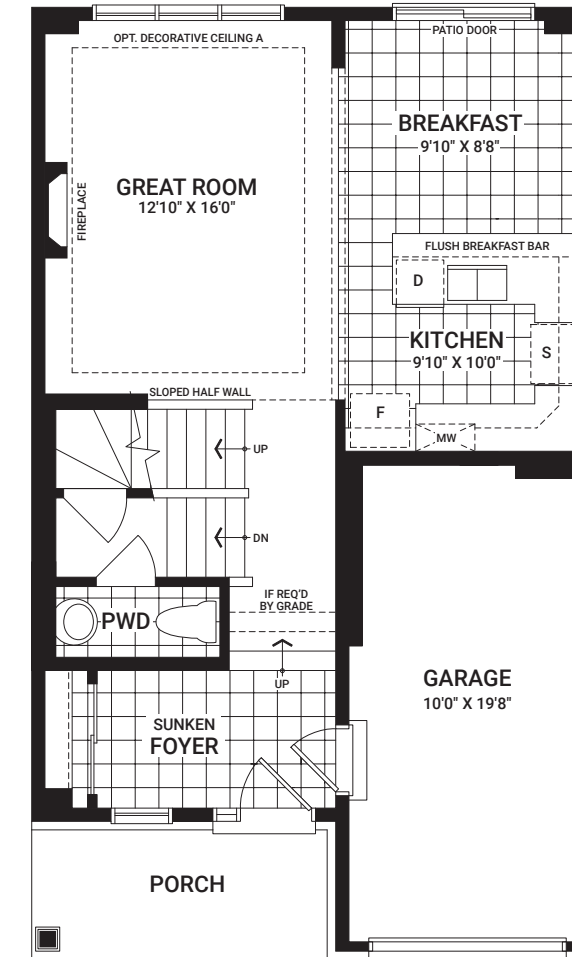
Single Family Homes on 30' wide lots have been superbly designed to maximize space and style with open, connected layouts to suit today's homeowner.

AVALON

1,436 sq. ft.



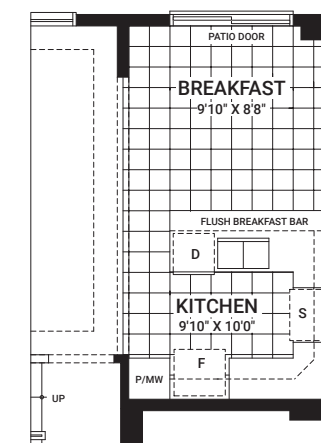
MAIN FLOOR



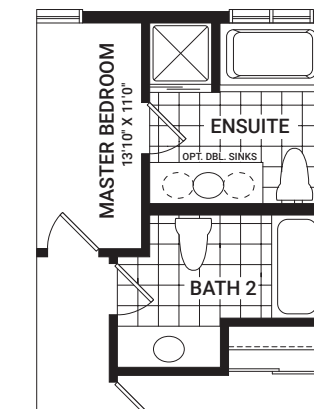
The floor plan for the second floor includes the following rooms and features:

- MASTER BEDROOM:** 14'0" X 11'0". Features an optional decorative ceiling and a large closet area.
- W.I.C. (Walk-In Closet):** Located adjacent to the Master Bedroom.
- ENSUITE:** Attached to the Master Bedroom, featuring optional double sinks and optional double shelves.
- BATH 2:** The central bathroom, featuring optional double sinks and a linen closet.
- BEDROOM 2:** 10'0" X 11'4". Located on the right side of the floor plan.
- BEDROOM 3:** 10'0" X 9'4". Located at the bottom left of the floor plan.
- Staircase:** Centrally located, with a "DN" (down) arrow indicating the direction.
- Half Wall:** Located near the staircase.

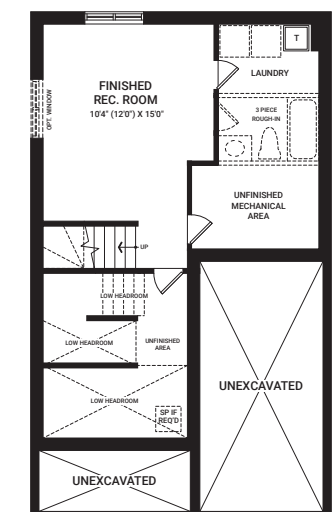
OPTIONAL KITCHEN LAYOUT A



OPTIONAL ENSUITE LAYOUT A



OPTIONAL FINISHED BASEMENT
REC. ROOM



*Ask our Sales Agents about other options for this home.

Hyde

1,690 sq. ft.



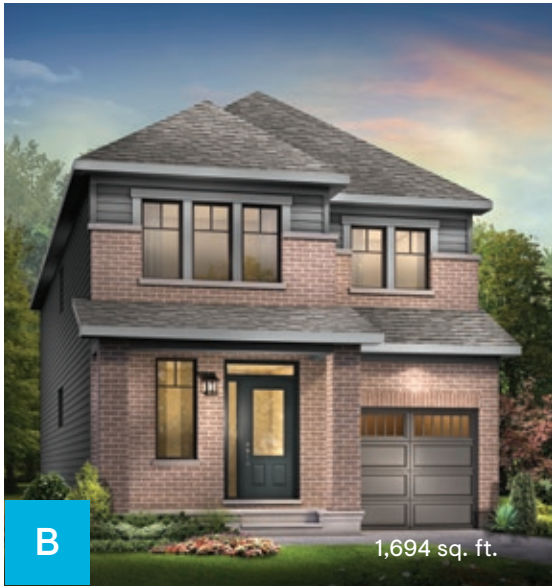
C

1,690 sq. ft.



A

1,690 sq. ft.



B

1,694 sq. ft.

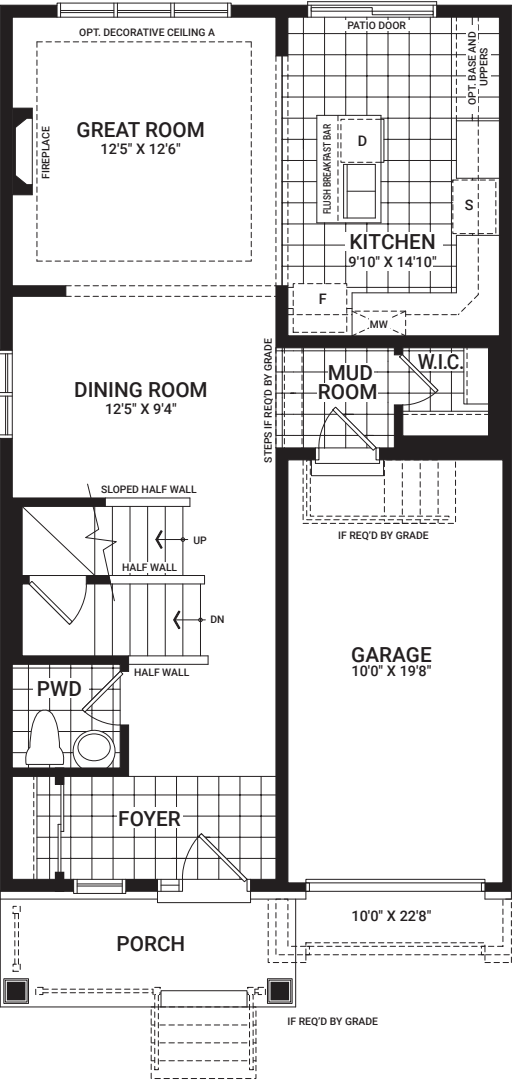


D

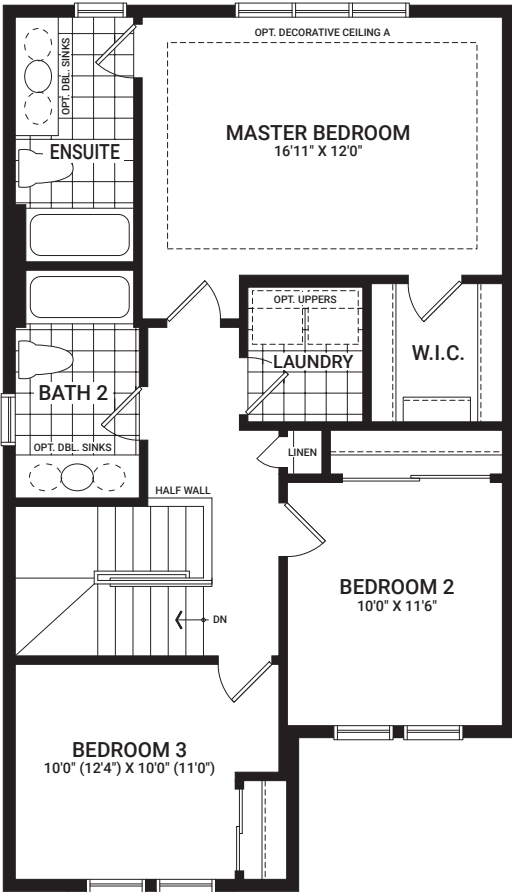
1,691 sq. ft.

Floorplan – Elevation A

MAIN FLOOR

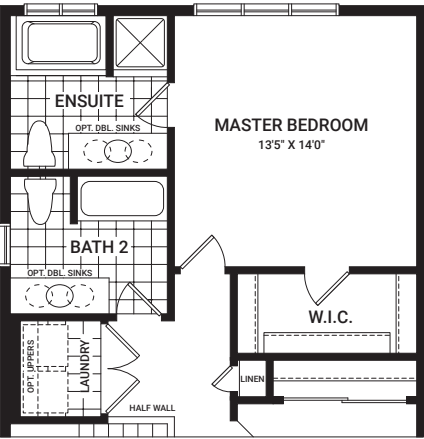


SECOND FLOOR

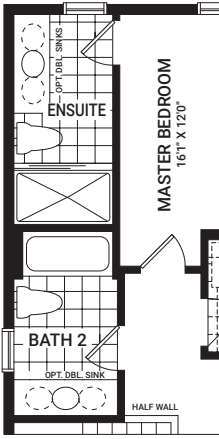


Flex Plans

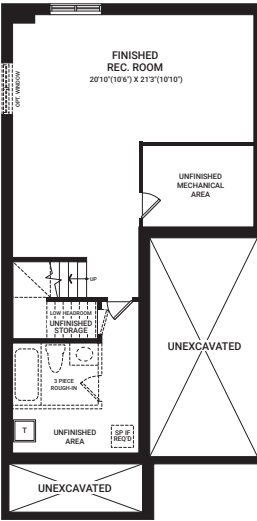
OPTIONAL SECOND FLOOR LAYOUT A



OPTIONAL ENSUITE WITH 5' SHOWER IN LIEU OF TUB



OPTIONAL FINISHED BASEMENT REC. ROOM



All plans, dimensions, and specifications are subject to change without notice. Actual usable floor space may vary from the stated floor area. Column locations, window locations, and sizes may vary and are subject to change without notice. Renderings are artist's concept only. E.&O.E. July, 2020

*Ask our Sales Agents about other options for this home.

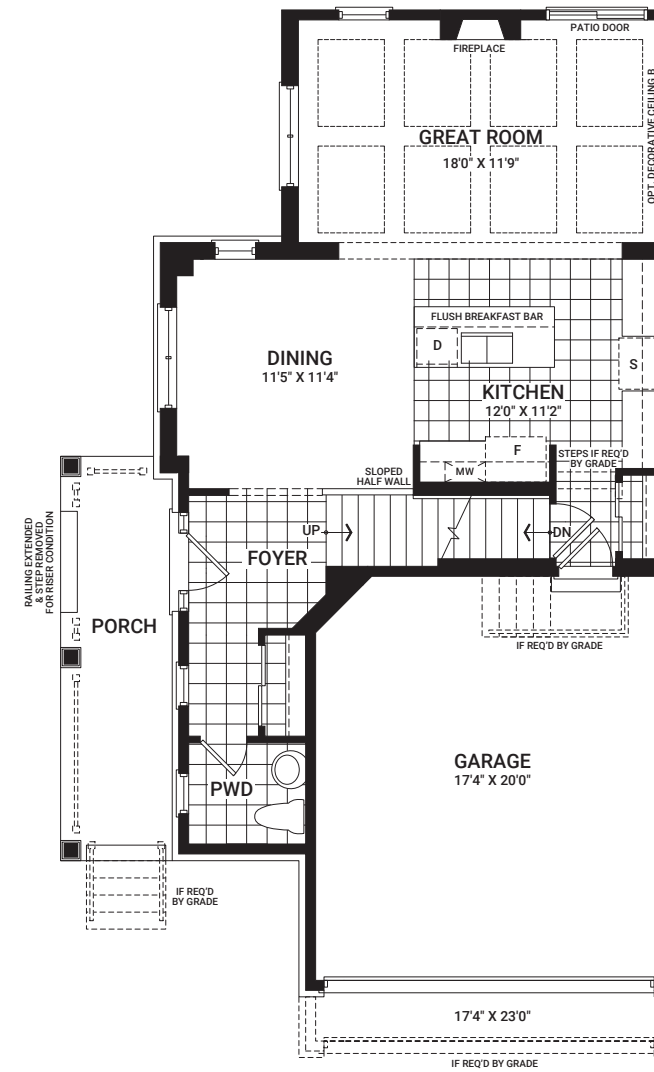
Jefferson

1,751 sq. ft.

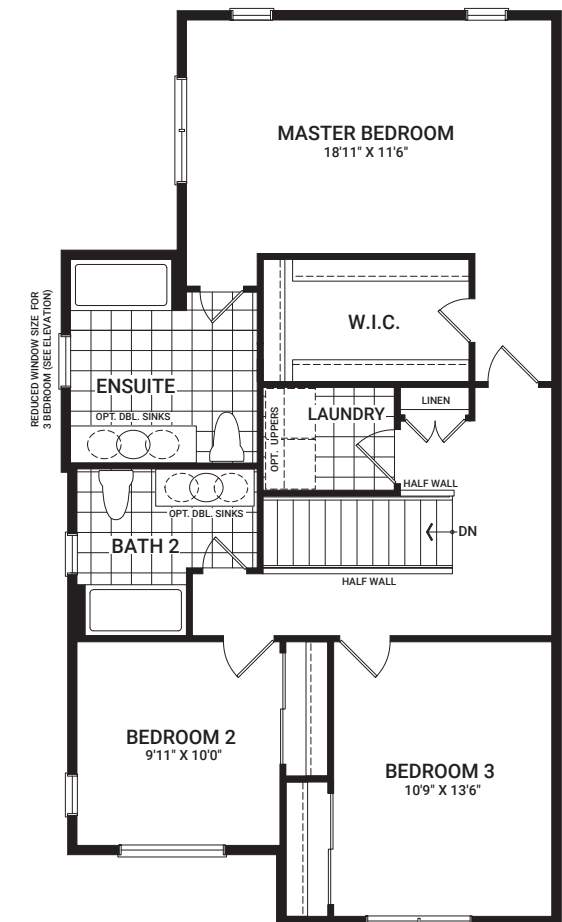


Floorplan – Elevation A

MAIN FLOOR

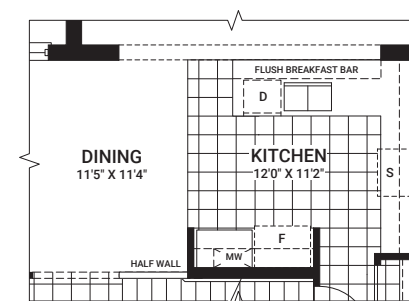


SECOND FLOOR



Flex Plans

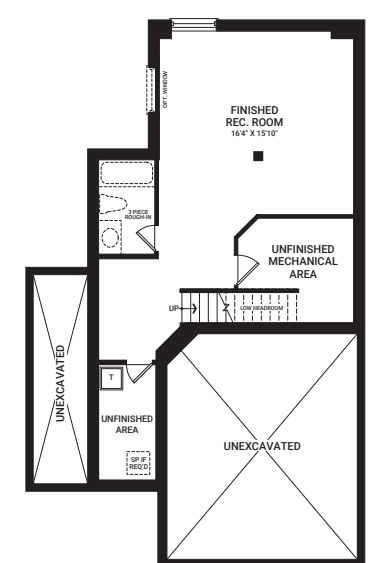
OPTIONAL KITCHEN LAYOUT A



OPTIONAL 4 BEDROOM LAYOUT A



OPTIONAL FINISHED BASEMENT
REC. ROOM



1,751 sq. ft.

All plans, dimensions, and specifications are subject to change without notice. Actual usable floor space may vary from the stated floor area. Column locations, window locations, and sizes may vary and are subject to change without notice. Renderings are artist's concept only. E.&O.E. July, 2020

*Ask our Sales Agents about other options for this home.

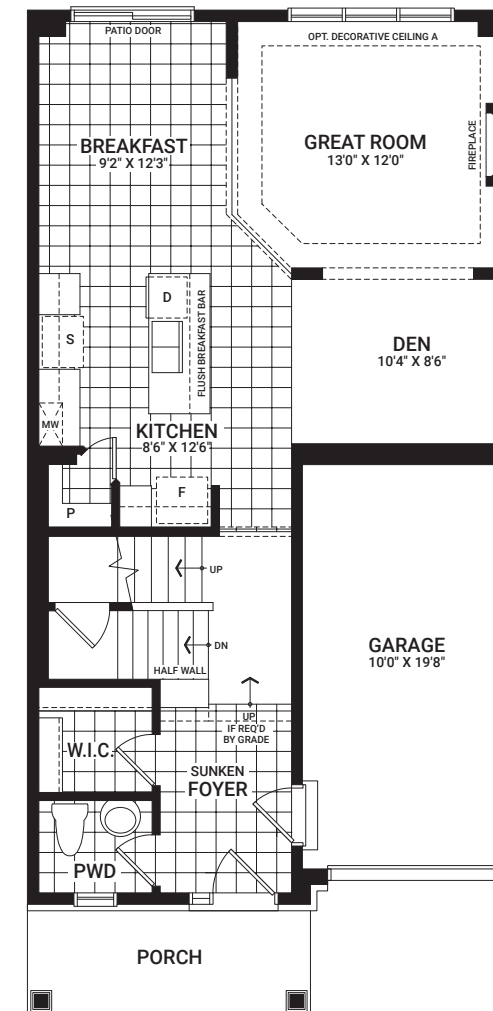
Kinghurst

1,781 sq. ft.

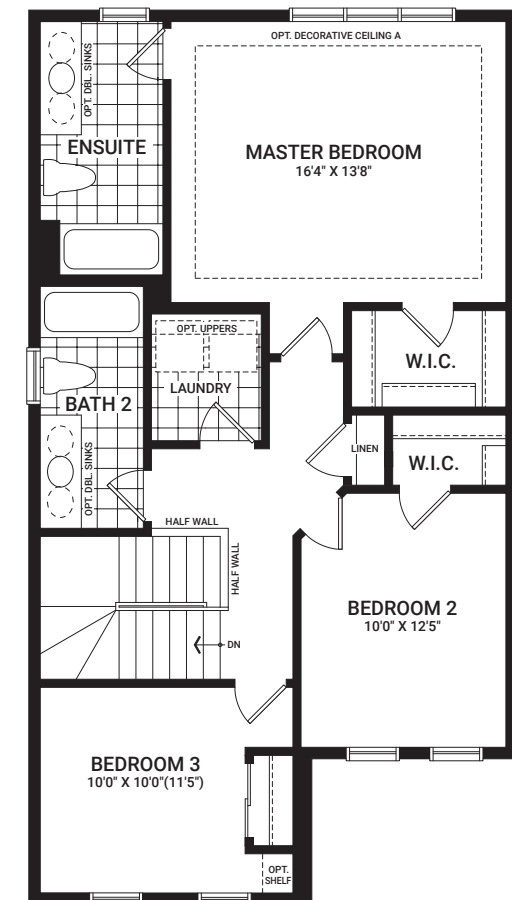


Floorplan – Elevation A

MAIN FLOOR

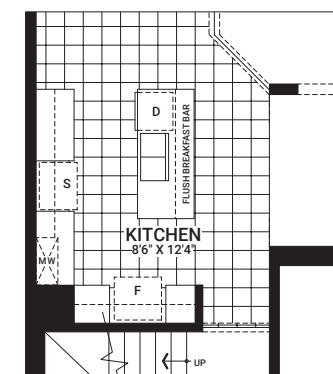


SECOND FLOOR

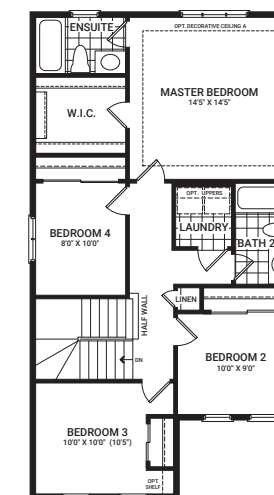


Flex Plans

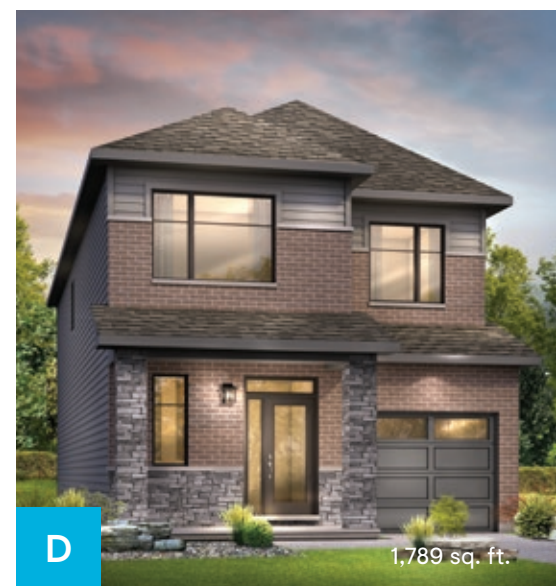
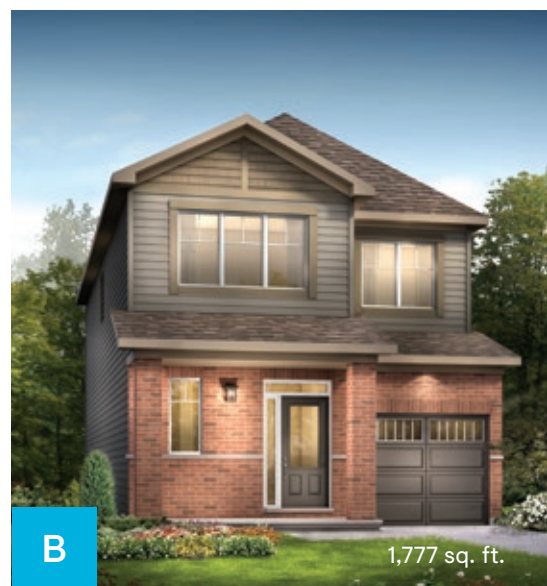
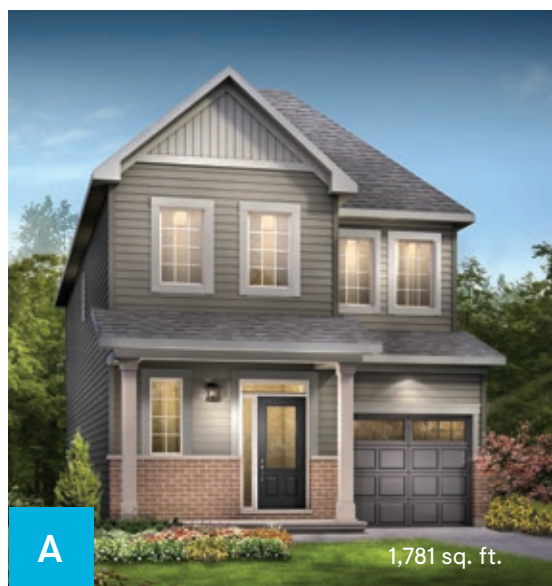
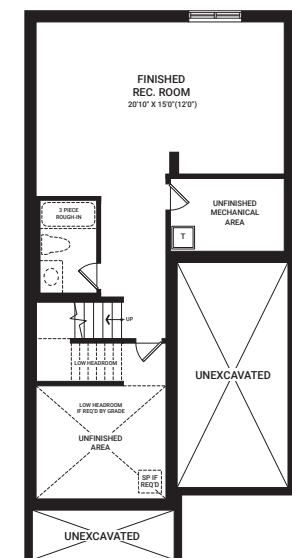
OPTIONAL KITCHEN LAYOUT A



**OPTIONAL 4 BEDROOM
SECOND FLOOR**



OPTIONAL FINISHED BASEMENT
REC. ROOM



All plans, dimensions, and specifications are subject to change without notice. Actual usable floor space may vary from the stated floor area. Column locations, window locations, and sizes may vary and are subject to change without notice. Renderings are artist's concept only. E.&O.E. July, 2020

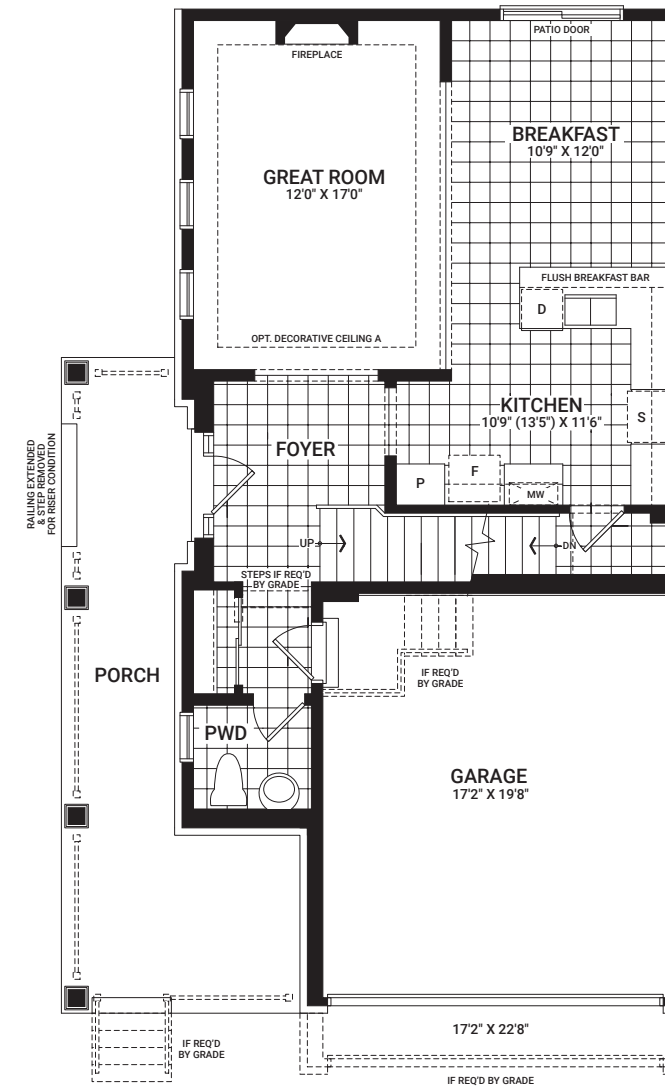
*Ask our Sales Agents about other options for this home.

1,820 sq. ft.

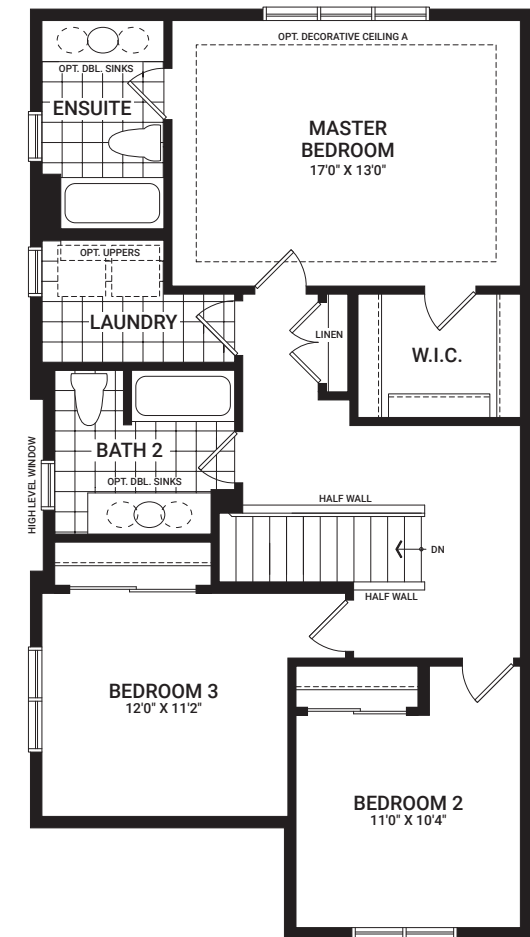


Floorplan – Elevation A

MAIN FLOOR

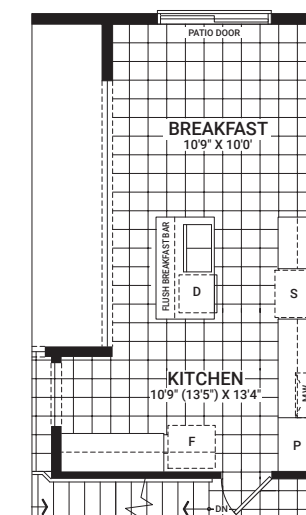


SECOND FLOOR

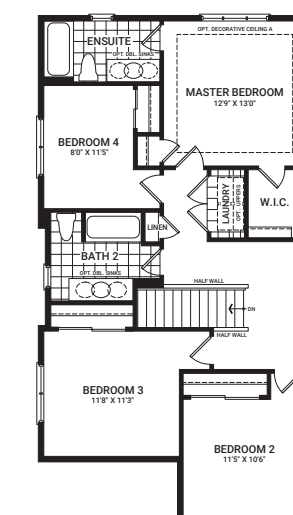


Flex Plans

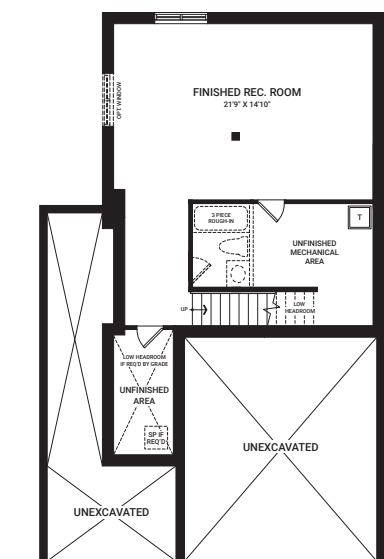
OPTIONAL KITCHEN LAYOUT A



OPTIONAL 4 BEDROOM SECOND FLOOR



OPTIONAL FINISHED BASEMENT
REC. ROOM



All plans, dimensions, and specifications are subject to change without notice. Actual usable floor space may vary from the stated floor area. Column locations, window locations, and sizes may vary and are subject to change without notice. Renderings are artist's concept only. E.&O.E. July, 2020

*Ask our Sales Agents about other options for this home.



Homes and communities designed for a life well lived

Purchasing a home is one of the most important decisions you'll ever make. We're happy to offer each of our homeowners over 65 years of dedicated and committed building experience so you can make that decision with confidence.

At Minto Communities Ottawa, we're building better places to live, work, and play — one home and one relationship at a time. We have an ongoing investment in the health of this city's residents and the

communities they call home. It's all about the special moments for us. We've built homes across Ottawa for generations, but what we're most proud of is the connections we've made with our homeowners and sharing the excitement of handing over a new set of keys.

We are part of Minto Group, a home builder, developer, property and investment manager for over 65 years that began here in Ottawa and has since grown to Toronto and the GTA, London, Calgary, Edmonton, and Florida, USA.

CALGARY | EDMONTON | FLORIDA | TORONTO & GTA | LONDON | OTTAWA

Our homes are designed and built for the way you live, where life's necessities are close at hand — often just a walk away.

Proud supporters of the Children's Hospital of Eastern Ontario (CHEO)





Minutes away by car from our Avalon communities	
Downtown	30 Minutes
HWY 174	10 Minutes
Place d'Orléans	13 Minutes
Shenkman Arts Centre	11 Minutes

Legend

SHOPPING CENTRES

- Shops at Tenth Line**
BMO Bank of Montreal
Sobeys
Beer Store
Mr. Lube
Little Caesars Pizza
Persis Grill
Anytime Fitness
St. Louis Bar and Grill
RBC Royal Bank
And more...
- SmartCentres Orléans**
Walmart Orléans Supercentre
Wendy's
Boston Pizza
Payless ShoeSource
EB Games
Shoppers Drug Mart
Bell
PetSmart
Popeye's Supplements
Best Buy
Dollarama
Canadian Tire
McDonald's
And more...
- RioCan Orléans**
Mandarin Restaurant
Houle Sports
The Home Depot
Burger King
Metro
Kelseys Original Roadhouse
JYSK
Staples
Starbucks
And more...
- Fallingbrook Shopping Centre**
Metro
Select Blooms (Florist)
Sushi Village
Dairy Queen
The King Shawarma
Pizza Pizza
Bite Burger House
And more...
- Place d'Orléans Shopping Centre**
Freedom Mobile
GoodLife Fitness
Eddie Bauer
Farm Boy
Urban Planet
Rexall Drugstore
American Eagle Outfitters
David's Tea
EB Games
H&M
H&R Block
Hudson's Bay Company
Sport Chek
BMO Bank of Montreal

SERVICES

- Shoppers Drug Mart
- Farm Boy
- M&M Food Market
- Mattress Mart
- Real Canadian Superstore
- LCBO
- Ottawa Public Library
- Ottawa Fire Station 53
- Orléans Home Hardware
- Winners & HomeSense
- Value Village
- Innes Dental Clinic
- BMO Bank of Montreal

CULTURE & ENTERTAINMENT

- Shenkman Arts Centre
- Ottawa School of Art Orléans Campus

DINING

- The Barley Mow
- McDonald's
- Chocolats Favoris
- Starbucks
- Broadway Bar and Grill
- Occo Kitchen
- The Cross Bar

SPORTS & RECREATION

- Fit4Less
- Ray Friel Recreation Complex
- GoodLife Fitness Ottawa Orléans Tenth Line
- CrossFit Fortis

SCHOOLS

Ottawa Carleton District School Board

- Summerside Public School
- Avalon Public School
- Maple Ridge Elementary School
- Fallingbrook Community Elementary School
- Dunning-Foubert Elementary School
- Henry Larsen Elementary School
- Cairine Wilson Secondary School
- Forest Valley Elementary School
- Sir Wilfrid Laurier Secondary School

Ottawa Catholic School Board (French)

- École élémentaire catholique Notre-Place
- École élémentaire catholique Alain-Fortin
- École élémentaire catholique Notre-Dame-des-Champs
- École élémentaire catholique De La Découverte
- Collège catholique Mer Bleue

Ottawa Catholic School Board

- St. Dominic School
- St. Theresa Catholic School
- Portobello School Age Program

Public School Council of Eastern Ontario (French)

- École élémentaire publique Des Sentiers

TRANSIT

- OC Transpo - Orléans Park & Ride

- ★ Minto Orléans Sales Centre

Thank you for visiting.

AVALON



OTTAWA
BUILDER
OF THE YEAR
2019

AVALON

2370 Tenth Line Road (across from Southfield Way), Ottawa, ON K4A 3W4
613.834.6400 | AvalonSales@minto.com | mintoavalon.com

