



AVALON

Executive  
Townhomes





Welcome to Avalon —  
the heart of Orléans.

Come home to a neighbourhood over  
20 years in the making that has brought  
over 5,000 families closer together.

Avalon grows with  
thoughtfully designed  
homes carefully crafted to  
bring joy and well-being for  
generations to come.





## It's all within reach

From transit to shopping, entertainment and recreation, schools and parks — both within and surrounding the neighbourhood — Avalon homeowners enjoy easy access to everything Orléans has to offer.



## Live well

Intertwined with walking and running paths, water features, parks and green spaces, design an active, healthy lifestyle in Avalon. It's here to be enjoyed.



Relax in an environment  
carefully designed with your  
well-being in mind



Live comfortably thanks to  
the latest in construction  
technologies



Build lasting community  
connections with  
neighbours



Breathe easier  
with the latest  
fresh air systems



Nurture a healthy, active  
lifestyle with parks and  
green spaces



Embrace personal  
comfort with Smarter  
Home technology



Feel energized in  
brightly lit open-concept  
living spaces



AVALON  
AQUAVIEW

## Where convenience meets nature

Stay connected to the things that matter in a community of thoughtfully designed homes on premium lots nestled around manicured pathways and parks that surround the community's central water feature.



Aquaview Pond



## heart

Here, nature is right at the doorstep of Avalon Aquaview, and life's necessities are never out of reach. Intertwined walking and running trails offer families an active, healthy lifestyle from day one and convenient, family-favourite amenities all within a short distance between Tenth Line and Innes Road.



The Tahoe





## From frame to finishes — have it all

A thoughtfully designed home is just the beginning of life in an Avalon community. Choose from our full collection of bright and dynamic floorplans, superbly crafted with open, connected space for joyful gatherings and carefully considered exteriors for beautiful curb appeal.

Finished  
Basements

Convenient,  
contemporary living

Designed with your  
well-being in mind

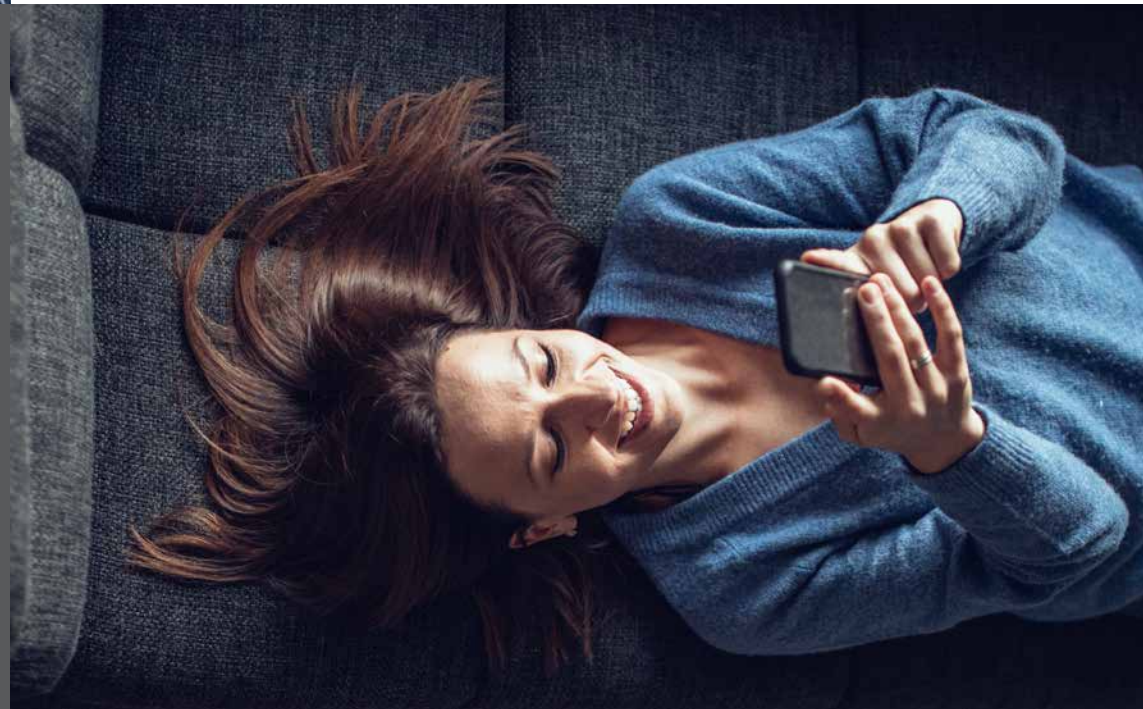


## Designed for life

Select inspiring finishes and striking fixtures with the help of our experts at the Design Centre.

## Smarter Homes

Track and control the comfort and performance of your home from a single intuitive mobile app wherever you are, whenever you want.







## Executive Townhomes

Superbly designed and wonderfully livable, our Executive Townhomes are made for family memories. Enjoy open-concept living space and a finished basement.

AVALON

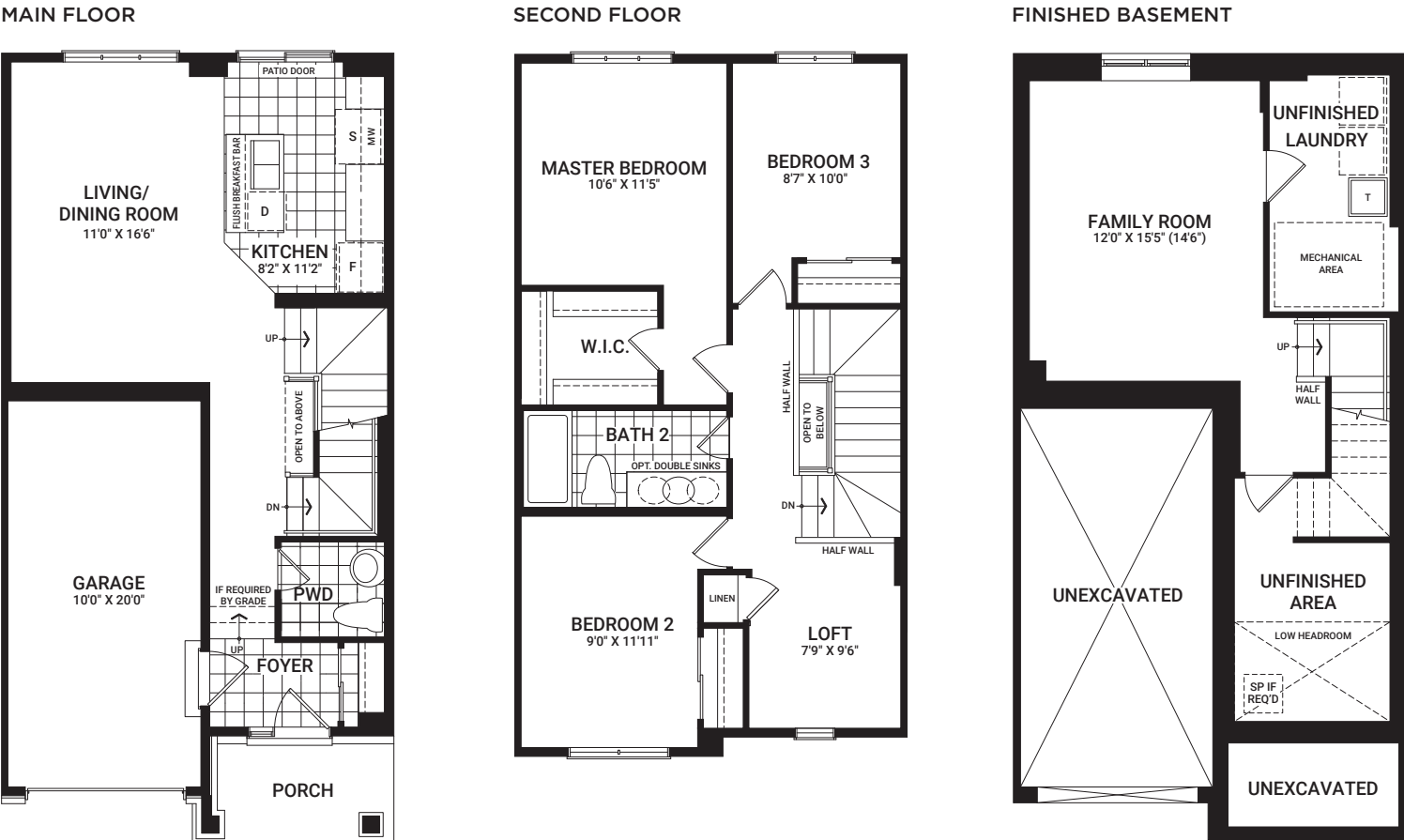




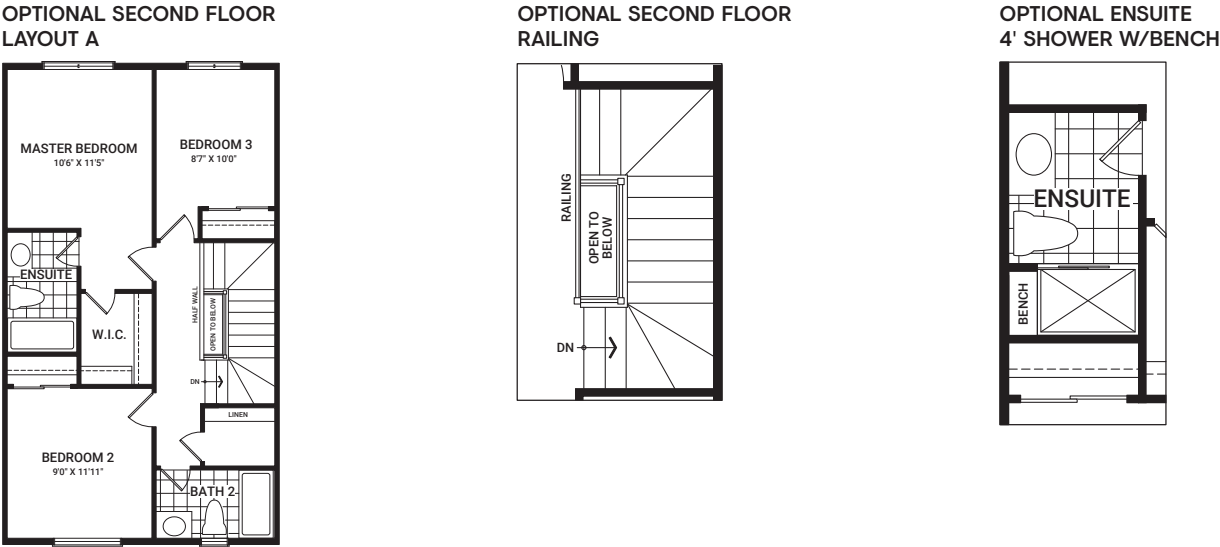


Citrus

1,551 sq. ft.\* | Interior Only



Flex Plans

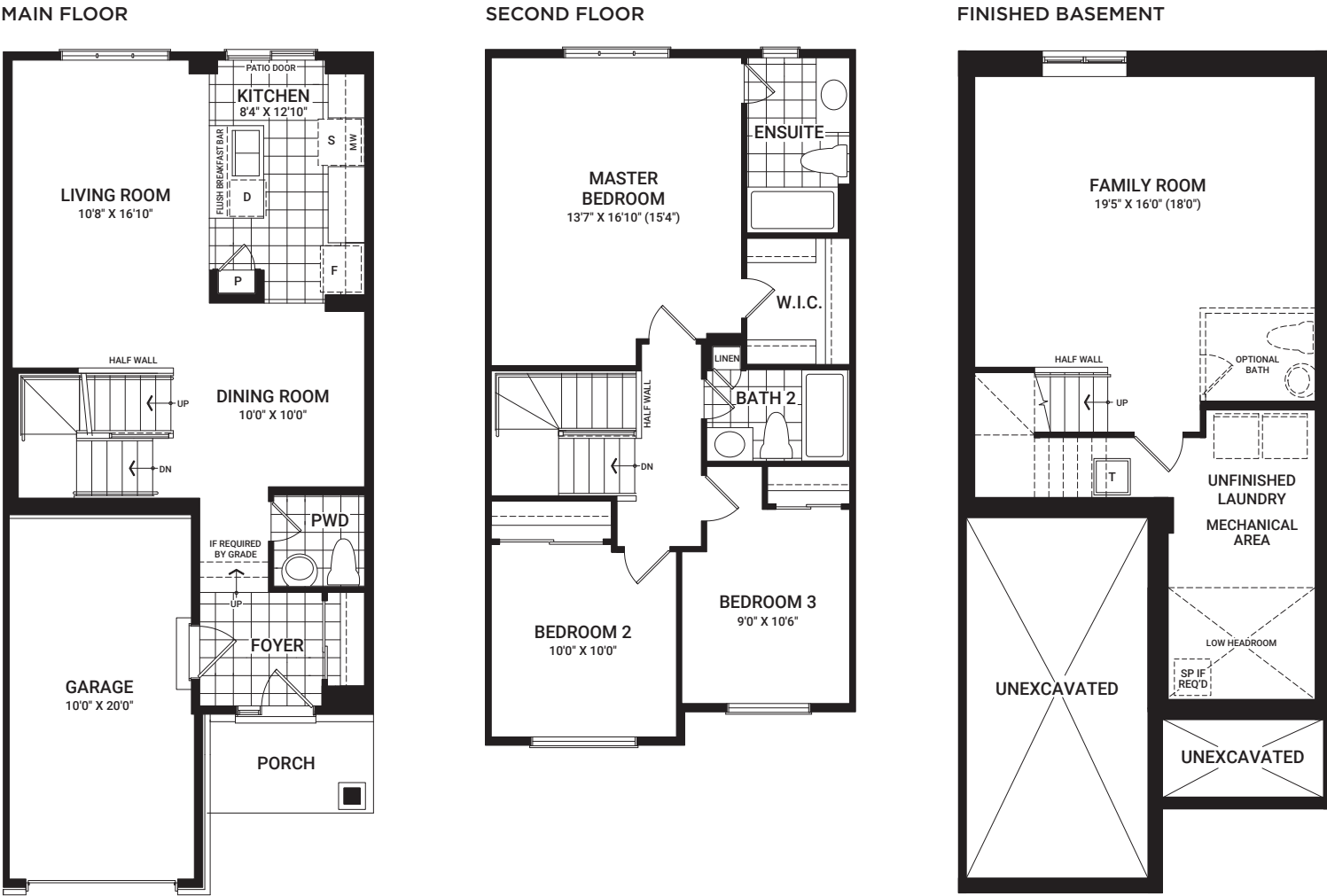


\*Based on Elevation B. Includes finished space in basement. Ask our Sales Agents about other options for this home.

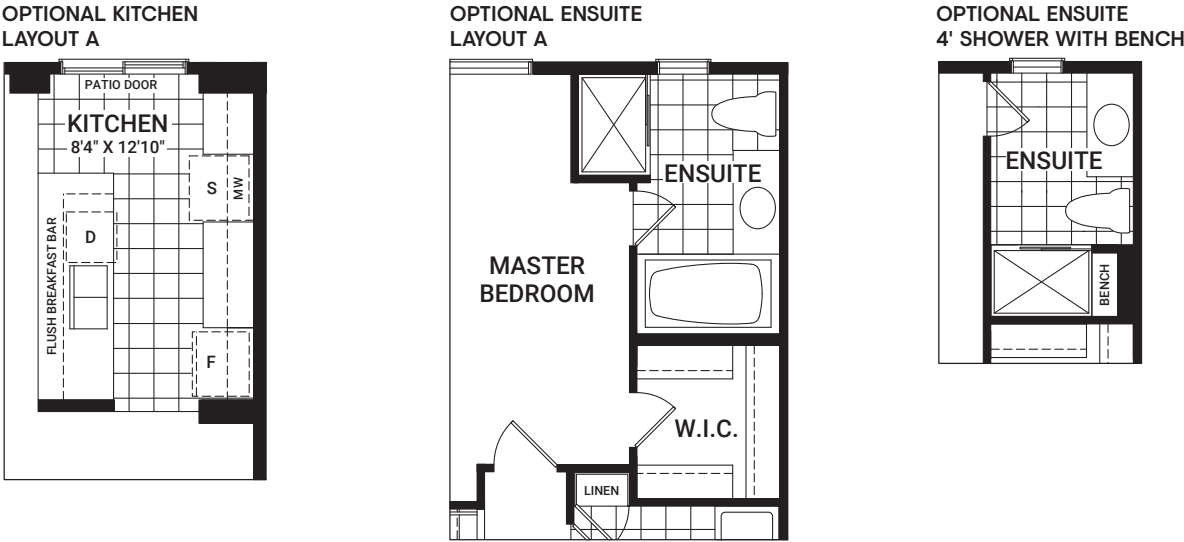
All plans, dimensions, and specifications are subject to change without notice. Actual usable floor space may vary from the stated floor area. Column locations, window locations, and sizes may vary and are subject to change without notice. Renderings are artist's concept only. E.&O.E. January, 2020

Haven

1,768 sq. ft.\* | Interior Only



Flex Plans



\*Based on Elevation B. Includes finished space in basement. Ask our Sales Agents about other options for this home.

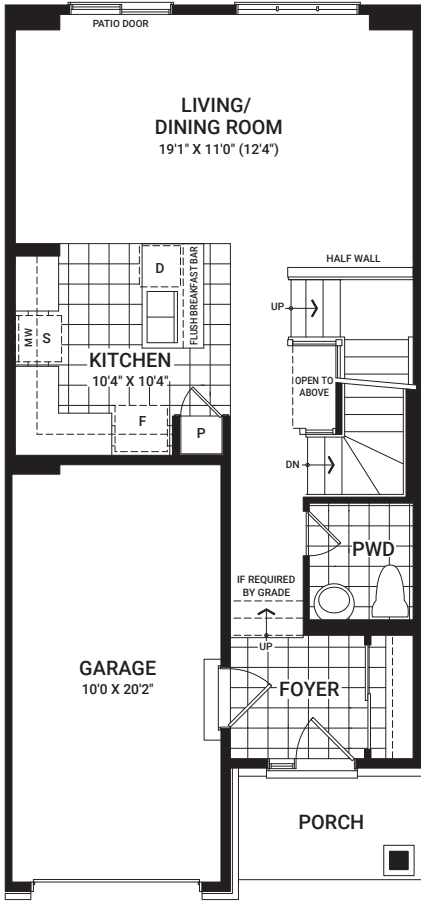
All plans, dimensions, and specifications are subject to change without notice. Actual usable floor space may vary from the stated floor area. Column locations, window locations, and sizes may vary and are subject to change without notice. Renderings are artist's concept only. E.&O.E. January, 2020



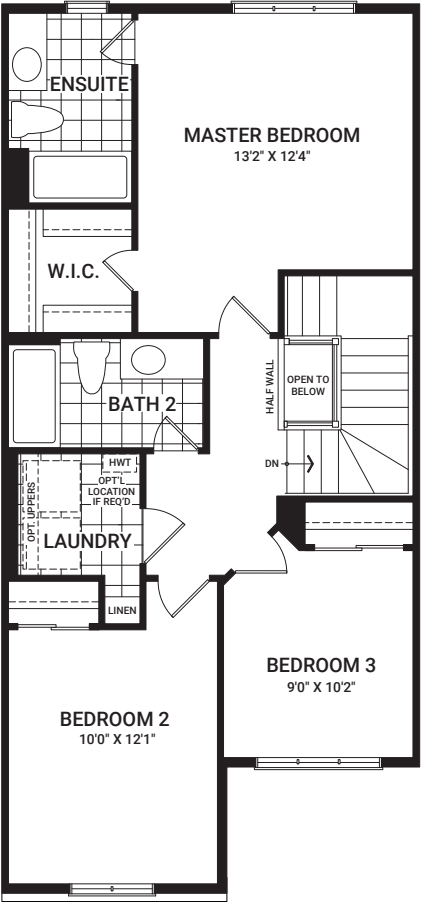
# Laguna

1,786 sq. ft.\* | Interior

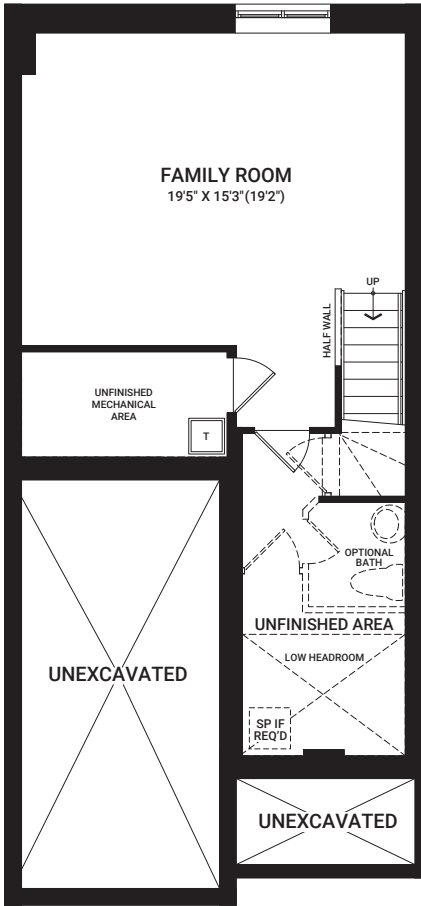
MAIN FLOOR



SECOND FLOOR



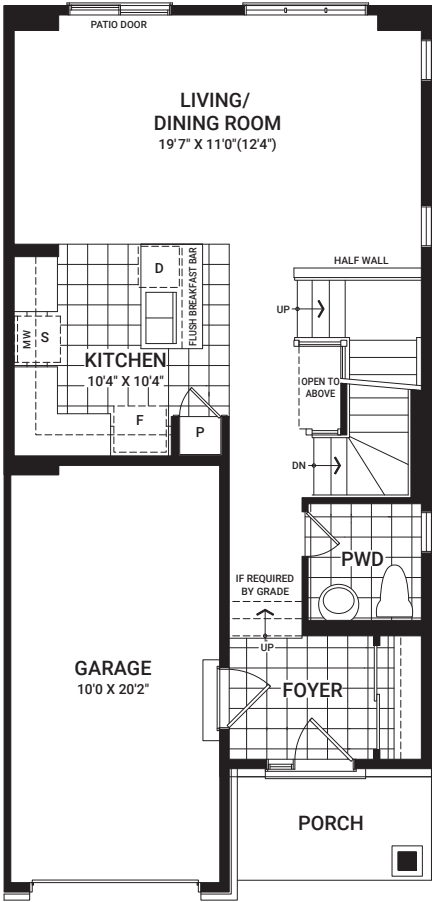
FINISHED BASEMENT



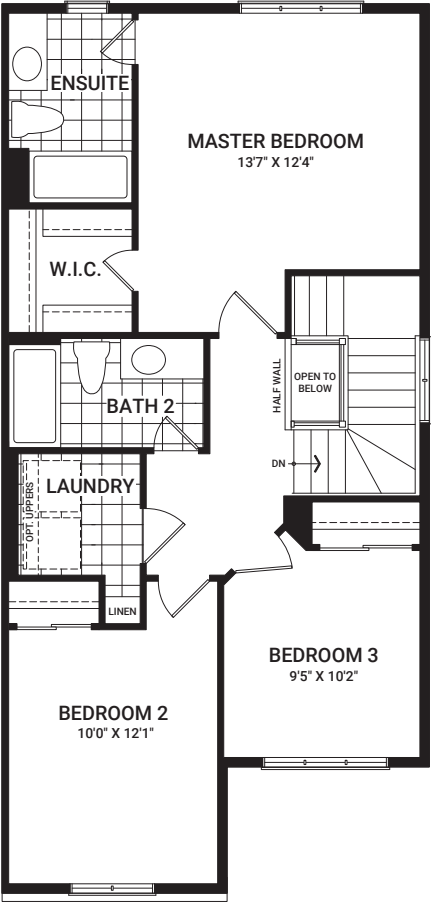
# Laguna End

1,828 sq. ft.\* | End

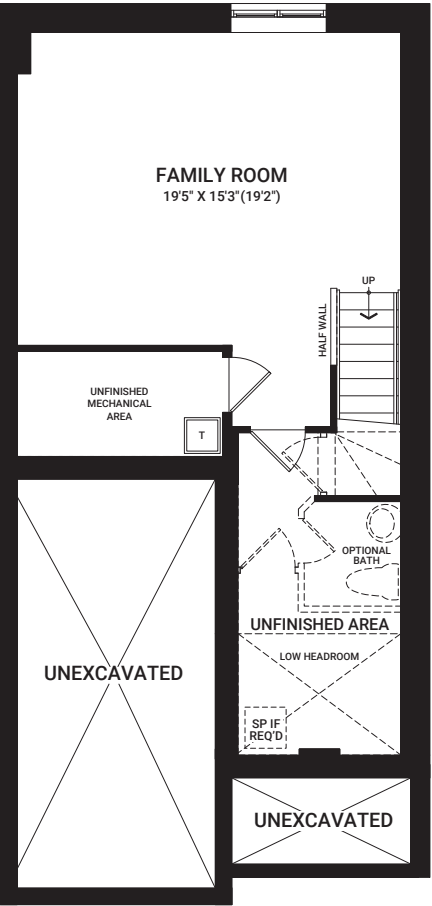
MAIN FLOOR



SECOND FLOOR

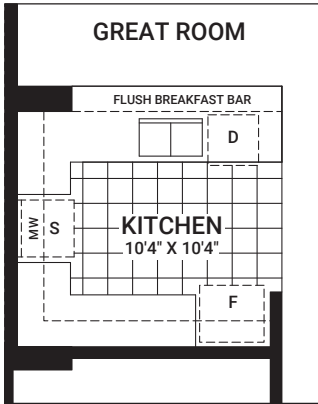


FINISHED BASEMENT

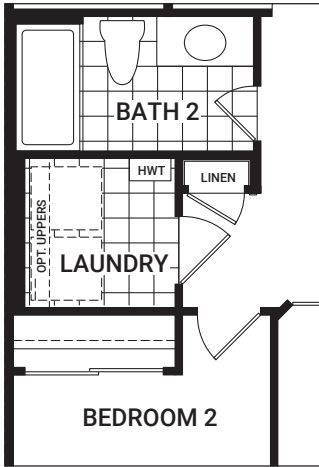


## Flex Plans

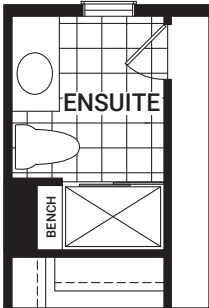
OPTIONAL KITCHEN LAYOUT A



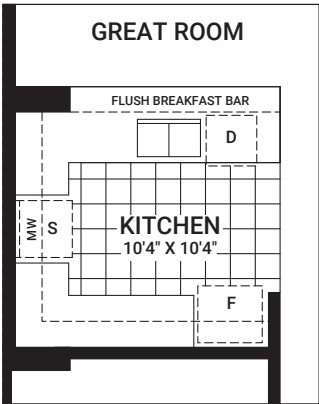
OPTIONAL SECOND FLOOR LAYOUT A



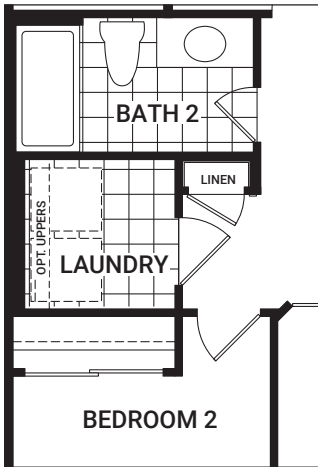
OPTIONAL ENSUITE 4' SHOWER WITH BENCH



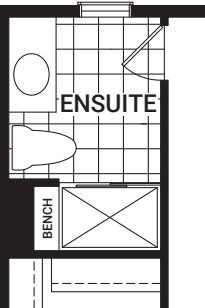
OPTIONAL KITCHEN LAYOUT A



OPTIONAL SECOND FLOOR LAYOUT A



OPTIONAL ENSUITE 4' SHOWER WITH BENCH



\*Based on Elevation B. Includes finished space in basement. Ask our Sales Agents about other options for this home.

All plans, dimensions, and specifications are subject to change without notice. Actual usable floor space may vary from the stated floor area. Column locations, window locations, and sizes may vary and are subject to change without notice. Renderings are artist's concept only. E.&O.E. January, 2020

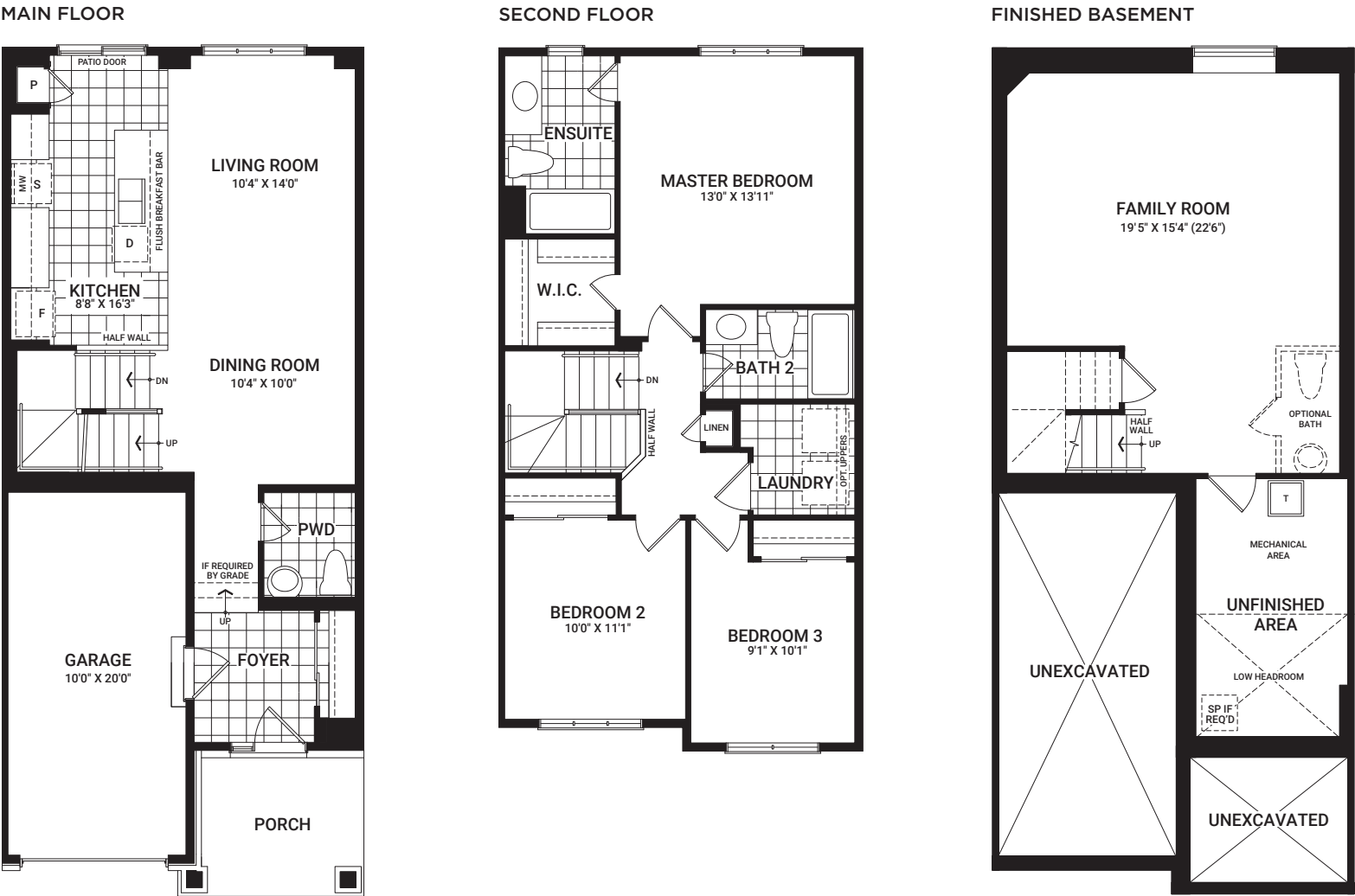
\*Based on Elevation B. Includes finished space in basement. Ask our Sales Agents about other options for this home.

All plans, dimensions, and specifications are subject to change without notice. Actual usable floor space may vary from the stated floor area. Column locations, window locations, and sizes may vary and are subject to change without notice. Renderings are artist's concept only. E.&O.E. January, 2020

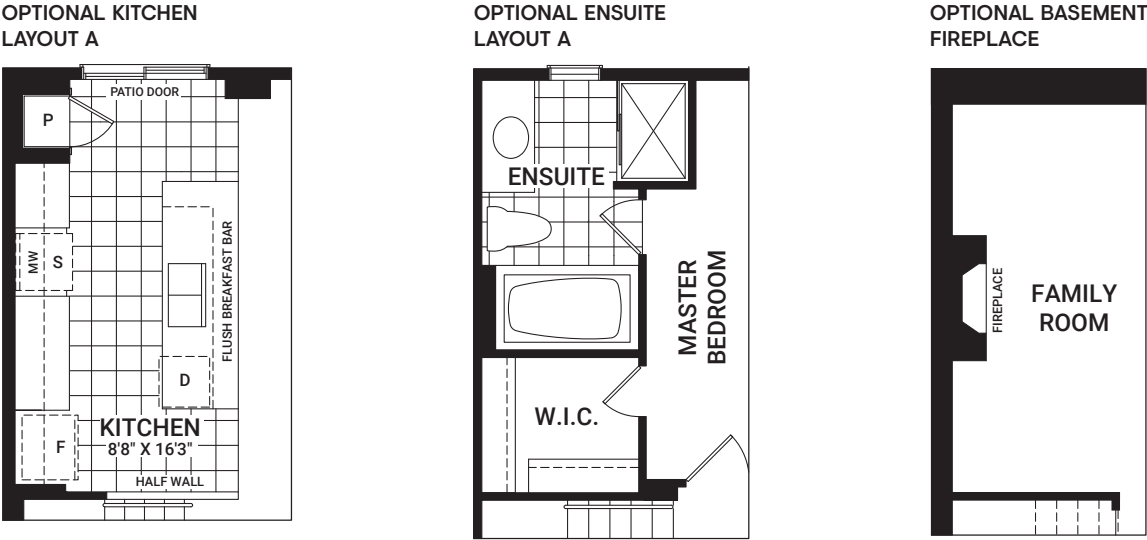


Monterey

1,873 sq. ft.\* | Interior



Flex Plans

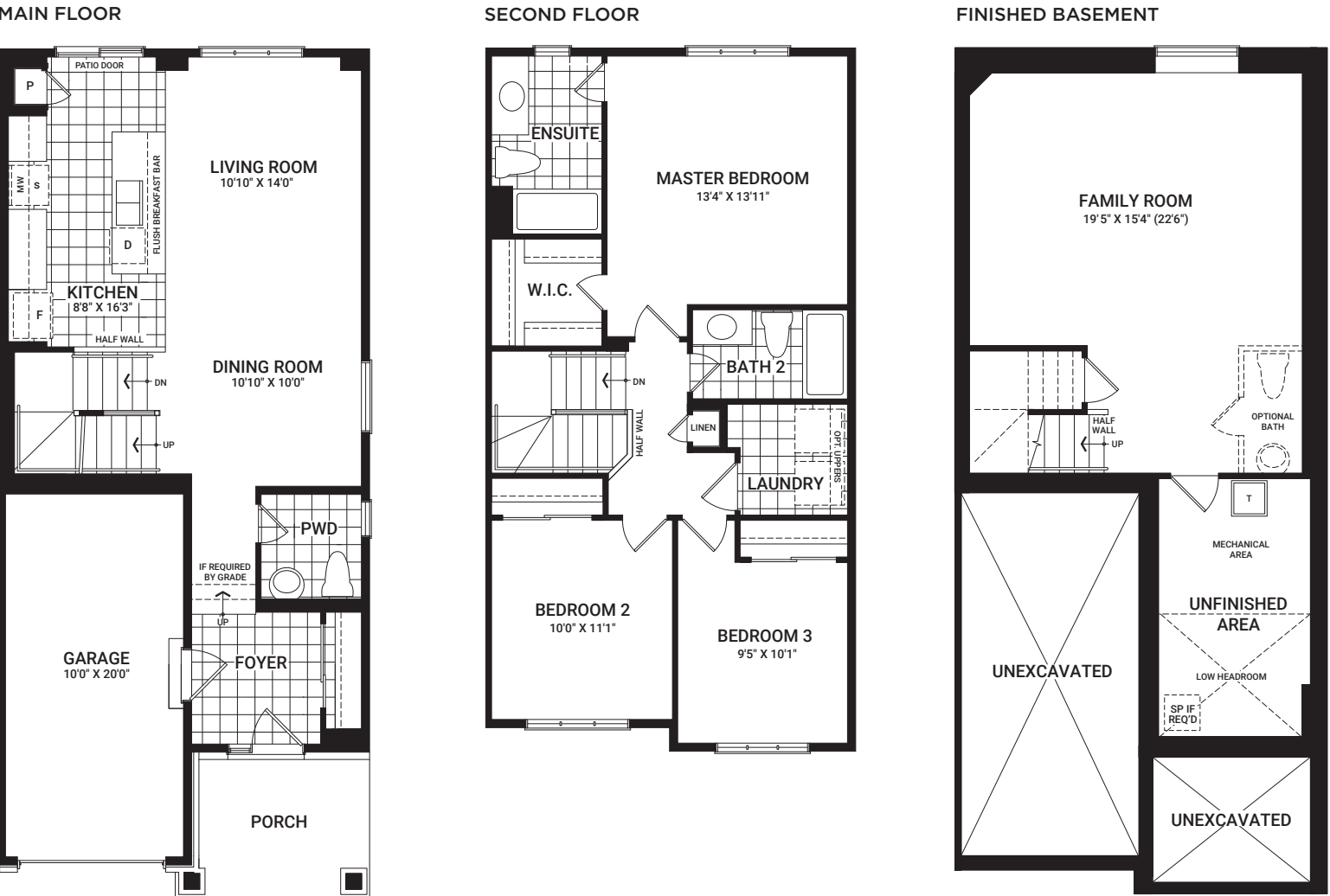


\*Based on Elevation B. Includes finished space in basement. Ask our Sales Agents about other options for this home.

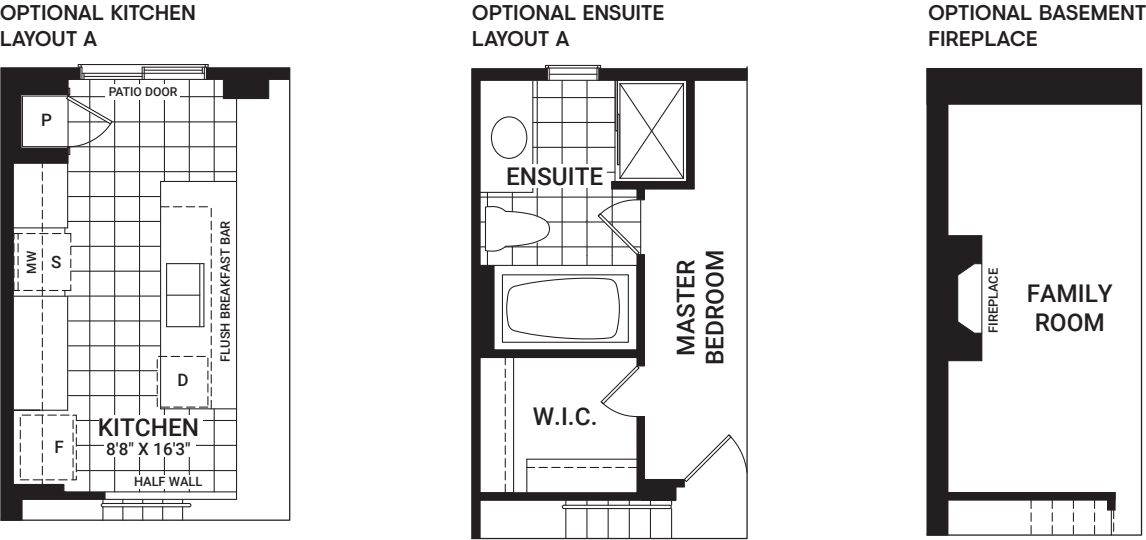
All plans, dimensions, and specifications are subject to change without notice. Actual usable floor space may vary from the stated floor area. Column locations, window locations, and sizes may vary and are subject to change without notice. Renderings are artist's concept only. E.&O.E. January, 2020

Monterey End

1,918 sq. ft.\* | End



Flex Plans



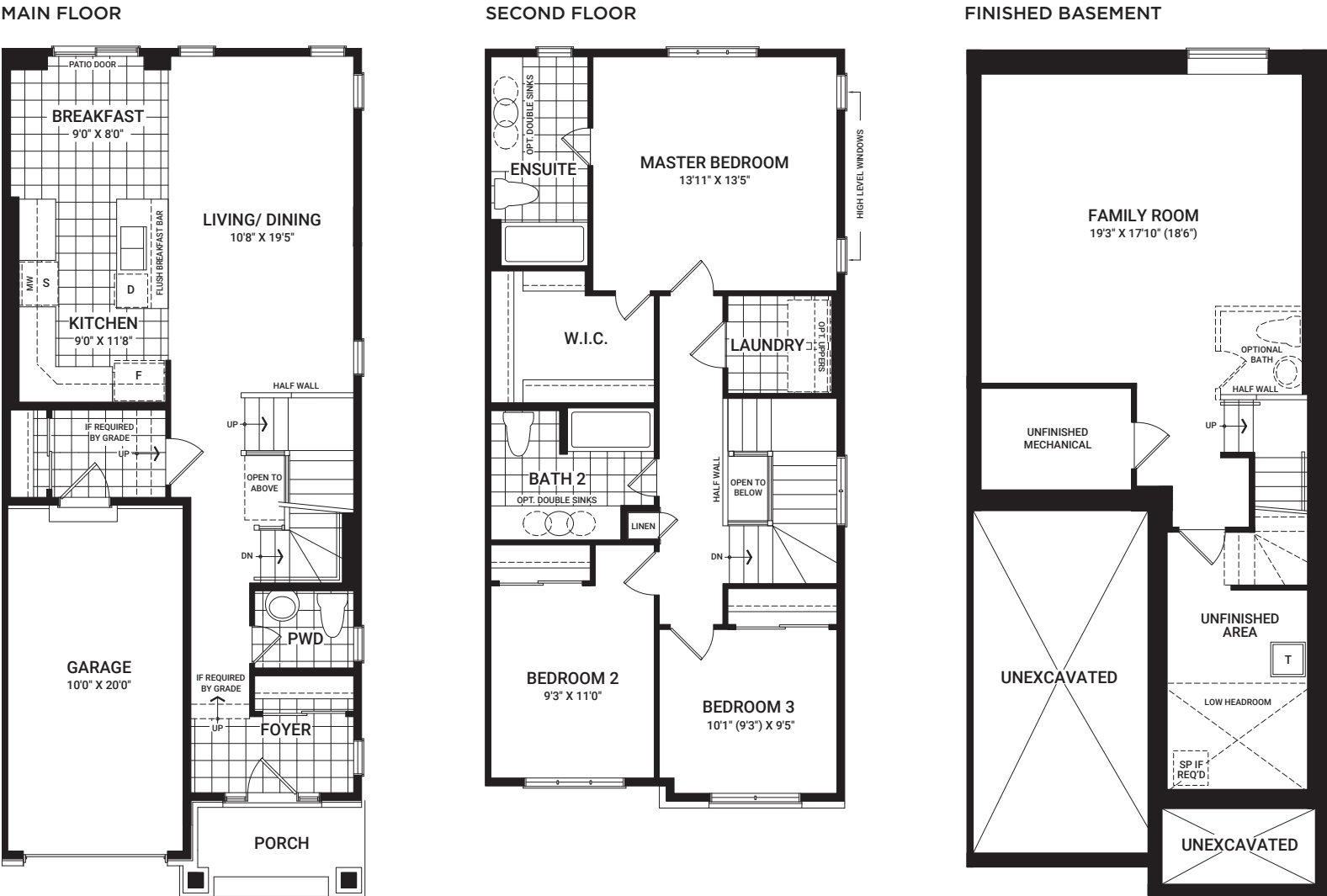
\*Based on Elevation B. Includes finished space in basement. Ask our Sales Agents about other options for this home.

All plans, dimensions, and specifications are subject to change without notice. Actual usable floor space may vary from the stated floor area. Column locations, window locations, and sizes may vary and are subject to change without notice. Renderings are artist's concept only. E.&O.E. January, 2020

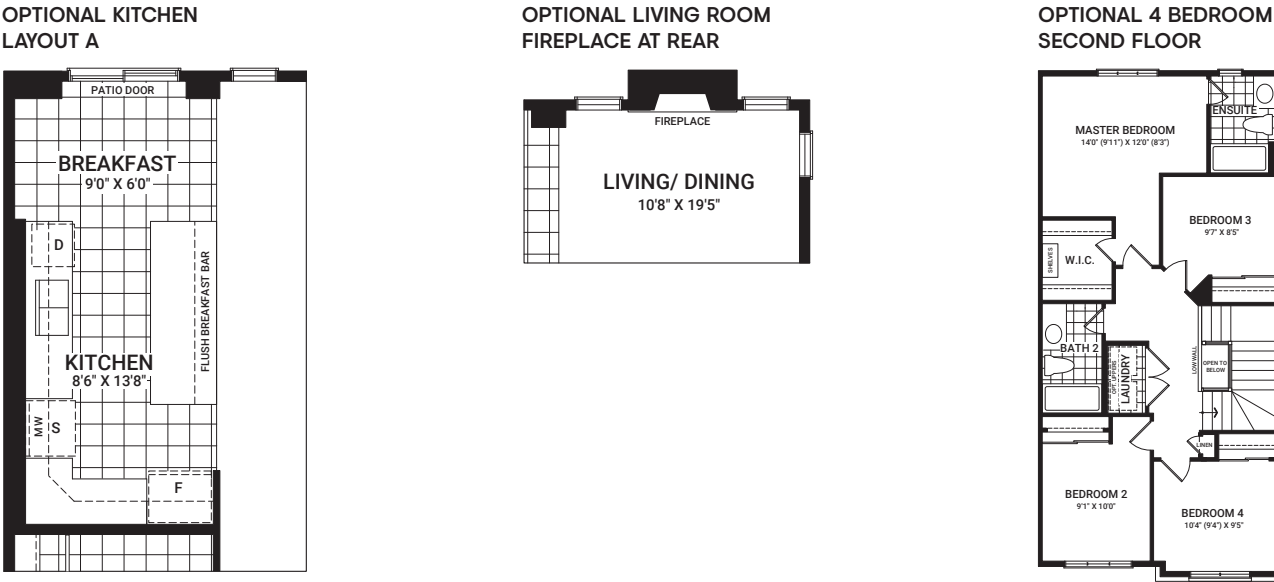


Tahoe End

2,084 sq. ft.\* | End Only



Flex Plans

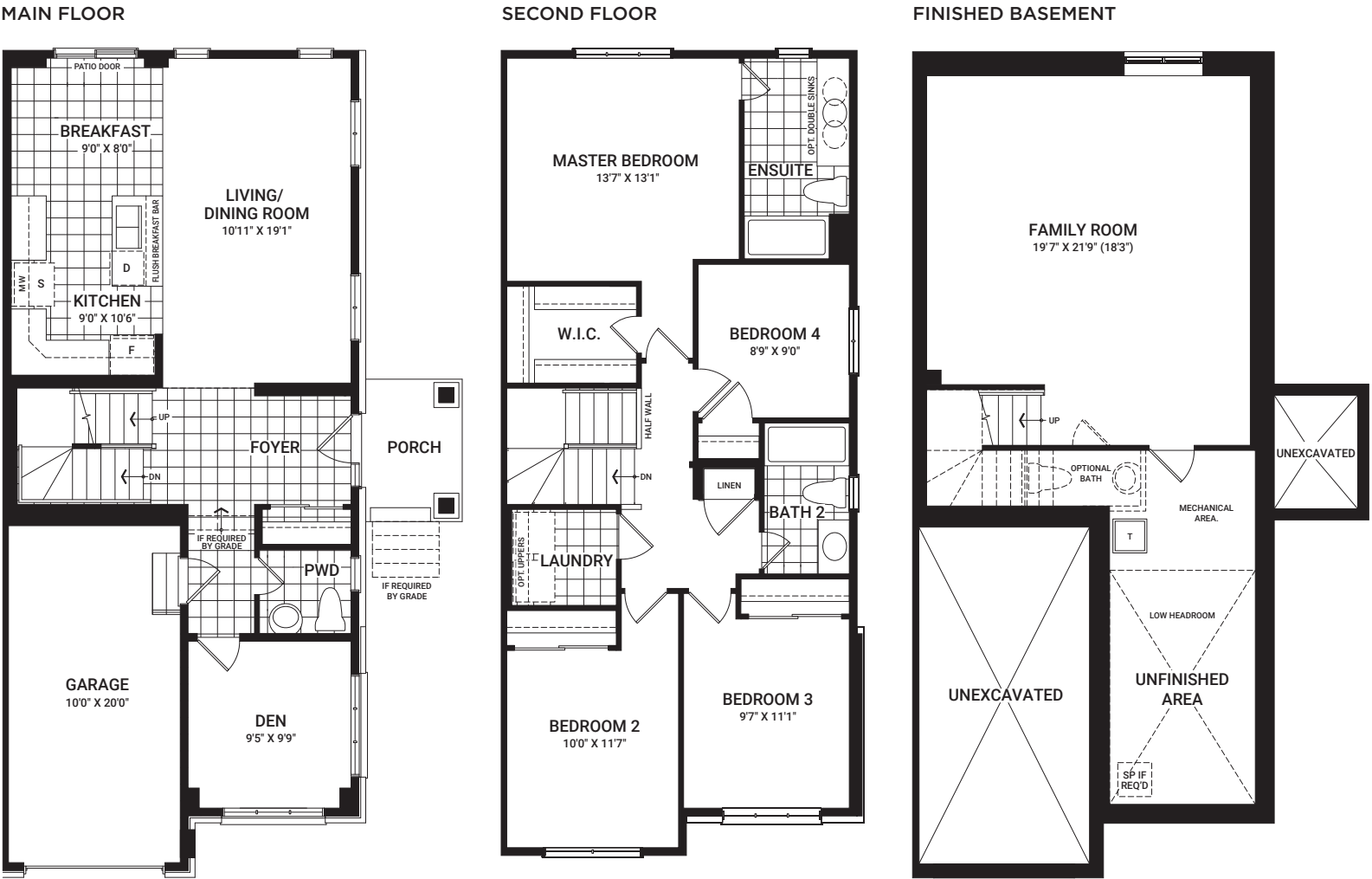


\*Based on Elevation B. Includes finished space in basement. Ask our Sales Agents about other options for this home.

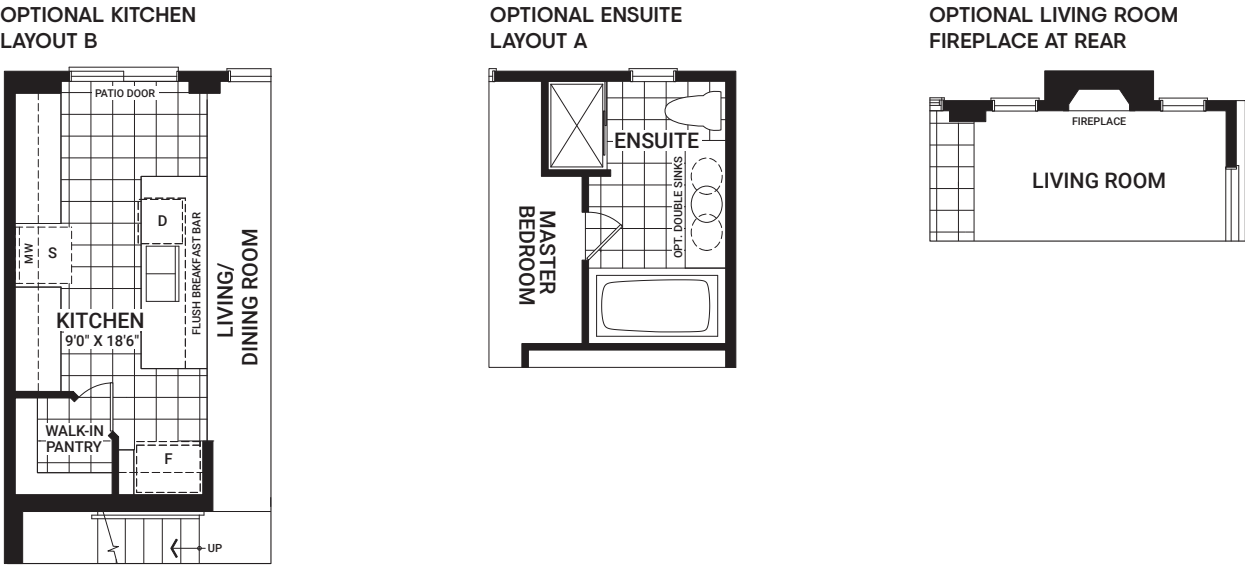
All plans, dimensions, and specifications are subject to change without notice. Actual usable floor space may vary from the stated floor area. Column locations, window locations, and sizes may vary and are subject to change without notice. Renderings are artist's concept only. E.&O.E. January, 2020

Venice Corner

2,218 sq. ft.\* | Corner Only



Flex Plans



\*Based on Elevation B. Includes finished space in basement. Ask our Sales Agents about other options for this home.

All plans, dimensions, and specifications are subject to change without notice. Actual usable floor space may vary from the stated floor area. Column locations, window locations, and sizes may vary and are subject to change without notice. Renderings are artist's concept only. E.&O.E. January, 2020





## Homes and communities designed for a life well lived

Purchasing a home is one of the most important decisions you'll ever make. We're happy to offer each of our homeowners over 65 years of dedicated and committed building experience so you can make that decision with confidence.

At Minto Communities Ottawa, we're building better places to live, work, and play — one home and one relationship at a time. We have an ongoing investment in the health of this city's residents and the

communities they call home. It's all about the special moments for us. We've built homes across Ottawa for generations, but what we're most proud of is the connections we've made with our homeowners and sharing the excitement of handing over a new set of keys.

We are part of Minto Group, a home builder, developer, property and investment manager for over 65 years that began here in Ottawa and has since grown to Toronto and the GTA, London, Calgary, Edmonton, and Florida, USA.

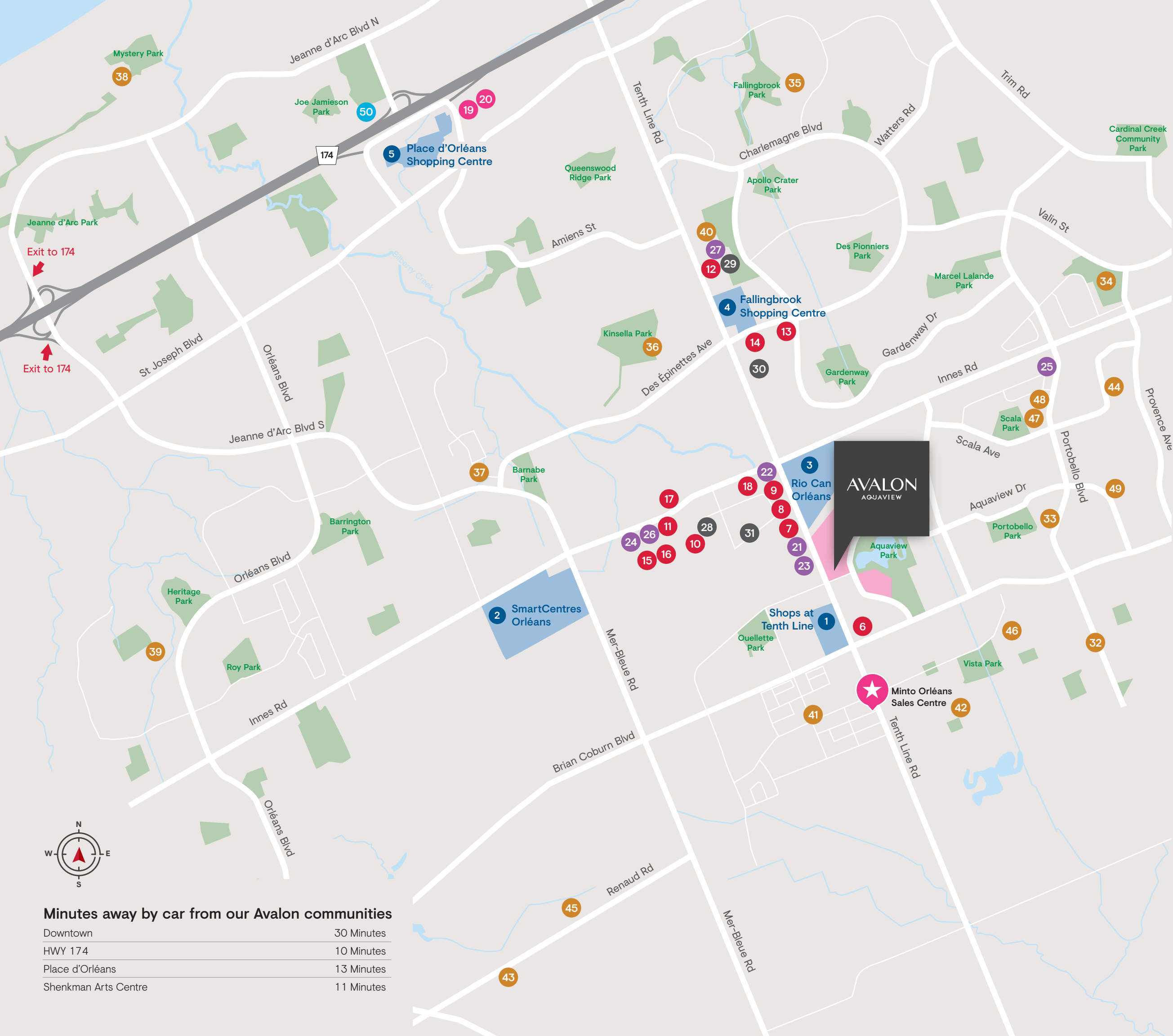
CALGARY | EDMONTON | FLORIDA | TORONTO & GTA | LONDON | OTTAWA

Our homes are designed and built for the way you live, where life's necessities are close at hand — often just a walk away.

Proud supporters of the Children's Hospital of Eastern Ontario (CHEO)







Legend

SHOPPING CENTRES

1. Shops at Tenth Line

- BMO Bank of Montreal
- Sobeys
- Beer Store
- Mr. Lube
- Little Caesars Pizza
- Persis Grill
- Anytime Fitness
- St. Louis Bar and Grill
- RBC Royal Bank
- And more...

2. SmartCentres Orléans

- Walmart Orléans Supercentre
- Wendy's
- Boston Pizza
- Payless ShoeSource
- EB Games
- Shoppers Drug Mart
- Bell
- PetSmart
- Popeye's Supplements
- Best Buy
- Dollarama
- Canadian Tire
- McDonald's
- And more...

3. RioCan Orléans

- Mandarin Restaurant
- Houle Sports
- The Home Depot
- Burger King
- Metro
- Kelseys Original Roadhouse
- JYSK
- Staples
- Starbucks
- And more...

4. Fallingbrook Shopping Centre

- Metro
- Select Blooms (Florist)
- Sushi Village
- Dairy Queen
- The King Shawarma
- Pizza Pizza
- Bite Burger House
- And more...

5. Place d'Orléans Shopping Centre

- Freedom Mobile
- GoodLife Fitness
- Eddie Bauer
- Farm Boy
- Urban Planet
- Rexall Drugstore
- American Eagle Outfitters
- David's Tea
- EB Games
- H&M
- H&R Block
- Hudson's Bay Company
- Sport Chek
- BMO Bank of Montreal

SERVICES

- 6. Shoppers Drug Mart
- 7. Farm Boy
- 8. M&M Food Market
- 9. Mattress Mart
- 10. Real Canadian Superstore
- 11. LCBO
- 12. Ottawa Public Library
- 13. Ottawa Fire Station 53
- 14. Orléans Home Hardware
- 15. Winners & HomeSense
- 16. Value Village
- 17. Innes Dental Clinic
- 18. BMO Bank of Montreal

CULTURE & ENTERTAINMENT

- 19. Shenkman Arts Centre
- 20. Ottawa School of Art Orléans Campus

DINING

- 21. The Barley Mow
- 22. McDonald's
- 23. Chocolats Favoris
- 24. Starbucks
- 25. Broadway Bar and Grill
- 26. Occo Kitchen
- 27. The Cross Bar

SPORTS & RECREATION

- 28. Fit4Less
- 29. Ray Friel Recreation Complex
- 30. GoodLife Fitness Ottawa Orléans Tenth Line
- 31. CrossFit Fortis

SCHOOLS

Ottawa Carleton District School Board

- 32. Summerside Public School
- 33. Avalon Public School
- 34. Maple Ridge Elementary School
- 35. Fallingbrook Community Elementary School
- 36. Dunning-Foubert Elementary School
- 37. Henry Larsen Elementary School
- 38. Cairine Wilson Secondary School
- 39. Forest Valley Elementary School
- 40. Sir Wilfrid Laurier Secondary School

Ottawa Catholic School Board (French)

- 41. École élémentaire catholique Notre-Place
- 42. École élémentaire catholique Alain-Fortin
- 43. École élémentaire catholique Notre-Dame-des-Champs
- 44. École élémentaire catholique De La Découverte
- 45. Collège catholique Mer Bleue

Ottawa Catholic School Board

- 46. St. Dominic School
- 47. St. Theresa Catholic School
- 48. Portobello School Age Program

Public School Council of Eastern Ontario (French)

- 49. École élémentaire publique Des Sentiers

TRANSIT

- 50. OC Transpo - Orléans Park & Ride

- ★ Minto Orléans Sales Centre



Thank you for visiting.

AVALON

Business Card

Business Card





OTTAWA  
BUILDER  
OF THE YEAR  
**2019**

AVALON

2370 Tenth Line Road (across from Southfield Way), Ottawa, ON K4A 3W4  
613.834.6400 | AvalonSales@minto.com | mintoavalon.com

