



**MORGAN'S  
CREEK**

**Avenue  
Townhomes**



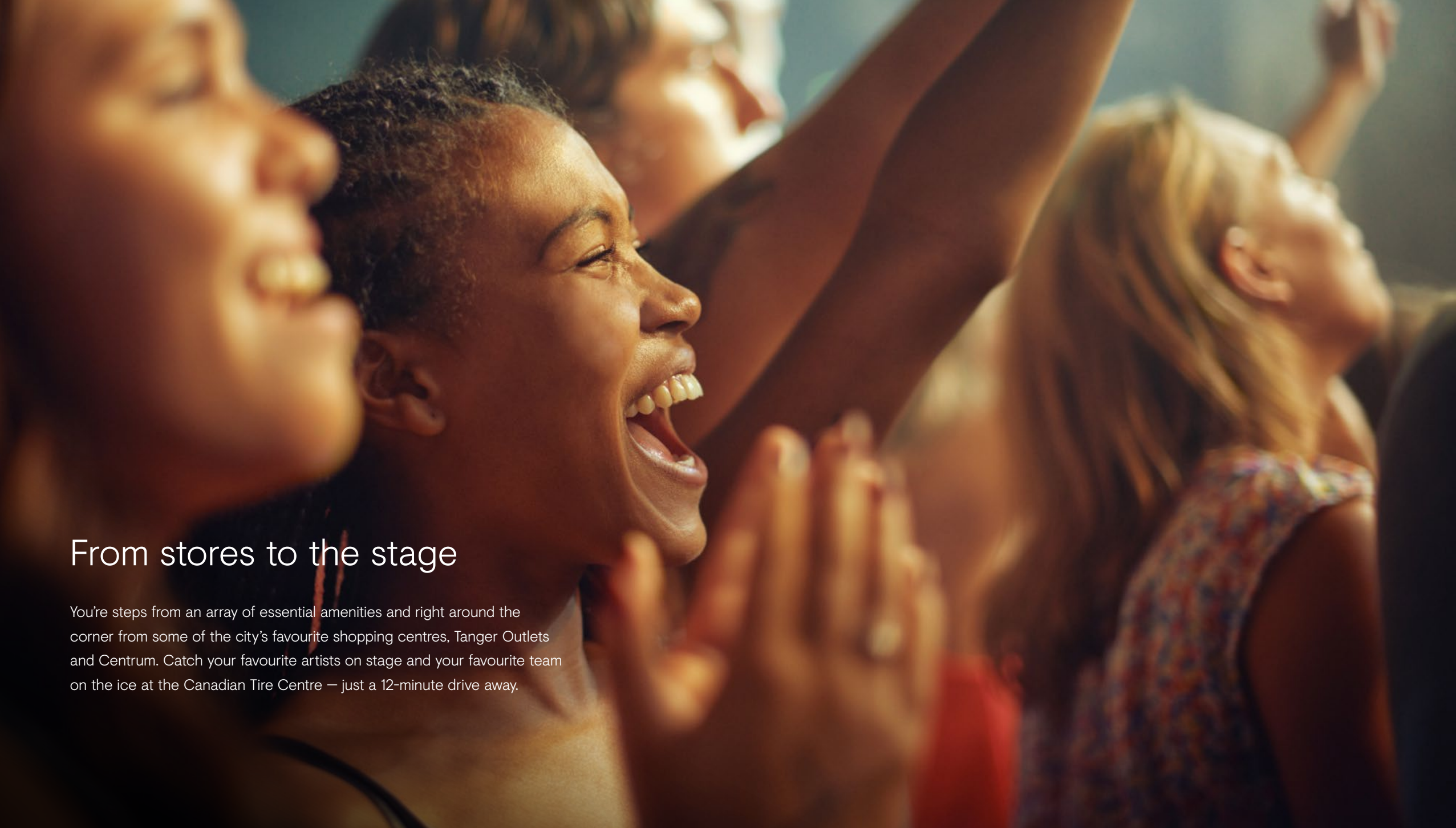


Embrace stylish,  
low-maintenance living in  
Morgan's Creek and spend  
more time on yourself doing  
the things that matter.

## Morgan's Creek, Kanata

A boutique collection of homes in Kanata North. With an emphasis on exceptional design and a close proximity to work, your favourite amenities, and an abundance of green space, Morgan's Creek feels like home the moment you arrive.





## From stores to the stage

You're steps from an array of essential amenities and right around the corner from some of the city's favourite shopping centres, Tanger Outlets and Centrum. Catch your favourite artists on stage and your favourite team on the ice at the Canadian Tire Centre — just a 12-minute drive away.



connected



Enjoy the calming  
benefits of living near  
the water



Live comfortably thanks to  
the latest in construction  
technologies



Embrace personal  
comfort with Smarter  
Home technology



Relax in an environment  
carefully designed with your  
well-being in mind



Feel energized in  
brightly lit open-concept  
living spaces



Breathe easier  
with the latest  
fresh air systems

## Live well

Escape the daily grind in Morgan's Creek  
and take time to slow down and refresh.





## Design it your way

With the help of our dedicated Design Centre Team, turn your interior design dreams into a reality with carefully selected fixtures, finishes, and a variety of framing options.



The Canal

## From frame to finishes

Your new open-concept home has been expertly crafted from foundation to the final touches, adhering to the latest in sustainable building practices.



The Downing

## The choice is yours

Contemporary design shines in Morgan's Creek. Our full collection of spacious and modern homes are designed with care inside and out. Expertly crafted exteriors provide beautiful curb appeal and the latest trends in features and finishes let your personality shine through in every detail.

Open plan spaces with an inviting flow from room to room

Large windows for plenty of natural light

Large outdoor balcony and deep garage for storage





## Avenue Townhomes

Beautiful, contemporary open plan spaces designed with 9' smooth main-floor ceilings, natural light and a great balcony access.

Ask about our Flex Plan options to see how you can personalize your home. There are limited Flex Plan selections on the second floor for the number of bathrooms.

**MORGAN'S  
CREEK**





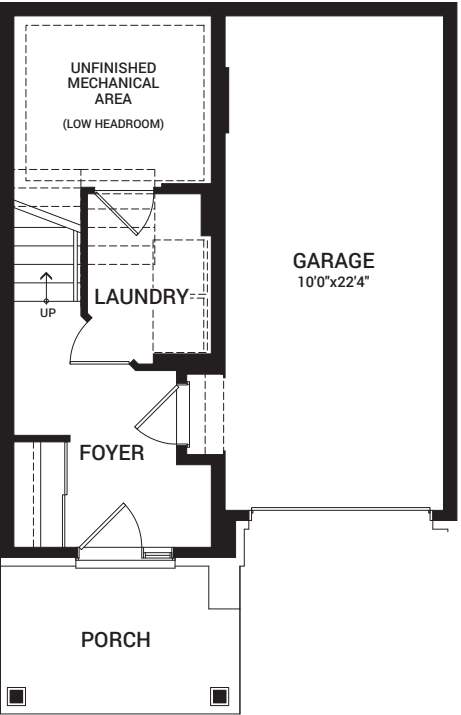


# Abbey

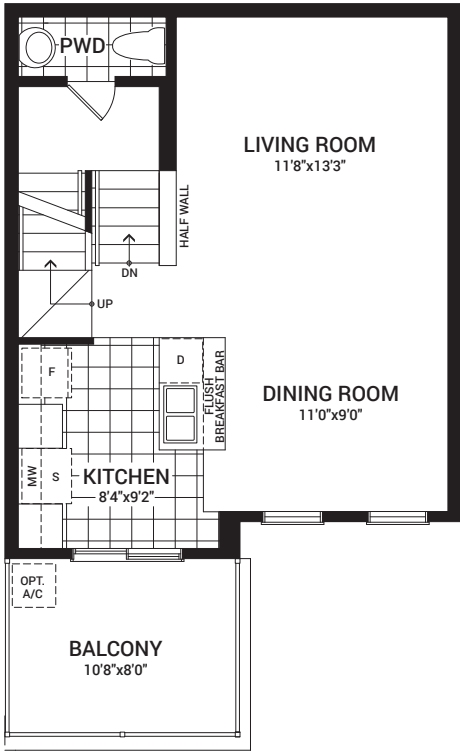
1,154 sq. ft.



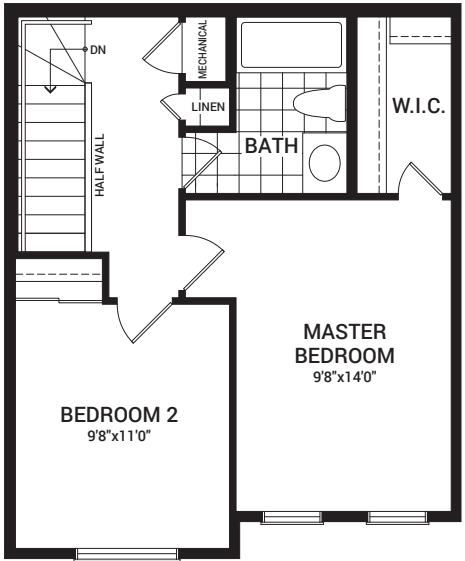
MAIN FLOOR



SECOND FLOOR

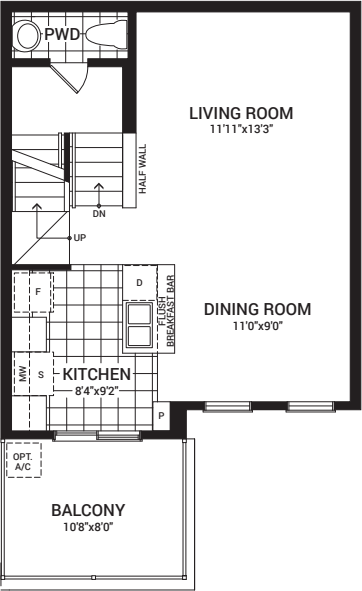


THIRD FLOOR

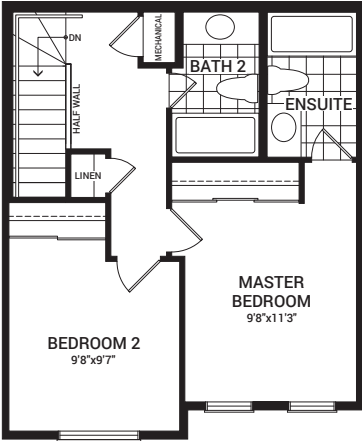


## Flex Plans

OPTIONAL KITCHEN PANTRY



OPTIONAL THIRD FLOOR PLAN WITH ENSUITE



All plans, dimensions, and specifications are subject to change without notice. Actual usable floor space may vary from the stated floor area. Column locations, window locations, and sizes may vary and are subject to change without notice. Renderings are artist's concept only. E.&O.E. June, 2020

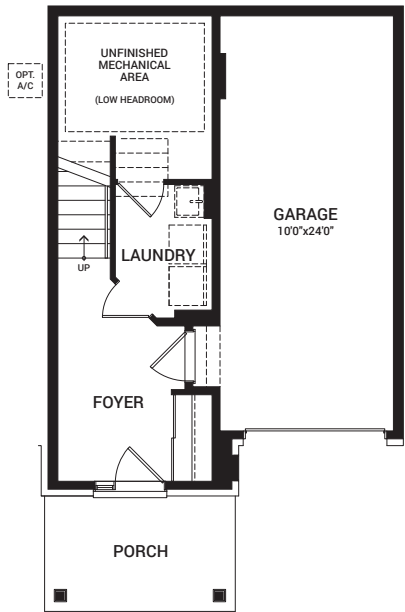


# Broadway

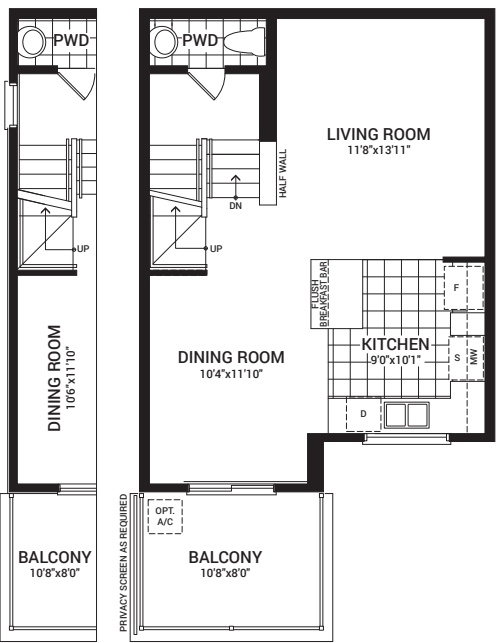
1,268 sq. ft.



MAIN FLOOR



SECOND FLOOR



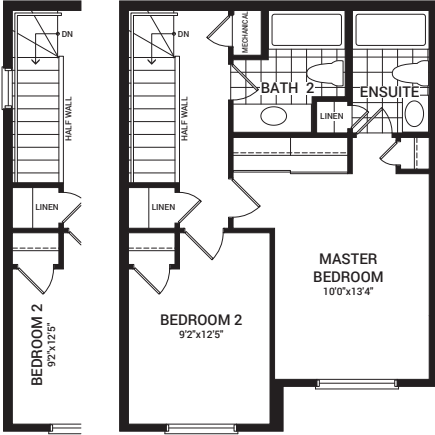
THIRD FLOOR



END UNIT

## Flex Plans

OPTIONAL THIRD FLOOR PLAN WITH ENSUITE



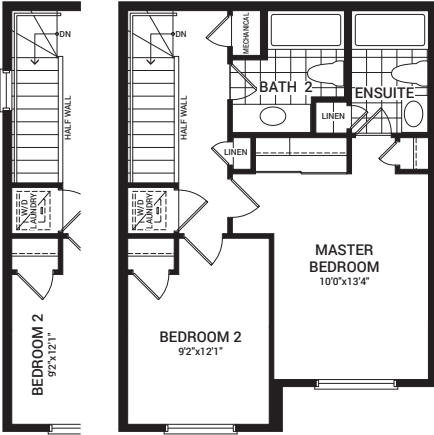
END UNIT

OPTIONAL THIRD FLOOR PLAN WITH LAUNDRY



END UNIT

OPTIONAL THIRD FLOOR PLAN LAYOUT A



END UNIT

All plans, dimensions, and specifications are subject to change without notice. Actual usable floor space may vary from the stated floor area. Column locations, window locations, and sizes may vary and are subject to change without notice. Renderings are artist's concept only. E.&O.E. June, 2020

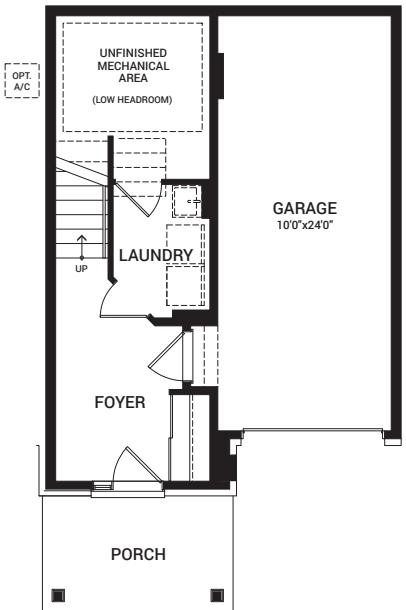


# Canal

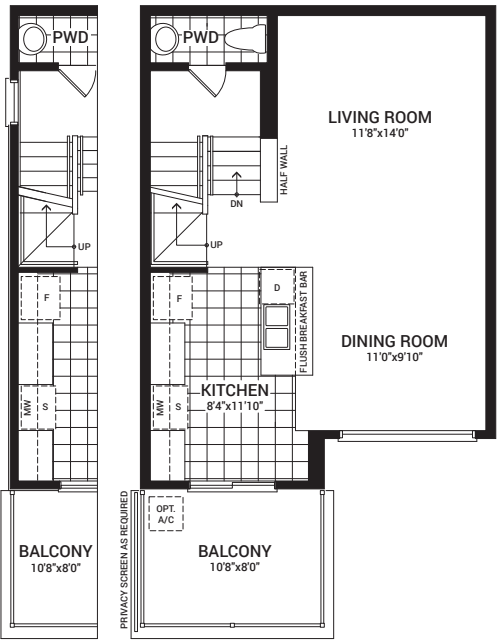
1,268 sq. ft.



MAIN FLOOR



SECOND FLOOR



THIRD FLOOR

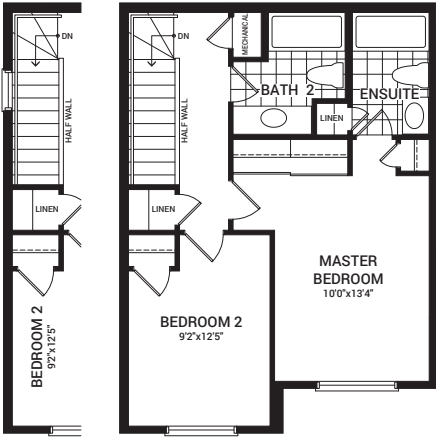


END UNIT

END UNIT

## Flex Plans

OPTIONAL THIRD FLOOR PLAN WITH ENSUITE



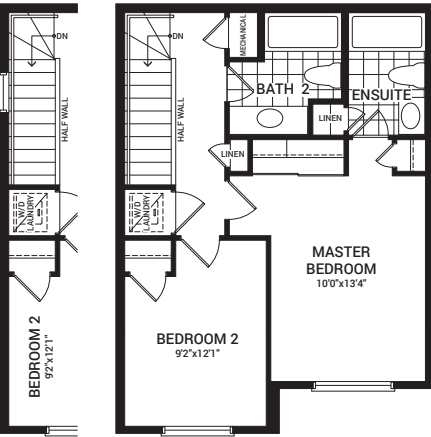
END UNIT

OPTIONAL THIRD FLOOR PLAN WITH LAUNDRY



END UNIT

OPTIONAL THIRD FLOOR PLAN LAYOUT A



END UNIT

All plans, dimensions, and specifications are subject to change without notice. Actual usable floor space may vary from the stated floor area. Column locations, window locations, and sizes may vary and are subject to change without notice. Renderings are artist's concept only. E.&O.E. June, 2020

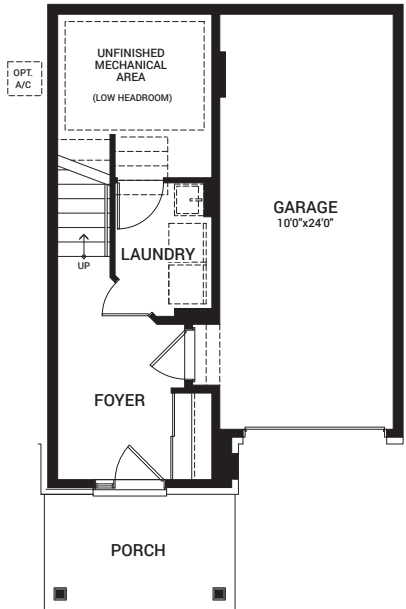


# Downing

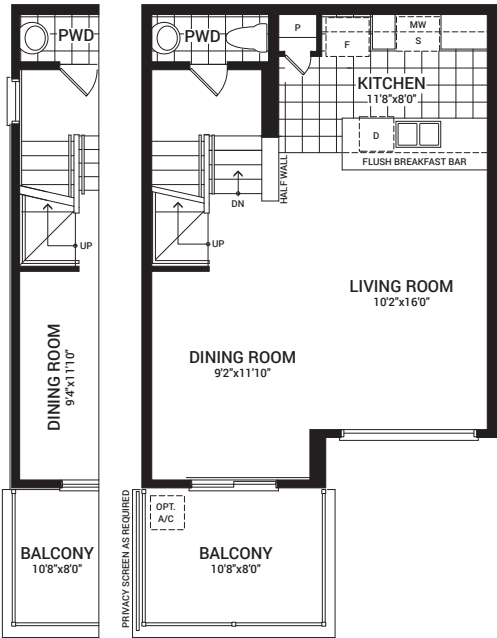
1,268 sq. ft.



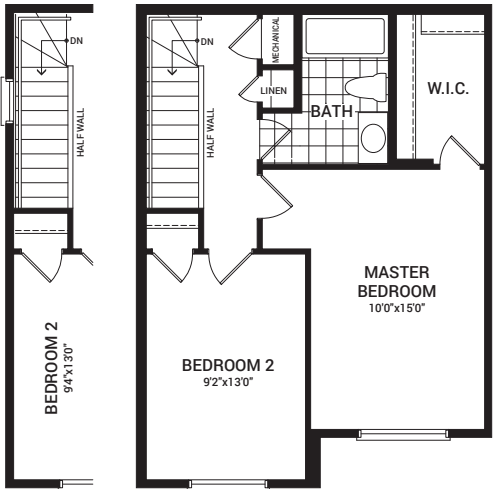
MAIN FLOOR



SECOND FLOOR



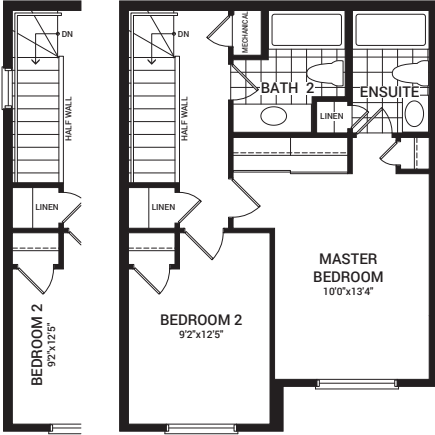
THIRD FLOOR



END UNIT

## Flex Plans

OPTIONAL THIRD FLOOR PLAN WITH ENSUITE



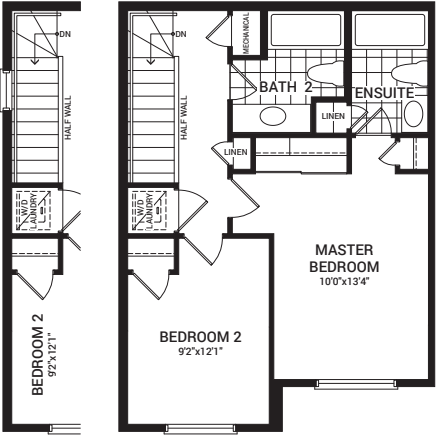
END UNIT

OPTIONAL THIRD FLOOR PLAN WITH LAUNDRY



END UNIT

OPTIONAL THIRD FLOOR PLAN LAYOUT A



END UNIT

All plans, dimensions, and specifications are subject to change without notice. Actual usable floor space may vary from the stated floor area. Column locations, window locations, and sizes may vary and are subject to change without notice. Renderings are artist's concept only. E.&O.E. June, 2020



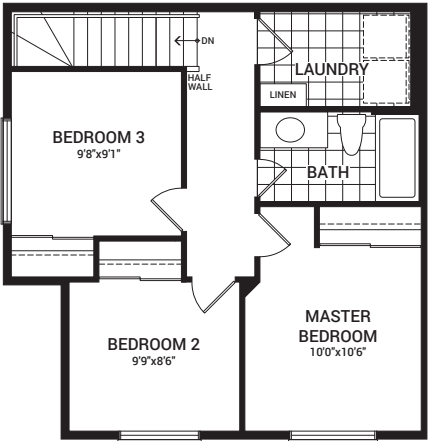
# Madison Corner

1,382 sq. ft.



## Flex Plans

**OPTIONAL THIRD FLOOR LAUNDRY PLAN**  
(SECOND FLOOR LAUNDRY BECOMES STORAGE CLOSET)



**OPTIONAL THIRD FLOOR WITH ENSUITE**



All plans, dimensions, and specifications are subject to change without notice. Actual usable floor space may vary from the stated floor area. Column locations, window locations, and sizes may vary and are subject to change without notice. Renderings are artist's concept only. E.&O.E. June, 2020





## Homes and communities designed for a life well lived

Purchasing a home is one of the most important decisions you'll ever make. We're happy to offer each of our homeowners over 65 years of dedicated and committed building experience so you can make that decision with confidence.

At Minto Communities Ottawa, we're building better places to live, work, and play — one home and one relationship at a time. We have an ongoing investment in the health of this city's residents and the

communities they call home. It's all about the special moments for us. We've built homes across Ottawa for generations, but what we're most proud of is the connections we've made with our homeowners and sharing the excitement of handing over a new set of keys.

We are part of Minto Group, a home builder, developer, property and investment manager for over 65 years that began here in Ottawa and has since grown to Toronto and the GTA, London, Calgary, Edmonton, and Florida, USA.

CALGARY | EDMONTON | FLORIDA | TORONTO & GTA | LONDON | OTTAWA

Our homes are designed and built for the way you live, where life's necessities are close at hand — often just a walk away.

Proud supporters of the Children's Hospital of Eastern Ontario (CHEO)







Minutes away by car from Morgan’s Creek

Downtown	29 minutes
Tanger Outlets	13 minutes
Canadian Tire Centre	12 minutes
Kanata Centrum	9 minutes

Legend

SHOPPING CENTRES

- Kanata Centrum Shopping Centre**  
3 Brewers  
Boston Pizza  
Chapters  
Landmark Cinemas  
Loblaws  
Milestones  
Moxies  
PetSmart  
Walmart Supercentre  
And More...
- Tanger Outlets**  
Banana Republic Factory  
Calvin Klein Outlet  
Coach Ottawa  
Fossil  
Lucky Brand Jeans  
Michael Kors Outlet  
Nike Factory Store  
Trade Secrets  
And More...
- Klondike Crossing**  
Shoppers Drug Mart  
Willy’s Pizza  
TD Canada Trust  
And More...
- RioCentre**  
LCBO  
National Bank  
Sobeys  
Shawarma House  
Starbucks  
Rexall Drugstore  
And More...
- Kanata Mews Plaza**  
Royal Oak  
Luna Crepes & Cafe  
Trillium Floral Designs  
Home Hardware  
Subway  
And More...
- Gateway Plaza**  
Tim Hortons  
Lone Star Texas Grill  
Metro  
HSBC Bank  
RBC Royal Bank  
And More...

SERVICES

- Scotiabank
- Marchwood Dental
- Shell
- Ultramar
- Shirin Market
- Brookstreet Hotel

- Ottawa Police Service
- Fire Staton 42
- Beaverbrook Public Library
- March Rd Veterinary Hospital

SPORTS & RECREATION

- The Marshes Golf Club
- Loch March Golf & Country Club
- GoodLife Fitness Kanata March and Terry Fox
- Richcraft Recreation Complex

CULTURE & ENTERTAINMENT

- Canadian Tire Centre

DINING

- McDonald’s
- Tim Hortons
- Cora’s
- Big Rig Brewery
- A&W Canada
- The Barley Mow
- Burger King
- Pizza Hut
- Starbucks
- Blossoming Cakes

RELIGIOUS

- St John’s Kanata Anglican Church
- Kanata United Church

SCHOOLS

- Ottawa Catholic School Board**
- St. Isabel Catholic Elementary School
  - Elementary School Catholic Saint-Rémi

**Eastern Ontario French Public School Board**

- École élémentaire publique Julie-Payette

**Ottawa Carleton District School Board**

- Jack Donohue Public School
- South March Public School
- Kanata Highlands Public School
- Earl of March Secondary School
- W. Erskine Johnston Public School
- Stephen Leacock Public School

**Private School**

- The Greenwoods Academy
- March Academy

TRANSIT

- OC Transpo - Innovation Park & Ride
- OC Transpo - Eagleson Park & Ride
- OC Transpo - Terry Fox Park & Ride
- ★ Minto Kanata Sales Centre



Thank you for visiting.

**MORGAN'S  
CREEK**





OTTAWA  
BUILDER  
OF THE YEAR  
**2019**

**MORGAN'S  
CREEK**

380 Huntmar Drive, Kanata, ON K2S 1B9  
613.788.2770 | [MintoMorgansCreek@minto.com](mailto:MintoMorgansCreek@minto.com) | [mintomorganscreek.com](http://mintomorganscreek.com)



E.&O.E. June 2020