

BAY COLLECTION

WESTLAKE™

THREE UNIQUE ARCHITECTURAL STYLES

The Bay Collection at The Crossings features three different architectural styles creating a unique street scape. Choose from Coastal Contemporary, Modern Bermuda and Urban Transitional.



BAY COLLECTION

AVENTURA

3 Bedrooms / 2.5 Baths / 2-Car Garage



4 UNIT • COASTAL CONTEMPORARY



4 UNIT • MODERN BERMUDA



4 UNIT • URBAN TRANSITIONAL



5 UNIT • COASTAL CONTEMPORARY



5 UNIT • MODERN BERMUDA



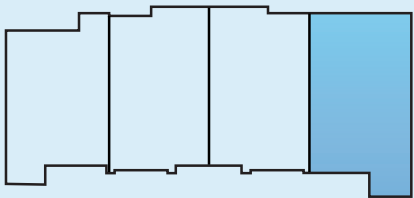
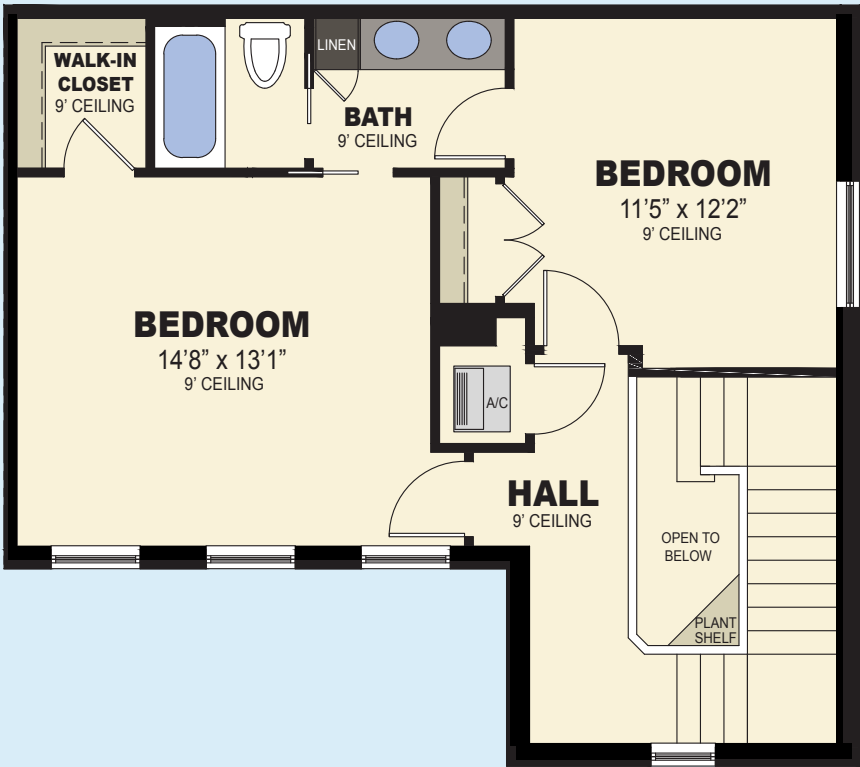
5 UNIT • URBAN TRANSITIONAL

WESTLAKE™

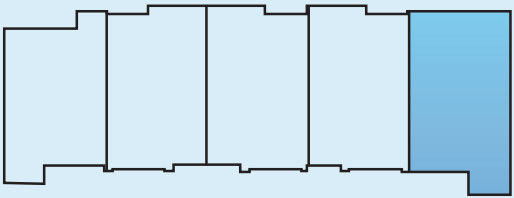
BAY COLLECTION

AVENTURA

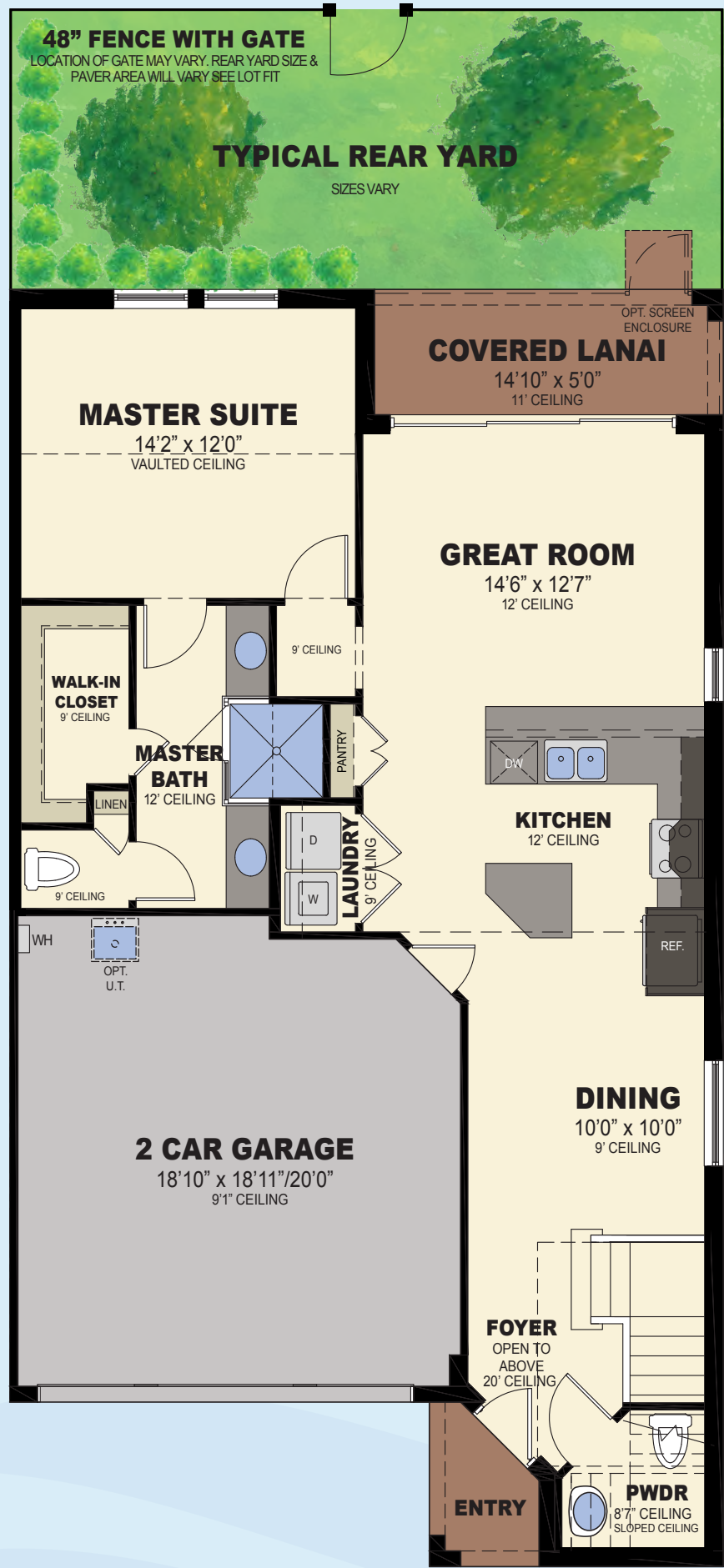
3 Bedrooms / 2.5 Baths / 2-Car Garage



4 UNIT BUILDING



5 UNIT BUILDING



FIRST FLOOR	1,032 S.F.
SECOND FLOOR	637 S.F.
<hr/>	
TOTAL LIVING AREA	1,669 S.F.
<hr/>	
2-CAR GARAGE	385 S.F.
COVERED ENTRY	27 S.F.
COVERED LANAI	79 S.F.
<hr/>	
TOTAL	2,160 S.F.

BAY COLLECTION

BRICKELL

4 Bedrooms / 3.5 Baths / 2-Car Garage



4 UNIT • COASTAL CONTEMPORARY



4 UNIT • MODERN BERMUDA



4 UNIT • URBAN TRANSITIONAL



5 UNIT • COASTAL CONTEMPORARY



5 UNIT • MODERN BERMUDA



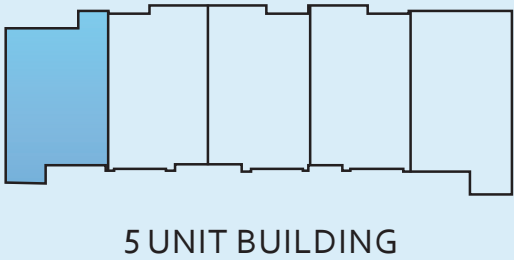
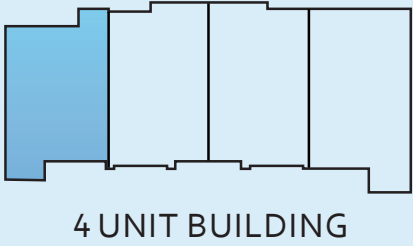
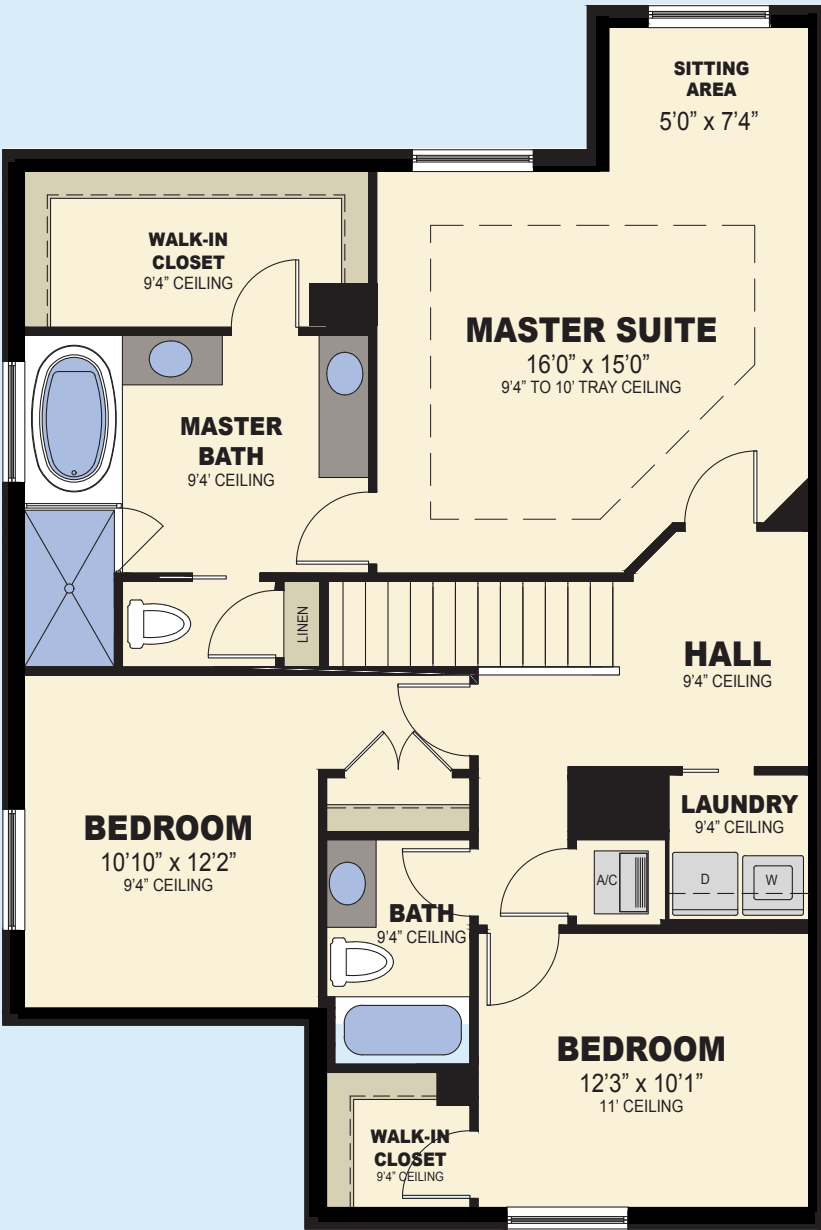
5 UNIT • URBAN TRANSITIONAL

WESTLAKE™

BAY COLLECTION

BRICKELL

4 Bedrooms / 3.5 Baths / 2-Car Garage



FIRST FLOOR	838 S.F.
SECOND FLOOR	1,140 S.F.
<hr/>	
TOTAL LIVING AREA	1978 S.F.
<hr/>	
2- CAR GARAGE	385 S.F.
COVERED ENTRY	23 S.F.
COVERED LANAI	81 S.F.
<hr/>	
TOTAL	2,467 S.F.

BAY COLLECTION

BISCAYNE

3 Bedrooms / 2.5 Baths / 2-Car Garage



4 UNIT • COASTAL CONTEMPORARY



4 UNIT • MODERN BERMUDA



4 UNIT • URBAN TRANSITIONAL



5 UNIT • COASTAL CONTEMPORARY



5 UNIT • MODERN BERMUDA



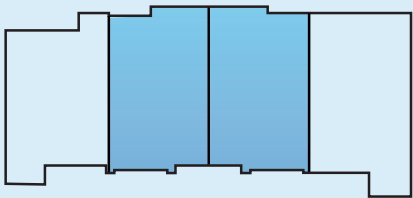
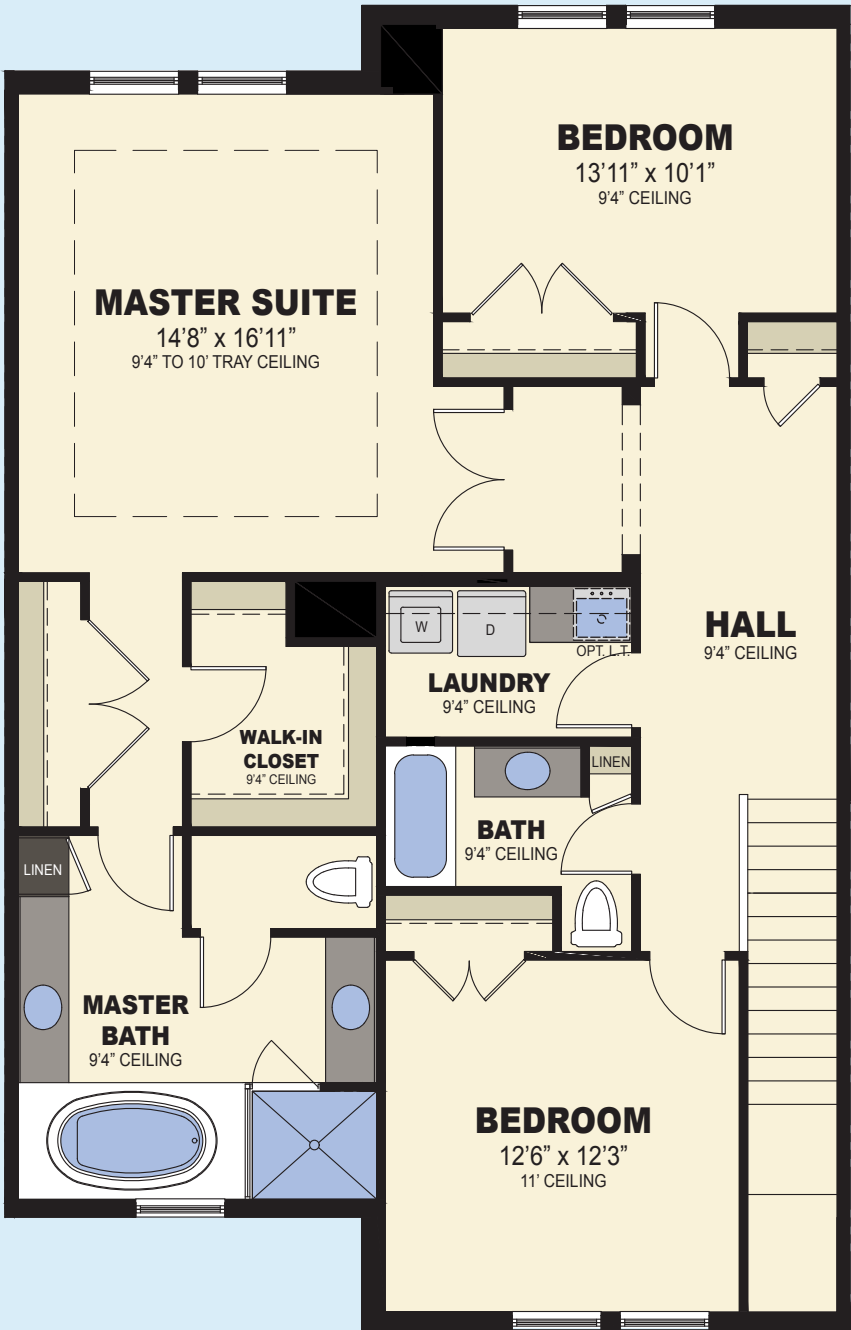
5 UNIT • URBAN TRANSITIONAL

WESTLAKE™

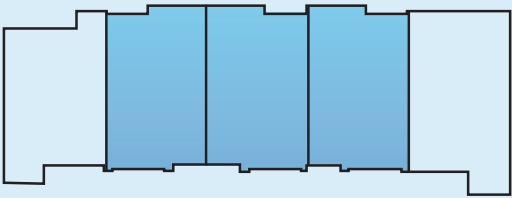
BAY COLLECTION

BISCAYNE

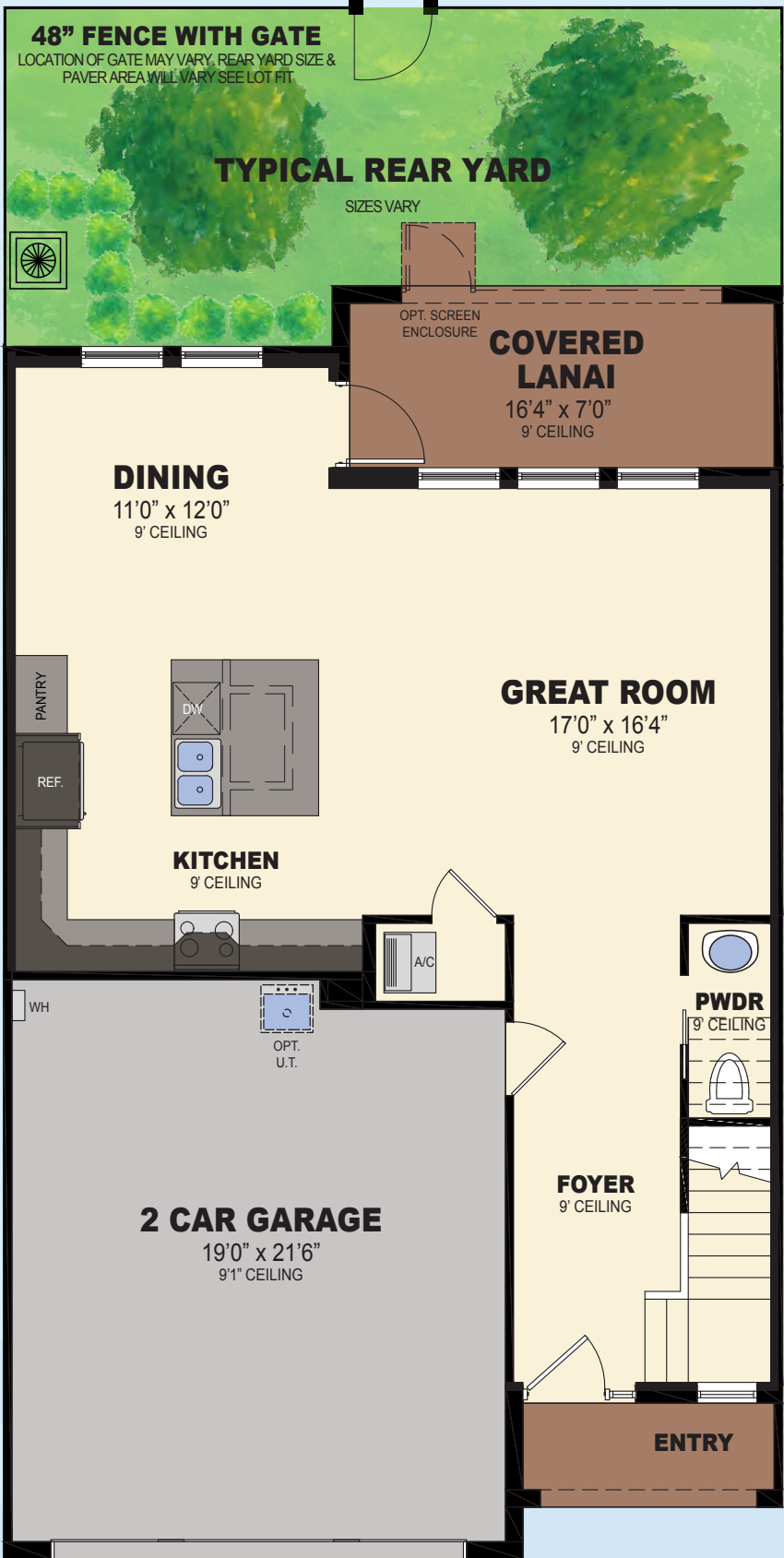
3 Bedrooms / 2.5 Baths / 2-Car Garage



4 UNIT BUILDING



5 UNIT BUILDING



FIRST FLOOR	839 S.F.
SECOND FLOOR	1,274 S.F.
<hr/>	
TOTAL LIVING AREA	2,113 S.F.
<hr/>	
2-CAR GARAGE	424 S.F.
COVERED ENTRY	40 S.F.
COVERED LANAI	118 S.F.
<hr/>	
TOTAL	2,695 S.F.



WESTLAKE™



© Minto Communities, LLC 2022. All rights reserved. Content may not be reproduced, copied, altered, distributed, stored or transferred in any form or by any means without express written permission. Artist's renderings, dimensions, specifications, prices and features are approximate and subject to change without notice. Minto, the Minto logo, Westlake and the Westlake logo are trademarks of Minto Communities, LLC and/or its affiliates. CGC 1519880. 4/2023



(561) 660-9839

16610 Town Center Parkway North, City of Westlake, FL 33470
Located on Seminole Pratt Whitney Rd. between Southern Blvd. and Northlake Blvd.

LEARN MORE AT
WestlakeFL.com