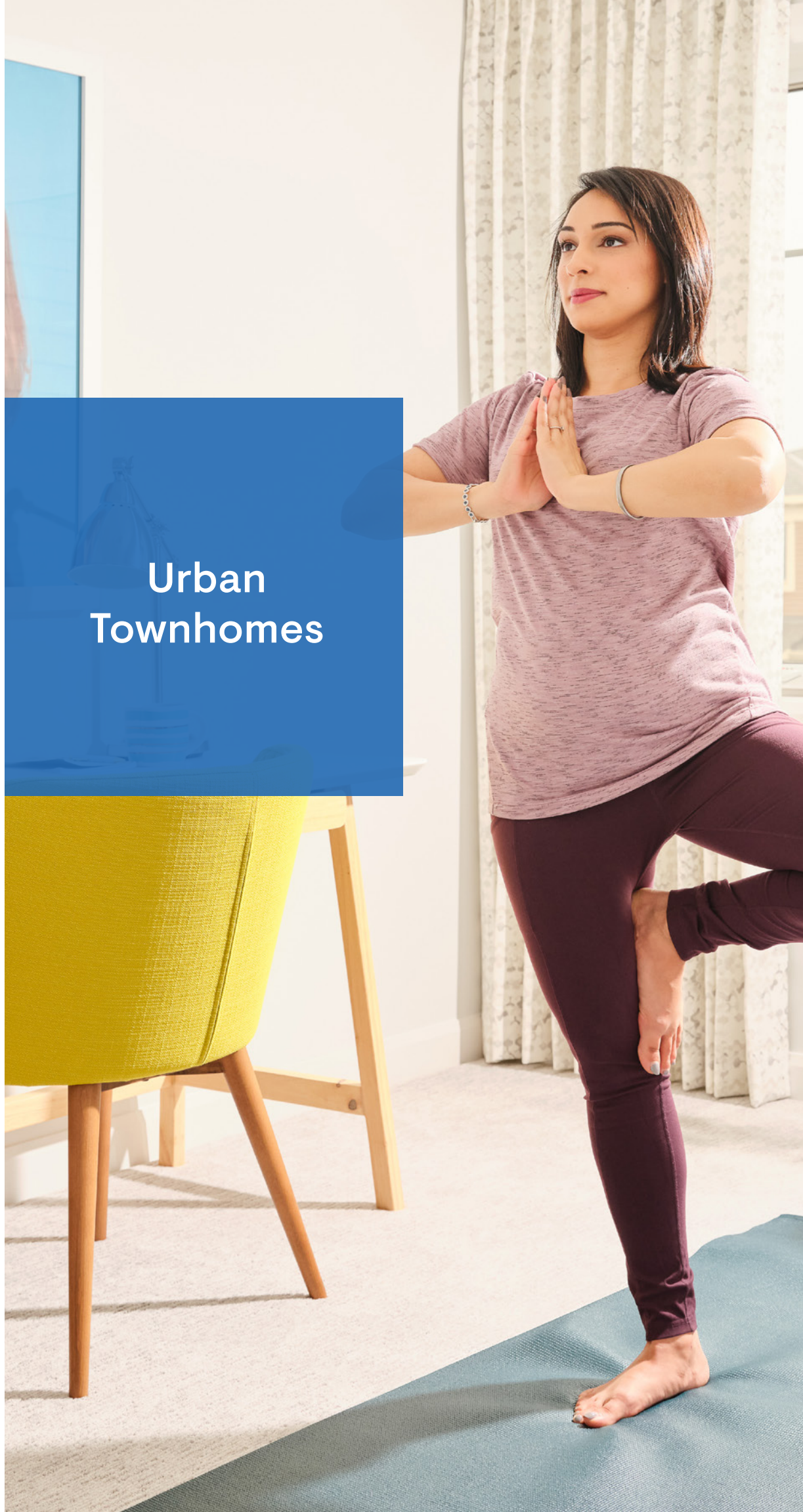




Urban Townhomes





Urban Townhomes

Discover maximum style with minimal upkeep. Enjoy three storeys of comfortable living, a walk-in-closet in the primary bedroom and a double-car garage.



Contemporary styles

Our stylish Urban Townhomes are expertly crafted with a generous balcony and 9' ceilings on the second floor, large windows for plenty of natural light and 3 spacious bedrooms.

From frame to finishes — have it all.

Live without compromise in your new home. Choose from our collection of low-maintenance Urban Townhomes, superbly crafted with open, connected space for joyful gatherings and elegant exteriors with stone and brick for beautiful curb appeal.

Larger windows
for brighter rooms

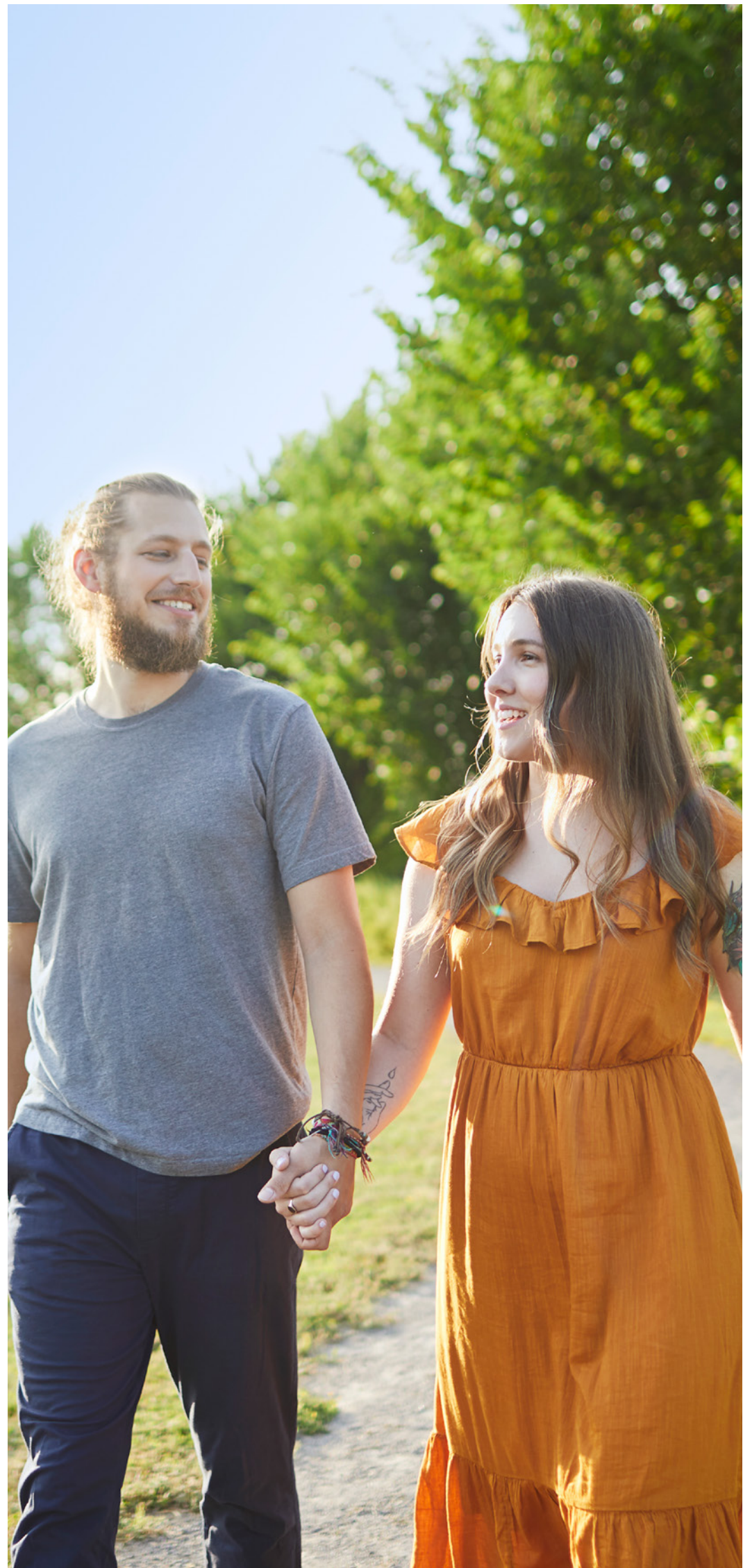
Convenient,
contemporary living

Designed with your
well-being in mind



Live smarter

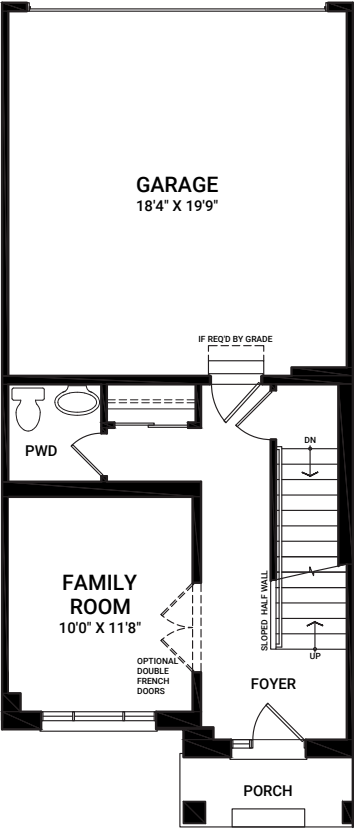
Track and control the comfort and performance of your home from a single, intuitive mobile app – whenever you want, wherever you are.



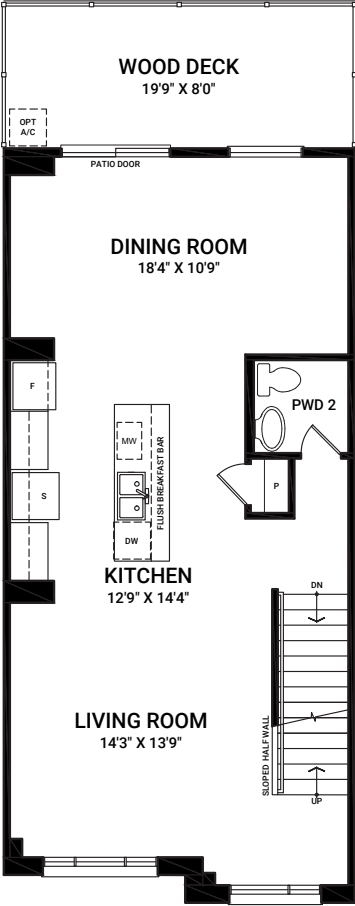
Bayview

1,906 sq. ft.

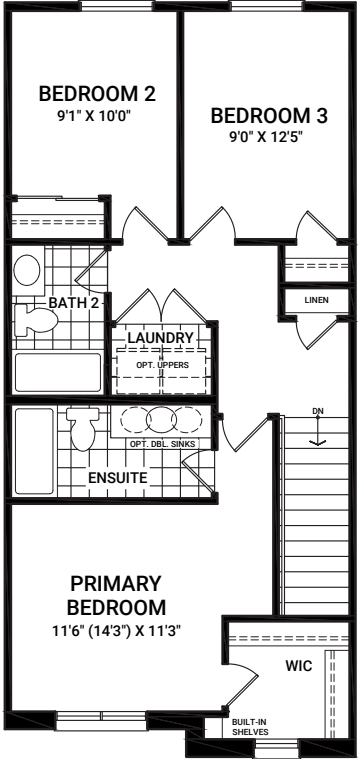
FIRST FLOOR



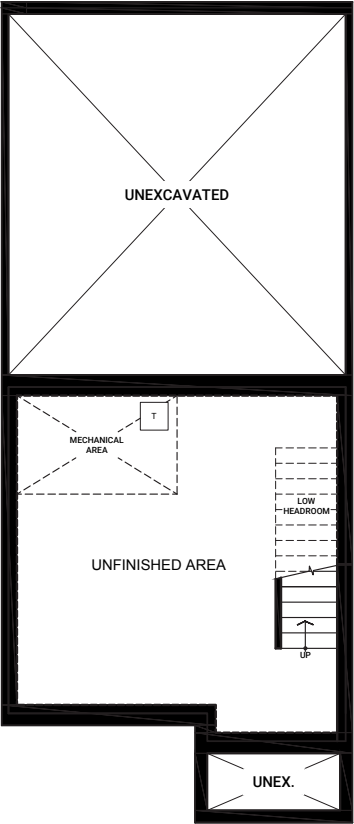
SECOND FLOOR



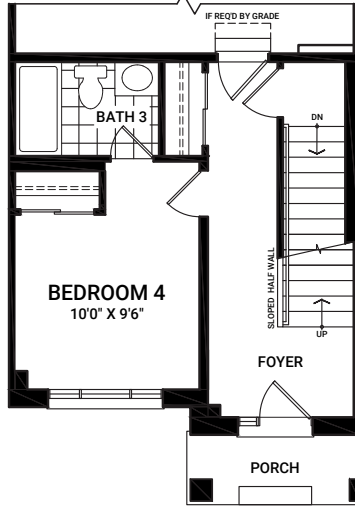
THIRD FLOOR



BASEMENT



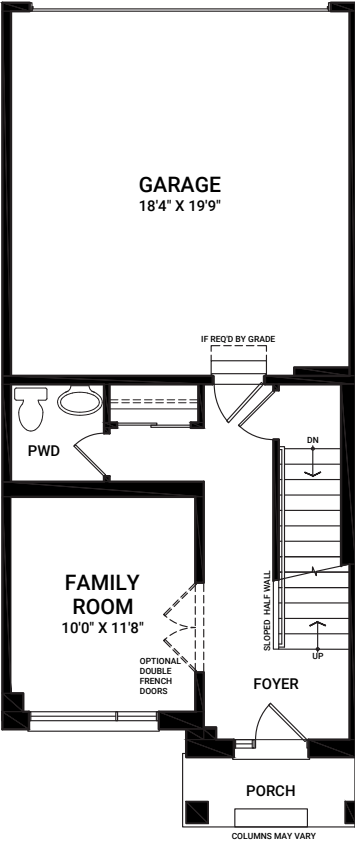
OPTIONAL FIRST FLOOR LAYOUT A



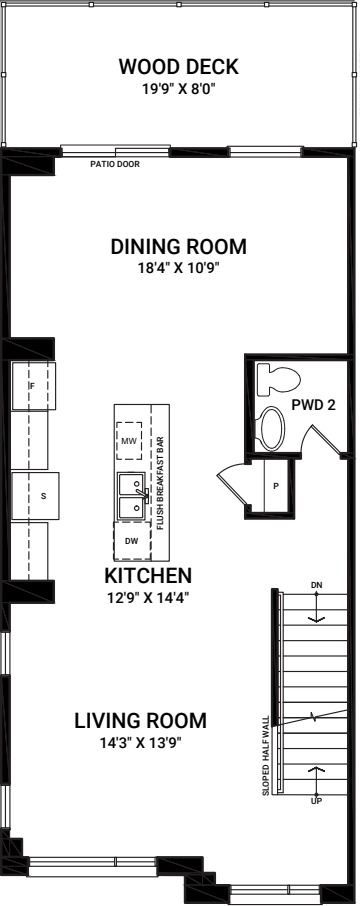
Bayview End

1,919 sq. ft.

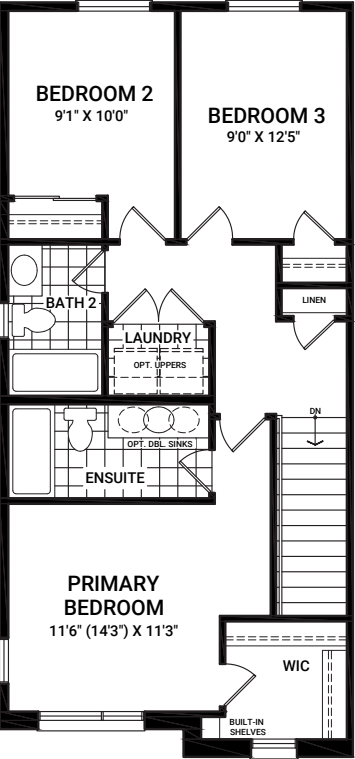
FIRST FLOOR



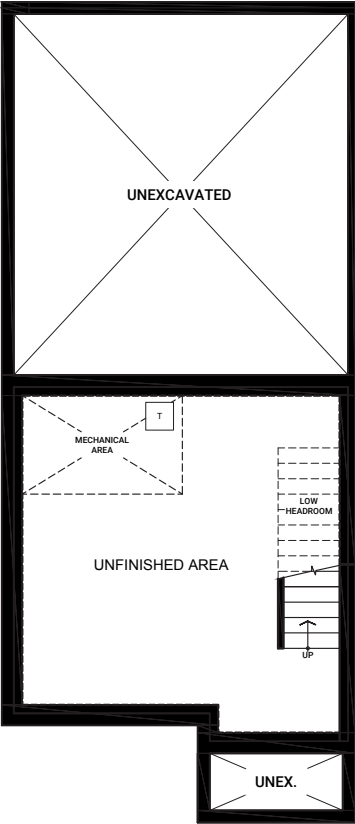
SECOND FLOOR



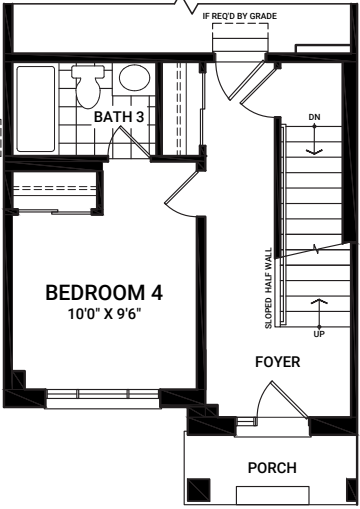
THIRD FLOOR



BASEMENT



OPTIONAL FIRST FLOOR LAYOUT A



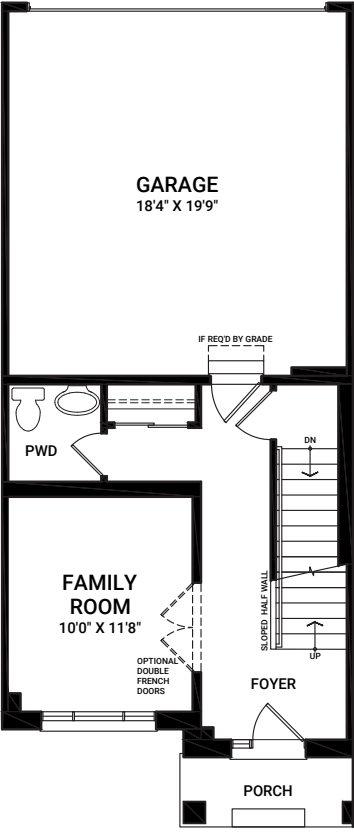
All plans, dimensions, and specifications are subject to change without notice. Actual usable floor space may vary from the stated floor area. Column locations, window locations, and sizes may vary and are subject to change without notice. Renderings are artist's concept only. E.&O.E. June 2023

All plans, dimensions, and specifications are subject to change without notice. Actual usable floor space may vary from the stated floor area. Column locations, window locations, and sizes may vary and are subject to change without notice. Renderings are artist's concept only. E.&O.E. June 2023

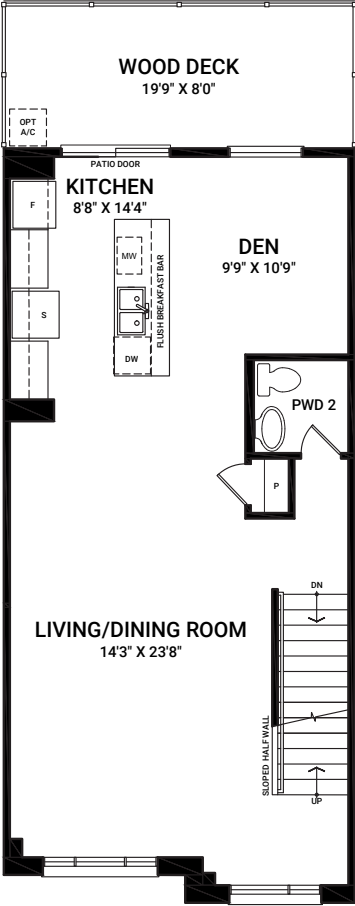
Granville

1,906 sq. ft.

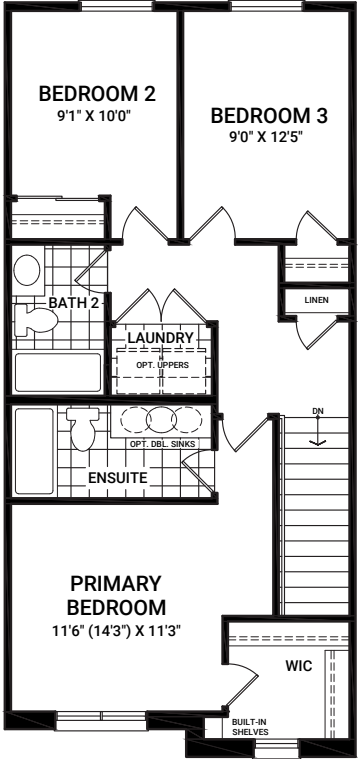
FIRST FLOOR



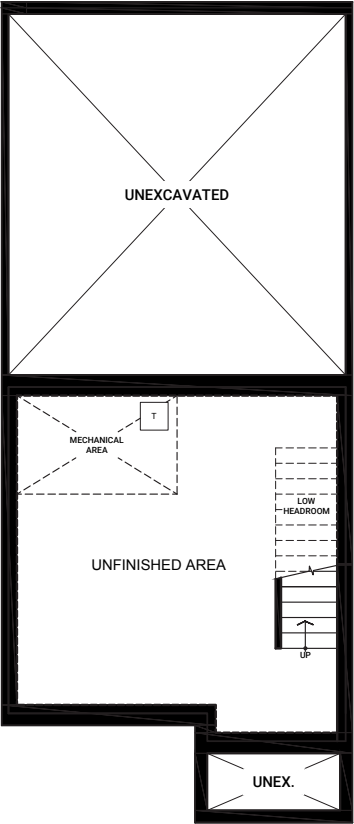
SECOND FLOOR



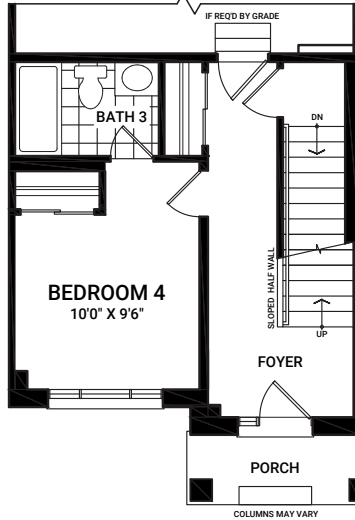
THIRD FLOOR



BASEMENT



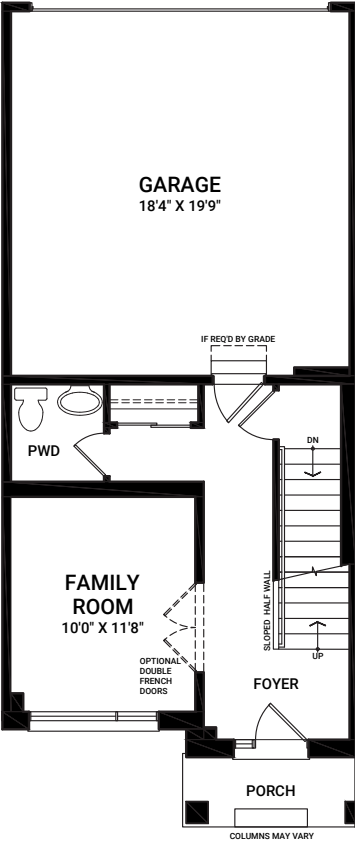
OPTIONAL FIRST FLOOR LAYOUT A



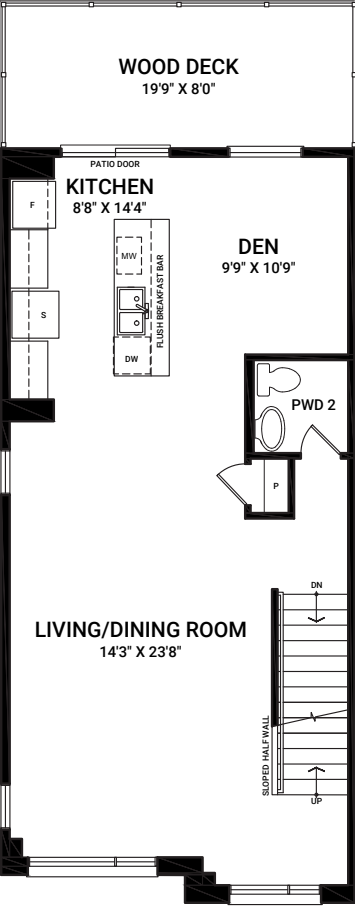
Granville End

1,919 sq. ft.

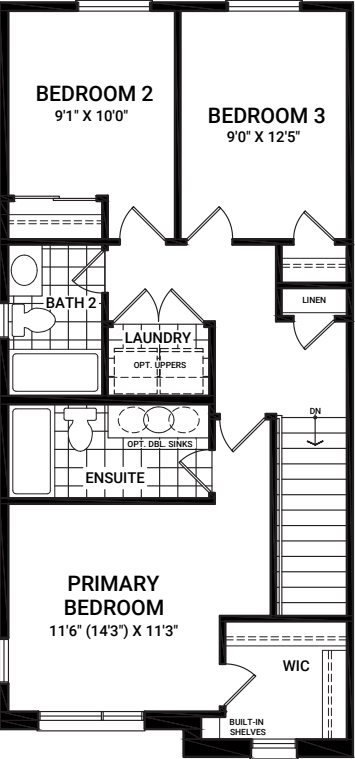
FIRST FLOOR



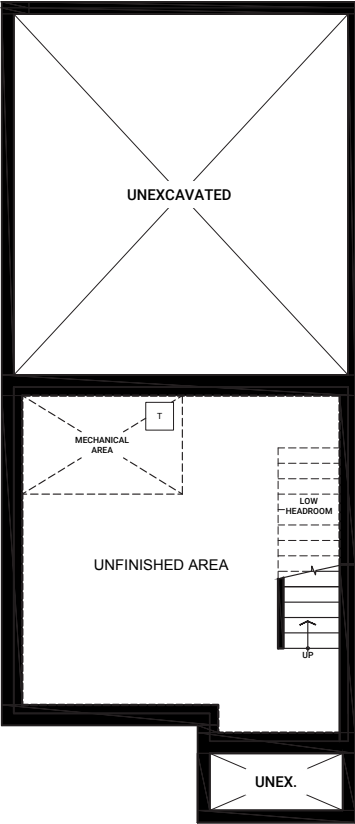
SECOND FLOOR



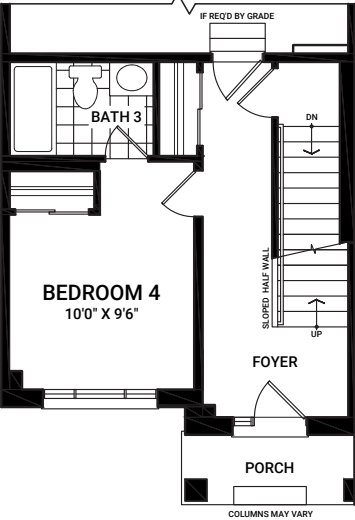
THIRD FLOOR



BASEMENT



OPTIONAL FIRST FLOOR LAYOUT A



All plans, dimensions, and specifications are subject to change without notice. Actual usable floor space may vary from the stated floor area. Column locations, window locations, and sizes may vary and are subject to change without notice. Renderings are artist's concept only. E.&O.E. June 2023

All plans, dimensions, and specifications are subject to change without notice. Actual usable floor space may vary from the stated floor area. Column locations, window locations, and sizes may vary and are subject to change without notice. Renderings are artist's concept only. E.&O.E. June 2023

