



ARCADIA
KANATA

36'
Single Family Homes



In the hub of Kanata's
entertainment district is
a thriving community that
redefines suburban living.

Arcadia, Kanata

Closer to nature yet surrounded by all that
Kanata has to offer – Arcadia is a lively
community of beautiful contemporary homes.



Nurture a healthy,
active lifestyle with
parks and green spaces



Relax in an environment
carefully designed with your
well-being in mind



Feel energized in
brightly lit open-concept
living spaces



Breathe easier
with the latest
fresh air systems



Enjoy the calming
benefits of living near
the water



Live comfortably thanks to
the latest in construction
technologies



Build lasting community
connections with
neighbours



Embrace personal
comfort with Smarter
Home technology

Arcadia's heart beats

A master-planned community where family-friendly streets reveal beautifully designed homes, bursting with curb appeal. The centrally located park with a basketball court and open field turns into a community skating rink in the winter time – more than just a place to gather, it's the heart of Arcadia.



Live well

Arcadia is located within easy access of the city and embraces the area's natural features. The Carp River runs serenely by the edge of the community where welcoming birdsong and the gentle water makes for a relaxing escape.



Design it your way

With the help of our dedicated Design Centre Team, turn your interior design dreams into a reality with carefully selected fixtures, finishes, and a variety of framing options.



The Killarney

From frame to finishes

Your new open-concept home has been expertly crafted from foundation to the final touches, adhering to the latest in sustainable building practices.



The Fitzroy

Unique designs for every taste

Choose from a wealth of home designs in Arcadia. There is an expertly crafted option for the new or growing family, the first-time home buyer, the downsizer, and everyone in between. The finest contemporary fixtures come together with exceptional finishes to create luxurious living inside and out.

Open plan spaces with an inviting flow from room to room

9 foot ceiling on main floor

Larger windows for brighter rooms



All roads lead to Kanata

Perfectly situated in the hub of Kanata's shopping and entertainment districts, plus easy access to highway 417, you're right in the heart of the action-packed neighbourhood. With brand name retailers at Tanger Outlets and the Canadian Tire Centre just minutes away, it's live entertainment or retail therapy — you choose!



discover

balance

With the Ottawa River, South March Highlands, and countless walking paths and nature trails to the north, Kanata has been waiting for an outdoors fan like you.





36' Collection

Three and four bedroom Single Family Homes on 36' wide lots have been meticulously designed to maximize space and style with open-concept layouts to suit your growing family.

ARCADIA
KANATA

Bronte

2,092 sq. ft.



A

2,092 sq. ft.



C

2,106 sq. ft.

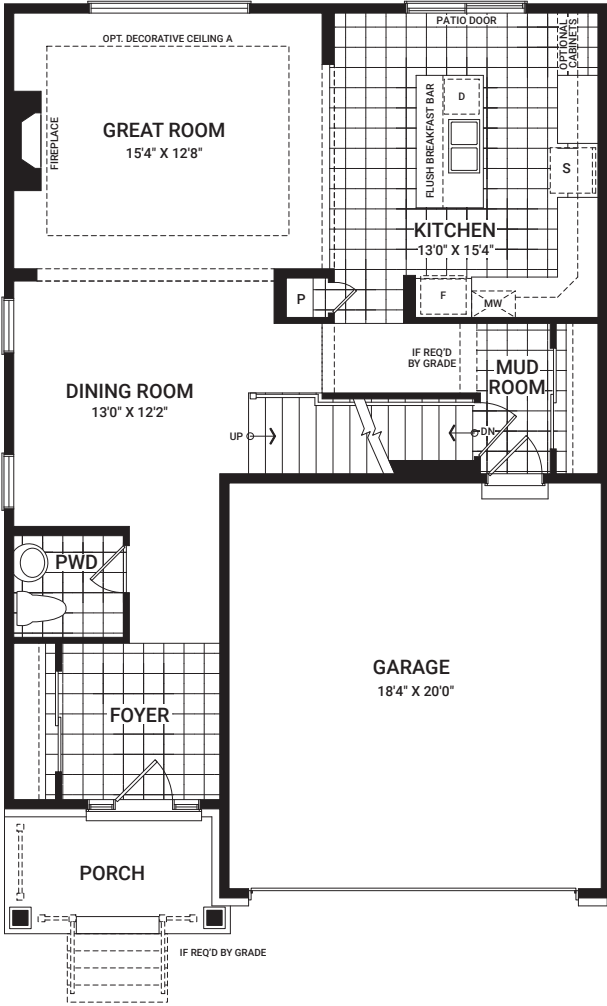


D

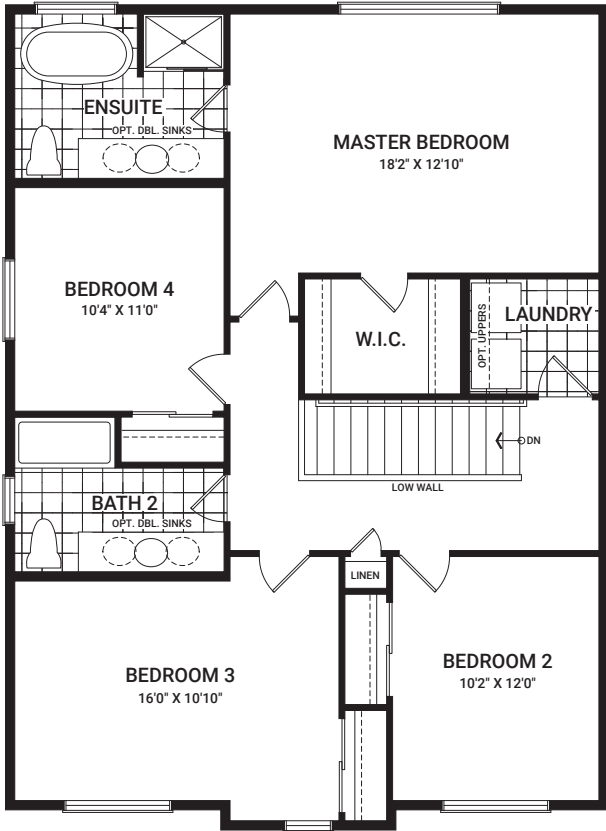
2,106 sq. ft.

Floorplan – Elevation A

MAIN FLOOR

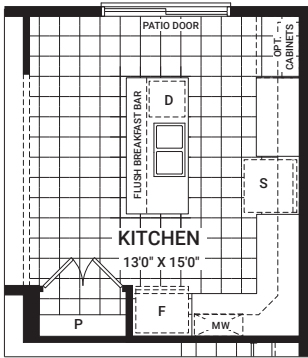


SECOND FLOOR

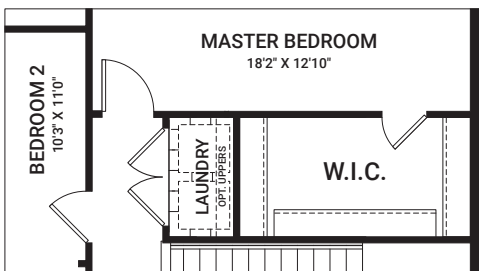


Flex Plans

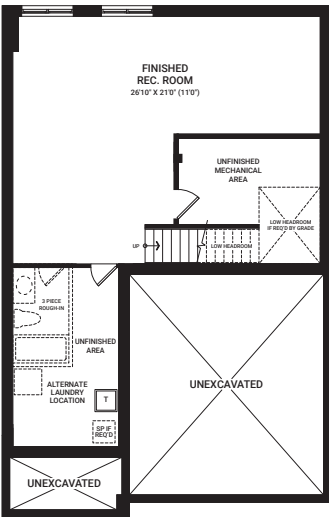
OPTIONAL KITCHEN LAYOUT A



OPTIONAL SECOND FLOOR LAYOUT A



OPTIONAL FINISHED BASEMENT REC. ROOM



All plans, dimensions, and specifications are subject to change without notice. Actual usable floor space may vary from the stated floor area. Column locations, window locations, and sizes may vary and are subject to change without notice. Renderings are artist's concept only. E.&O.E. July, 2020

*Ask our Sales Agents about other options for this home.

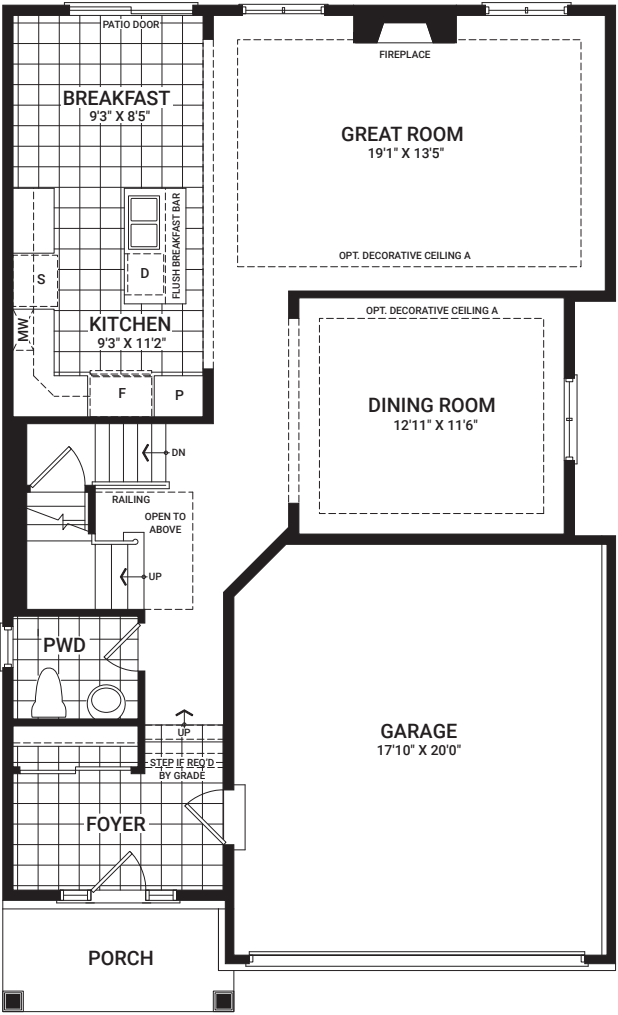
Clairmont

2,171 sq. ft.

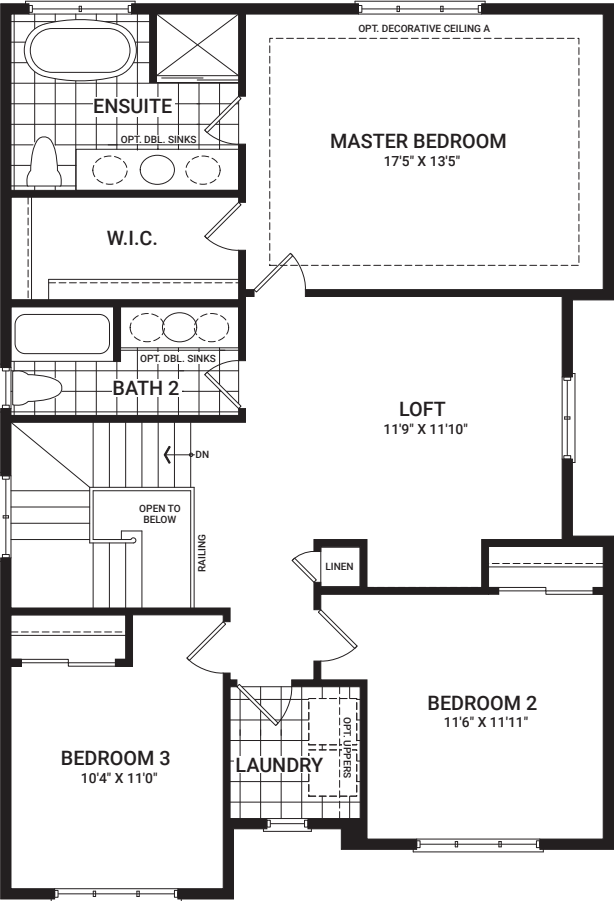


Floorplan – Elevation A

MAIN FLOOR

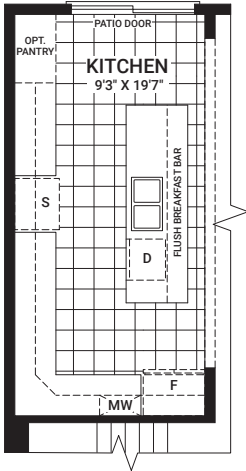


SECOND FLOOR

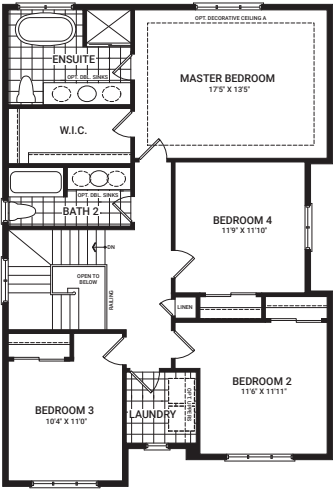


Flex Plans

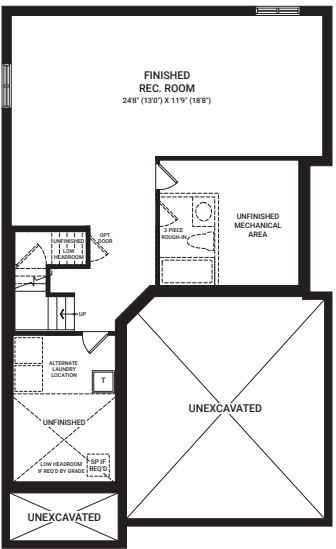
OPTIONAL KITCHEN LAYOUT A



OPTIONAL 4 BEDROOM SECOND FLOOR



OPTIONAL FINISHED BASEMENT REC. ROOM



All plans, dimensions, and specifications are subject to change without notice. Actual usable floor space may vary from the stated floor area. Column locations, window locations, and sizes may vary and are subject to change without notice. Renderings are artist's concept only. E.&O.E. July, 2020

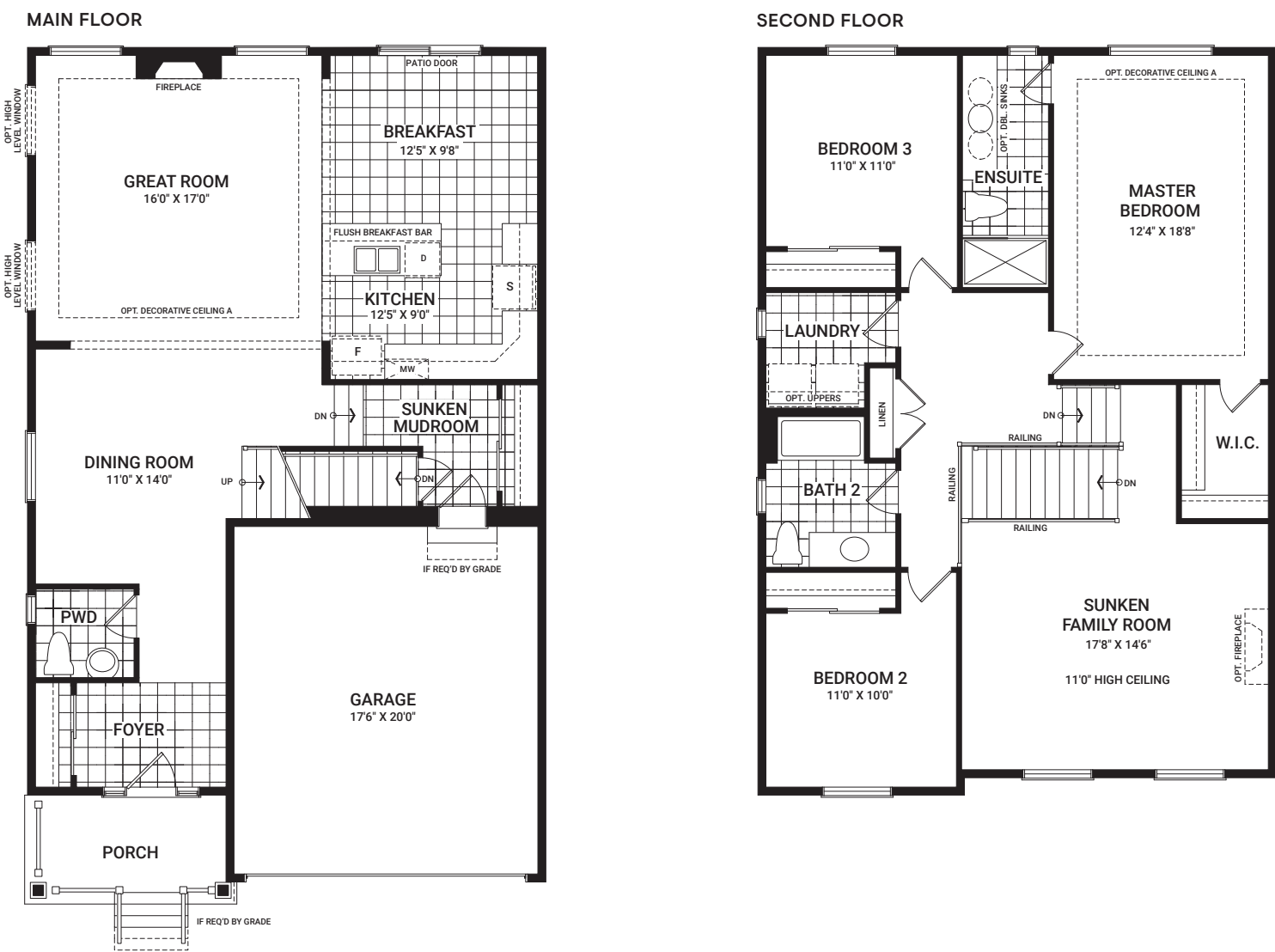
*Ask our Sales Agents about other options for this home.

Fairbank

2,275 sq. ft.

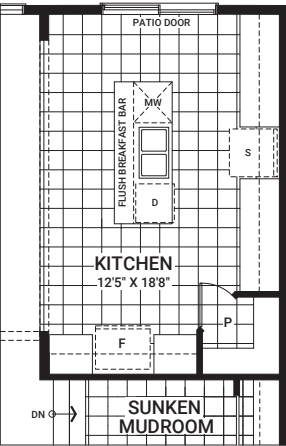


Floorplan – Elevation A

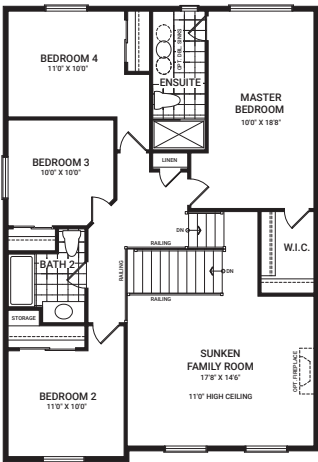


Flex Plans

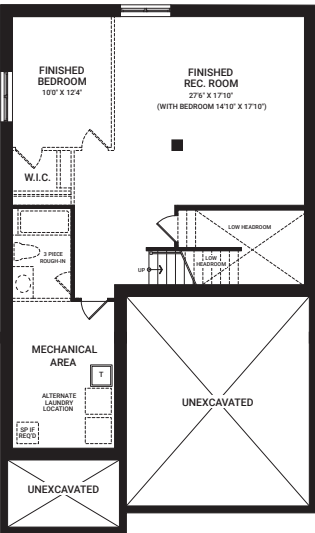
OPTIONAL KITCHEN LAYOUT A



OPTIONAL 4 BEDROOM SECOND FLOOR



OPTIONAL FINISHED BASEMENT REC. ROOM

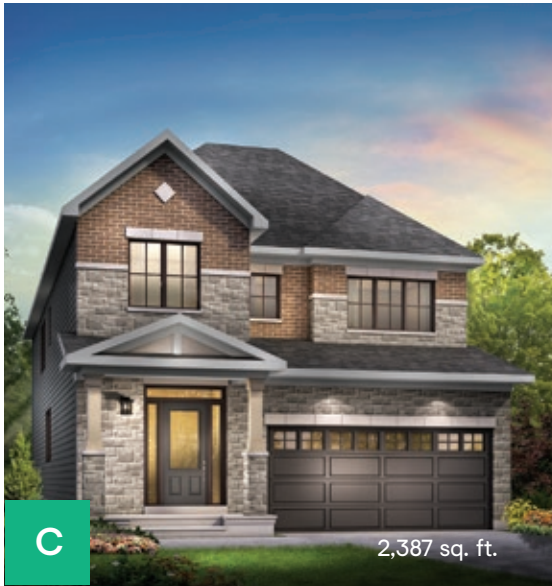
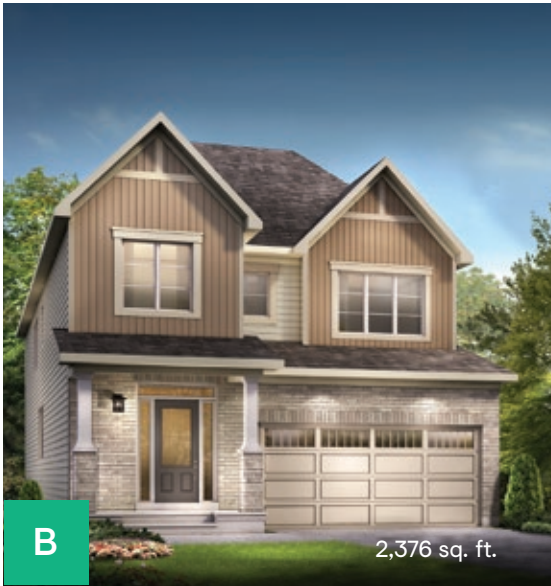


All plans, dimensions, and specifications are subject to change without notice. Actual usable floor space may vary from the stated floor area. Column locations, window locations, and sizes may vary and are subject to change without notice. Renderings are artist's concept only. E.&O.E. July, 2020

*Ask our Sales Agents about other options for this home.

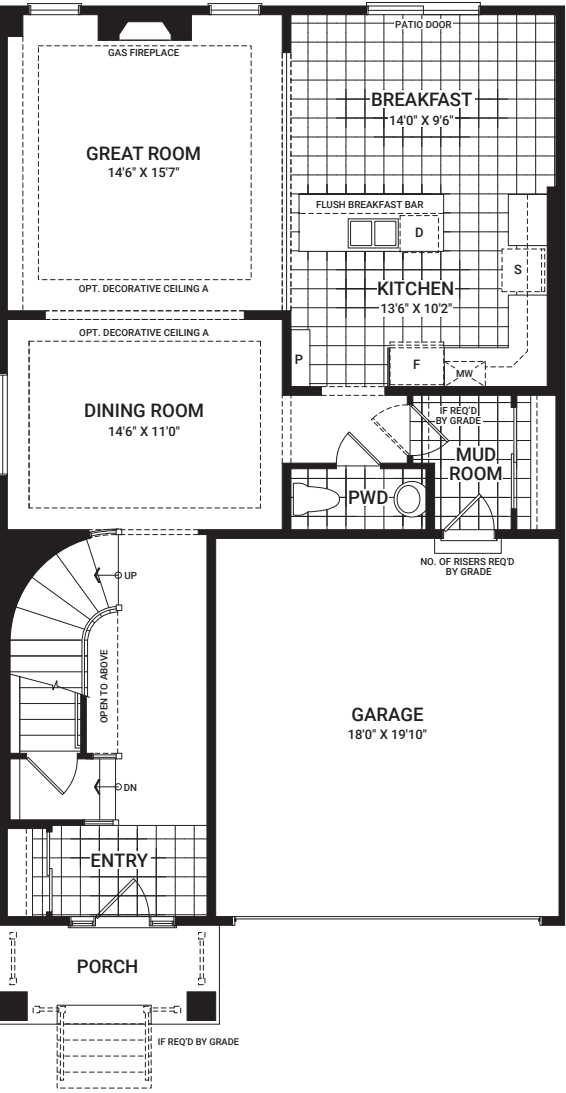
Fitzroy

2,368 sq. ft.

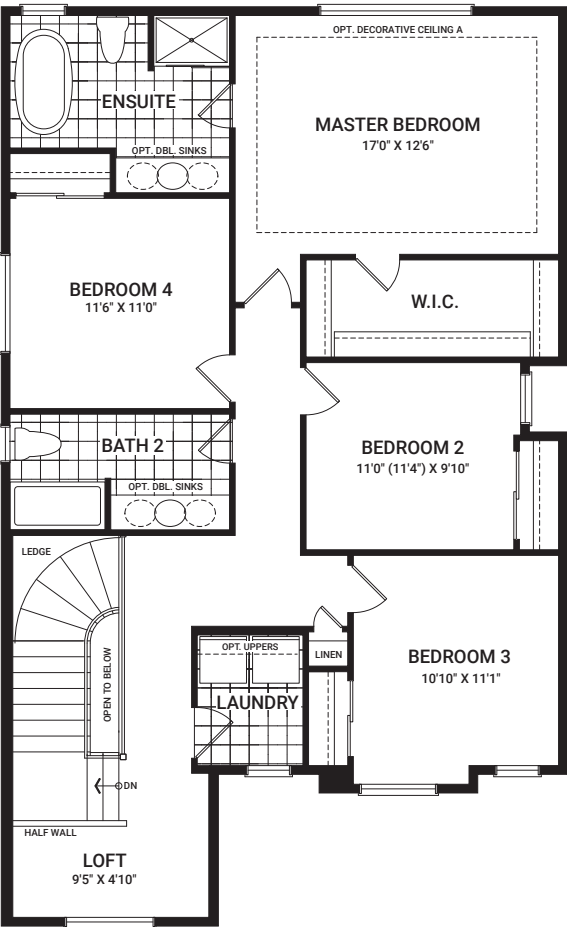


Floorplan – Elevation A

MAIN FLOOR

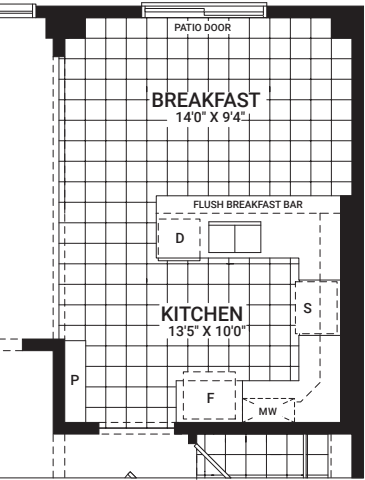


SECOND FLOOR

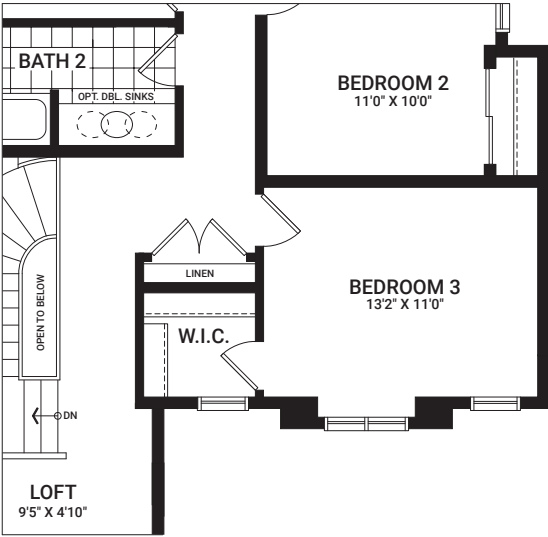


Flex Plans

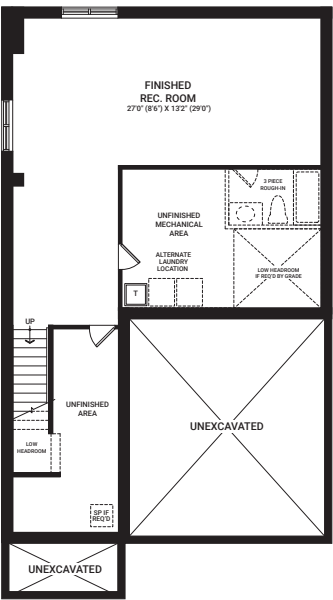
OPTIONAL KITCHEN LAYOUT A



OPTIONAL SECOND FLOOR LAYOUT A



OPTIONAL FINISHED BASEMENT REC. ROOM

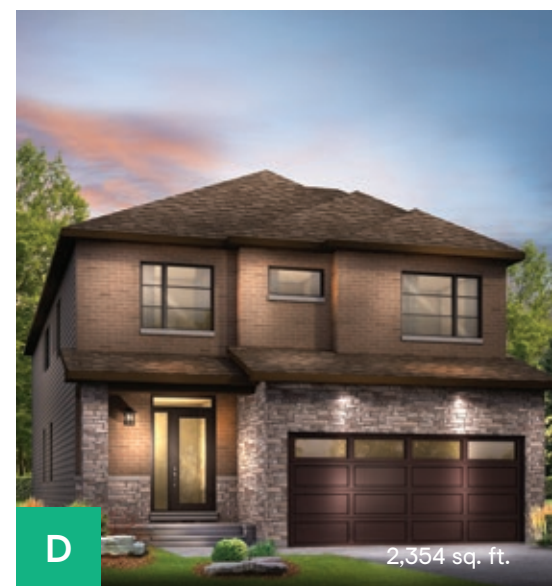
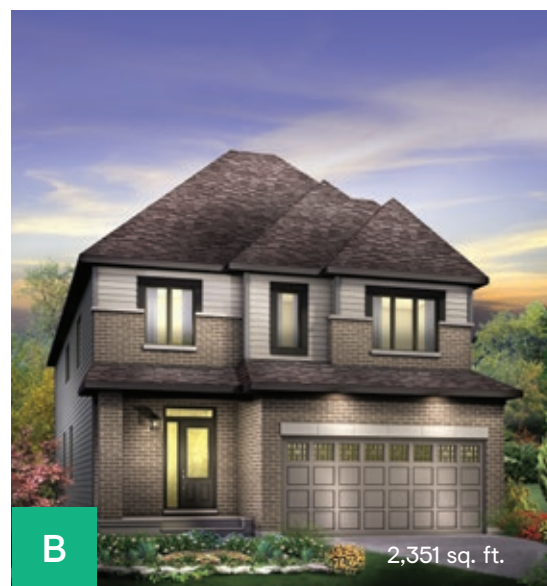
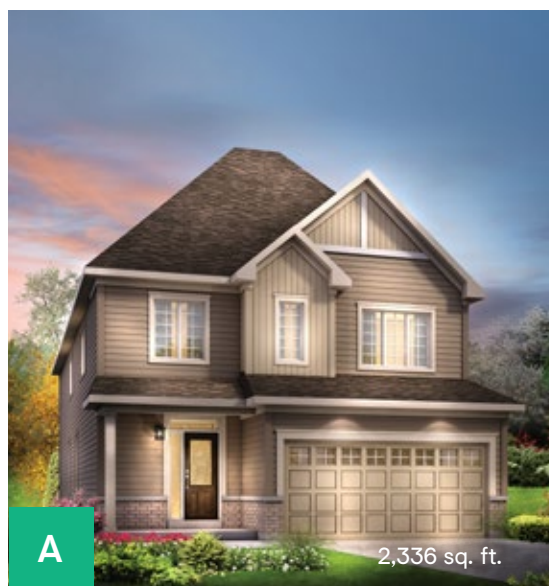


All plans, dimensions, and specifications are subject to change without notice. Actual usable floor space may vary from the stated floor area. Column locations, window locations, and sizes may vary and are subject to change without notice. Renderings are artist's concept only. E.&O.E. July, 2020

*Ask our Sales Agents about other options for this home.

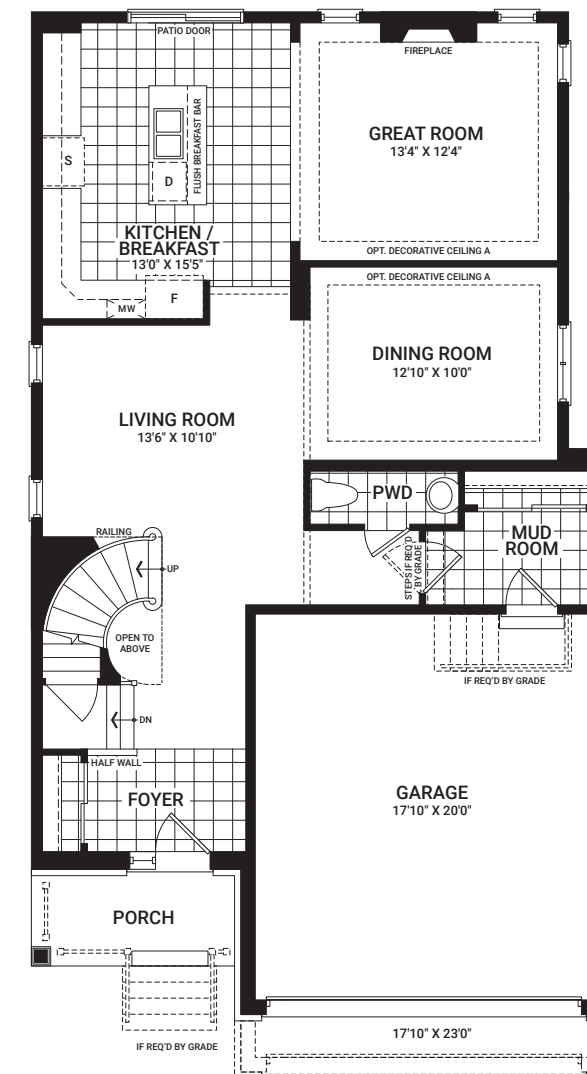
Georgian

2,336 sq. ft.

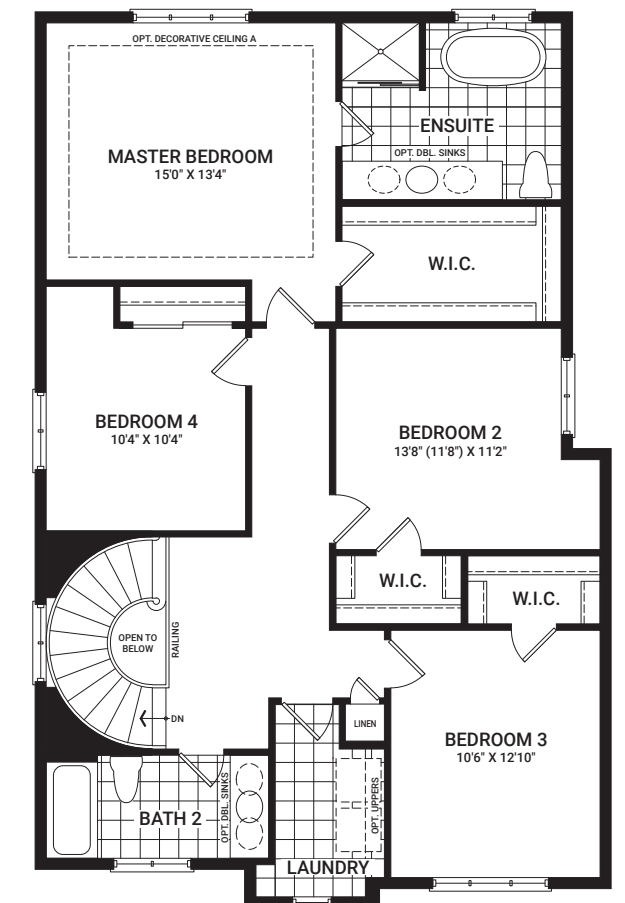


Floorplan – Elevation A

MAIN FLOOR

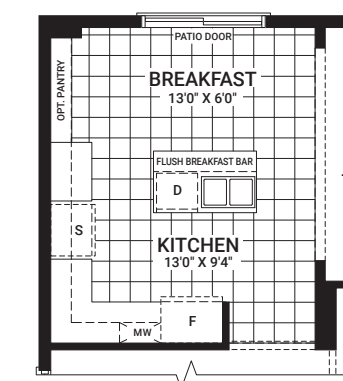


SECOND FLOOR

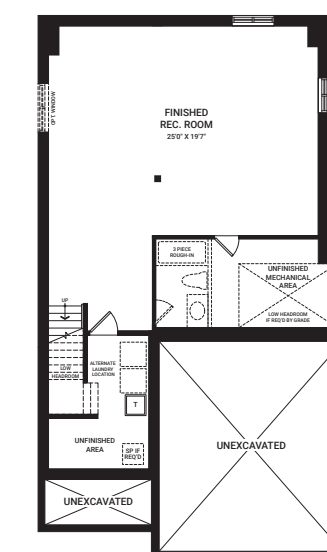


Flex Plans

OPTIONAL KITCHEN LAYOUT A



OPTIONAL FINISHED BASEMENT
REC. ROOM



All plans, dimensions, and specifications are subject to change without notice. Actual usable floor space may vary from the stated floor area. Column locations, window locations, and sizes may vary and are subject to change without notice. Renderings are artist's concept only. E.&O.E. July, 2020

*Ask our Sales Agents about other options for this home.

D

2,398 sq. ft.

A

2,378 sq. ft.

B

2,398 sq. ft.

*Ask our Sales Agents about other options for this home.



Killarney

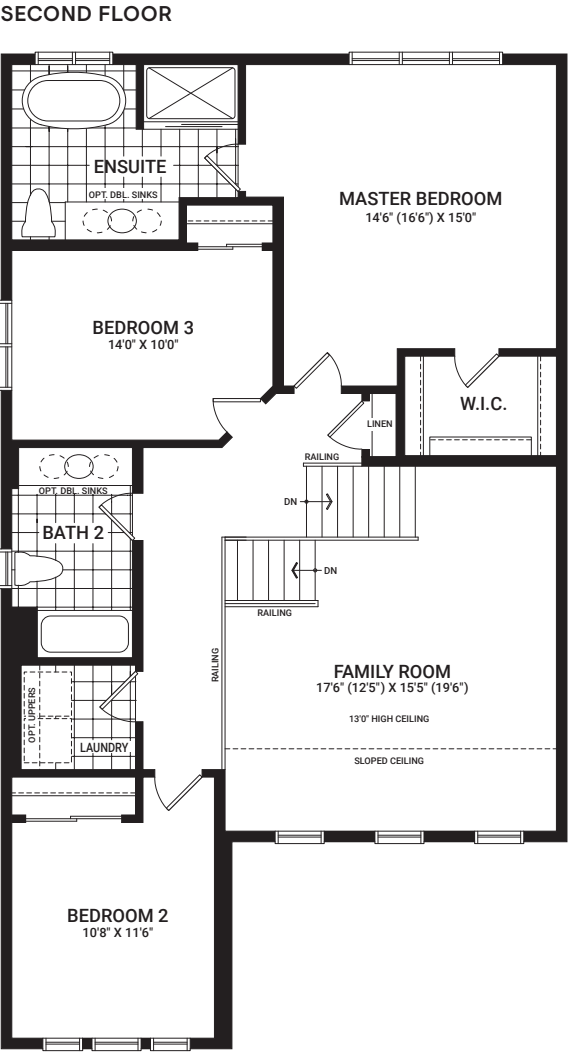
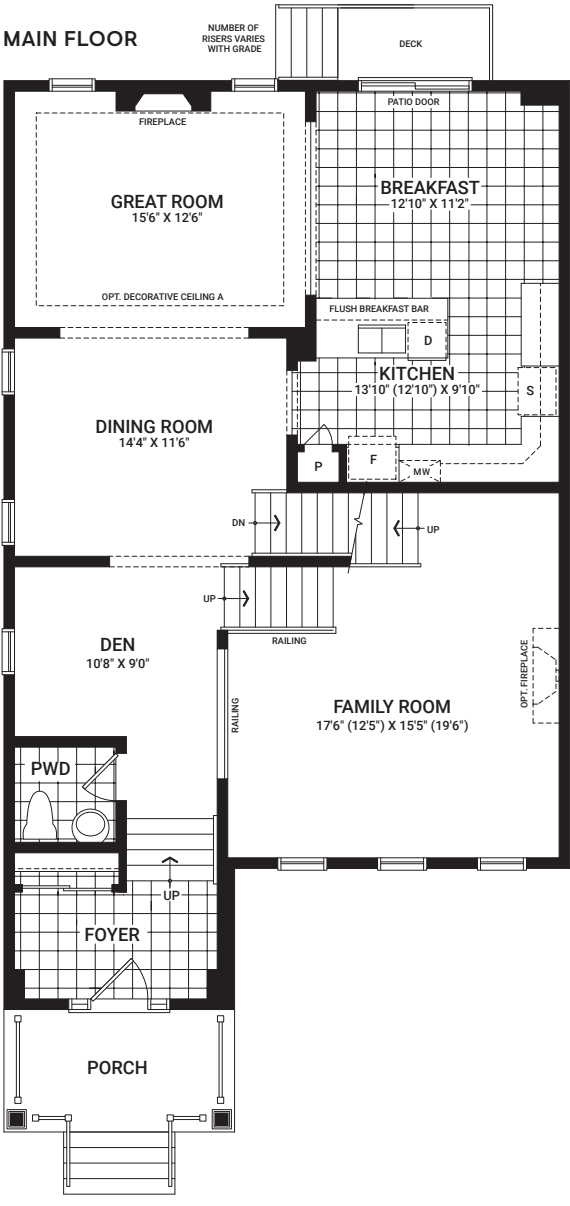
2,443 sq. ft.

2,443 sq. ft.



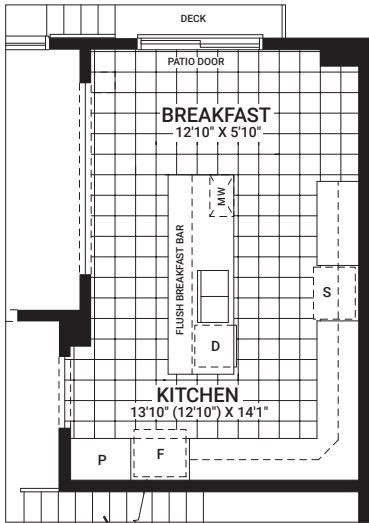
2,461 sq. ft.

Floorplan – Elevation A

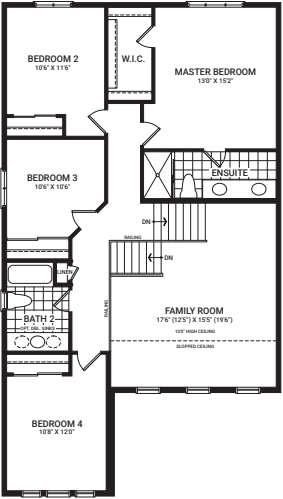


Flex Plans

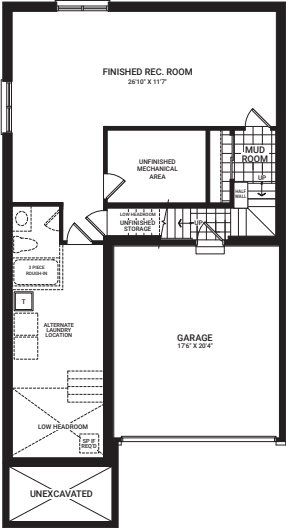
OPTIONAL KITCHEN LAYOUT A



OPTIONAL 4 BEDROOM SECOND FLOOR LAYOUT



OPTIONAL FINISHED BASEMENT REC. ROOM

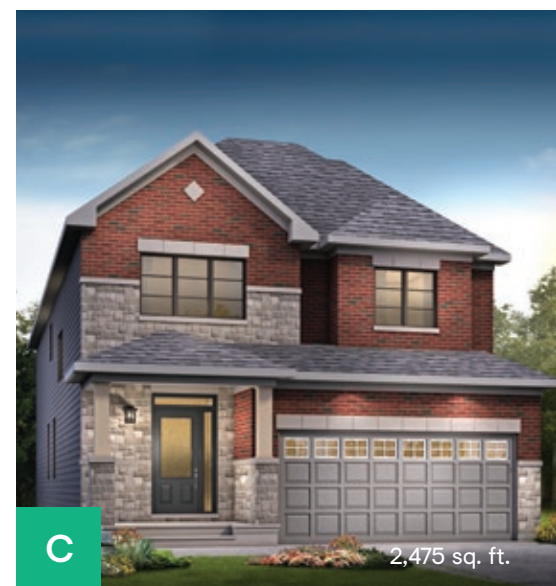


All plans, dimensions, and specifications are subject to change without notice. Actual usable floor space may vary from the stated floor area. Column locations, window locations, and sizes may vary and are subject to change without notice. Renderings are artist's concept only. E.&O.E. July, 2020

*Ask our Sales Agents about other options for this home.

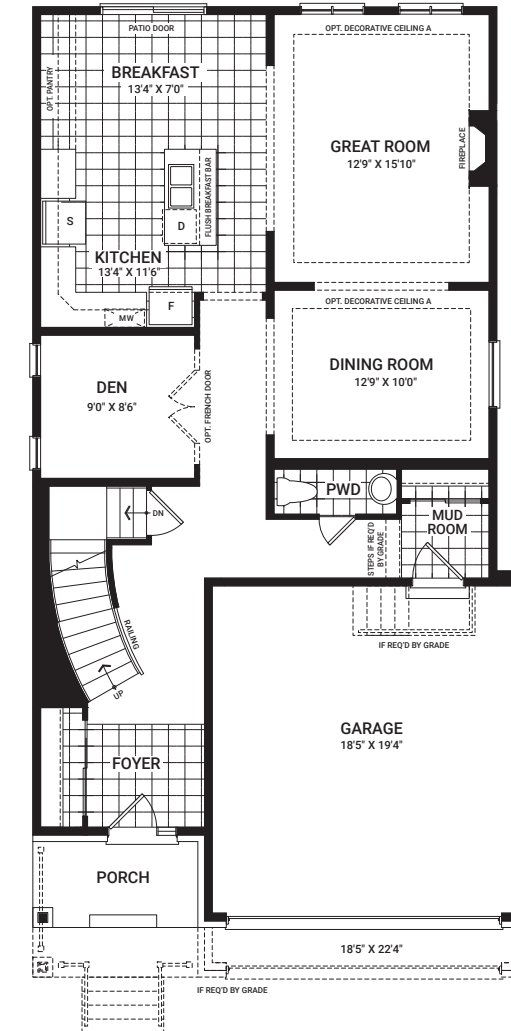
Stanley

2,461 sq. ft.

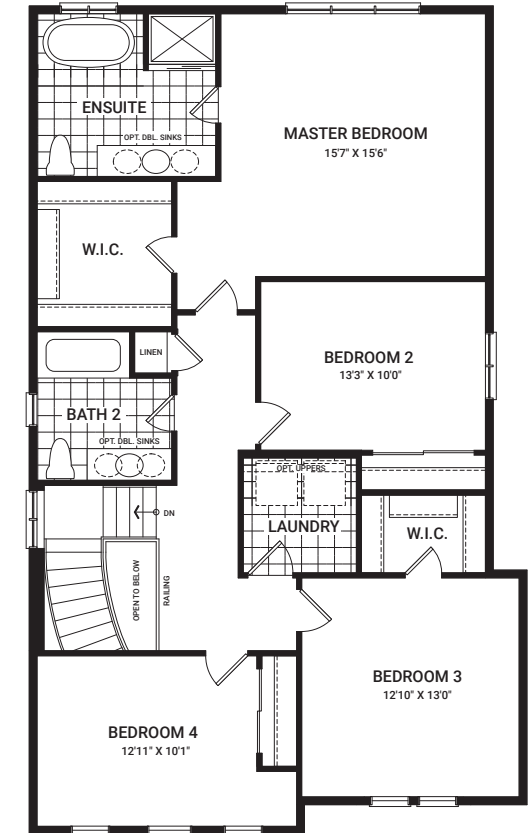


Floorplan – Elevation A

MAIN FLOOR

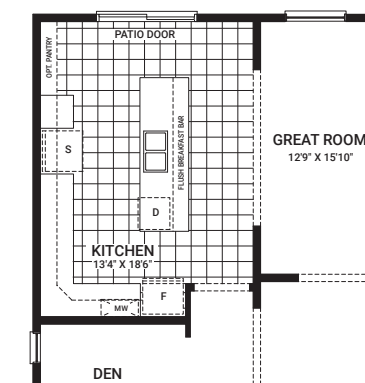


SECOND FLOOR

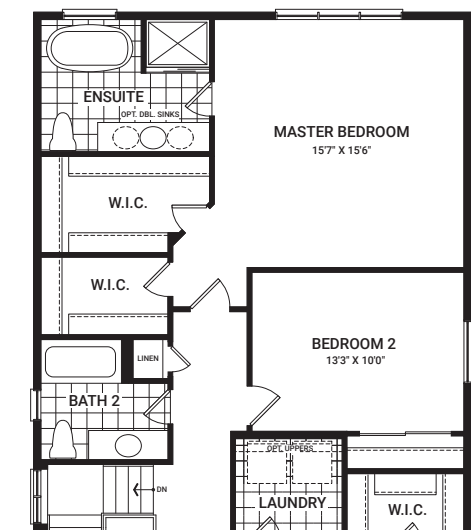


Flex Plans

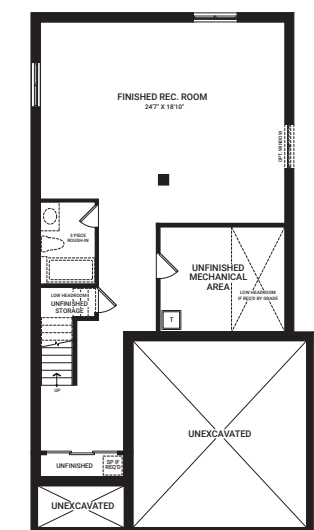
OPTIONAL KITCHEN LAYOUT A



OPTIONAL MASTER BEDROOM LAYOUT A



OPTIONAL FINISHED BASEMENT
REC. ROOM



All plans, dimensions, and specifications are subject to change without notice. Actual usable floor space may vary from the stated floor area. Column locations, window locations, and sizes may vary and are subject to change without notice. Renderings are artist's concept only. E.&O.E. July, 2020

*Ask our Sales Agents about other options for this home.

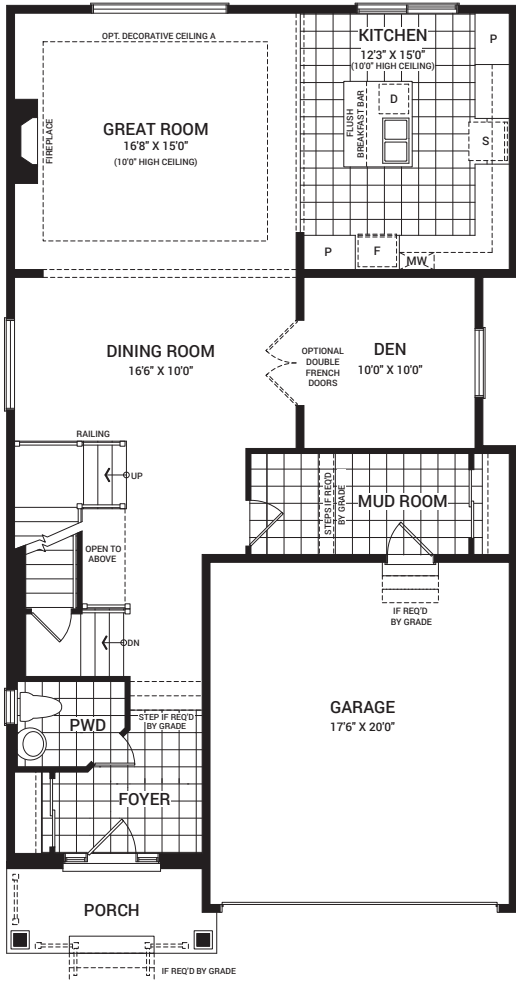
Waverley

2,629 sq. ft.

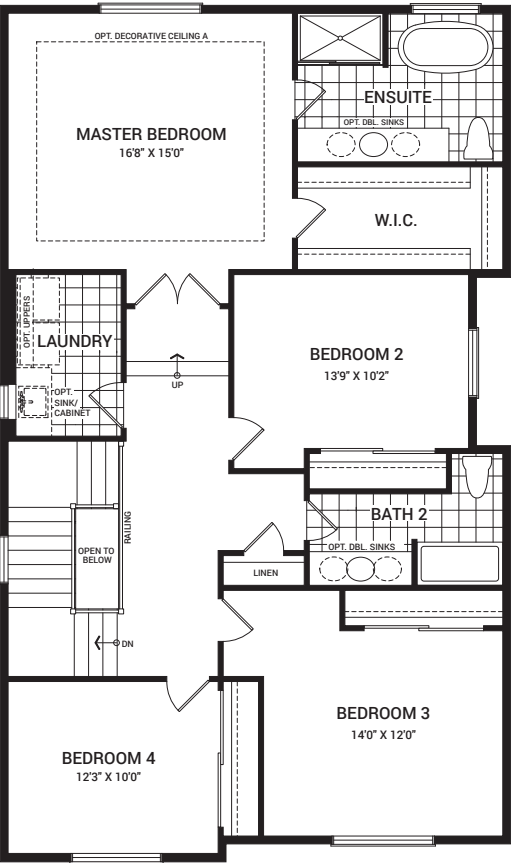


Floorplan – Elevation A

MAIN FLOOR

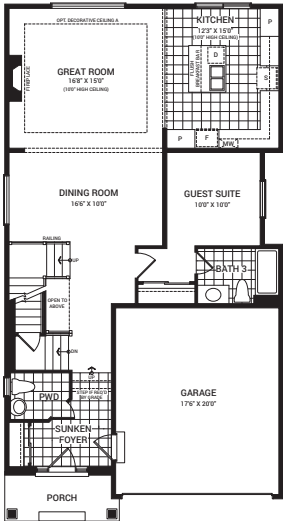


SECOND FLOOR

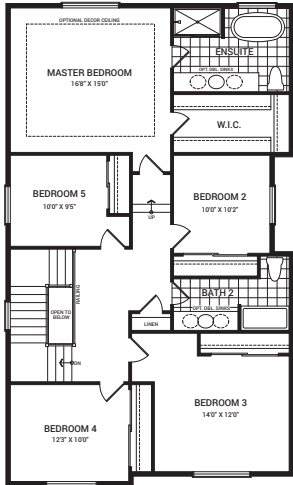


Flex Plans

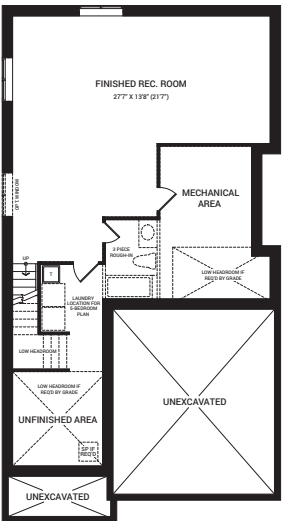
OPTIONAL GUEST SUITE
MAIN FLOORPLAN A



OPTIONAL 5 BEDROOM
SECOND FLOORPLAN A



OPTIONAL FINISHED BASEMENT
REC. ROOM



All plans, dimensions, and specifications are subject to change without notice. Actual usable floor space may vary from the stated floor area. Column locations, window locations, and sizes may vary and are subject to change without notice. Renderings are artist's concept only. E.&O.E. July, 2020

*Ask our Sales Agents about other options for this home.



Homes and communities designed for a life well lived

Purchasing a home is one of the most important decisions you'll ever make. We're happy to offer each of our homeowners over 65 years of dedicated and committed building experience so you can make that decision with confidence.

At Minto Communities Ottawa, we're building better places to live, work, and play — one home and one relationship at a time. We have an ongoing investment in the health of this city's residents and the

communities they call home. It's all about the special moments for us. We've built homes across Ottawa for generations, but what we're most proud of is the connections we've made with our homeowners and sharing the excitement of handing over a new set of keys.

We are part of Minto Group, a home builder, developer, property and investment manager for over 65 years that began here in Ottawa and has since grown to Toronto and the GTA, London, Calgary, Edmonton, and Florida, USA.

CALGARY | EDMONTON | FLORIDA | TORONTO & GTA | LONDON | OTTAWA

Our homes are designed and built for the way you live, where life's necessities are close at hand — often just a walk away.

Proud supporters of the Children's Hospital of Eastern Ontario (CHEO)





E.&O.E. Renderings are artists' concept only. Subject to change without notice.



Minutes away by car from Arcadia, Kanata	
Downtown	23 minutes
Tanger Outlets	5 minutes
Kanata Centrum	5 minutes
Canadian Tire Centre	3 minutes

Legend

SHOPPING CENTRES

1. **Kanata Centrum Shopping Centre**

3 Brewers
Aperitivo
Bâton Rouge Steakhouse & Bar
Boston Pizza
Centrum Dental Centre
Chapters
CIBC
Dr. Yamen Ghamian
Dollarama
Landmark Cinemas
Loblaws
Milestones
Moxie's Grill & Bar
PetSmart
Sport Check
TD Canada Trust
Walmart Supercentre
And More...
2. **Signature Centre**

BMO Bank of Montreal
Farm Boy
LCBO
Shoppers Drug Mart
Fratelli Kanata
Zak's Diner
Dairy Queen
Tim Hortons
3. **Tanger Outlets**

American Eagle Outfitters
Banana Republic Factory
Calvin Klein Outlet
Coach
David's Tea
Fossil
Lucky Brand Jeans
Marshalls
Michael Kors Outlet
Nike Factory Store
Reebok
Roots Canada
Saks OFF 5TH
Subway
Trade Secrets
And More...
4. **The Shoppes at Fairwinds**

Penningtons
Hazeldean Animal Hospital
Fairwinds Dental Clinic
Food Basics
Shoppers Drug Mart
Toys“R”Us

5. **Grant Crossing**

Bouclair Home
Winners
Michaels
Lowe's Home Improvement
JYSK
Kal's Place Restaurant
Five Guys
Fusion
Mr Shawarma
Bushtukah Stittsville

- RELIGIOUS

41. St. Paul's Anglican Church

- SCHOOLS

Ottawa Carleton District School Board

42. John Young Elementary School
43. Castlefrank Elementary School
44. AY Jackson Secondary School
45. Stephen Leacock Public School
46. Earl Of March Secondary School
47. W. Erskine Johnston Public School
- Ottawa Catholic High School (French)**

48. École Secondaire Catholique Paul-Desmarais
- Ottawa Catholic School Board**

49. St. Stephen School
50. Holy Trinity Catholic High School
51. All Saints High School
52. St. Gabriel School
- Private School**

53. Kanata Academy Private School

- SERVICES

7. Appletree Medical Group
8. Cabela's
9. Canadian Tire
10. The Brick
11. La-Z-Boy
12. The Home Depot
13. Costco Wholesale
14. Dr. Andrea Stevens Dentistry
15. Esso
16. Hazeldean Medical Clinic
17. M&M Food Market
18. Ottawa Police Service
19. Petro-Canada
20. Princess Auto
21. Sobey's
22. Ottawa Public Library - Beaverbrook
23. Ottawa Public Library
24. Bulk Barn

- SPORTS & RECREATION

25. Movati Athletic
26. Kanata Leisure Centre and Wave Pool
27. Kanata Recreation Complex
28. Jack Charron Arena
29. Anytime Fitness

- CULTURE & ENTERTAINMENT

30. Bell Sensplex
31. Canadian Tire Centre

- DINING

32. McDonald's
33. Starbucks
34. Starbucks
35. D'Arcy McGee's
36. Swiss Chalet Rotisserie & Grill
37. East Side Mario's
38. The Keg
39. Colonnade Pizza
40. Chocolats Favoris

★ Minto Kanata Sales Centre

Thank you for visiting.



OTTAWA
BUILDER
OF THE YEAR
2019