

N S

**45'**  
Bungalows

**52'**  
Bungalows





## Mahogany, Manotick

Where unique home designs and beautiful streetscapes are woven around tranquil creeks, ponds, and parkland.

Grass brushes your ankles,  
a light breeze gently lifts your  
hair, the familiar earthy scent  
of nature surrounds you,  
and you're home.





## traditions

Family friendly streets are lined with architecturally inspired homes and stone finishes — an ode to Manotick's enduring mill history.



## live better

At Minto's Mahogany, we are committed to your health, happiness and wellbeing. From sustainable and innovative design that considers the quality of your sleep, the air you breathe, and the water you drink to open spaces that encourage personal connections with family. We have explored the impact of a community designed around nature for an active healthy lifestyle. Everything you need to live your best life is in Mahogany.

## Find a neighbour in nature

Mahogany is a Minto community like no other. Beautiful neighbourhoods are built around lovingly preserved green spaces, natural creeks, and ponds. Wind through a 50 acre woodlot along tree-lined trails perfect for a morning jog or an evening stroll with the dog.

Plus, with the addition of an English Public Elementary School in the centre of the community, you have peace of mind knowing your children can take the 5-minute walk to school along quiet streets.





## It's in the details

We use the latest high-performance windows to regulate your home's temperature. And they're bigger too, so every room is filled with bright, natural sunlight.

## It's yours to design

Choose from the latest trends in interior features and finishes with help from our expert Design Centre. Your picture perfect home exists — it's here in Manotick.



## The charm of Manotick, the design of Mahogany

Inspired by the timeless charm of the village of Manotick, each home has a stylish and contemporary exterior perfectly suited to the picturesque village character. Contemporary interiors shine with open-concept floorplans that create a flow throughout the house and large windows that fill every room with bright natural light.

- Open-concept floorplans move you freely from room to room
- Home designs unique to Mahogany
- Built on large lots
- Contemporary style and elegance





## Escape the city

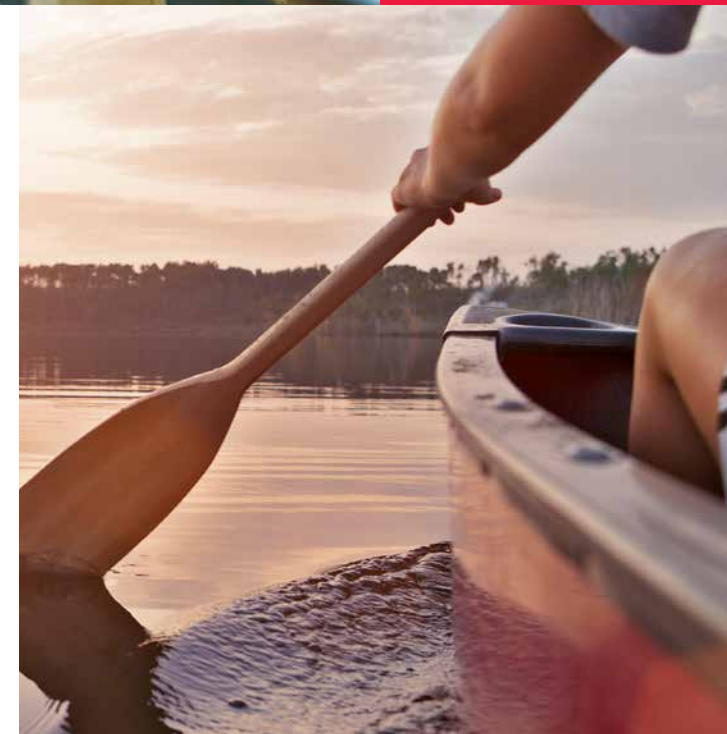
Let the quaint and vibrant charm of Manotick embrace you. Everything you need is a stroll away down Manotick Walk. Along the shores of the Rideau River, boats line the docks of Mahogany Harbour and families enjoy sunny days by the water before exploring bustling Manotick Main Street.



## cuisine

## culture

Shop local and eat at independently owned restaurants and cafes. Butchers, bakers, florists, boutiques, markets and grocers, salons and spas all add to Manotick's unique village lifestyle.







## 45' & 52' Bungalows

Our collection of Bungalows features superb designs on 45' and 52' lots in Mahogany. With two spacious bedrooms, a large eat-in kitchen and open-concept floorplans that move you from room to room, a Mahogany Bungalow is an excellent option for families and couples of all sizes.





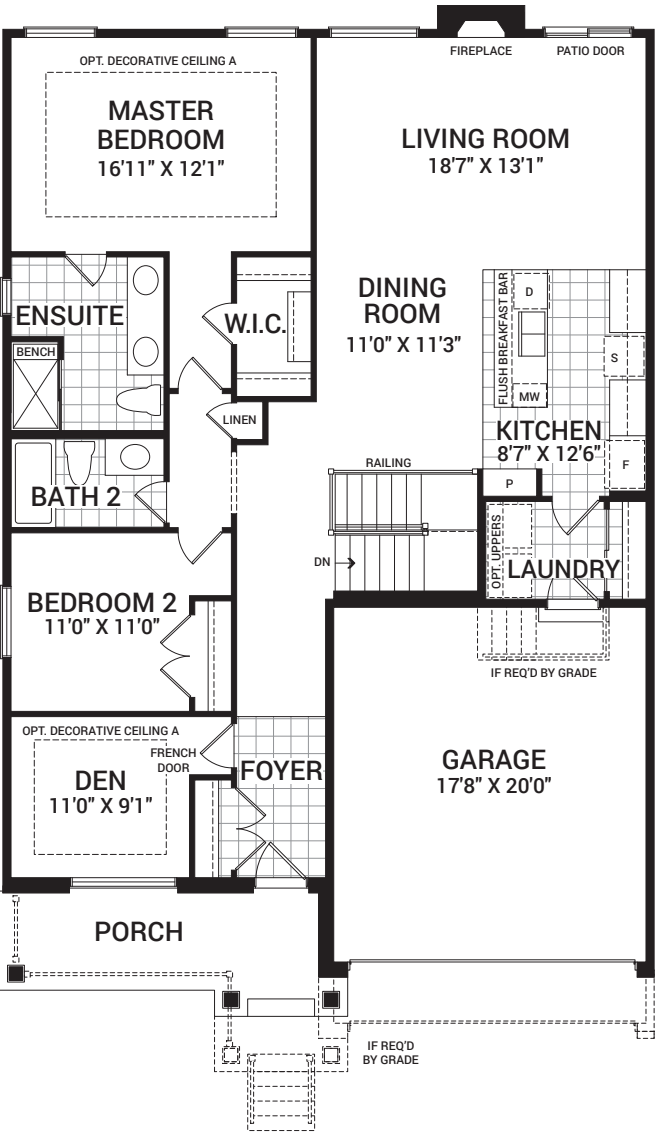
# Bay Willow

1,505 sq. ft.

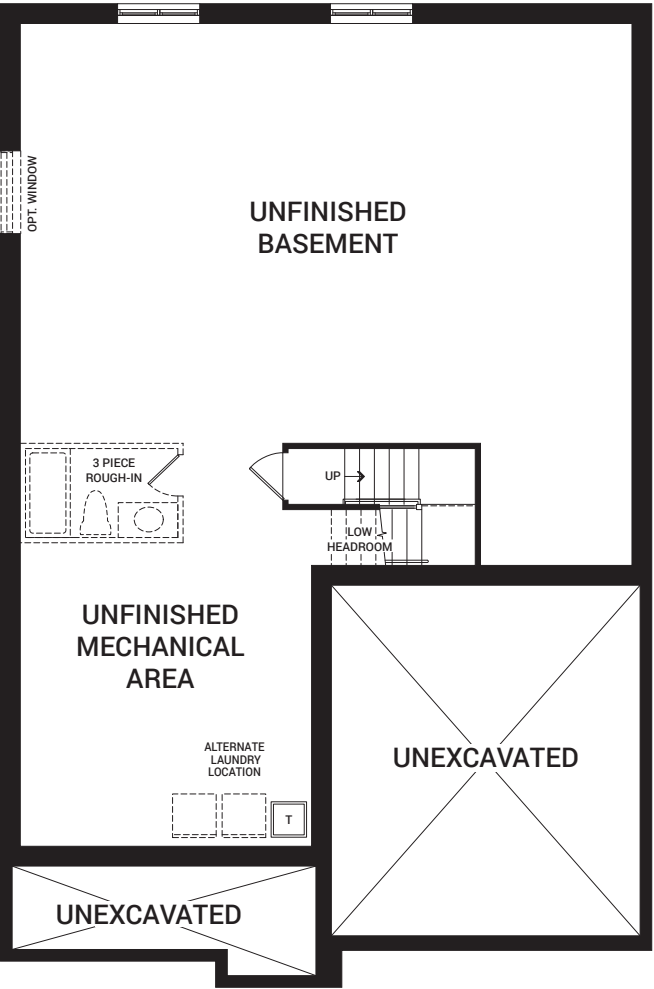


## Floorplan – Elevation A

MAIN FLOOR

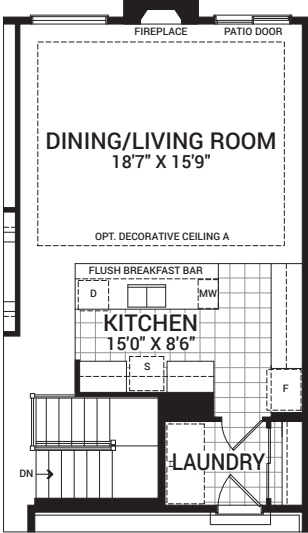


BASEMENT

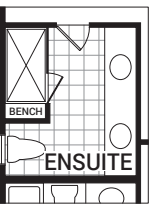


## Flex Plans

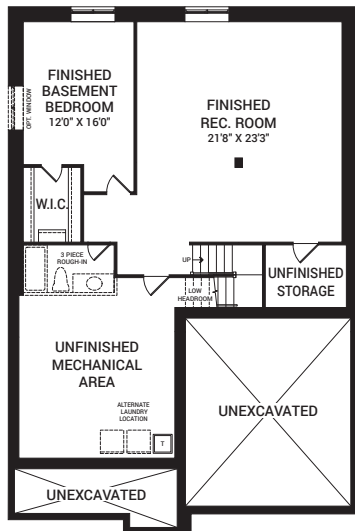
OPTIONAL MAIN FLOOR LAYOUT A



OPTIONAL ENSUITE LAYOUT A



OPTIONAL FINISHED BASEMENT REC. ROOM W/BEDROOM



All plans, dimensions, and specifications are subject to change without notice. Actual usable floor space may vary from the stated floor area. Column locations, window locations, and sizes may vary and are subject to change without notice. Renderings are artist's concept only. E.&O.E. January 2020

\*Ask our Sales Agents about other options for this home.



# Butternut II

1,630 sq. ft.



C

1,630 sq. ft.



A

1,630 sq. ft.

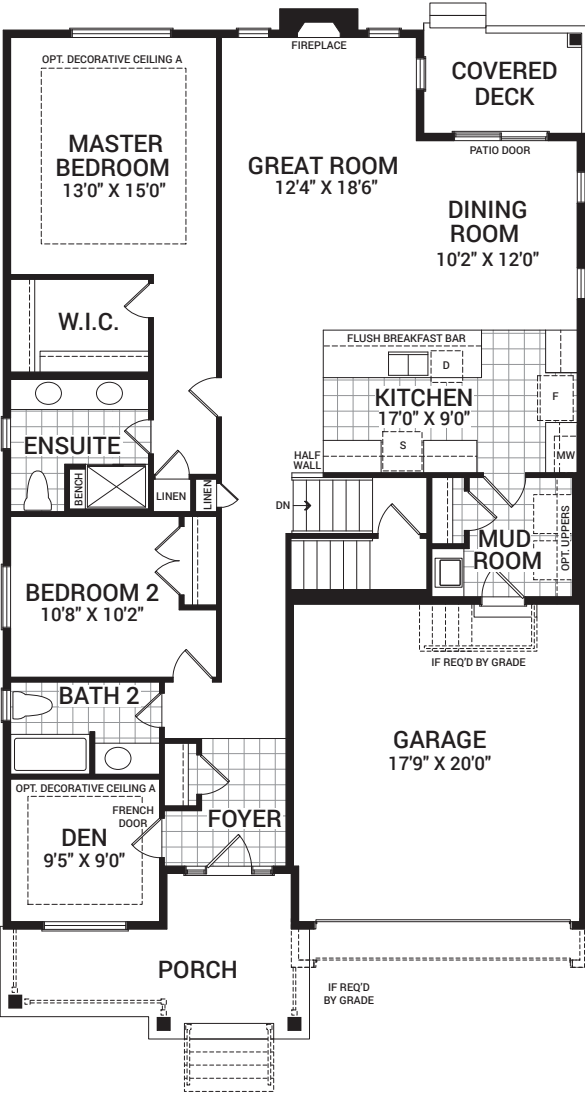


B

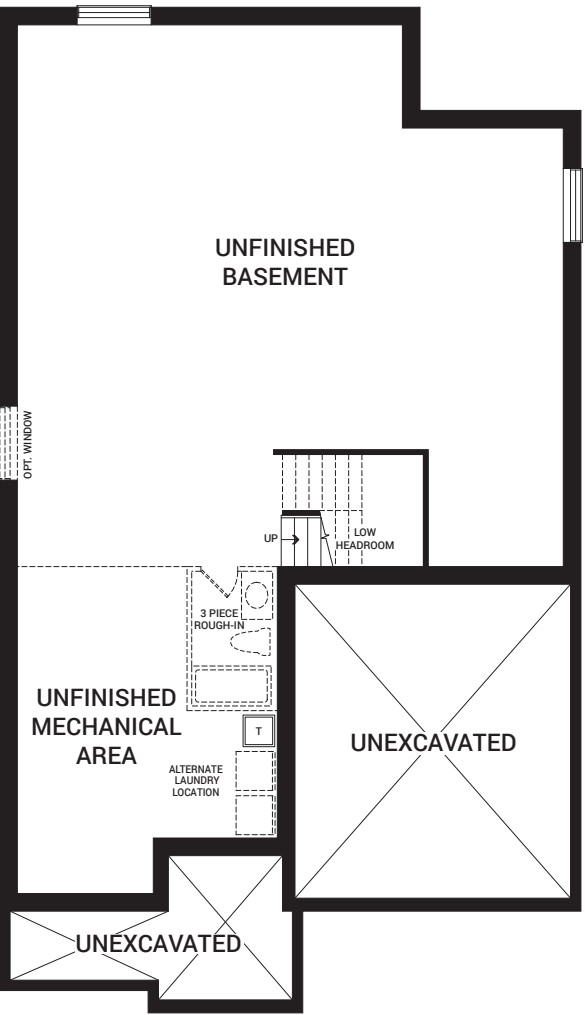
1,630 sq. ft.

## Floorplan – Elevation A

MAIN FLOOR

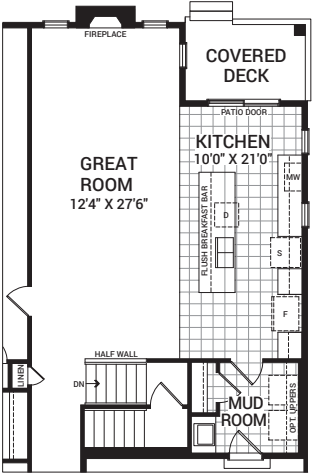


BASEMENT

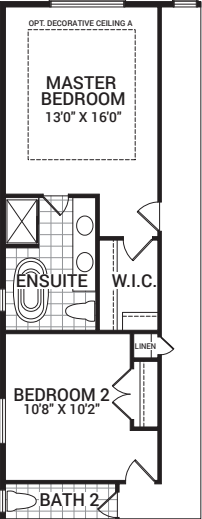


## Flex Plans

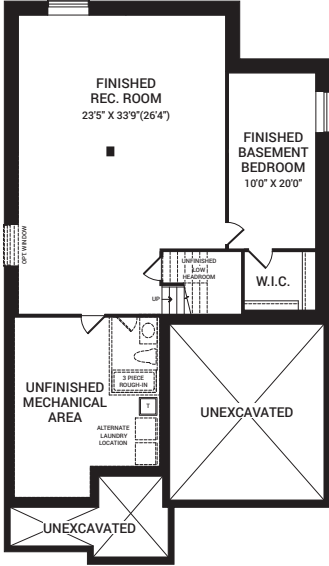
OPTIONAL KITCHEN LAYOUT A



OPTIONAL MAIN FLOOR LAYOUT A



OPTIONAL FINISHED BASEMENT REC. ROOM W/BEDROOM



All plans, dimensions, and specifications are subject to change without notice. Actual usable floor space may vary from the stated floor area. Column locations, window locations, and sizes may vary and are subject to change without notice. Renderings are artist's concept only. E.&O.E. January 2020

\*Ask our Sales Agents about other options for this home.



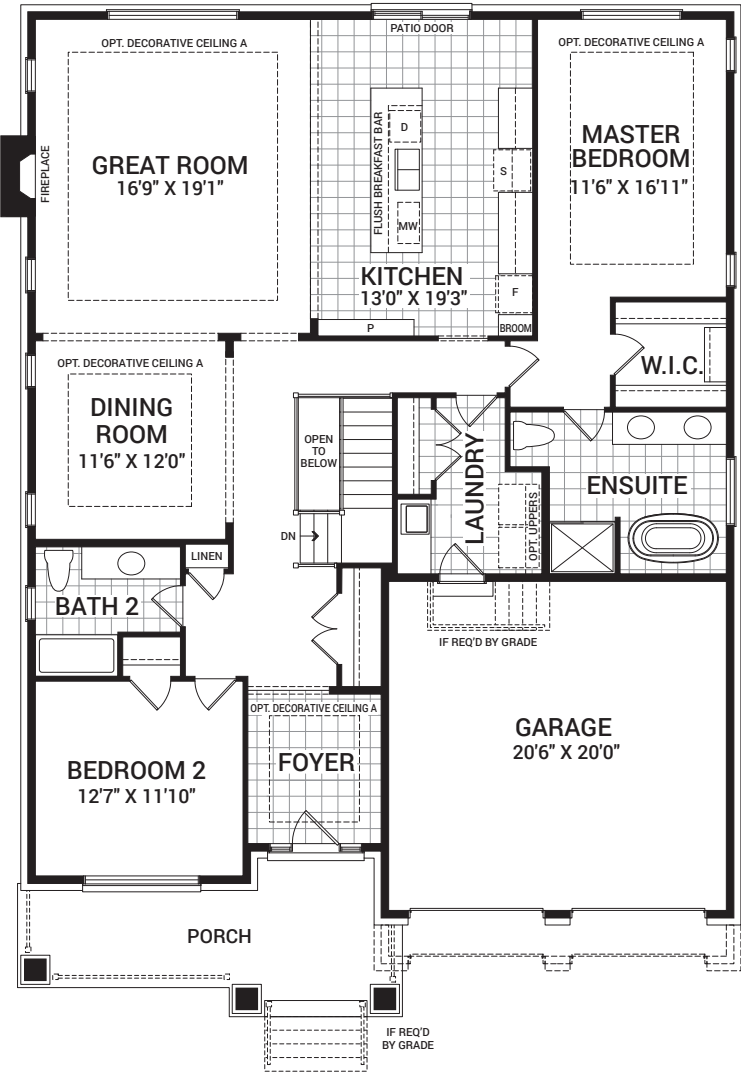
# Evergreen

1,966 sq. ft.

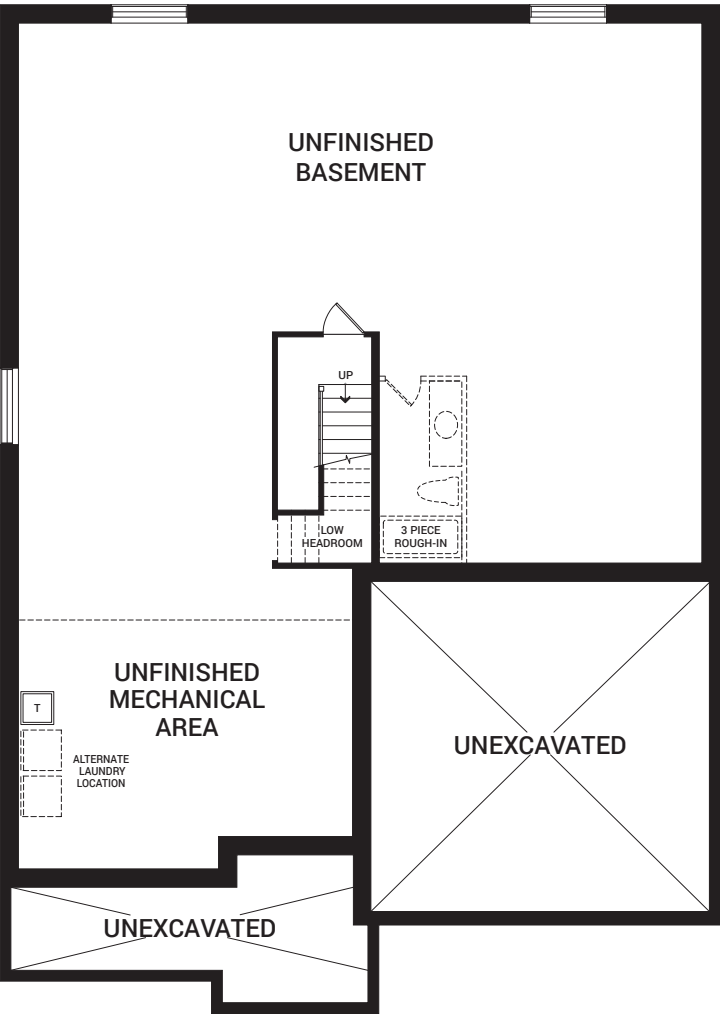


## Floorplan – Elevation A

MAIN FLOOR

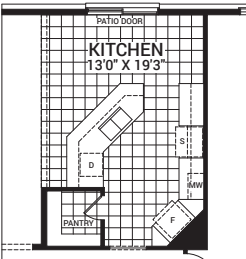


BASEMENT

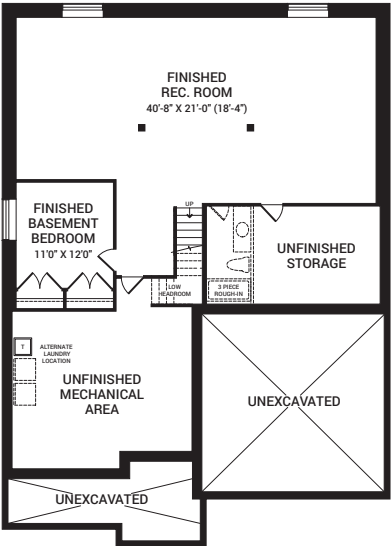


### Flex Plans

OPTIONAL KITCHEN LAYOUT A



OPTIONAL FINISHED BASEMENT REC. ROOM W/BEDROOM



All plans, dimensions, and specifications are subject to change without notice. Actual usable floor space may vary from the stated floor area. Column locations, window locations, and sizes may vary and are subject to change without notice. Renderings are artist's concept only. E.&O.E. January 2020

\*Ask our Sales Agents about other options for this home.





## Homes and communities designed for a life well lived

Purchasing a home is one of the most important decisions you'll ever make. We're happy to offer each of our homeowners over 65 years of dedicated and committed building experience so you can make that decision with confidence.

At Minto Communities Ottawa, we're building better places to live, work, and play — one home and one relationship at a time. We have an ongoing investment in the health of this city's residents and the

communities they call home. It's all about the special moments for us. We've built homes across Ottawa for generations, but what we're most proud of is the connections we've made with our homeowners and sharing the excitement of handing over a new set of keys.

We are part of Minto Group, a home builder, developer, property and investment manager for over 65 years that began here in Ottawa and has since grown to Toronto and the GTA, London, Calgary, Edmonton, and Florida, USA.

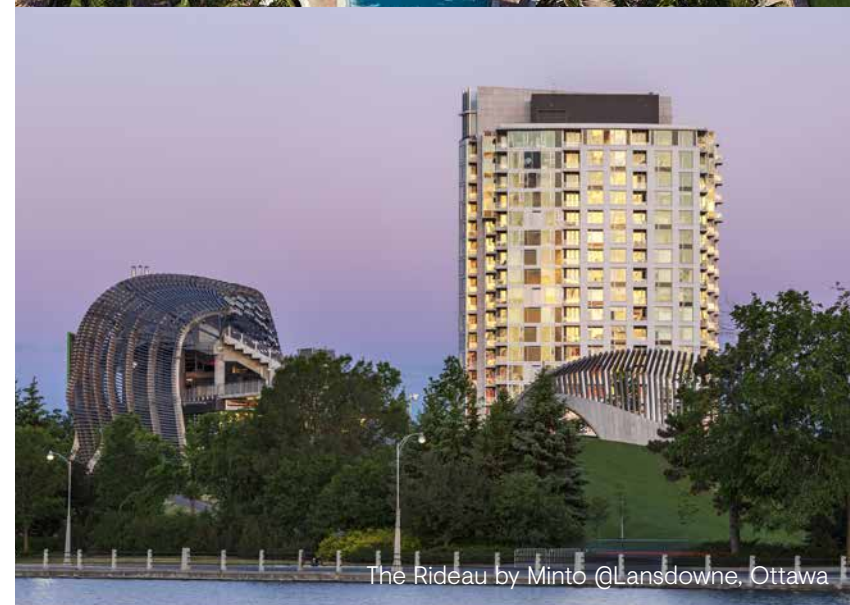
CALGARY | EDMONTON | FLORIDA | TORONTO & GTA | LONDON | OTTAWA

Our homes are designed and built for the way you live, where life's necessities are close at hand — often just a walk away.

Proud supporters of the Children's Hospital of Eastern Ontario (CHEO)



Artesia, Fort Lauderdale



The Rideau by Minto @ Lansdowne, Ottawa

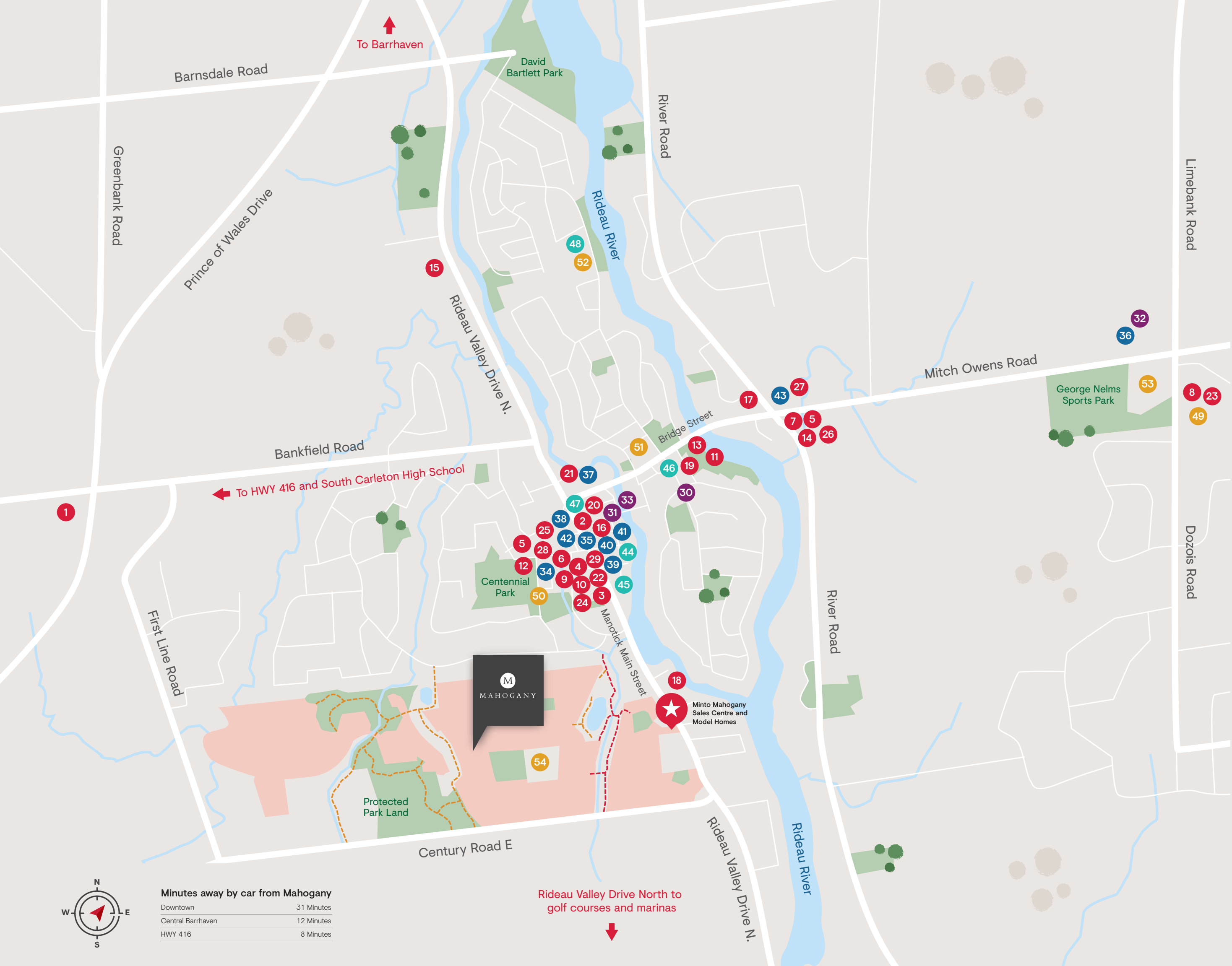


Quinn's Pointe, Barrhaven



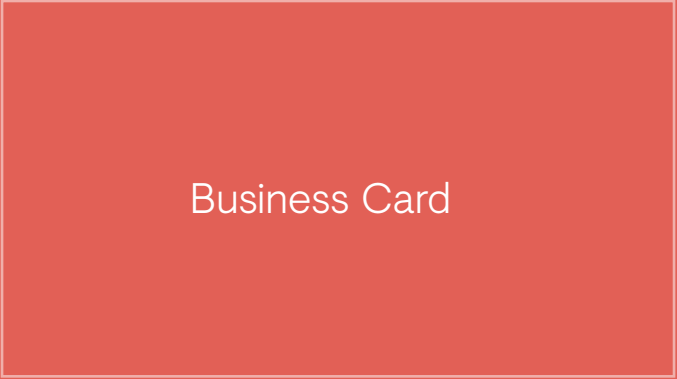
Midtown, Toronto







Thank you for visiting.







OTTAWA  
BUILDER  
OF THE YEAR  
**2019**