

THE SABAL COLLECTION

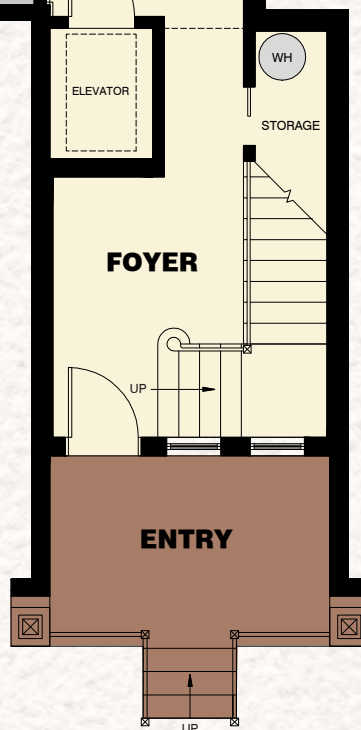
POINCIANA

3 Bedrooms / 2 Baths / Covered Lanai / 2-Car Garage

The Isles[™]
OF COLLIER PRESERVE



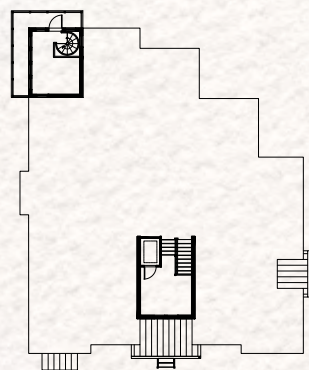
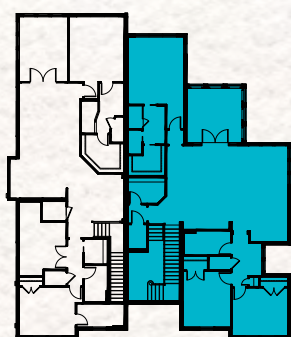
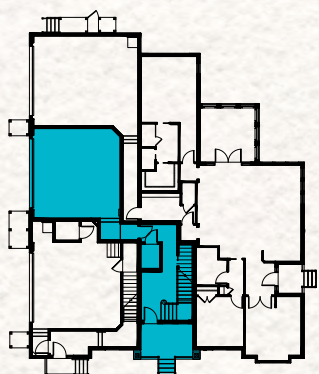
FIRST FLOOR PLAN



SECOND FLOOR PLAN



AVAILABLE DEN VARIATION



First Floor	252 S.F.
Second Floor	1,700 S.F.
Total Living Area	1,952 S.F.
2-Car Garage	481 S.F.
Entry	95 S.F.
Lanai	184 S.F.
Elevator	24 S.F.
Total	2,736 S.F.