

PALMETTO COLLECTION

IXORA

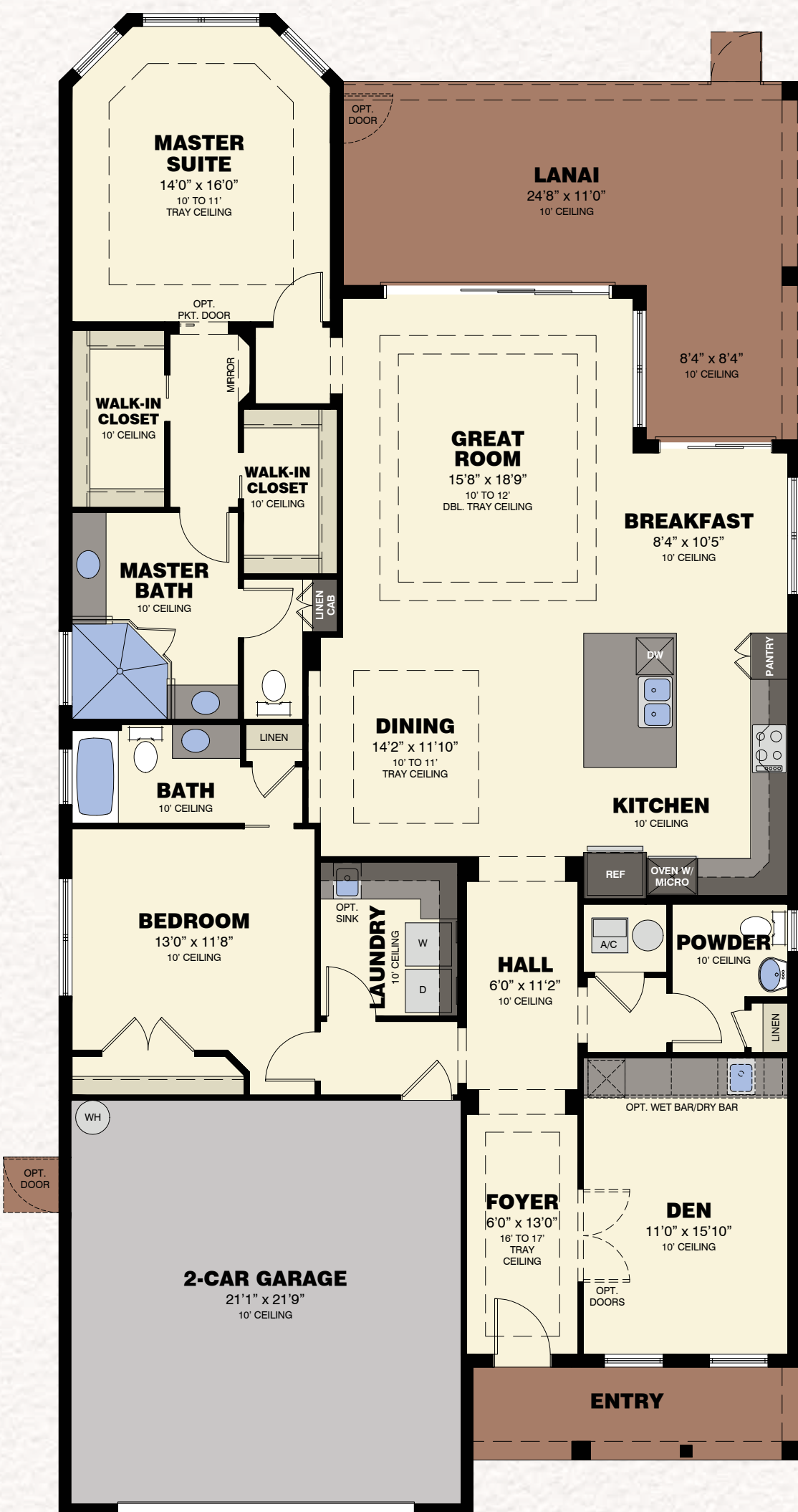
2 Bedrooms / 2.5 Baths / Den / Covered Lanai / 2-Car Garage



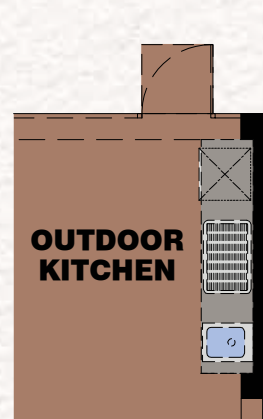
Elevation A



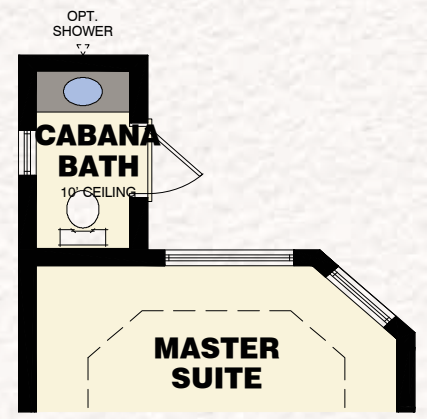
Elevation B



FLOOR PLAN



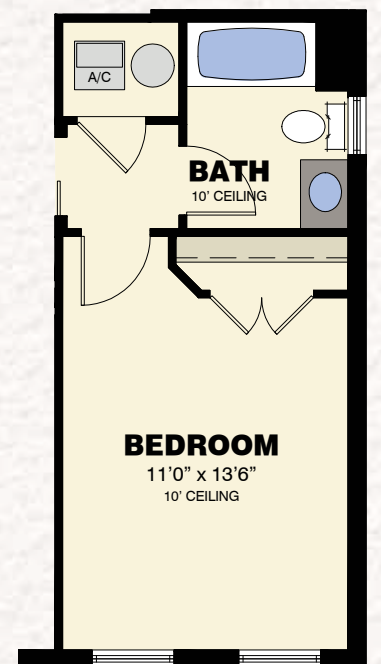
AVAILABLE
OUTDOOR KITCHEN
VARIATION



AVAILABLE
CABANA BATH
VARIATION



AVAILABLE
MASTER BATH
VARIATION



AVAILABLE
BEDROOM
VARIATION

Total Living Area	2,163 S.F.
2-Car Garage	491 S.F.
Entry	88 S.F.
Lanai	341 S.F.
Total	3,083 S.F.