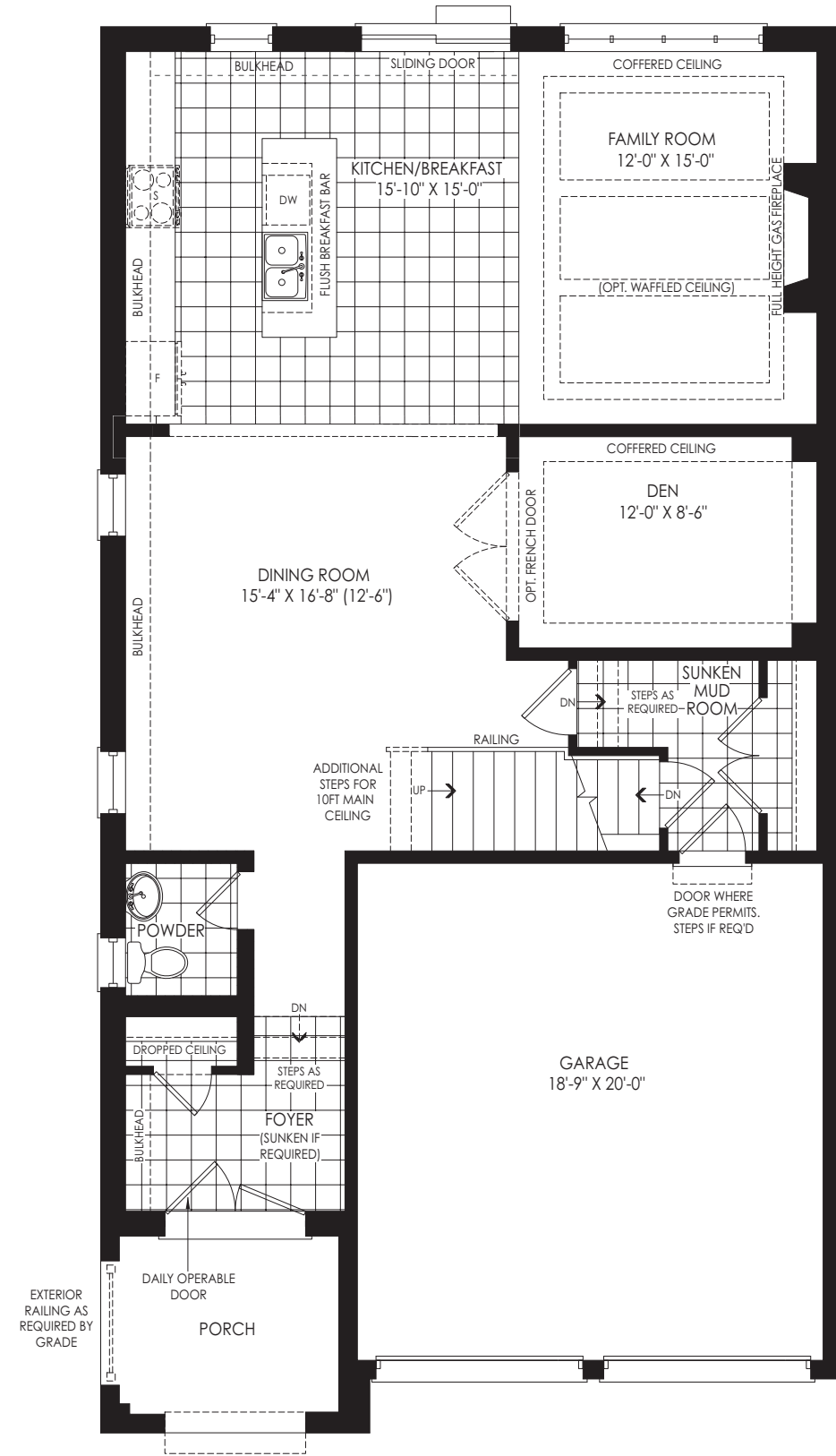


ELEVATION B | ENGLISH MANOR
2,623 SQ.FT.

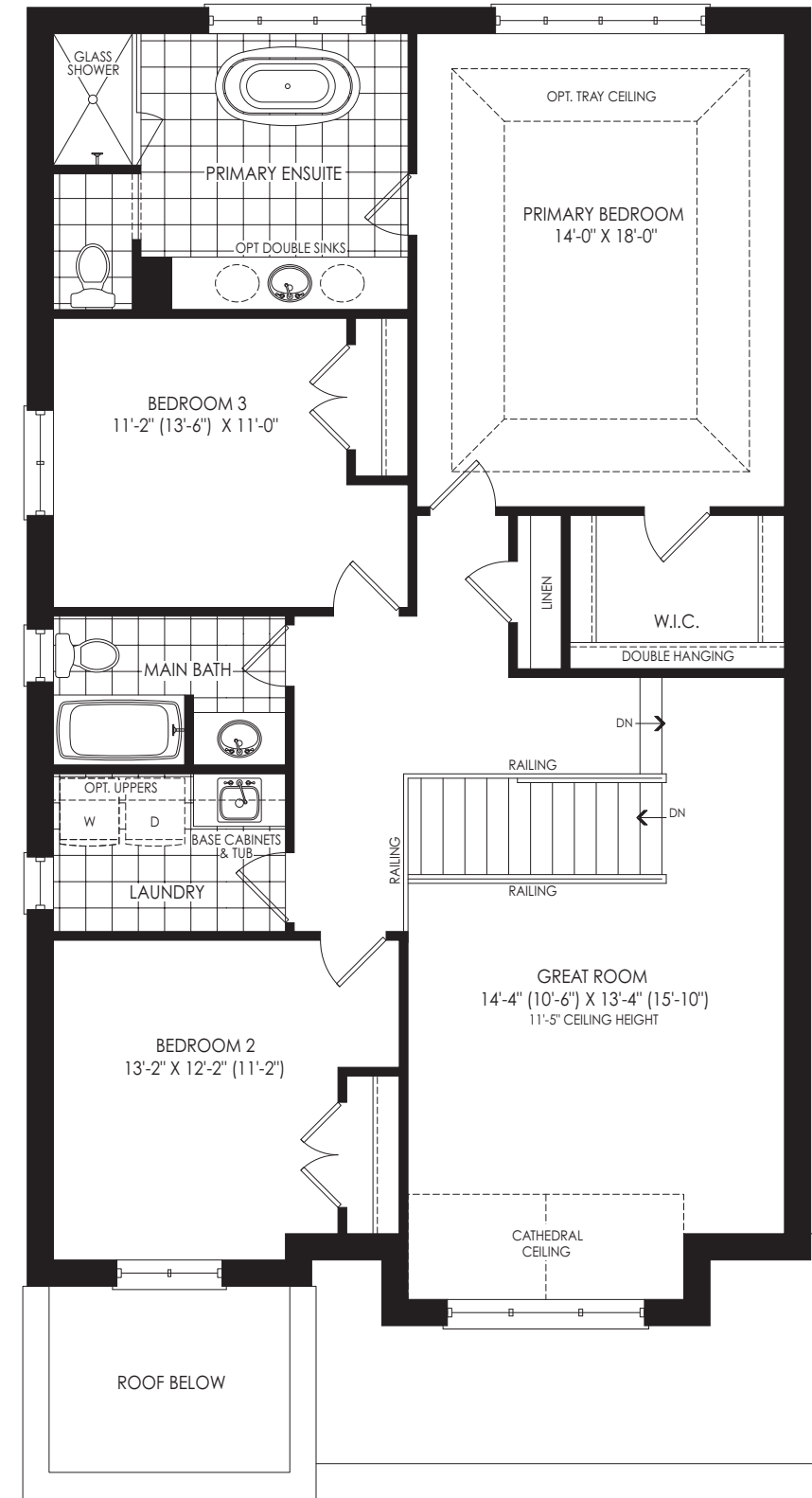
3 BEDROOMS
2 BATHROOMS + POWDER ROOM



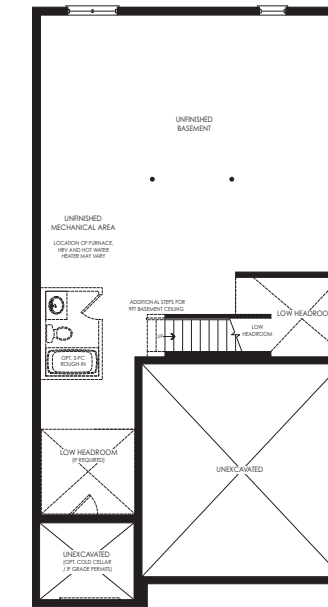
GROUND FLOOR PLAN ELEV. 'B'

ELEVATION A | MODERN
2,621 SQ.FT.

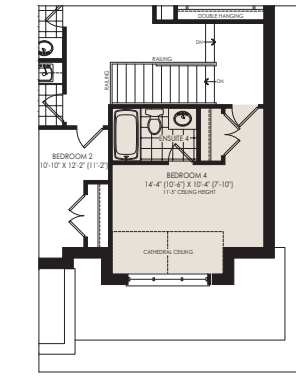
ELEVATION C | FRENCH COUNTRY
2,635 SQ.FT.



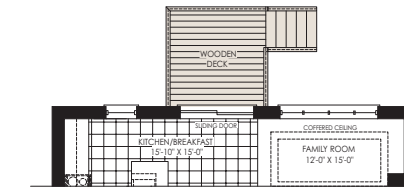
SECOND FLOOR PLAN ELEV. 'B'



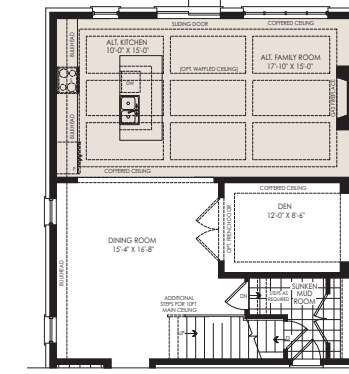
BASEMENT PLAN ELEV. 'B'



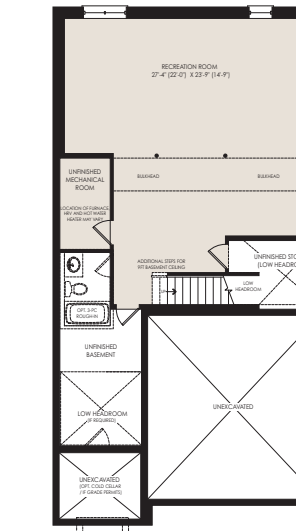
PARTIAL SECOND FLOOR PLAN
OPT. 4 BEDROOM ELEV. 'B'



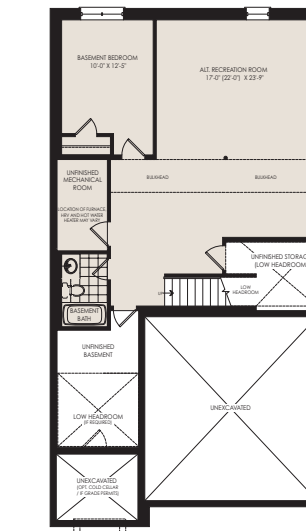
PARTIAL GROUND FLOOR ELEV. 'B'
LOOKOUT BASEMENT CONDITION



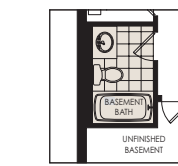
PARTIAL GROUND FLOOR PLAN
OPT. ALT. KITCHEN ELEV. 'B'



OPT. FINISHED BASEMENT PLAN
ELEV. 'B'



OPT. FINISHED BASEMENT PLAN
W/ BASEMENT BEDROOM
& BATHROOM ELEV. 'B'
(STANDARD BASEMENT
CEILING HEIGHT)



PARTIAL OPT. FINISHED
BASEMENT PLAN
W/ 3 PC. BATHROOM
ELEV. 'B'