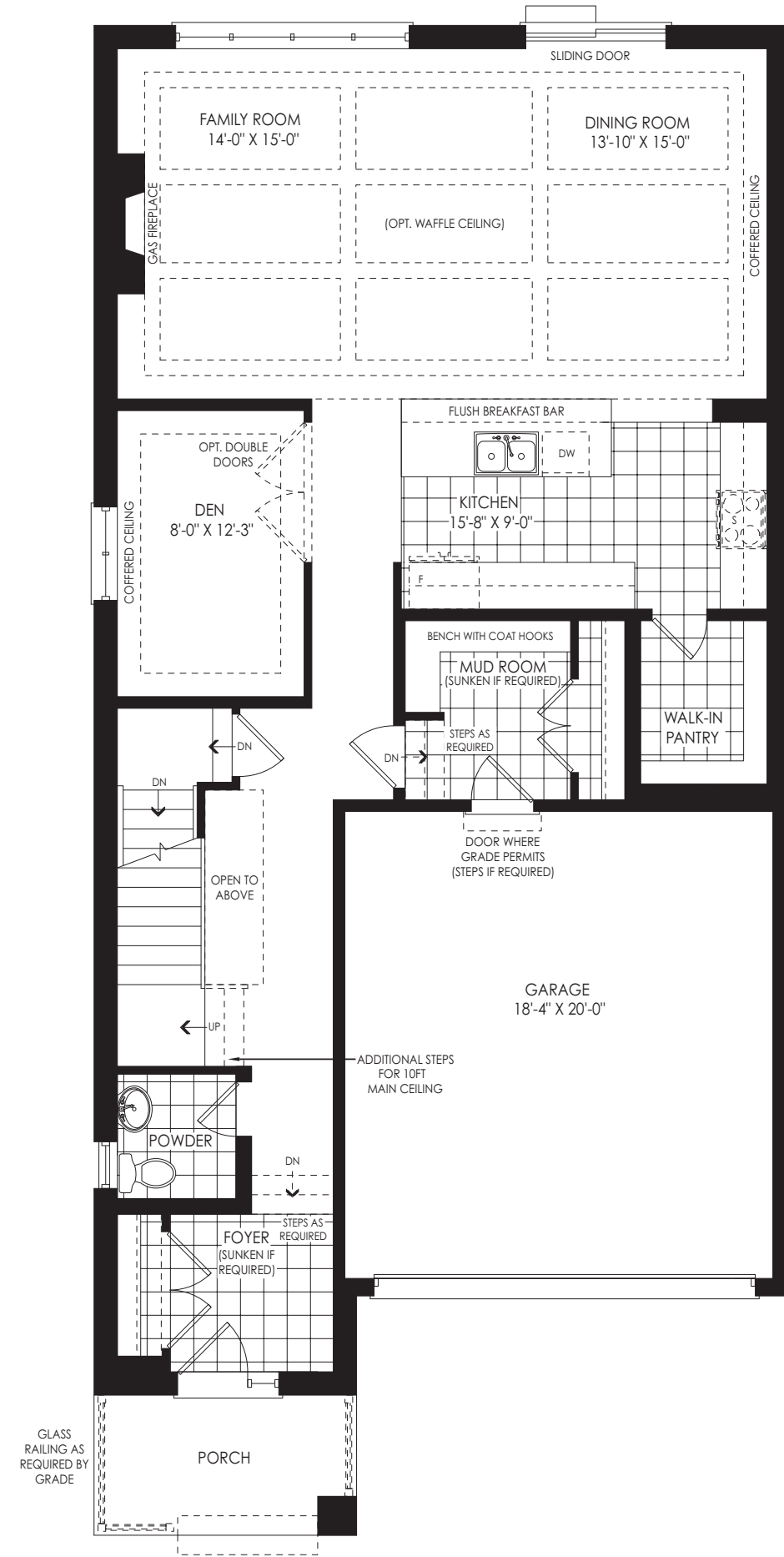


ELEVATION A | MODERN
2,903 SQ.FT.

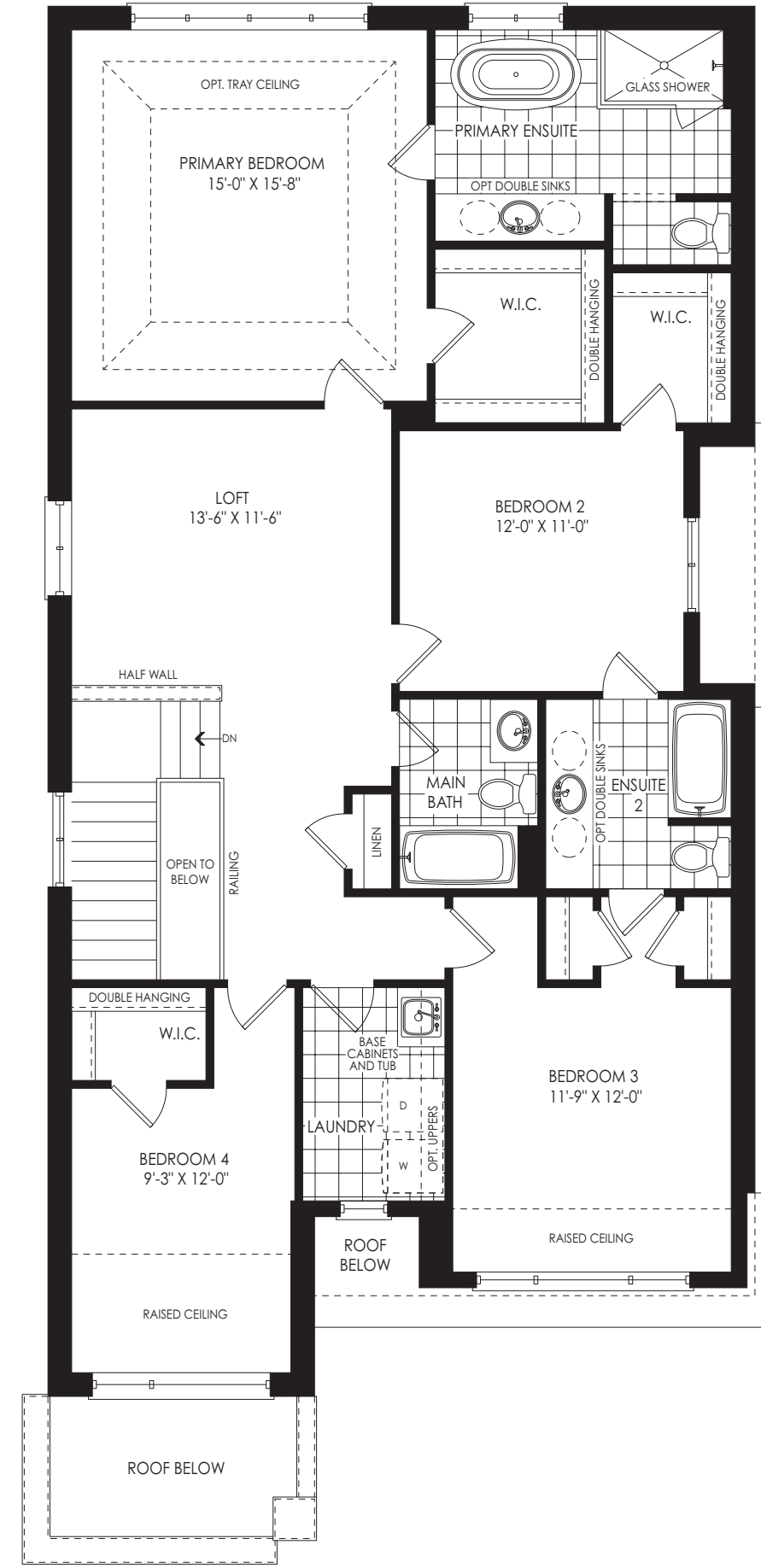
4 BEDROOMS
3 BATHROOMS + POWDER ROOM



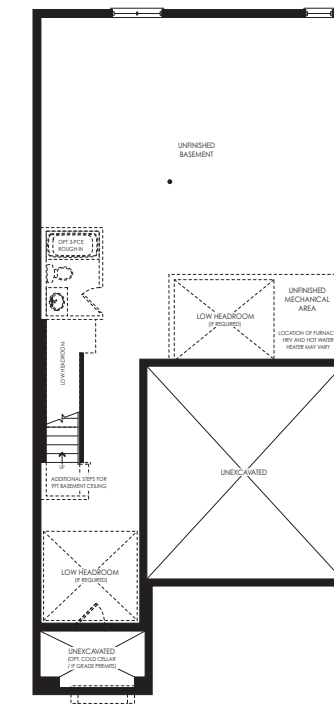
GROUND FLOOR PLAN ELEV. 'A'

ELEVATION B | ENGLISH MANOR
2,874 SQ.FT.

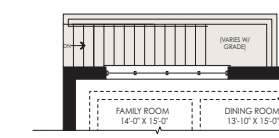
ELEVATION C | FRENCH COUNTRY
2,869 SQ.FT.



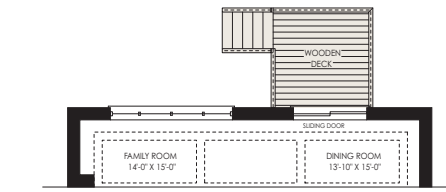
SECOND FLOOR PLAN ELEV. 'A'



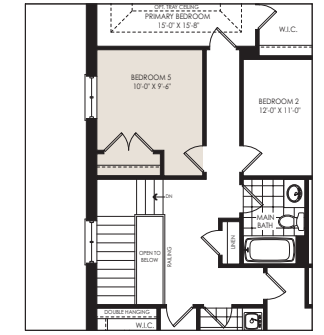
BASEMENT PLAN ELEV. 'A'



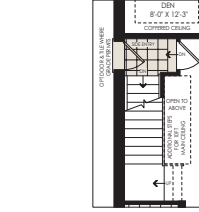
PARTIAL GROUND FLOOR FOR WALK-UP BASEMENT



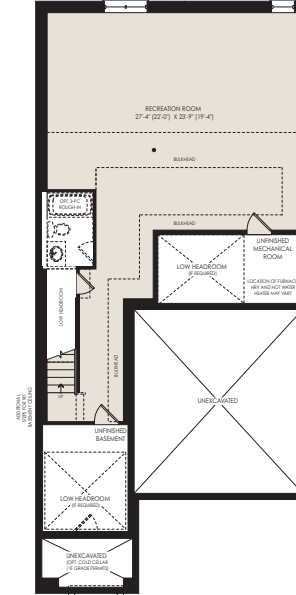
PARTIAL GROUND FLOOR ELEV. 'A' LOOKOUT BASEMENT CONDITION



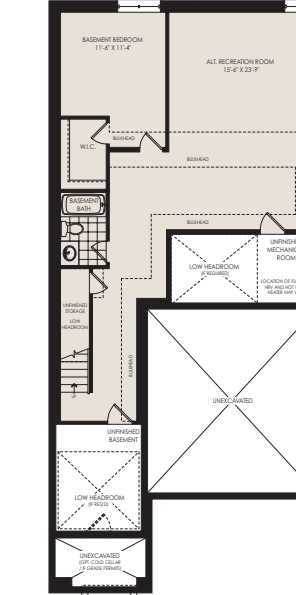
PARTIAL SECOND FLOOR PLAN OPT. 5 BEDROOM ELEV. 'A'



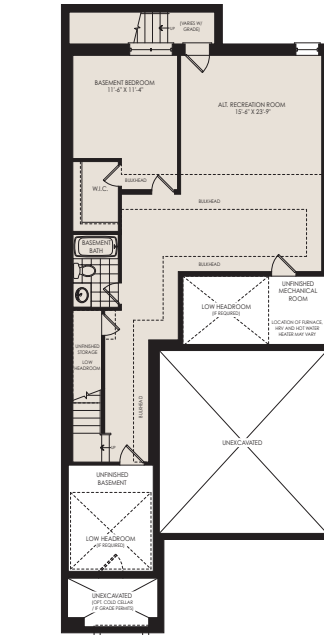
PARTIAL GROUND FLOOR OPT. SIDE DOOR ENTRY ELEV. 'A'



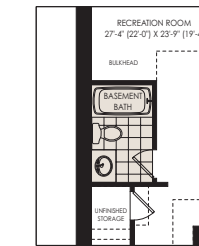
OPT. FINISHED BASEMENT PLAN ELEV. 'A'



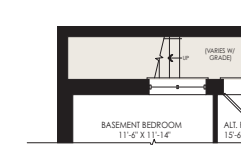
OPT. FINISHED BASEMENT PLAN W/ BASEMENT BEDROOM & BATHROOM ELEV. 'A' (STANDARD BASEMENT CEILING HEIGHT)



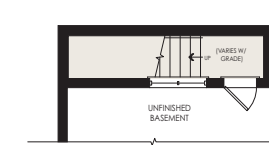
OPT. FIN. BASEMENT PLAN W/ BASEMENT BEDROOM, BATHROOM, WALK UP BASEMENT & OPT BASEMENT CEILING HEIGHT ELEV. 'A'



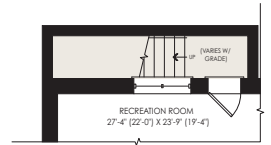
PARTIAL OPT. FINISHED BASEMENT PLAN W/ 3 PC. BATHROOM ELEV. 'A'



PARTIAL BASEMENT PLAN OPT. WALK-UP BASEMENT (FINISHED BASEMENT WITH BEDROOM & BATH CONDITION)



PARTIAL BASEMENT PLAN OPT. WALK-UP BASEMENT



PARTIAL BASEMENT PLAN OPT. WALK-UP BASEMENT (FINISHED BASEMENT CONDITION)

FLEX PLANS

All plans, dimensions and specifications are subject to change without notice. Actual usable floor space may vary from the stated floor area. Column locations, window locations and size may vary and are subject to change without notice. Renderings are artist's concept and will change if required by site conditions. Plans, specifications and materials are subject to availability, substitution, modification without notice at sole discretion of Minto Communities Inc. & Metropia, E. & O.E.

LINDEN 13

36' SINGLES