

A photograph of a woman with dark hair, smiling warmly while holding a young child. The child is wearing a pink dress with a colorful floral pattern. The woman is wearing a red top. In the foreground, there is a blurred green plant. A semi-transparent dark grey rectangle is overlaid on the left side of the image, containing the text "Executive Townhomes".

## Executive Townhomes





## Executive Townhome Collection

Step inside new 3-4 bedroom Executive Townhomes. Now offering Flex Plans with up to 6 bedrooms for multi-generational living. Choose from 11 unique designs featuring stunning exteriors, bright open-concept living spaces and large finished basements.





The Cohen



## Contemporary styles

Our open-concept Executive Townhomes are expertly crafted with 9 ft. ceilings on the main floor, and finished basements.

## Your home, your choice.

Your new Townhome brings the finest contemporary fixtures and finishes together to create luxurious living inside and out. With the help of our passionate and talented Design Centre experts, you can personalize these options to get the looks you've always wanted and create a space that's perfectly you.

Choose from a range of fixtures and finishes to match your style

Discover optional Flex Plans to personalize your layouts

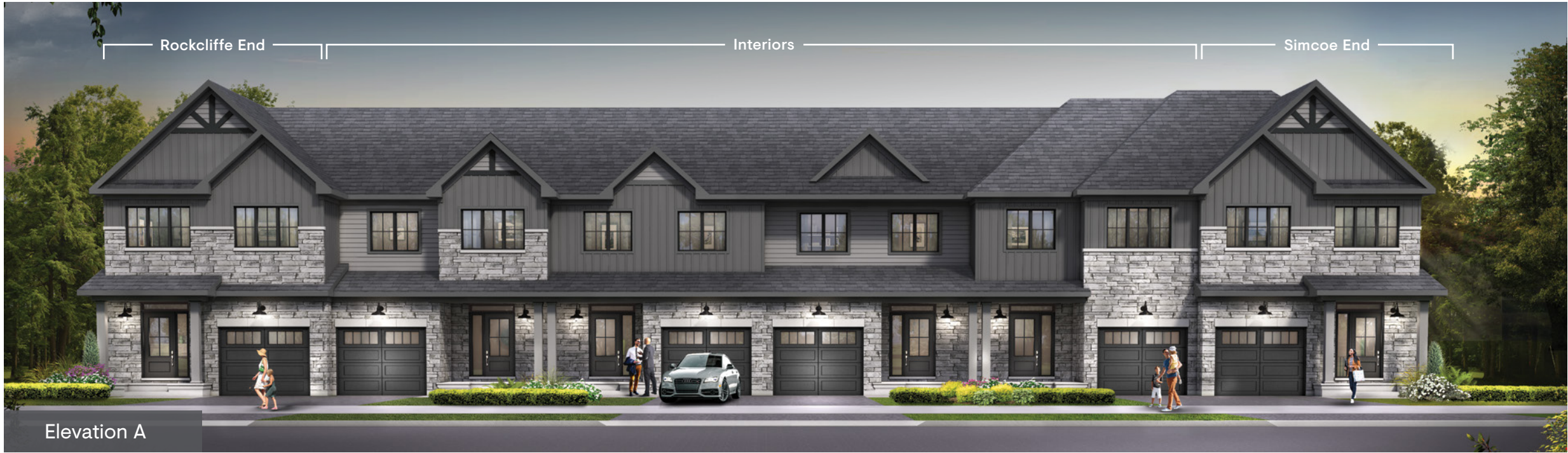
Explore additional investments to further tailor your home



## Live smarter

Track and control the comfort and performance of your home from a single, intuitive mobile app – whenever you want, wherever you are.



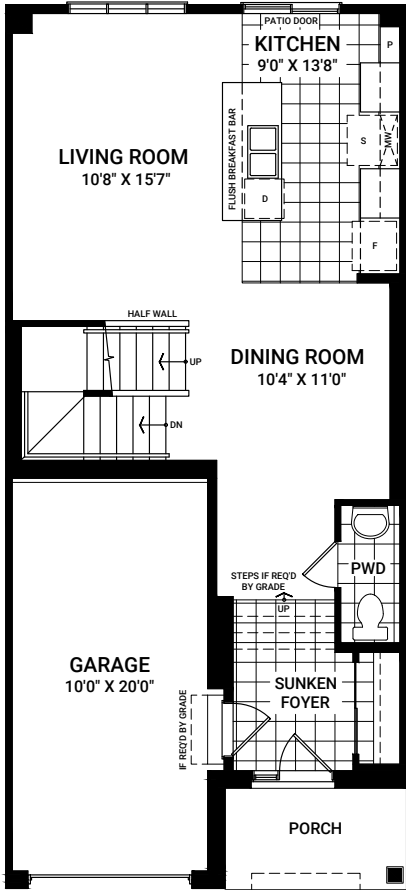




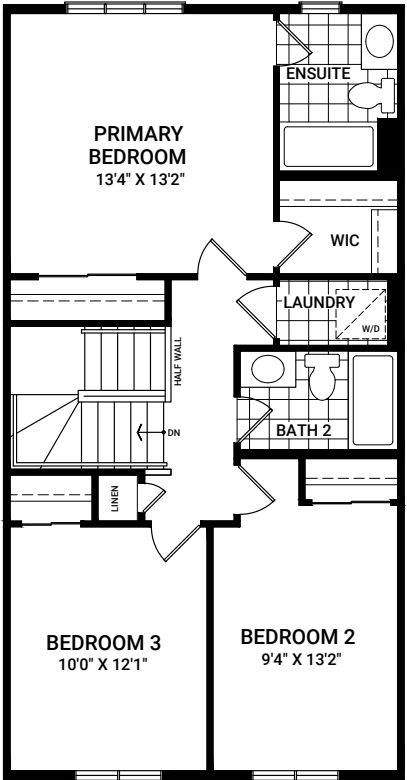
Ashbury

1,871 sq. ft.\* | Interior Only

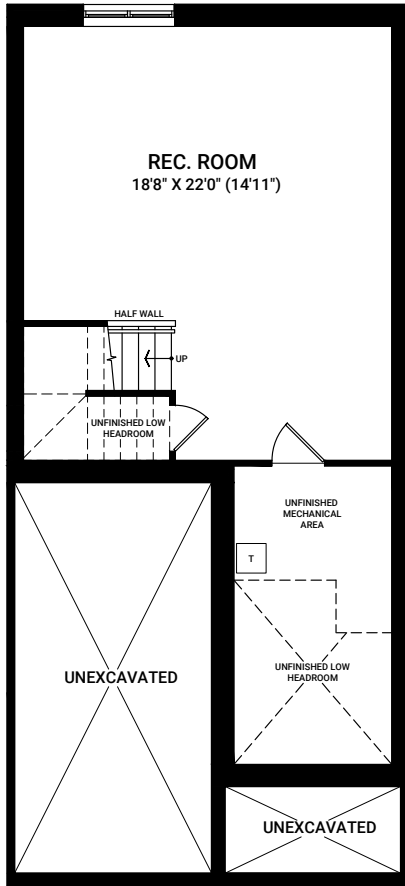
MAIN FLOOR



SECOND FLOOR



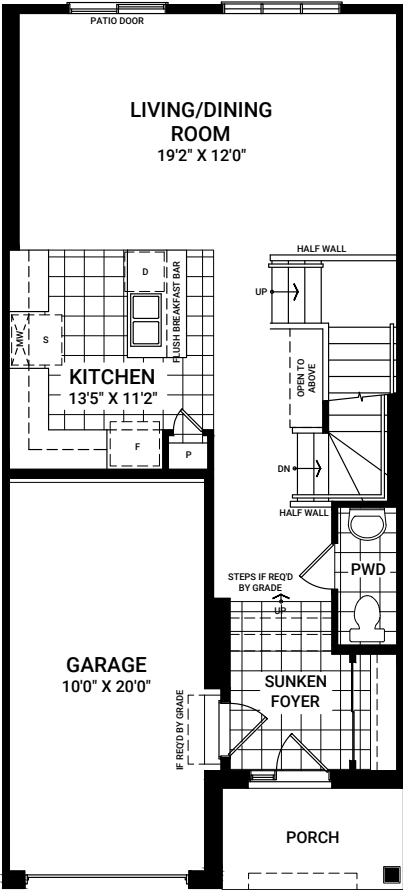
FINISHED BASEMENT



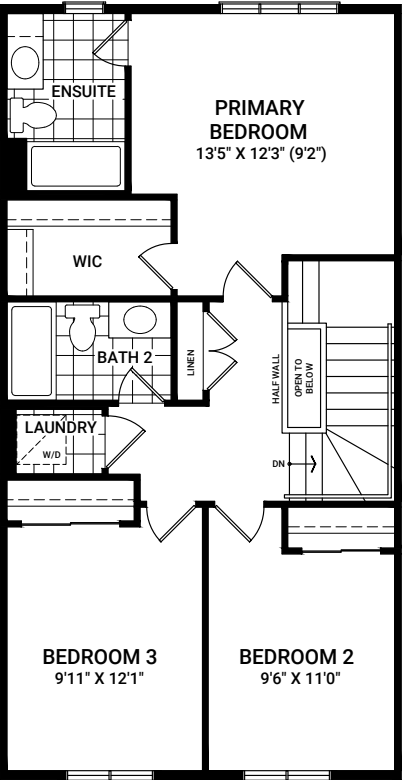
Cohen

1,900 sq. ft.\* | Interior Only

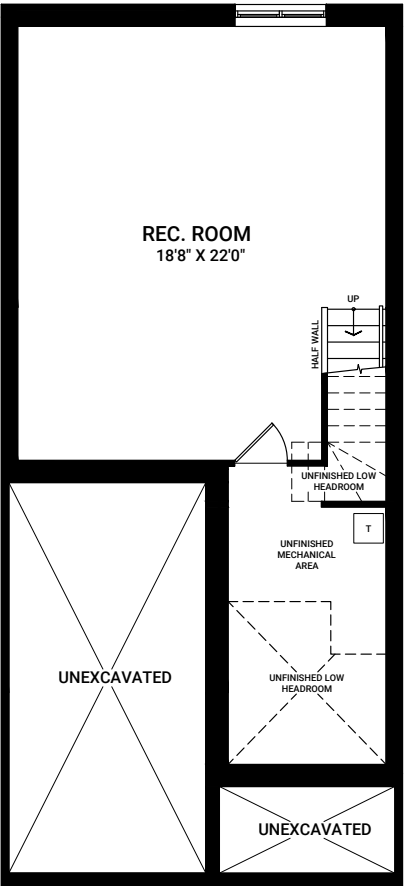
MAIN FLOOR



SECOND FLOOR

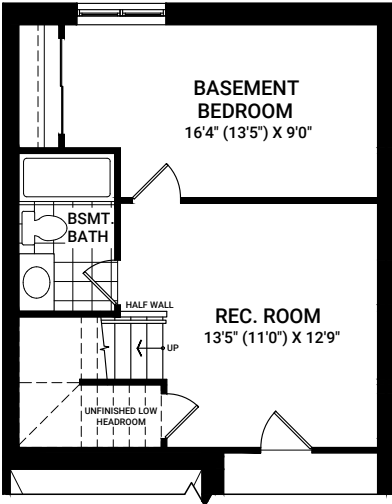


FINISHED BASEMENT

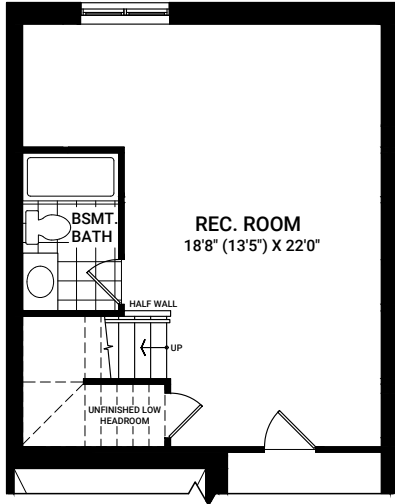


Flex Plans

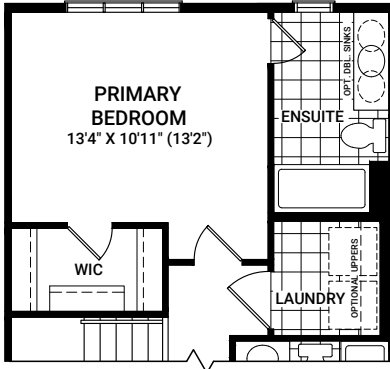
OPTIONAL BASEMENT  
BEDROOM & 3 PIECE BATH



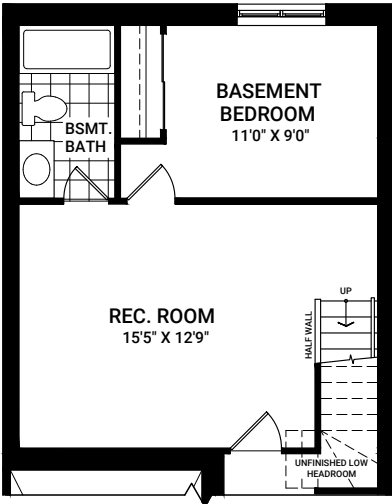
OPTIONAL BASEMENT &  
3 PIECE BATH



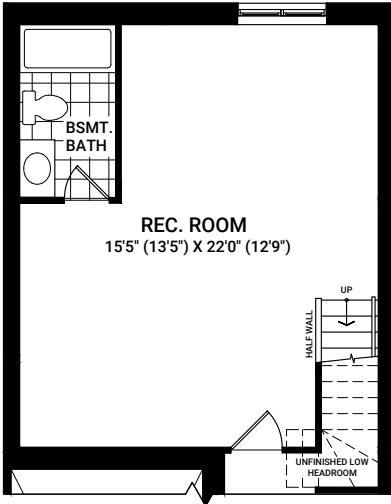
OPTIONAL PRIMARY BEDROOM  
LAYOUT A



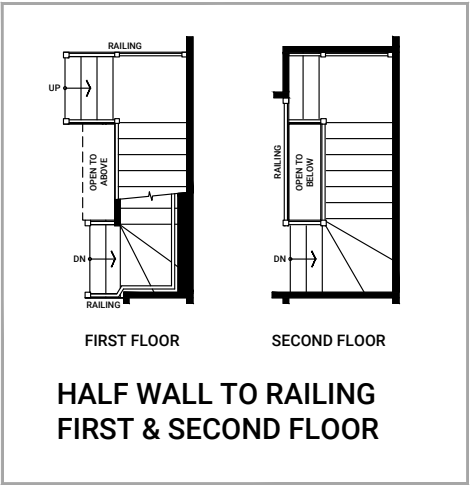
OPTIONAL BASEMENT  
BEDROOM & 3 PIECE BATH



OPTIONAL BASEMENT &  
3 PIECE BATH



STAIR OPTIONS



\*Based on Elevation B. Includes finished space in basement.

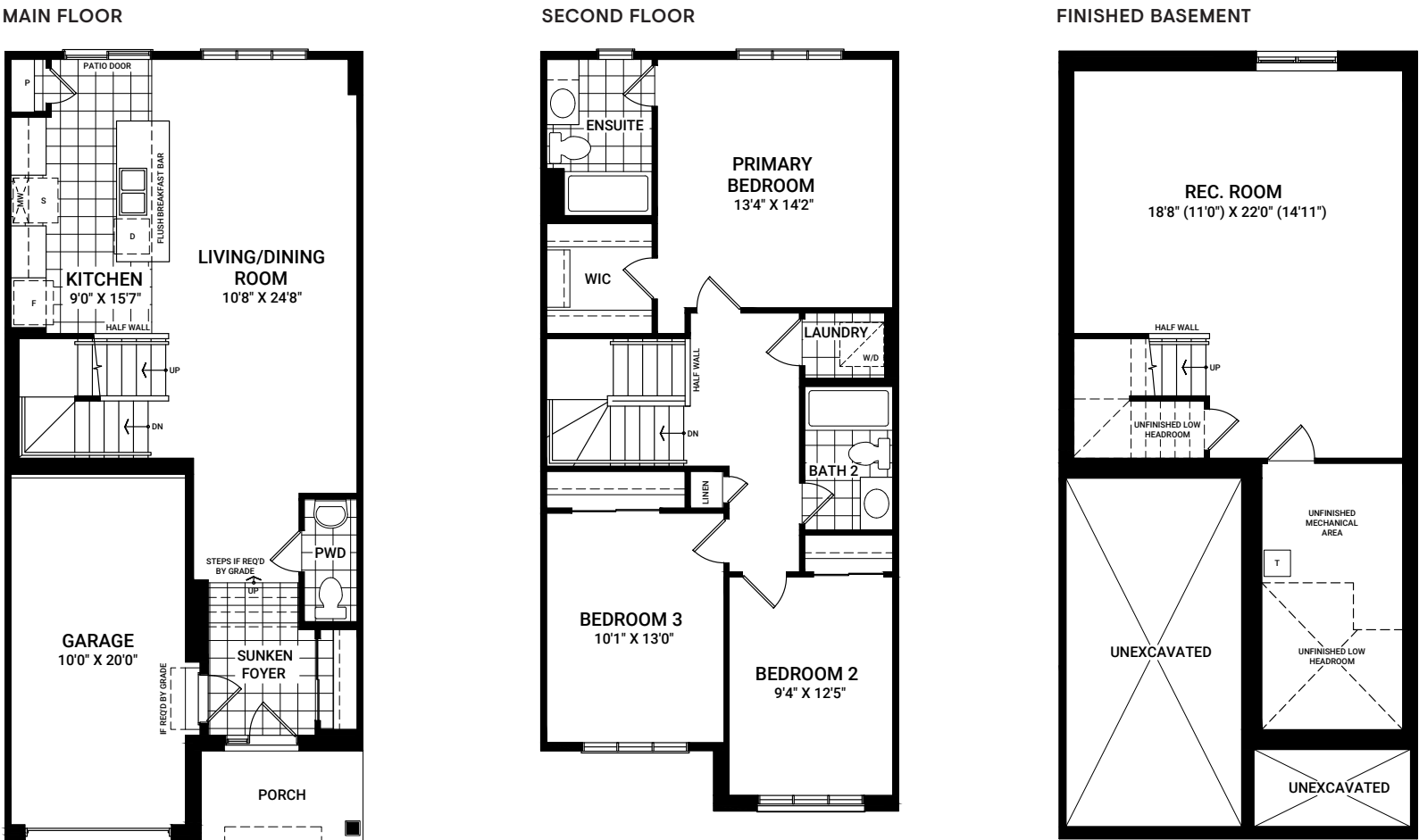
Flex plans are alternate layouts unique to each model, offered as part of our predetermined menu of additional investments. To learn what other options are available for your model or for more information, ask your Sales Representative. All plans, dimensions, and specifications are subject to change without notice. Actual usable floor space may vary from the stated floor area. Column locations, window locations, and sizes may vary and are subject to change without notice. Renderings are artist's concept only. E.&O.E. September 2023

\*Based on Elevation B. Includes finished space in basement.

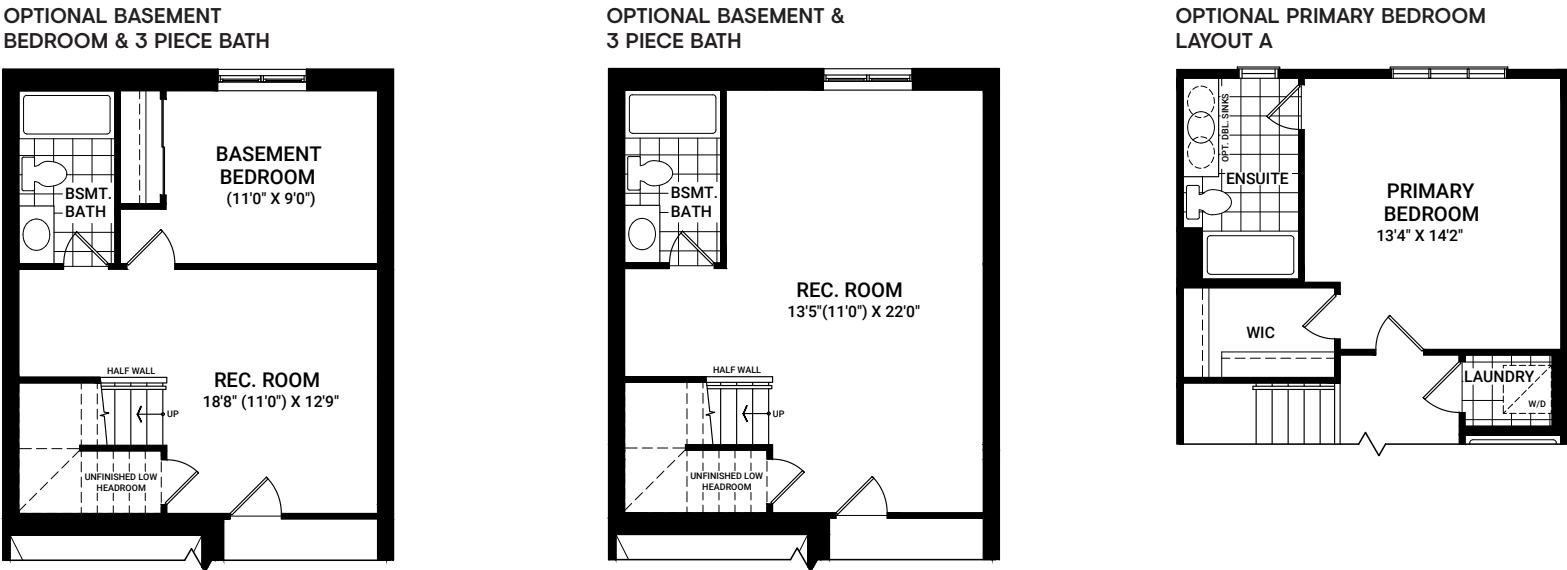
Flex plans are alternate layouts unique to each model, offered as part of our predetermined menu of additional investments. To learn what other options are available for your model or for more information, ask your Sales Representative. All plans, dimensions, and specifications are subject to change without notice. Actual usable floor space may vary from the stated floor area. Column locations, window locations, and sizes may vary and are subject to change without notice. Renderings are artist's concept only. E.&O.E. September 2023

Gladwell

1,907 sq. ft.\* | Interior Only



Flex Plans

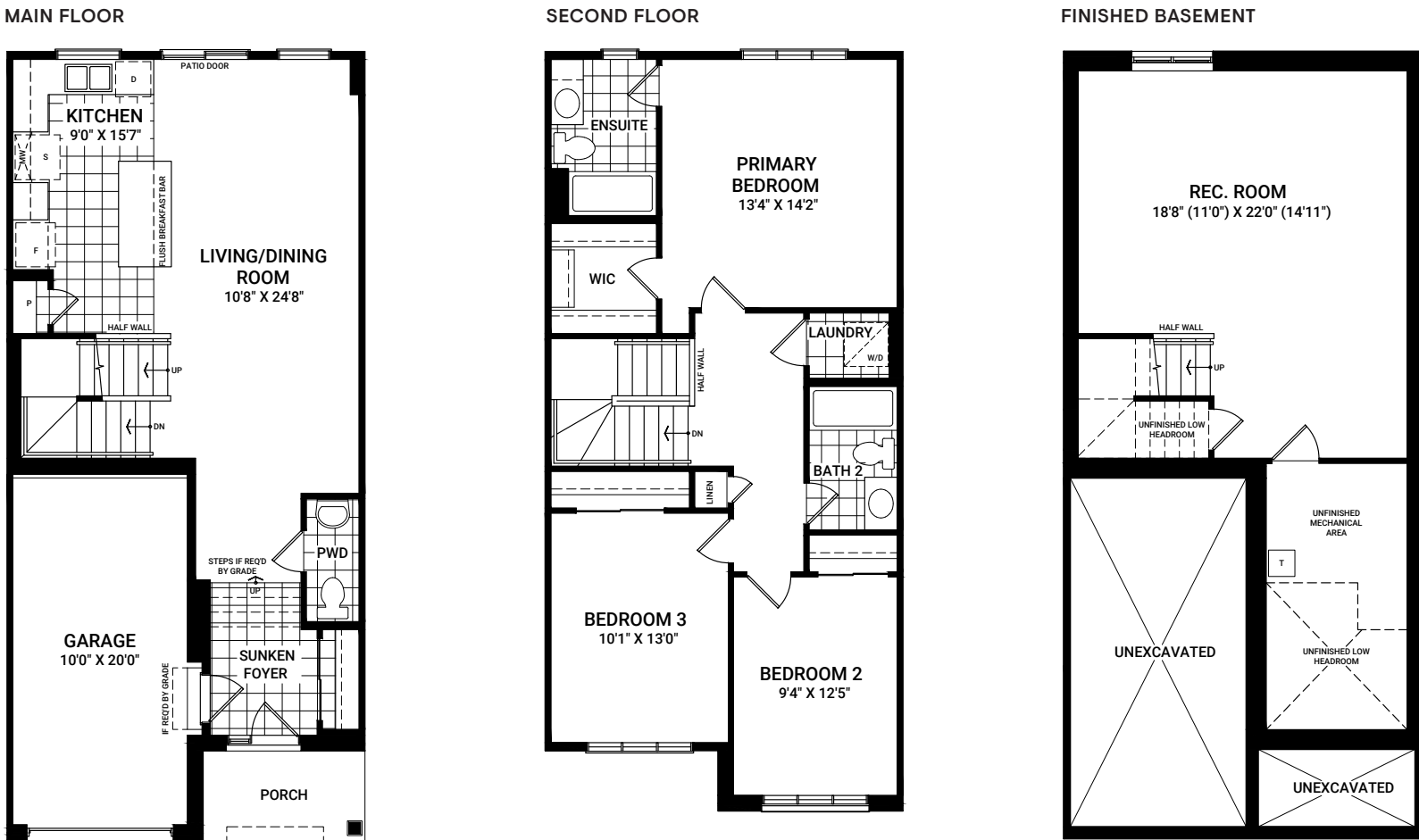


\*Based on Elevation B. Includes finished space in basement.

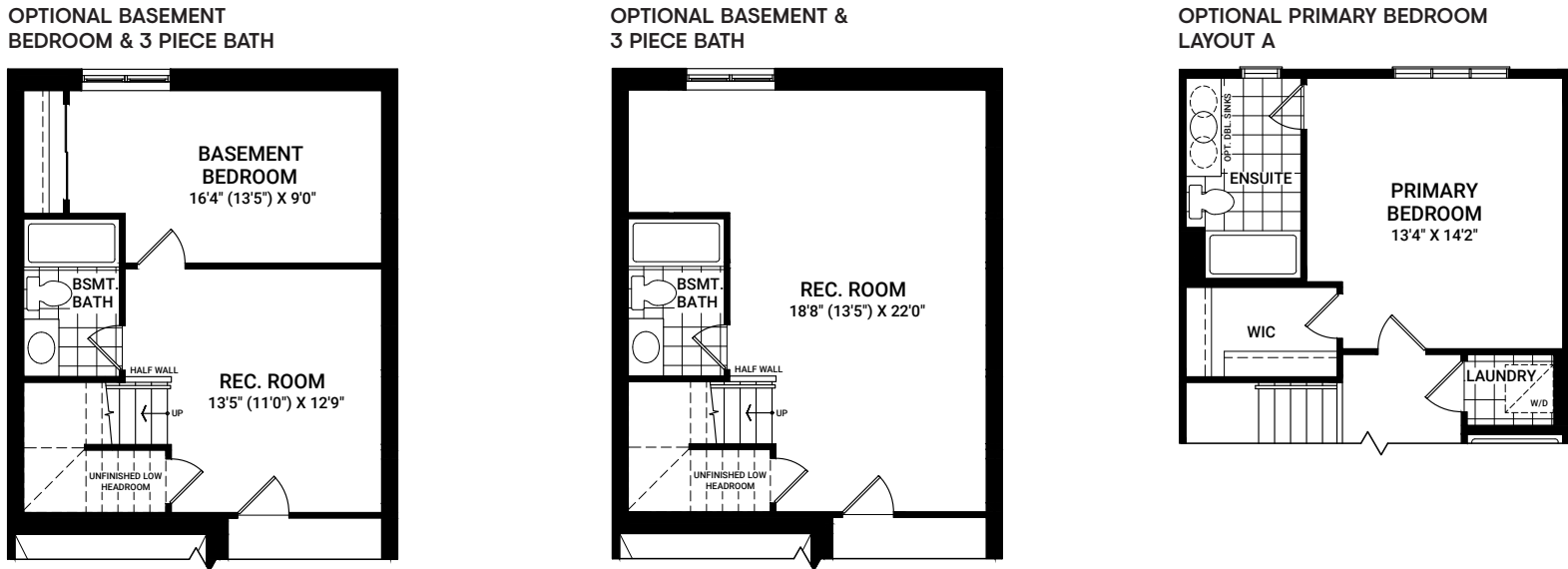
Flex plans are alternate layouts unique to each model, offered as part of our predetermined menu of additional investments. To learn what other options are available for your model or for more information, ask your Sales Representative. All plans, dimensions, and specifications are subject to change without notice. Actual usable floor space may vary from the stated floor area. Column locations, window locations, and sizes may vary and are subject to change without notice. Renderings are artist's concept only. E.&O.E. September 2023

Eagleridge

1,907 sq. ft.\* | Interior Only



Flex Plans



\*Based on Elevation B. Includes finished space in basement.

Flex plans are alternate layouts unique to each model, offered as part of our predetermined menu of additional investments. To learn what other options are available for your model or for more information, ask your Sales Representative. All plans, dimensions, and specifications are subject to change without notice. Actual usable floor space may vary from the stated floor area. Column locations, window locations, and sizes may vary and are subject to change without notice. Renderings are artist's concept only. E.&O.E. September 2023

1,955 sq. ft.\* | Interior Only

**LIVING/DINING ROOM**  
10'8" X 24'8"

**KITCHEN**  
9'0" X 15'7"

**GARAGE**  
10'0" X 20'0"

**SUNKEN FOYER**

**PWD**

**PORCH**

Labels and features include: PATIO DOOR, P, S, L, F, D, FLUSH BREAKFAST BAR, HALF WALL, UP, DN, STEPS IF RECD BY GRADE, IF RECD BY GRADE.

**BEDROOM 4**  
9'0" X 9'5"

**PRIMARY BEDROOM**  
10'5" X 14'9"

**BEDROOM 3**  
9'11" X 9'11"

**BEDROOM 2**  
9'6" X 10'4"

**LAUNDRY**  
W/D

**WIC**

**ENSUITE**  
OPT DRL SINSE

**BATH 2**

**LINEN**

**DN**

**HALF WALL**

**REC. ROOM**  
 18'8" (11'0") X 22'0" (14'11")

HALF WALL  
 UP  
 UNFINISHED LOW HEADROOM

UNEXCAVATED

UNFINISHED MECHANICAL AREA  
 T  
 UNEXCAVATED  
 UNFINISHED LOW HEADROOM

UNEXCAVATED

## 1,955 sq. ft.\* | Interior Only

**KITCHEN**  
9'0" X 15'7"

**LIVING/DINING ROOM**  
10'8" X 24'8"

**GARAGE**  
10'0" X 20'0"

**SUNKEN FOYER**

**PORCH**

Labels and features include: PATIO DOOR, D, S, F, P, FLUSH BREAKFAST BAR, HALF WALL, UP, DN, STEPS IF REQ'D BY GRADE, PWD, and IF REQ'D BY GRADE.

**BEDROOM 4**  
9'0" X 9'5"

**LAUNDRY**  
W/D

**BATH 2**

**BEDROOM 3**  
9'11" X 9'11"

**PRIMARY BEDROOM**  
10'5" X 14'9"

**WIC**

**ENSUITE**  
OPT DBL SINKS

**BEDROOM 2**  
9'6" X 10'4"

**HALF WALL**

**ON**

**LINEN**

**REC. ROOM**  
 18'8" (11'0") X 22'0" (14'11")

The plan shows a rectangular room with a staircase on the left side. The staircase has a "HALF WALL" and an "UP" arrow indicating the direction of travel. Below the staircase is an "UNFINISHED LOW HEADROOM" area. To the right of the staircase is a "T" (toilet) and an "UNFINISHED MECHANICAL AREA". Below the mechanical area is another "UNFINISHED LOW HEADROOM" area. The bottom-left and bottom-right portions of the room are marked "UNEXCAVATED" with large 'X' symbols.

## Flex Plans

**BASEMENT BEDROOM**  
(11'0" X 9'0")

**BSMT. BATH**

**REC. ROOM**  
18'8" (11'0") X 12'9"

**UNFINISHED LOW HEADROOM**

**HALF WALL**

**UP**

BSMT. BATH

REC. ROOM  
13'5"(11'0") X 22'0"

HALF WALL

UP

UNFINISHED LOW HEADROOM

**FIRST FLOOR**

**SECOND FLOOR**

**HALF WALL TO RAILING  
FIRST & SECOND FLOOR**

Basement floor plan showing the following rooms and dimensions:

- BASEMENT BEDROOM**: 164" (13'5") X 9'0"
- BSMT. BATH**: Includes a toilet, sink, and shower area.
- REC. ROOM**: 13'5" (11'0") X 12'9"
- UNFINISHED LOW HEADROOM**: Area indicated by dashed lines below the Rec. Room.
- HALF WALL**: Located between the BSMT. BATH and the REC. ROOM.
- UP**: Arrow indicating the staircase leading up from the basement.

**FIRST FLOOR**

**SECOND FLOOR**

## HALF WALL TO RAILING FIRST & SECOND FLOOR

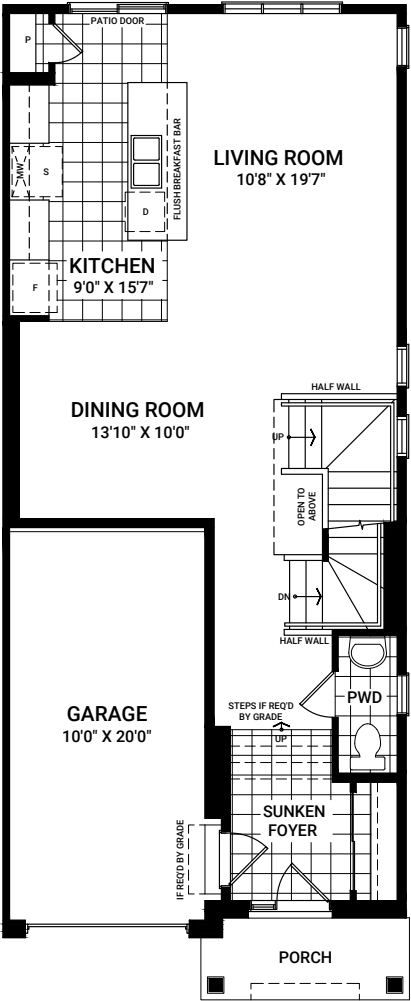
\*Based on Elevation B. Includes finished space in basement.

Flex plans are alternate layouts unique to each model, offered as part of our predetermined menu of additional investments. To learn what other options are available for your model or for more information, ask your Sales Representative. All plans, dimensions, and specifications are subject to change without notice. Actual usable floor space may vary from the stated floor area. Column locations, window locations, and sizes may vary and are subject to change without notice. Renderings are artist's concept only. E.&O.E. September 2023

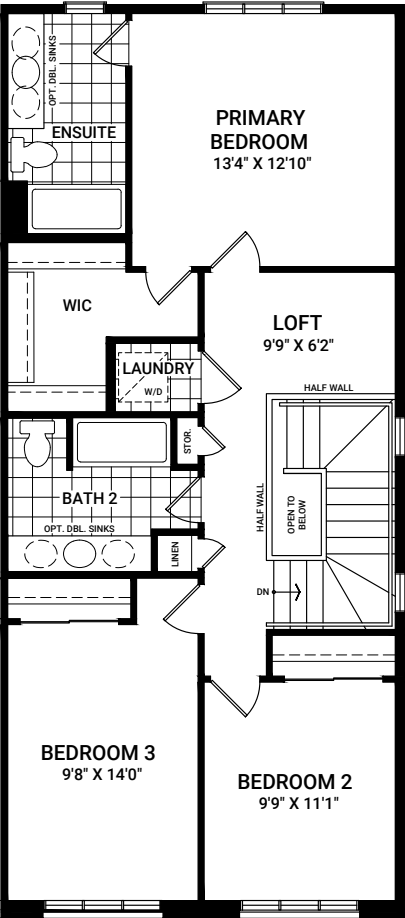
# Rockcliffe 3 Bedroom End

2,200 sq. ft.\* | End

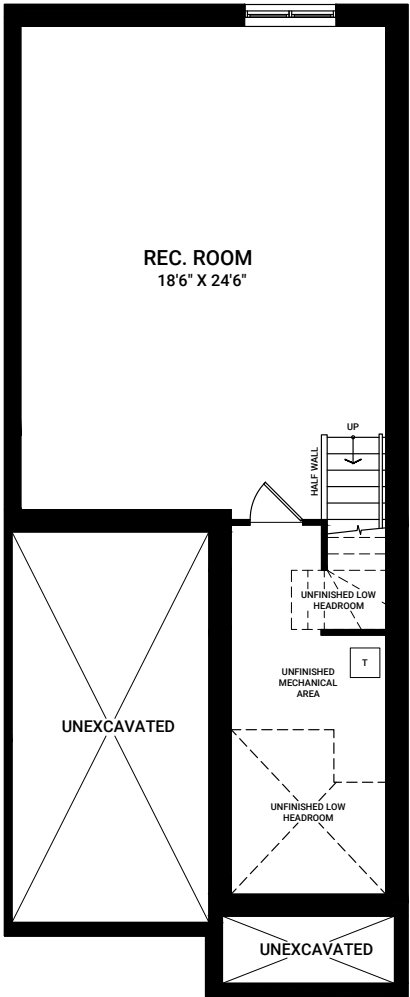
MAIN FLOOR



SECOND FLOOR

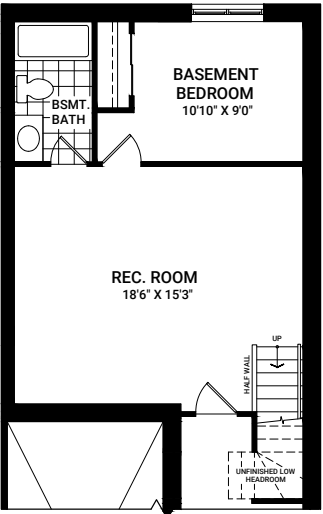


FINISHED BASEMENT

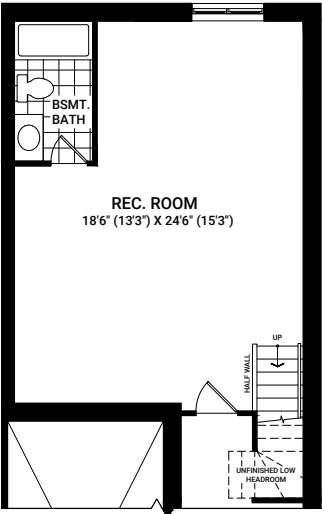


## Flex Plans

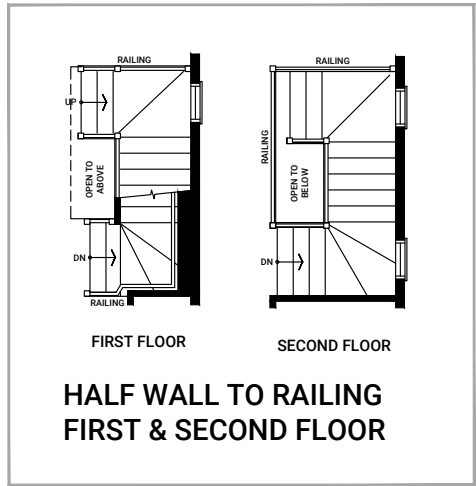
OPTIONAL BASEMENT  
BEDROOM & 3 PIECE BATH



OPTIONAL BASEMENT &  
3 PIECE BATH



STAIR OPTIONS



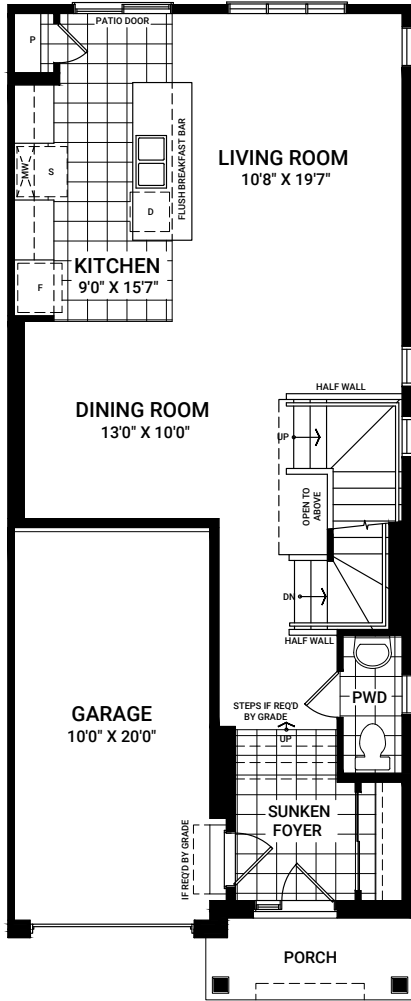
\*Based on Elevation B. Includes finished space in basement.

Flex plans are alternate layouts unique to each model, offered as part of our predetermined menu of additional investments. To learn what other options are available for your model or for more information, ask your Sales Representative. All plans, dimensions, and specifications are subject to change without notice. Actual usable floor space may vary from the stated floor area. Column locations, window locations, and sizes may vary and are subject to change without notice. Renderings are artist's concept only. E.&O.E. September 2023

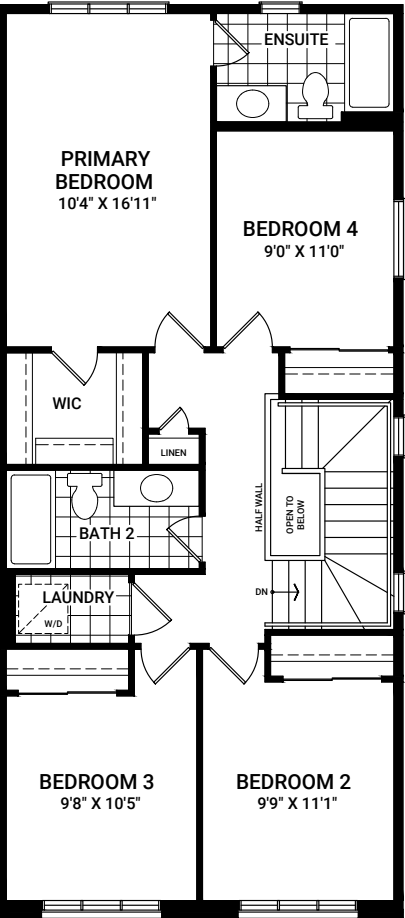
# Rockcliffe 4 Bedroom End

2,200 sq. ft.\* | End

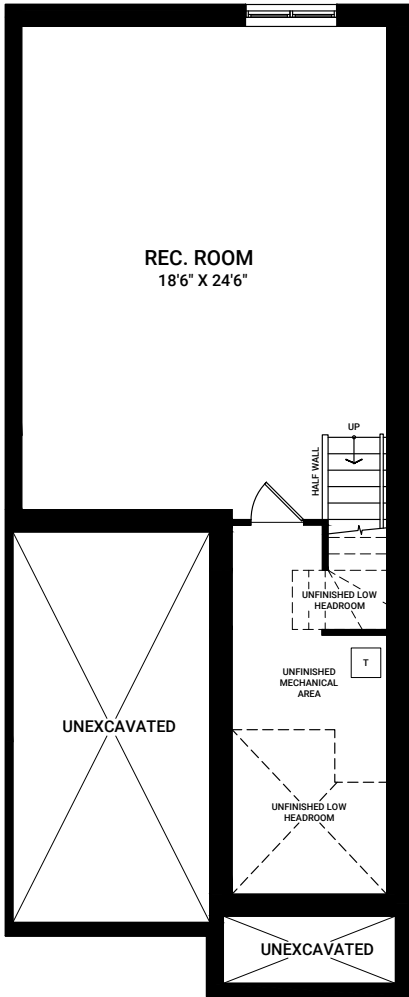
MAIN FLOOR



SECOND FLOOR

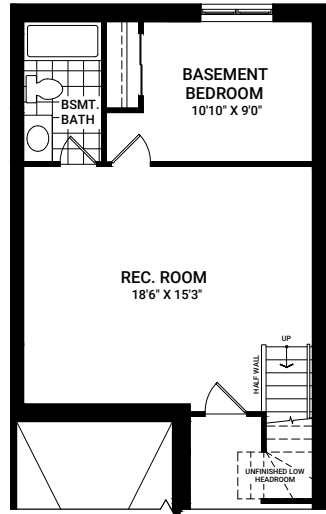


FINISHED BASEMENT

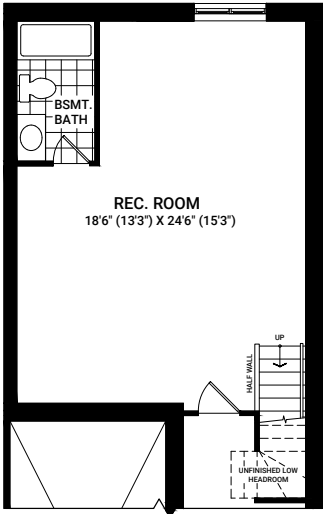


## Flex Plans

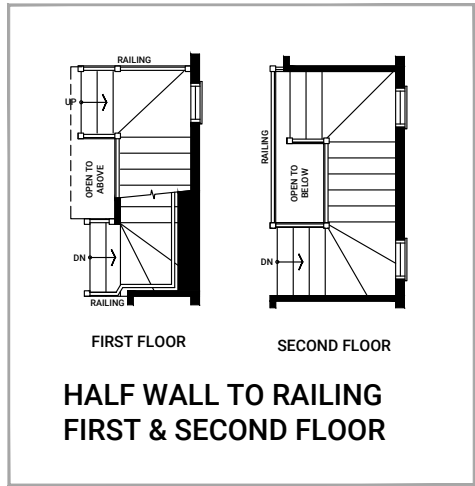
OPTIONAL BASEMENT  
BEDROOM & 3 PIECE BATH



OPTIONAL BASEMENT &  
3 PIECE BATH



STAIR OPTIONS



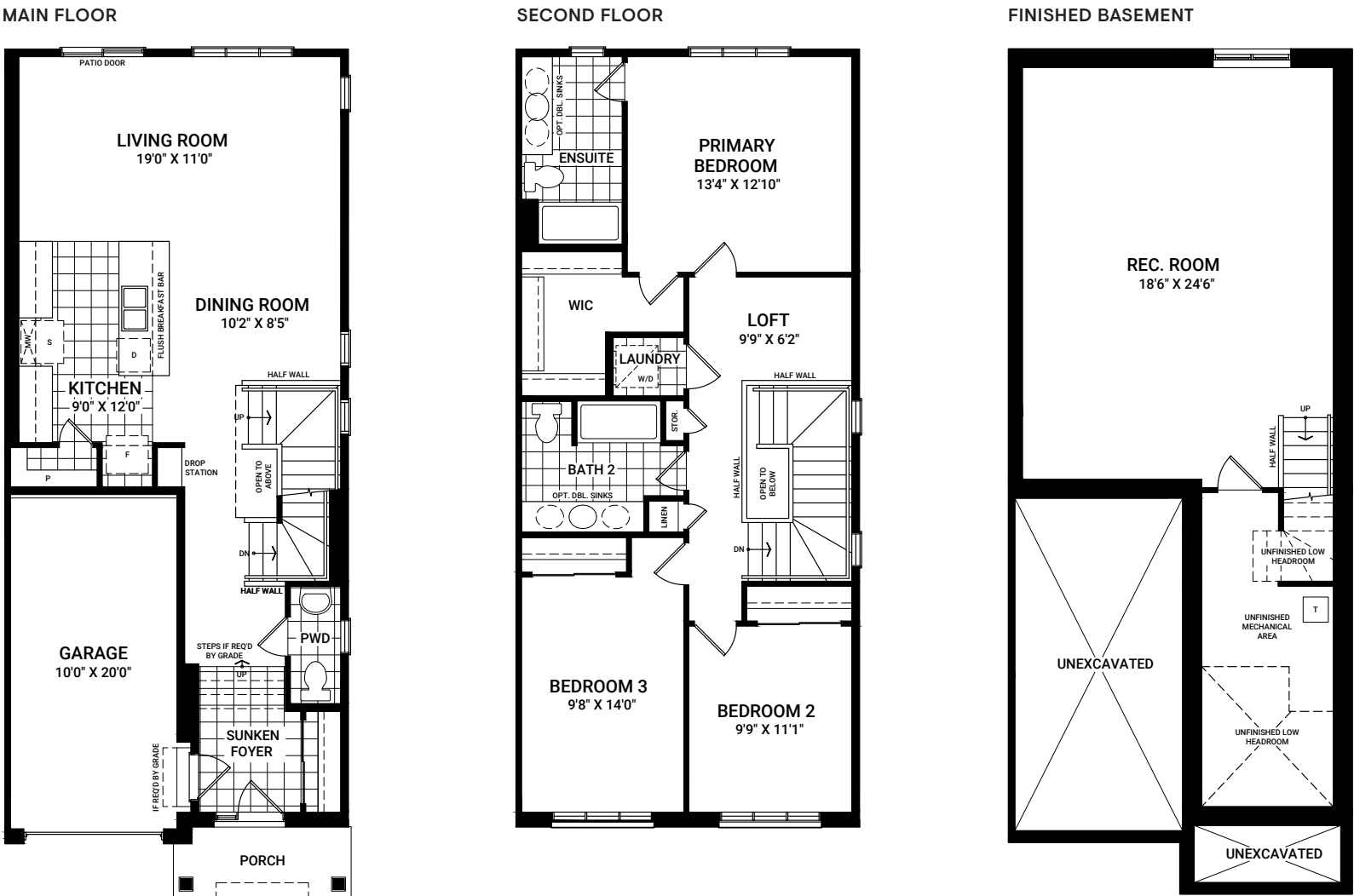
\*Based on Elevation B. Includes finished space in basement.

Flex plans are alternate layouts unique to each model, offered as part of our predetermined menu of additional investments. To learn what other options are available for your model or for more information, ask your Sales Representative. All plans, dimensions, and specifications are subject to change without notice. Actual usable floor space may vary from the stated floor area. Column locations, window locations, and sizes may vary and are subject to change without notice. Renderings are artist's concept only. E.&O.E. September 2023

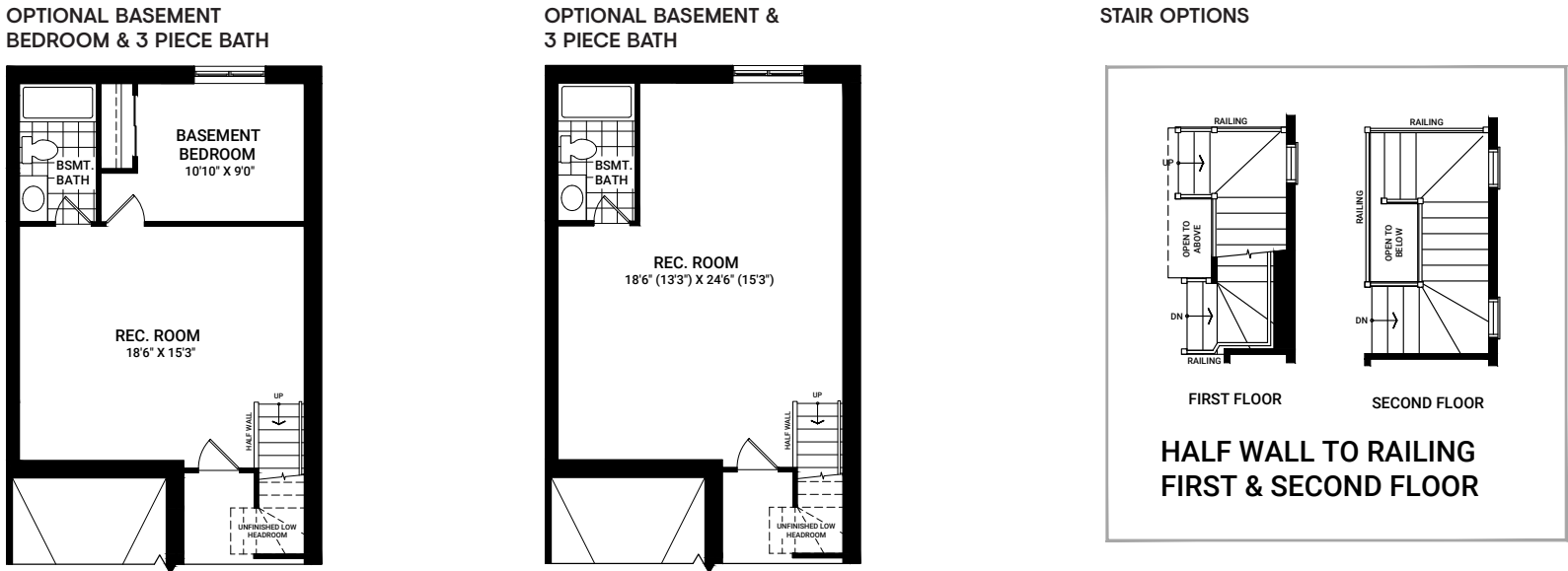


Simcoe 3 Bedroom End

2,200 sq. ft.\* | End



Flex Plans

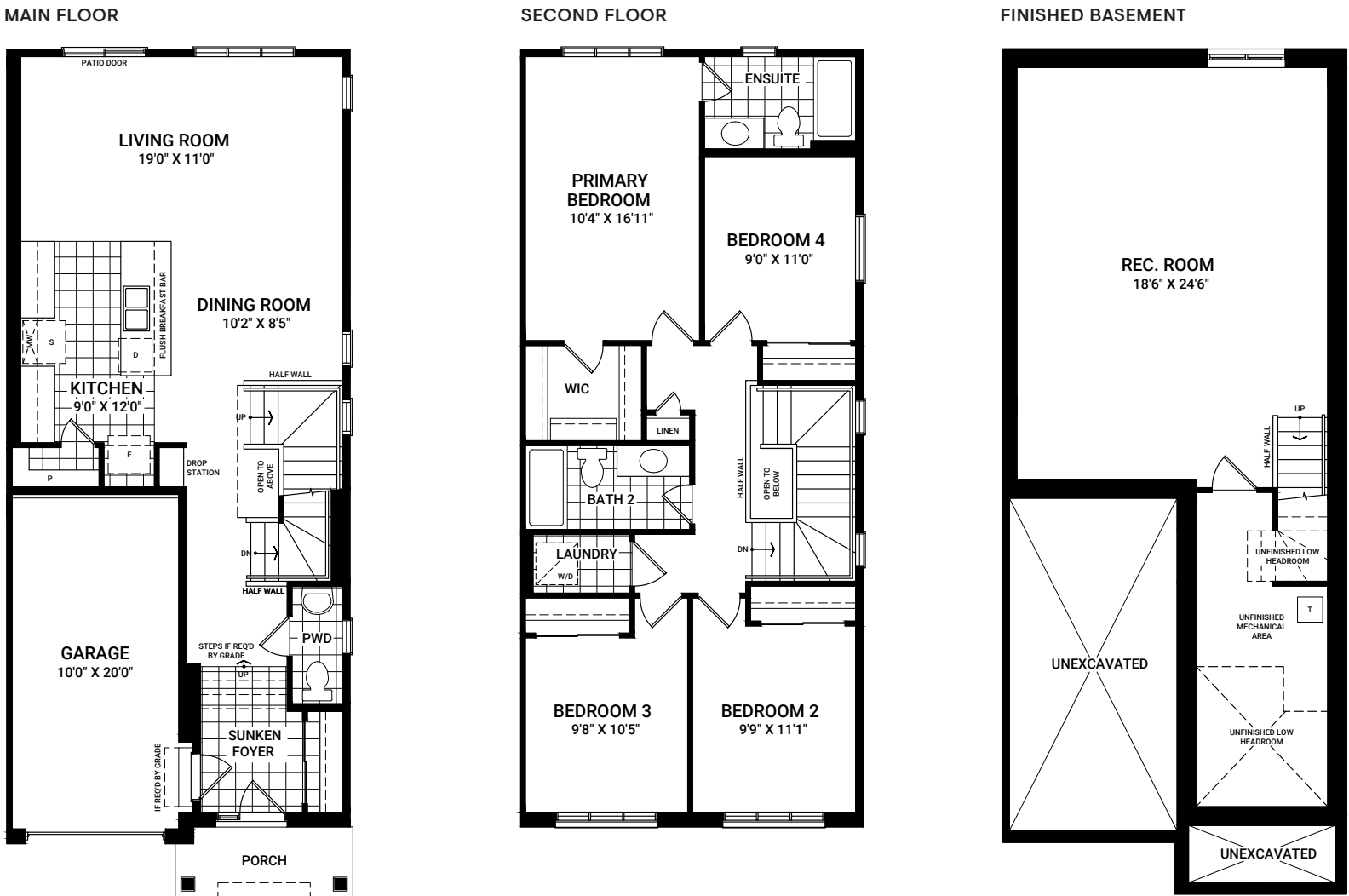


\*Based on Elevation B. Includes finished space in basement.

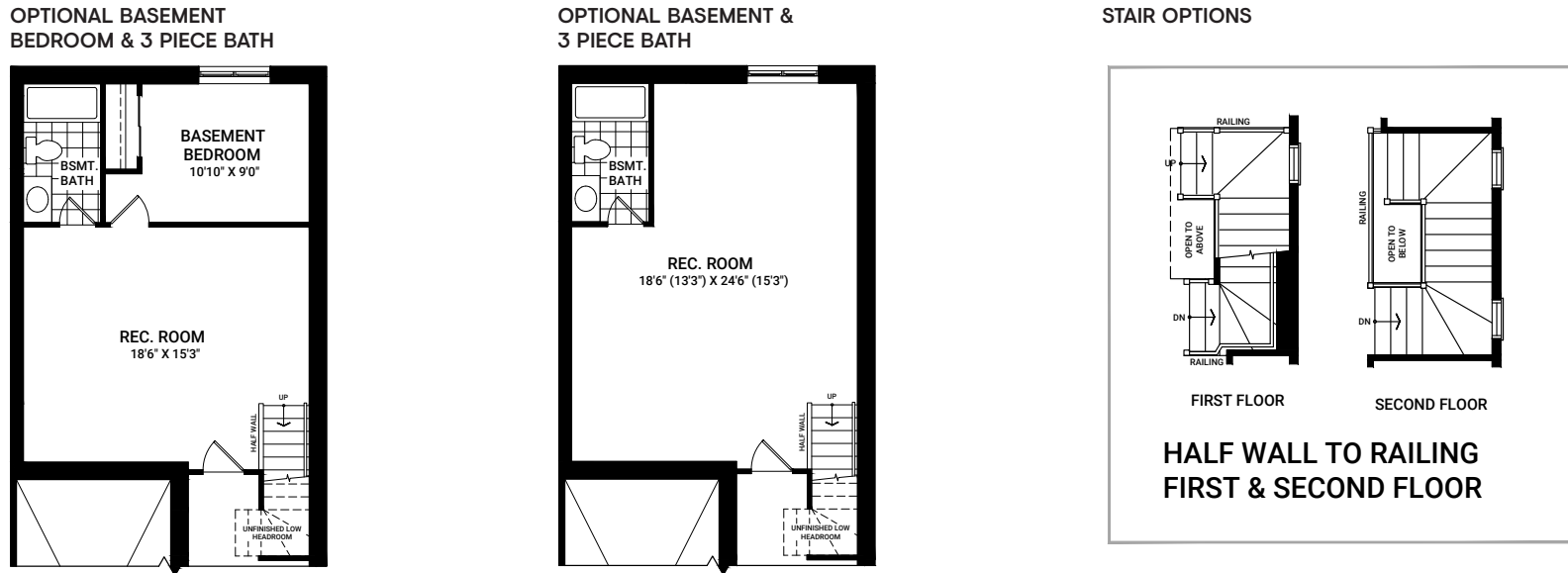
Flex plans are alternate layouts unique to each model, offered as part of our predetermined menu of additional investments. To learn what other options are available for your model or for more information, ask your Sales Representative. All plans, dimensions, and specifications are subject to change without notice. Actual usable floor space may vary from the stated floor area. Column locations, window locations, and sizes may vary and are subject to change without notice. Renderings are artist's concept only. E.&O.E. September 2023

Simcoe 4 Bedroom End

2,200 sq. ft.\* | End



Flex Plans



\*Based on Elevation B. Includes finished space in basement.

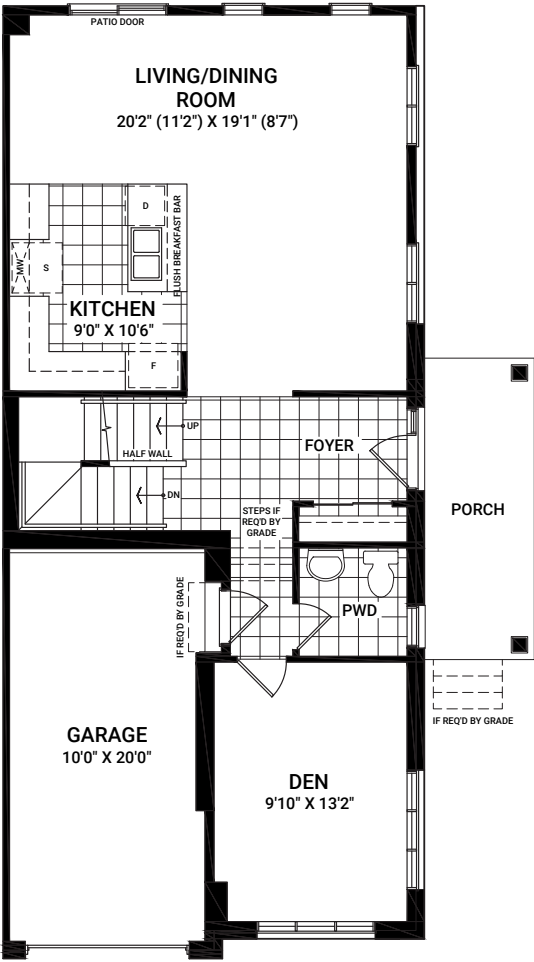
Flex plans are alternate layouts unique to each model, offered as part of our predetermined menu of additional investments. To learn what other options are available for your model or for more information, ask your Sales Representative. All plans, dimensions, and specifications are subject to change without notice. Actual usable floor space may vary from the stated floor area. Column locations, window locations, and sizes may vary and are subject to change without notice. Renderings are artist's concept only. E.&O.E. September 2023



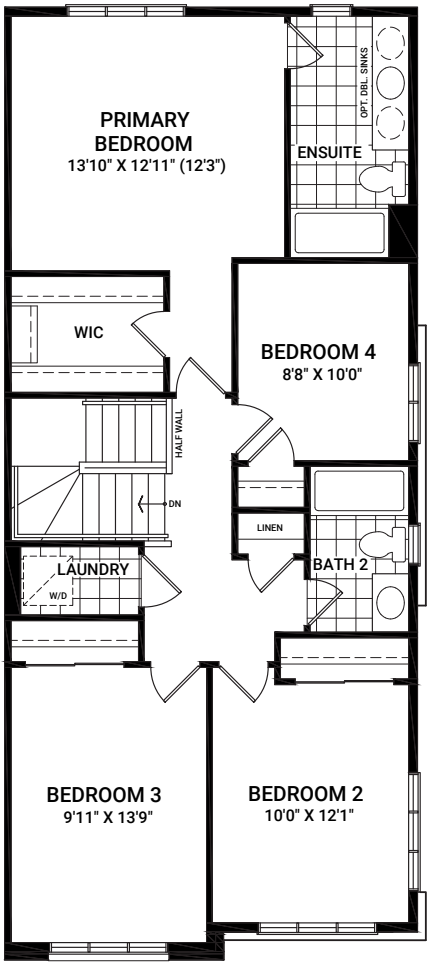
# Wynwood Corner

2,300 sq. ft.\* | Corner Only

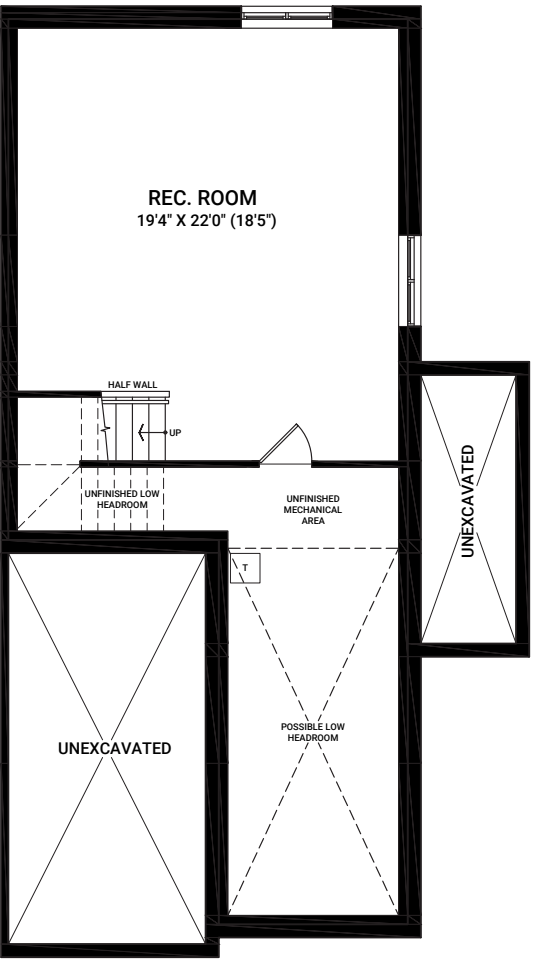
MAIN FLOOR



SECOND FLOOR

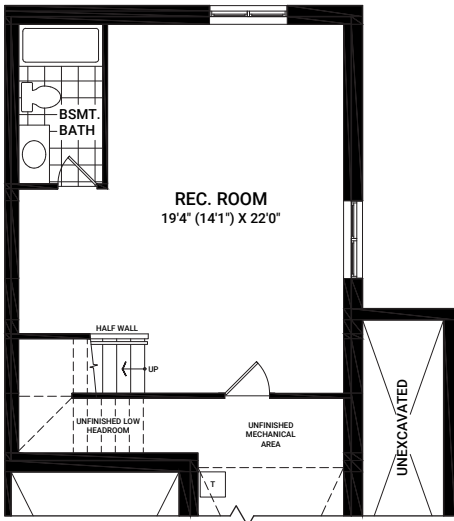


FINISHED BASEMENT

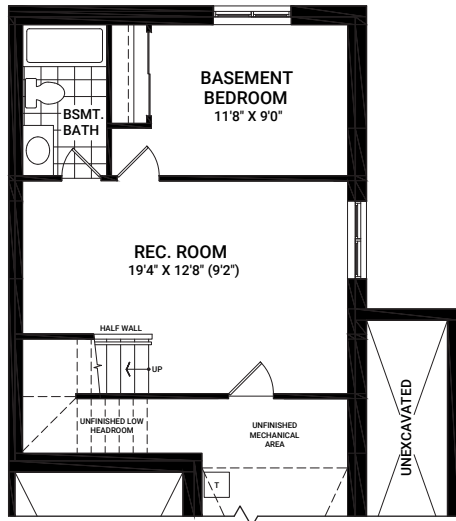


## Flex Plans

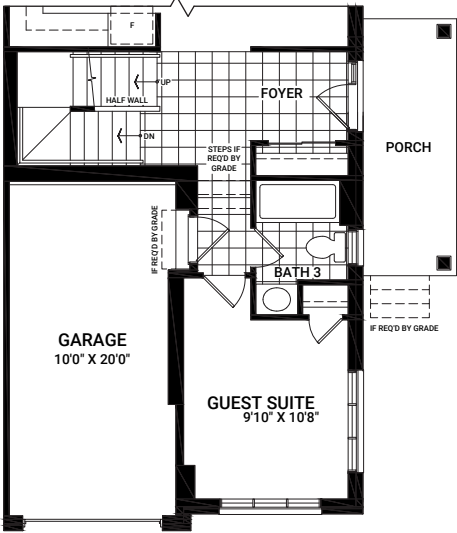
OPTIONAL BASEMENT BEDROOM & 3 PIECE BATH



OPTIONAL BASEMENT & 3 PIECE BATH



OPTIONAL MAIN FLOOR LAYOUT A



\*Based on Elevation B. Includes finished space in basement.

Flex plans are alternate layouts unique to each model, offered as part of our predetermined menu of additional investments. To learn what other options are available for your model or for more information, ask your Sales Representative. All plans, dimensions, and specifications are subject to change without notice. Actual usable floor space may vary from the stated floor area. Column locations, window locations, and sizes may vary and are subject to change without notice. Renderings are artist's concept only. E.&O.E. September 2023







[ottawahomes.minto.com](https://ottawahomes.minto.com)