



Haven

Executive Townhome

HARMONY
BARRHAVEN

QUINN'S POINTE
BARRHAVEN

Modern and comfortable, the 3-bedroom Haven is full of light and space for entertaining. Host guests in the separate dining room and continue the party in the finished basement. Executive Townhomes come with finished basements and 9' smooth ceilings on the main floor.

The following items in the Haven Model Home are available as additional investments through the Minto Design Centre:

- | | | |
|---|---|---|
| <p>Foyer</p> <ul style="list-style-type: none"> Sliding slab closet doors <p>Powder Room</p> <ul style="list-style-type: none"> Vanity in lieu of pedestal sink Designer selected quartz countertop <p>Dining Room/Living Room</p> <ul style="list-style-type: none"> Television package including additional electrical outlet with conduit to telephone/cable outlet in room Additional data network plug <p>Kitchen</p> <ul style="list-style-type: none"> Optional kitchen layout A Under cabinet puck lighting including double shelf inside cabinetry and low voltage switch Designer selected undermount sink Designer selected faucet Pot and pan drawers Capped outlets above island for future pendants with additional switch 2 separate cabinetry selections Fridge water line rough in <p>Family Room</p> <ul style="list-style-type: none"> Television package including additional electrical outlet on wall with conduit to telephone/cable outlet in room Additional data network plug on wall Designer selected floating floor | <p>Master Bedroom</p> <ul style="list-style-type: none"> Television package including additional electrical outlet on wall with conduit to telephone/cable outlet in room Additional data network plug on wall <p>Bed #2</p> <ul style="list-style-type: none"> Sliding slab closet doors <p>Bed #3</p> <ul style="list-style-type: none"> Sliding slab closet doors <p>Ensuite Bathroom</p> <ul style="list-style-type: none"> LED shower pot light Designer selected shower door with black trim 5' shower with ceramic tile base in lieu of bathtub <p>Bath #2</p> <ul style="list-style-type: none"> LED shower pot light <p>Home Technology</p> <ul style="list-style-type: none"> Speakers Audio system CAT-6 network plugs <p>Mechanical</p> <ul style="list-style-type: none"> Central air conditioning <p>Exterior</p> <ul style="list-style-type: none"> Designer selected front door hardware | <p>Throughout</p> <ul style="list-style-type: none"> Designer selected tile Designer selected hardwood flooring Design selected carpet and underpad Designer selected kitchen and bathroom cabinetry Soft close technology on all cabinetry Soft close hardware on cabinetry drawers and doors Designer selected quartz countertops Designer selected bathroom sinks Designer selected faucets LED pot lights Designer selected interior door hardware, and interior door style <p>Other Areas</p> <ul style="list-style-type: none"> Central vac completion in garage Smooth ceilings on second floor & basement Maple main staircase with stainless steel spindles, modern handrail and posts Carpet runner on main staircase Basement staircase maple with modern handrail Carpet runner on basement staircase Designer selected staircase stain |
|---|---|---|

The following items are not available through the Minto Design Centre and are displayed for decor purposes only:

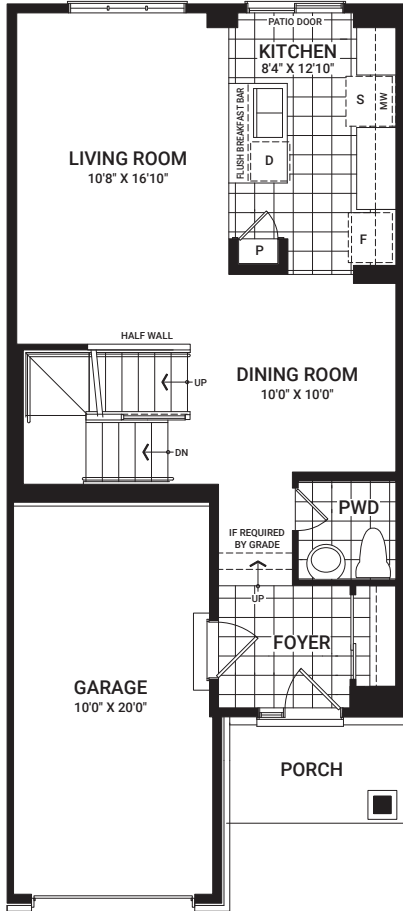
- | | |
|---|--|
| <ul style="list-style-type: none"> Appliances Painted floor in mechanical rooms in basement Telecom boxes in mechanical room Designer selected light fixtures Eavestroughs | <ul style="list-style-type: none"> Designer selected paint Wi-fi enabled items through Enercare™ (cameras, switches, smart home water shut off valve, security system, automated lighting) |
|---|--|

The Minto Design Centre offers the most current features and finishes for our homeowners. Ask your Design Consultant for more information as options are subject to change and some features may no longer be available.

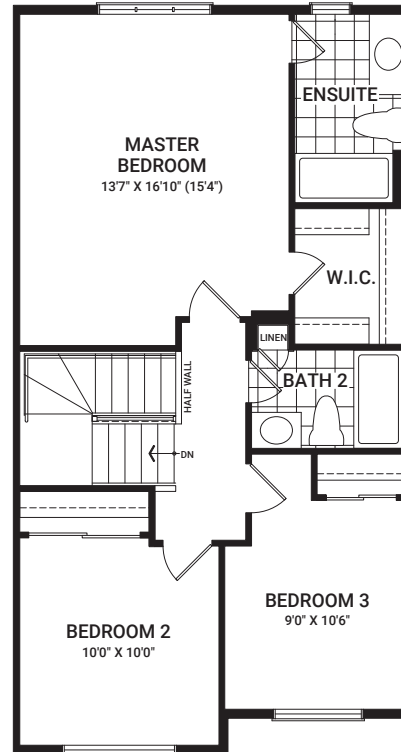
Haven

1,768 sq. ft.

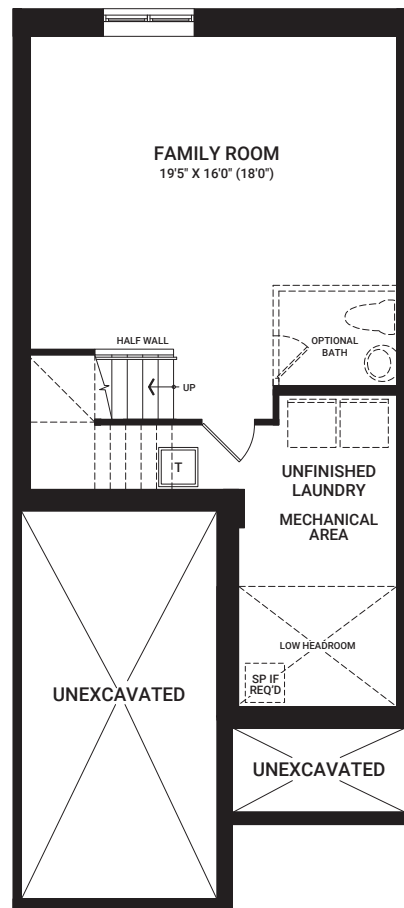
Floorplans vary depending on the phase and location of the community. Visit your Sales Centre for more information on what floorplan specifications are available to purchase in your community.



MAIN FLOOR



SECOND FLOOR



BASEMENT

I'm here to inspire. As you visit this Model Home, please keep in mind that dimensions, features, and finishes have been updated and will vary slightly from what's available for purchase, as we are continually improving our home design and material selection. Talk to a Sales Representative for more information.