

Haven Model Home

Executive Townhome

Modern and comfortable, the 3-bedroom Haven is full of light and space for entertaining. Host guests in the separate dining room and continue the party in the finished basement. Executive Townhomes come with finished basements and 9’ smooth ceilings on the main floor.

The following items in the Haven Model Home are available as additional investments through the Minto Design Centre:

<p>Foyer</p> <ul style="list-style-type: none">Sliding slab closet doors	<p>Master Bedroom</p> <ul style="list-style-type: none">Television package including additional electrical outlet on wall with conduit to telephone/cable outlet in roomAdditional data network plug on wall	<p>Throughout</p> <ul style="list-style-type: none">Designer selected tileDesigner selected hardwood flooringDesign selected carpet and underpadDesigner selected kitchen and bathroom cabinetrySoft close technology on all cabinetrySoft close hardware on cabinetry drawers and doorsDesigner selected quartz countertopsDesigner selected bathroom sinksDesigner selected faucetsLED pot lightsDesigner selected interior door hardware, and interior door style
<p>Powder Room</p> <ul style="list-style-type: none">Vanity in lieu of pedestal sinkDesigner selected quartz countertop	<p>Bed #2</p> <ul style="list-style-type: none">Sliding slab closet doors	
<p>Dining Room/Living Room</p> <ul style="list-style-type: none">Television package including additional electrical outlet with conduit to telephone/ cable outlet in roomAdditional data network plug	<p>Bed #3</p> <ul style="list-style-type: none">Sliding slab closet doors	
<p>Kitchen</p> <ul style="list-style-type: none">Optional kitchen layout AUnder cabinet puck lighting including double shelf inside cabinetry and low voltage switchDesigner selected undermount sinkDesigner selected faucetPot and pan drawersCapped outlets above island for future pendants with additional switch2 separate cabinetry selectionsFridge water line rough in	<p>Ensuite Bathroom</p> <ul style="list-style-type: none">LED shower pot lightDesigner selected shower door with black trim5’ shower with ceramic tile base in lieu of bathtub	
<p>Family Room</p> <ul style="list-style-type: none">Television package including additional electrical outlet on wall with conduit to telephone/cable outlet in roomAdditional data network plug on wallDesigner selected floating floor	<p>Bath #2</p> <ul style="list-style-type: none">LED shower pot light	<p>Other Areas</p> <ul style="list-style-type: none">Central vac completion in garageSmooth ceilings on second floor & basementMaple main staircase with stainless steel spindles, modern handrail and postsCarpet runner on main staircaseBasement staircase maple with modern handrailCarpet runner on basement staircaseDesigner selected staircase stain
	<p>Home Technology</p> <ul style="list-style-type: none">SpeakersAudio systemCAT-6 network plugs	
	<p>Mechanical</p> <ul style="list-style-type: none">Central air conditioning	
	<p>Exterior</p> <ul style="list-style-type: none">Designer selected front door hardware	

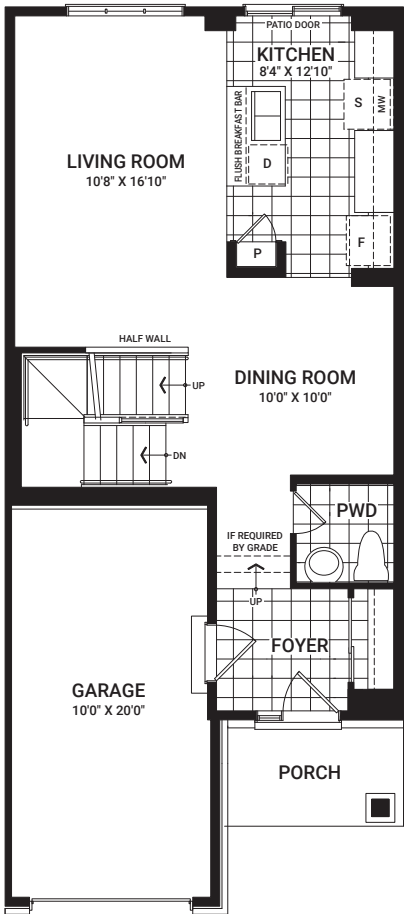
The following items are not available through the Minto Design Centre and are displayed for decor purposes only:

<ul style="list-style-type: none">AppliancesPainted floor in mechanical rooms in basementTelecom boxes in mechanical roomDesigner selected light fixturesEavestroughs	<ul style="list-style-type: none">Designer selected paintWi-fi enabled items through Enercare™ (cameras, switches, smart home water shut off valve, security system, automated lighting)	<p>The Minto Design Centre offers the most current features and finishes for our homeowners. Ask your Design Consultant for more information as options are subject to change and some features may no longer be available.</p>
---	---	---

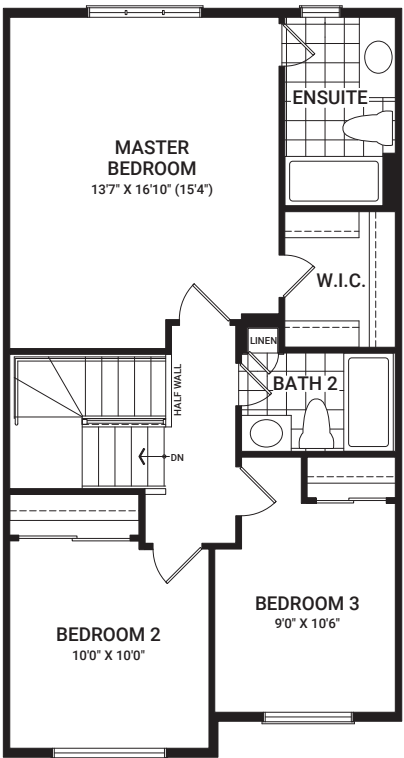
Haven

1,768 sq. ft.

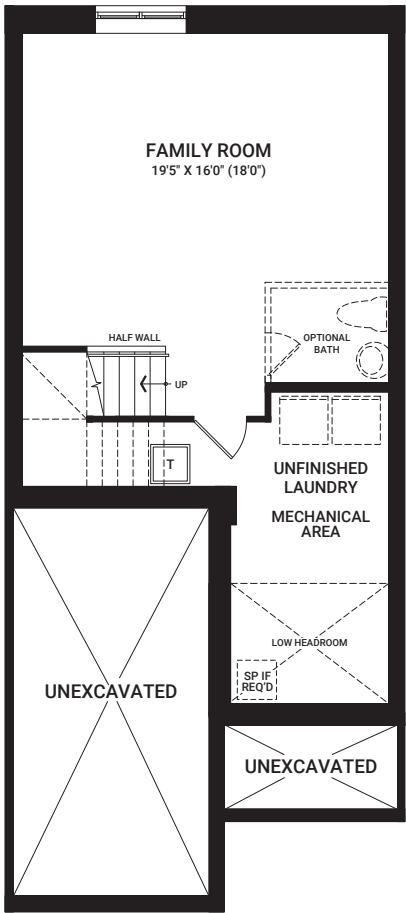
Floorplans vary depending on the phase and location of the community. Visit your Sales Centre for more information on what floorplan specifications are available to purchase in your community.



MAIN FLOOR



SECOND FLOOR



BASEMENT

I'm here to inspire. As you visit this Model Home, please keep in mind that dimensions, features, and finishes have been updated and will vary slightly from what's available for purchase, as we are continually improving our home design and material selection. Talk to a Sales Representative for more information.