



Clean lines and generous windows open up the spacious Hyde. The generous kitchen island is open to the great room and steps from the separate dining room. The mudroom is just off the garage and features a walk-in closet with ample space for storage.

The following items in the Hyde Model Home are available as additional investments through the Minto Design Centre:

Great Room

- Flex Plan: Great Room Fireplace at Rear (discontinued)
- Gas fireplace with modern inside framing (discontinued)
- Engineered hickory hardwood flooring
- LED pot lights

Kitchen

- Flex Plan: Optional Kitchen Layout
- Microwave hood fan rough-in
- Flip door with textured glass
- Quartz countertop
- Designer Selected glass tiled backsplash with accent wall
- Kneewall upgrade to railing between dining room stair case
- Engineered hickory hardwood flooring
- LED pot lights

Upper Hall

- Engineered hickory hardwood flooring
- Insulated LED pot lights

Master Bedroom

- Carpet with high density foam
- Insulated LED pot lights

Master Bedroom Ensuite

- Flex Plan: Ensuite with 5’ shower in lieu of tub
- Designer Selected ceramic flooring
- Designer Selected bathtub ceramic wall with accent tiles
- Quartz countertop

Bedrooms

- Carpet with high density foam
- Closet swing doors
- LED insulated pot lights

Main Bathroom

- Designer Selected ceramic flooring
- Designer Selected bathtub ceramic wall with accent tiles
- Quartz countertop

Laundry Room

- Upper cabinetry and hardware
- Designer Selected ceramic flooring

Basement

- Finished Basement
- Laminate flooring
- 2-Piece Bathroom (discontinued)
 - Quartz countertop
 - Designer Selected ceramic flooring
- Open concept maple-stained staircase
- LED pot lights

Please note: Design Centre options for finished basement may differ than what is shown.

Powder Room

- Designer Selected ceramic flooring

Other Areas

- Designer Selected ceramic flooring in Foyer and Mudroom
- Flex Plan: Mudroom Layout A (discontinued)
- Closet swing doors in Mudroom
- Lookout elevation (depending on site conditions)
- LED pot lights in Dining Room, Lower Hall, and Foyer
- Exterior LED pot lights in soffit

Throughout

- Coloured window and exterior door frames
- Stained maple staircase
- Glass railing & maple handrail (discontinued)
- Moulded classic design style interior doors
- Interior door hardware
- Urban Collection baseboards and casings
- Staircase carpet runner

Mechanical

- Power humidifier is now included as standard*
- Central air conditioning

The following items are not available through the Minto Design Centre and are displayed for decor purposes only:

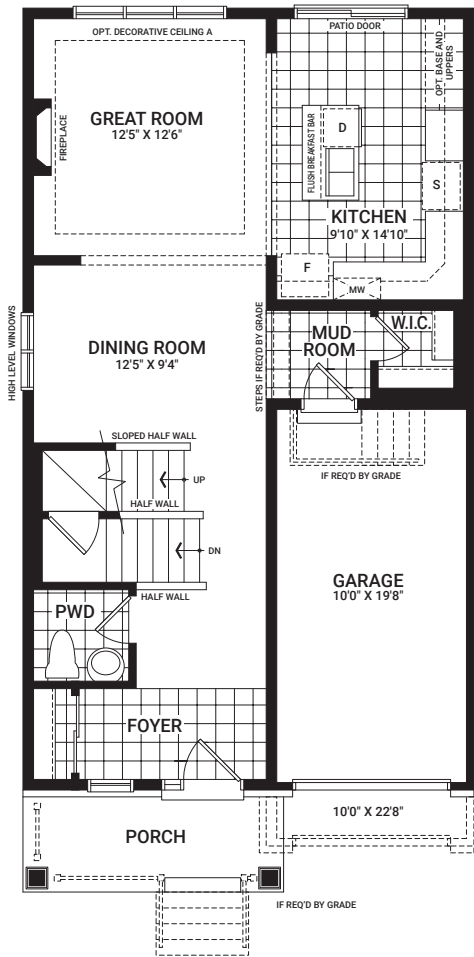
- Decorative light fixtures
- Vanity bar light in Powder Room, Master Bedroom Ensuite, and Main Bathroom
- Appliances
- Open shelves in Kitchen millwork
- Finished Den in Basement
- Custom wallpaper and paint
- Eavestroughing
- Artwork and decorative mirrors
- Furnishings, accessories and window treatments
- Millwork and hardware linen closet
- Automated lights
- Audio system
- Security system
- Surveillance
- Wi-Fi-enabled upgrade package through Enercare Smarter Homes™

The Minto Design Centre offers the most current features and finishes for our homeowners. Ask your Design Consultant for more information as options are subject to change and some features may no longer be available.

Hyde

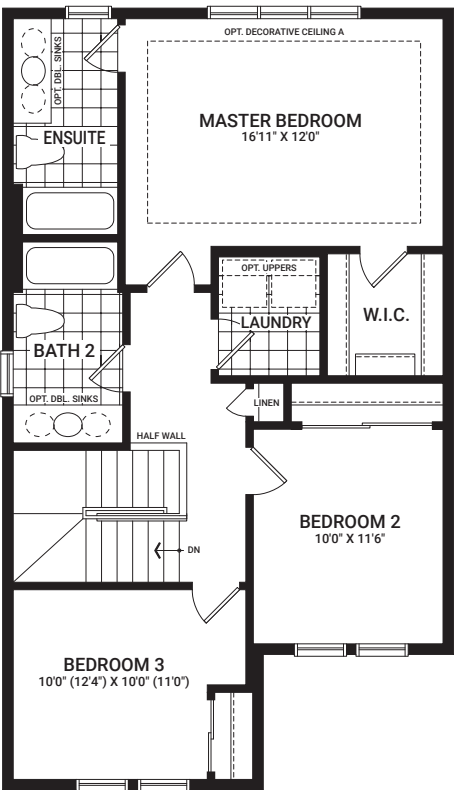
1,690 sq. ft.

Floorplans vary depending on the phase and location of the community. Visit your Sales Centre for more information on what floorplan specifications are available to purchase in your community.

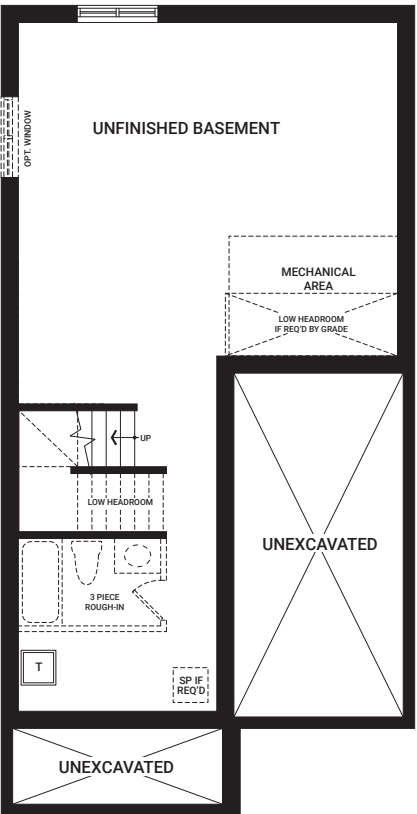


MAIN FLOOR

I'm here to inspire. As you visit this Model Home, please keep in mind that dimensions, features, and finishes have been updated and will vary slightly from what's available for purchase, as we are continually improving our home design and material selection. Talk to a Sales Representative for more information.



SECOND FLOOR



BASEMENT