

# Monterey End Model Home

## Executive Townhome

Boasting a light-filled, open-concept main floor, this Townhome is beautifully designed with both family and entertaining in mind. Executive Townhomes come with finished basements and 9' smooth ceilings on the main floor.

The following items in the Monterey Model Home are available as additional investments through the Minto Design Centre:

<p><b>Foyer</b></p> <ul style="list-style-type: none"> <li>Sliding slab closet doors</li> </ul> <p><b>Powder Room</b></p> <ul style="list-style-type: none"> <li>Vanity in lieu of pedestal sink</li> <li>Designer selected quartz countertop with undermount sink</li> </ul> <p><b>Kitchen</b></p> <ul style="list-style-type: none"> <li>Microwave shelf in lower cabinetry with drawer</li> <li>Under cabinet puck lighting, including double shelf inside cabinetry and low voltage switch</li> <li>Double waterfall countertop on island</li> <li>Decorative hood fan</li> <li>Extended backsplash tile behind decorative hood fan</li> <li>Relocated utility drawers</li> <li>Designer selected undermount sink</li> <li>Designer selected faucet</li> <li>Pot and pan drawers</li> <li>Enlarged fridge opening</li> <li>24" deep upper cabinet over fridge</li> <li>Fridge gable</li> <li>Capped outlets above island for future pendants with additional switch</li> <li>Fridge water line rough in</li> </ul> <p><b>Family Room</b></p> <ul style="list-style-type: none"> <li>Optional fireplace in basement</li> <li>Fireplace mantel not installed</li> <li>Designer selected fireplace tile surround</li> <li>Designer selected floating floor</li> <li>Additional data network plug above fireplace</li> </ul>	<p><b>Primary Bedroom</b></p> <ul style="list-style-type: none"> <li>Television package, including additional electrical outlet on wall with conduit to telephone/cable outlet in room</li> <li>Additional data network plug on wall</li> </ul> <p><b>Bed #2</b></p> <ul style="list-style-type: none"> <li>Sliding slab closet doors</li> </ul> <p><b>Bed #3</b></p> <ul style="list-style-type: none"> <li>Sliding slab closet doors</li> </ul> <p><b>Ensuite Bathroom</b></p> <ul style="list-style-type: none"> <li>LED shower pot light</li> <li>Two-sided seamless glass shower enclosure</li> <li>4' shower with bench and ceramic tile shower base in lieu of bathtub</li> </ul> <p><b>Bath #2</b></p> <ul style="list-style-type: none"> <li>LED shower pot light</li> </ul> <p><b>Basement Bath</b></p> <ul style="list-style-type: none"> <li>2-piece basement bathroom</li> <li>Designer selected pedestal sink</li> </ul> <p><b>Laundry room</b></p> <ul style="list-style-type: none"> <li>Optional laundry cabinets</li> </ul> <p><b>Home Technology</b></p> <ul style="list-style-type: none"> <li>Speakers</li> <li>Audio system</li> <li>CAT-6 network plugs</li> </ul> <p><b>Mechanical</b></p> <ul style="list-style-type: none"> <li>Central air conditioning</li> </ul>	<p><b>Exterior</b></p> <ul style="list-style-type: none"> <li>Designer selected front door hardware</li> </ul> <p><b>Throughout</b></p> <ul style="list-style-type: none"> <li>Designer selected tile</li> <li>Designer selected hardwood flooring</li> <li>Design selected carpet and underpad</li> <li>Designer selected kitchen, bathroom and laundry room cabinetry</li> <li>Soft close technology on all cabinetry</li> <li>Soft close hardware on all cabinet drawers and doors</li> <li>Designer selected quartz countertops with undermount sinks</li> <li>Designer selected faucets</li> <li>Designer selected toilets</li> <li>LED pot lights</li> <li>Designer selected interior door hardware, and interior door style</li> </ul> <p><b>Other Areas</b></p> <ul style="list-style-type: none"> <li>Low wall to railing on second floor</li> <li>Central vac completion in garage</li> <li>Smooth ceilings on second floor &amp; basement</li> <li>Oak main staircase with painted white spindles, modern handrail and posts</li> <li>Carpet runner on main staircase</li> <li>Oak basement staircase with modern handrail</li> <li>Carpet runner on basement staircase</li> <li>Designer selected staircase stain</li> </ul>
--	---	--

The following items are not available through the Minto Design Centre and are displayed for decor purposes only:

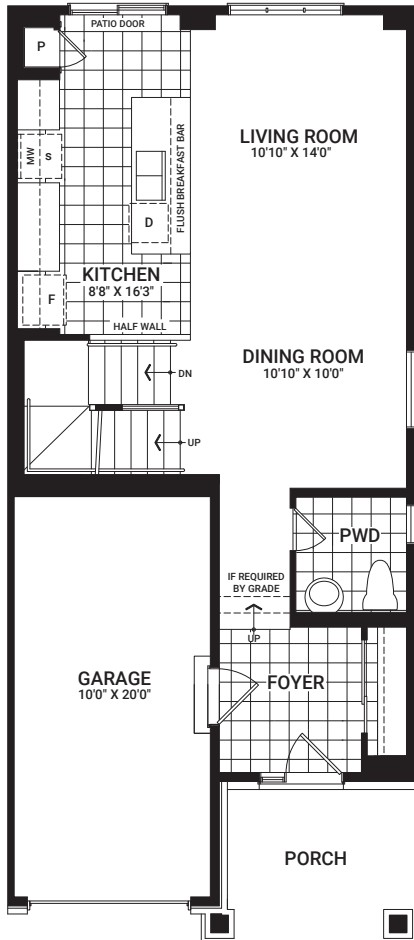
- Appliances
- Painted floor in mechanical rooms in basement
- Telecom boxes in mechanical room
- Designer selected light fixtures
- Eavestroughs
- Designer selected paint
- Wi-fi enabled items through Enercare™ (cameras, switches, smart home water shut off valve, security system, automated lighting)
- Shower frame enclosure colour in Primary Bedroom Ensuite

The Minto Design Centre offers the most current features and finishes for our homeowners. Ask your Design Consultant for more information as options are subject to change and some features may no longer be available.

# Monterey End

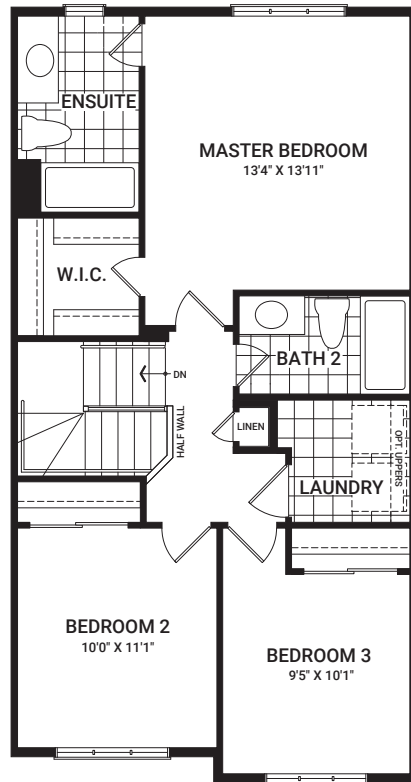
1,918 sq. ft.

Floorplans vary depending on the phase and location of the community. Visit your Sales Centre for more information on what floorplan specifications are available to purchase in your community.

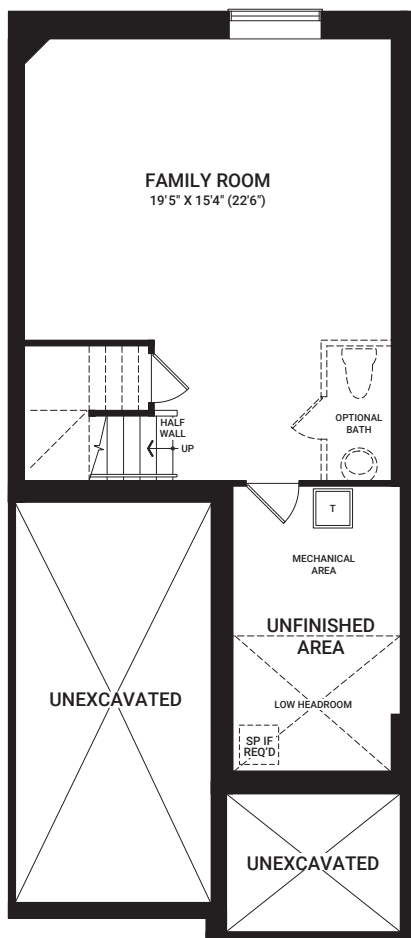


MAIN FLOOR

*I'm here to inspire. As you visit this Model Home, please keep in mind that dimensions, features, and finishes have been updated and will vary slightly from what's available for purchase, as we are continually improving our home design and material selection. Talk to a Sales Representative for more information.*



SECOND FLOOR



BASEMENT