



The Kinghurst boasts a confident and contemporary design. With plenty of walk-in closet space, large bedrooms, and a second-floor laundry room, the Kinghurst shows off its efficient use of space.

The following items in the Kinghurst Model Home are available as additional investments through the Minto Design Centre:

Great Room

- Designer Selected floor to ceiling ceramic surround
- Fireplace mantel not installed
- Engineered oak hardwood flooring
- LED pot lights
- Bulkhead removed between Great Room and Breakfast Area
- Low wall between Den and Great Room (discontinued)

Den

- Engineered oak hardwood flooring
- LED pot lights

Kitchen and Breakfast Area

- Flex Plan: Optional Kitchen Layout
- Pot and pan drawers
- Designer Selected backsplash
- High gloss cabinetry and hardware
- Quartz countertop
- Flip door with textured glass
- Microwave hood fan rough-in
- Engineered oak hardwood flooring
- LED pot lights
- LED puck lights

Upper Hall

- Engineered oak hardwood flooring
- Insulated LED pot lights

Master Bedroom

- Carpet with high density foam underpad
- Insulated LED pot lights

Master Bedroom Ensuite

- Flex Plan: Ensuite with 5' shower in lieu of tub
- Designer Selected ceramic flooring
- Modern walnut wheat cabinetry and hardware

- Quartz countertop
- Floating vanity (recessed kick plate)
- Designer Selected mosaic wall tiles
- Designer Selected ceramic shower base with seamless glass door
- Double sinks

Bedrooms

- Carpet with high density foam underpad
- Open shelves in Bedroom #3 (discontinued)

Main Bathroom

- Designer Selected ceramic flooring
- High gloss cabinetry and hardware
- Quartz countertop
- Floating vanity (recessed kick plate)
- Designer Selected bathtub ceramic wall with accent tiles

Laundry Room

- Designer Selected ceramic flooring
- Upper cabinetry and hardware

Basement

- Open concept maple-stained staircase
- Rec. Room finished with laminate flooring
- 3-Piece bathroom
 - Bathtub ceramic wall with accent tiles
 - Quartz countertop
 - Floating vanity (recessed kick plate)
 - Ceramic flooring
 - High gloss cabinetry and hardware
- LED pot lights

Please note: Design Centre options for finished basement may differ than what is shown.

Powder Room

- Flex Plan: Main Floor Layout A
- Designer Selected ceramic flooring

Other Areas

- Designer Selected ceramic flooring in Foyer and Mudroom
- Engineered oak hardwood flooring in Lower Hall
- Railing in lieu of kneewall at Main staircase
- LED pot lights in Lower Hall and Foyer
- Exterior LED pot lights in soffit

Throughout

- Coloured window and exterior door frames
- Stained maple staircase
- Glass railings (discontinued)
- Closet sliding slab doors
- Madison style interior doors
- Interior door hardware
- Urban Modern Collection baseboards and casings
- Smooth painted ceiling on second floor
- Staircase carpet runner

Mechanical

- Power humidifier is now included as standard*
- Central air conditioning

The following items are not available through the Minto Design Centre and are displayed for decor purposes only:

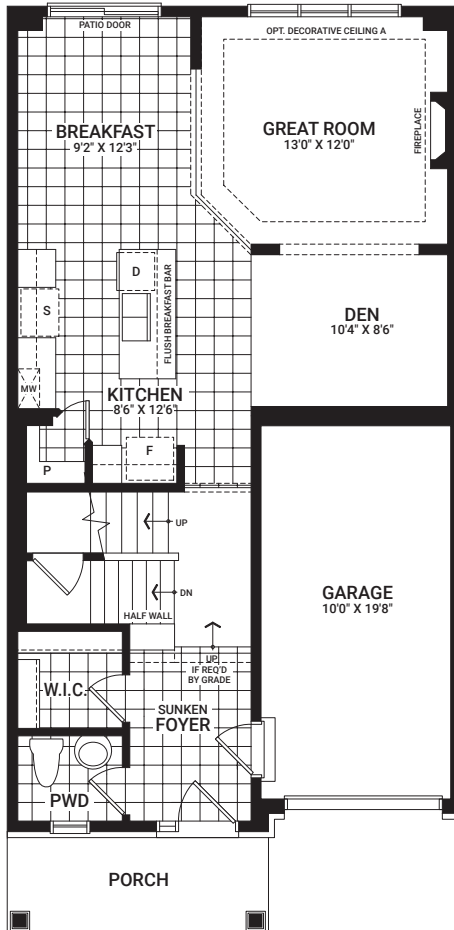
- Custom wallpaper and paint
- Eavestrouthing
- Artwork and decorative mirrors
- Decorative light fixtures
- Two-toned kitchen cabinets
- Appliances
- Staircase glass railings
- Furnishings, accessories and window treatments
- Quartz backsplash in Master Bedroom Ensuite and Main Bathroom
- Designer Selected plumbing fixtures (such as sinks, faucets, toilets, shower heads, bathtubs, etc.)
- Automated lights
- Audio system
- Security system
- Surveillance
- Wi-Fi-enabled upgrade package through Enercare Smarter Homes™

The Minto Design Centre offers the most current features and finishes for our homeowners. Ask your Design Consultant for more information as options are subject to change and some features may no longer be available.

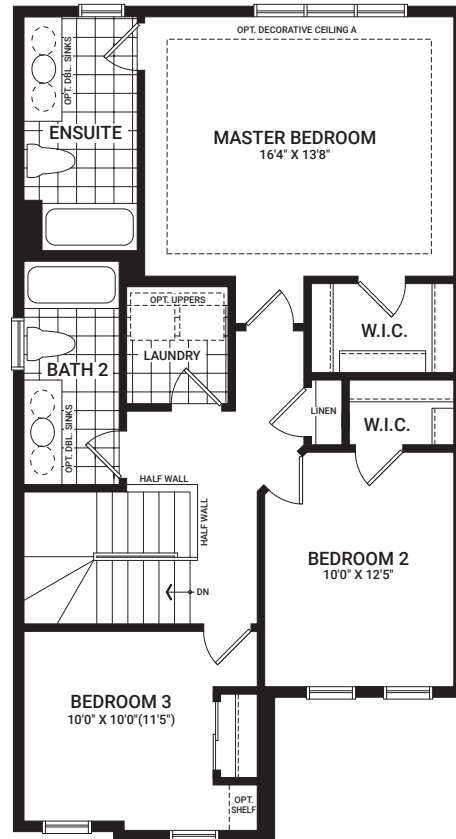
Kinghurst

1,781 sq. ft.

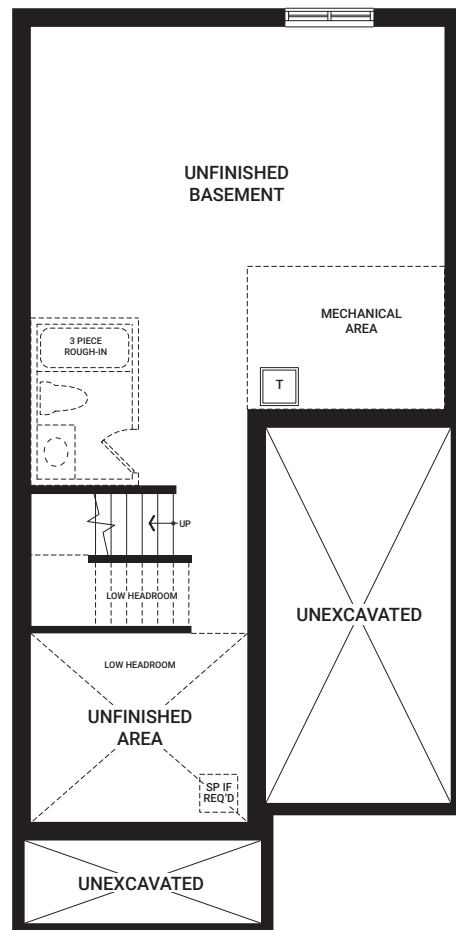
Floorplans vary depending on the phase and location of the community. Visit your Sales Centre for more information on what floorplan specifications are available to purchase in your community.



MAIN FLOOR



SECOND FLOOR



BASEMENT

I'm here to inspire. As you visit this Model Home, please keep in mind that dimensions, features, and finishes have been updated and will vary slightly from what's available for purchase, as we are continually improving our home design and material selection. Talk to a Sales Representative for more information.