

# Tahoe End Model Home

## Executive Townhome

The Tahoe End brings smart design to the forefront with the option of either three or four bedrooms, making it just perfect for the growing family. Executive Townhomes come with finished basements and 9’ smooth ceilings on the main floor.

The following items in the Tahoe End Model Home are available as additional investments through the Minto Design Centre:

<b>Foyer</b> <ul style="list-style-type: none"><li>Sliding slab closet doors</li><li>Staggered floor tile installation</li></ul>	<b>Family Room</b> <ul style="list-style-type: none"><li>Television package including additional electrical outlet on wall with conduit to telephone/cable outlet in room</li><li>Additional data network plug on wall</li><li>Designer selected floating floor</li></ul>	<b>Home Technology</b> <ul style="list-style-type: none"><li>Speakers</li><li>Audio system</li><li>CAT-6 network plugs</li></ul>
<b>Powder Room</b> <ul style="list-style-type: none"><li>Staggered floor tile installation</li></ul>	<b>Master Bedroom:</b> <ul style="list-style-type: none"><li>Television package including additional electrical outlet on wall with conduit to telephone/cable outlet in room</li><li>Additional data network plug on wall</li></ul>	<b>Mechanical</b> <ul style="list-style-type: none"><li>Central air conditioning</li></ul>
<b>Mud room</b> <ul style="list-style-type: none"><li>Sliding slab closet doors</li><li>Staggered floor tile installation</li></ul>	<b>Bed #2</b> <ul style="list-style-type: none"><li>Sliding slab closet doors</li></ul>	<b>Exterior</b> <ul style="list-style-type: none"><li>Designer selected front door hardware</li></ul>
<b>Dining Room/Living Room</b> <ul style="list-style-type: none"><li>Optional fireplace at rear</li><li>46” linear fireplace In/Out box configuration</li><li>Designer selected fireplace tile surround</li><li>Television package including additional electrical outlet above fireplace with conduit to telephone/cable outlet in room</li><li>Additional data network plug above fireplace</li></ul>	<b>Bed #3</b> <ul style="list-style-type: none"><li>Sliding slab closet doors</li></ul>	<b>Throughout</b> <ul style="list-style-type: none"><li>Designer selected tile</li><li>Designer selected hardwood flooring</li><li>Design selected carpet and underpad</li><li>Designer selected kitchen, bathroom and laundry room cabinetry</li><li>Soft close hardware on all cabinetry doors and drawers</li><li>Designer selected cabinetry hardware</li><li>Designer selected quartz countertops with undermount sinks</li><li>Designer selected faucets</li><li>Designer selected toilets</li><li>LED pot lights</li><li>Designer selected interior door hardware, and interior door style</li></ul>
<b>Kitchen</b> <ul style="list-style-type: none"><li>Decorative hood fan</li><li>Extended backsplash tile behind decorative hood fan</li><li>Relocated microwave to lower cabinetry with drawer</li><li>Additional bulkhead above kitchen cabinetry</li><li>Under cabinet puck lighting including double shelf inside cabinetry and low voltage switch</li><li>Designer selected undermount sink</li><li>Designer selected faucet</li><li>Pot and pan drawers</li><li>24” deep upper fridge cabinet</li><li>Enlarged fridge opening</li><li>Fridge gable</li><li>Capped outlets above island for future pendants with additional switch</li><li>Fridge water line rough-in</li></ul>	<b>Bed #4</b> <ul style="list-style-type: none"><li>Sliding slab closet doors</li></ul>	<b>Other Areas</b> <ul style="list-style-type: none"><li>Main floor additional stair railing</li><li>Central vac completion in garage</li><li>Smooth ceilings on second floor &amp; basement</li><li>Oak main staircase with black metal spindles, modern handrail and newel posts</li><li>Carpet runner on main staircase</li><li>Oak basement staircase with oak modern handrail</li><li>Carpet runner on basement staircase</li><li>Designer selected staircase stain</li></ul>
	<b>Ensuite Bathroom</b> <ul style="list-style-type: none"><li>LED shower pot light</li><li>Designer selected shower door with chrome trim</li><li>5’ shower with ceramic tile base in lieu of bathtub</li></ul>	
	<b>Bath #2</b> <ul style="list-style-type: none"><li>LED shower pot light</li></ul>	
	<b>Basement Bath</b> <ul style="list-style-type: none"><li>2-piece basement bathroom</li></ul>	
	<b>Laundry Room</b> <ul style="list-style-type: none"><li>Optional laundry cabinets</li><li>Staggered floor tile installation</li></ul>	

The following items are not available through the Minto Design Centre and are displayed for decor purposes only:

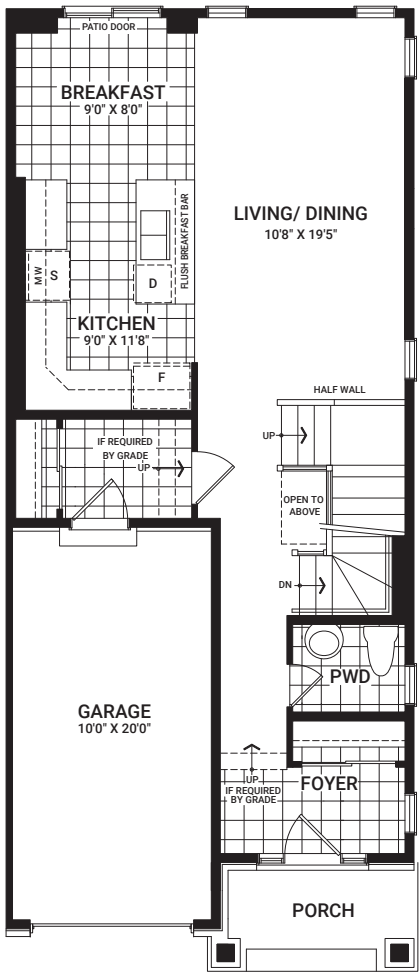
- Appliances
  - Painted floor in mechanical rooms in basement
  - Telecom boxes in mechanical room
  - Designer selected light fixtures
  - Eavestroughs
- Designer selected paint
  - Wi-fi enabled items through Enercare™ (cameras, switches, smart home water shut off valve, security system, automated lighting)

The Minto Design Centre offers the most current features and finishes for our homeowners. Ask your Design Consultant for more information as options are subject to change and some features may no longer be available.

# Tahoe End

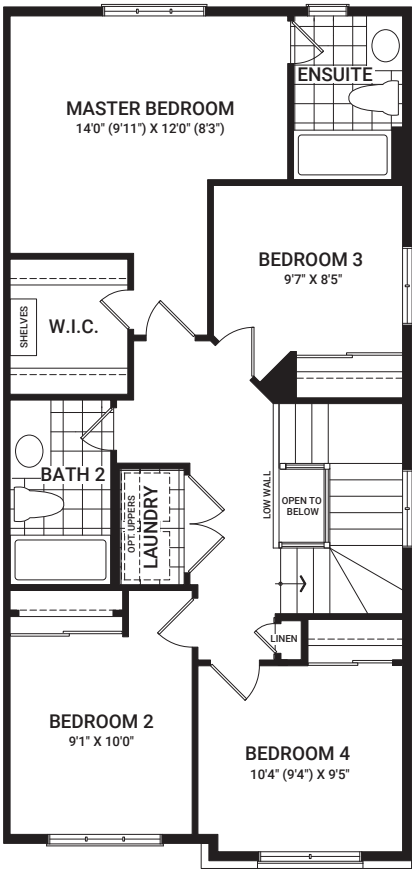
with 4-bedroom option – 2,084 sq. ft.

Floorplans vary depending on the phase and location of the community. Visit your Sales Centre for more information on what floorplan specifications are available to purchase in your community.

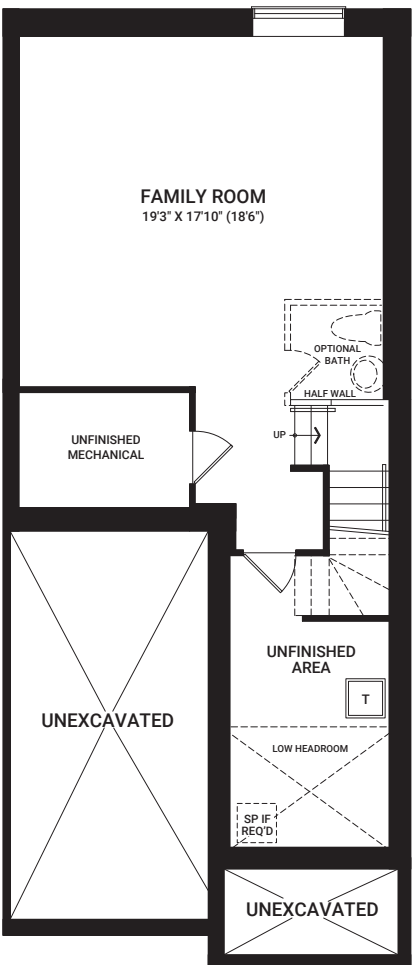


MAIN FLOOR

*I'm here to inspire. As you visit this Model Home, please keep in mind that dimensions, features, and finishes have been updated and will vary slightly from what's available for purchase, as we are continually improving our home design and material selection. Talk to a Sales Representative for more information.*



SECOND FLOOR



BASEMENT