



Elegance and luxury come together seamlessly in the Killarney. The raised family room between the first and second floor features soaring ceilings, a statement fireplace, and an optional covered balcony.

The following items in the Killarney Model Home are available as additional investments through the Minto Design Centre:

#### Great Room

- Decorative ceiling
- Engineered walnut hardwood flooring
- Colonial profile crown moulding (discontinued)
- Terrace doors in lieu of fireplace
- LED pot lights

#### Den

- LED pot lights

#### Dining Room

- Engineered walnut hardwood flooring
- LED pot lights

#### Kitchen and Breakfast Area

- Flex Plan: Optional Kitchen Layout
- Gas rough-in for stove
- Quartz countertop
- Two-toned kitchen cabinets
- Soft-close technology
- Pot and pan drawers
- Chimney style hood fan
- Designer Selected ceramic flooring
- Terrace doors in lieu of patio door
- LED pot lights

#### Family Room

- Sloped ceiling (depending on elevation)
- Engineered walnut hardwood flooring
- Electric fireplace with modern inside framing (discontinued)
- Insulated LED pot lights

#### Upper Hall

- Engineered walnut hardwood flooring
- Insulated LED pot lights

#### Master Bedroom

- Engineered walnut hardwood flooring
- Colonial profile crown moulding (discontinued)
- Insulated LED pot lights

#### Master Bedroom Ensuite

- Designer Selected ceramic flooring
- Designer Selected shower ceramic wall with accent tiles
- Designer Selected ceramic shower base with seamless glass shower door
- Quartz countertop
- Freestanding soaker tub
- Insulated LED pot lights

#### Bedrooms

- Carpet with high density foam
- Closet swing doors

#### Main Bathroom

- Designer Selected ceramic flooring
- Designer Selected bathtub ceramic wall with accent tiles (discontinued)
- Quartz countertop

#### Laundry Room

- Upper cabinetry and hardware
- Designer Selected ceramic flooring

#### Basement

- Finished Basement
- Increased basement height (discontinued)
- LED pot lights

#### Powder Room

- Designer Selected ceramic flooring
- Designer Selected ceramic accent 3D tiles (discontinued)

#### Other Areas

- Designer Selected ceramic flooring in Foyer
- Lookout elevation (depending on site conditions)
- Exterior LED pot lights in soffit

#### Throughout

- Coloured window and exterior door frames
- Stained oak stairs tread with painted risers and stringers
- Painted white spindles, posts and handrail (discontinued)
- Wooden spindles and supports
- Painted oak handrails
- Molded Craftsman Conmore style interior doors
- Interior door hardware
- Elegantly detailed baseboards and casings
- Smooth painted ceiling on second floor
- Staircase carpet runner

#### Mechanical

- Power humidifier is now included as standard
- Central air conditioning

The following items are not available through the Minto Design Centre and are displayed for decor purposes only:

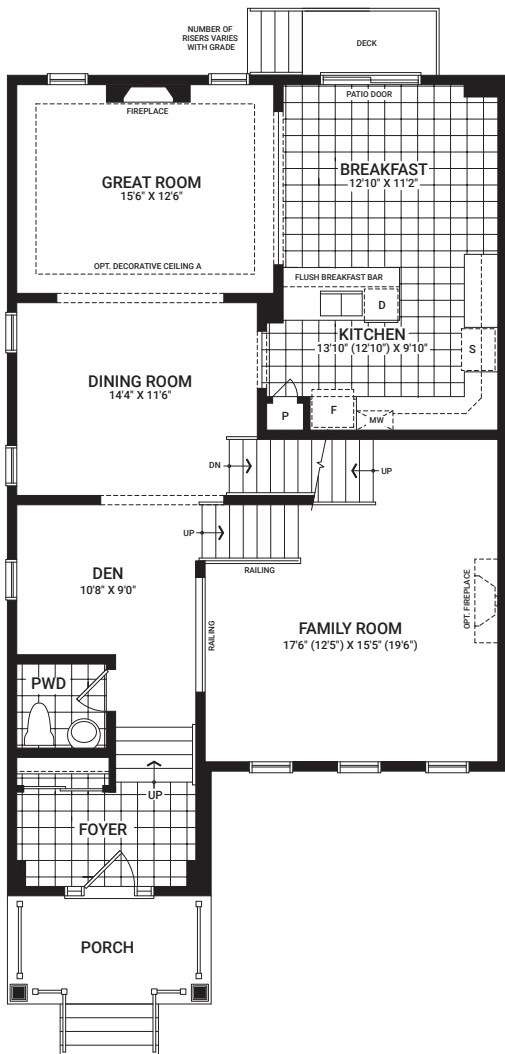
- Decorative light fixtures
- Large deck off Great Room
- Accent wall in Great Room
- City plastering ceiling medallion in Dining Room
- Wet bar in Basement
- Terrace door in Basement
- Glass wall divider in Basement
- Dog bath in Basement
- Vanity bar light in Powder Room, Master Bedroom Ensuite, and Main Bathroom
- Kitchen backsplash
- Decorative plaster ceilings in Family Room, Great Room and Master Bedroom
- Millwork linen closet in Upper Hall
- Accent wall moulding in Entrance and Great Room
- Appliances
- Custom wallpaper and paint
- Eavestroughing
- Artwork and decorative mirrors
- Furnishings, accessories and window treatments
- Solar panel system
- Extra light over freestanding bathtub in Master Bedroom Ensuite
- Automated lights
- Audio system
- Security system
- Surveillance
- Wi-Fi-enabled upgrade package through Enercare Smarter Homes™

The Minto Design Centre offers the most current features and finishes for our homeowners. Ask your Design Consultant for more information as options are subject to change and some features may no longer be available.

# Killarney

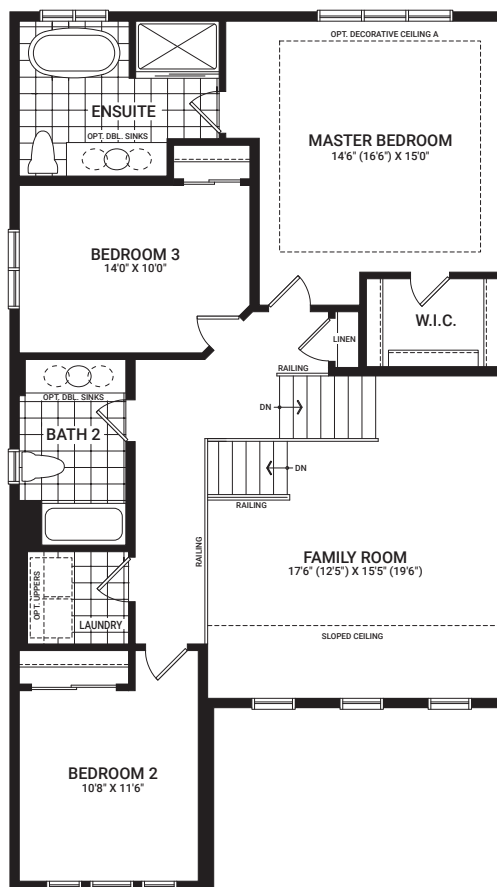
2,443 sq. ft.

Floorplans vary depending on the phase and location of the community. Visit your Sales Centre for more information on what floorplan specifications are available to purchase in your community.

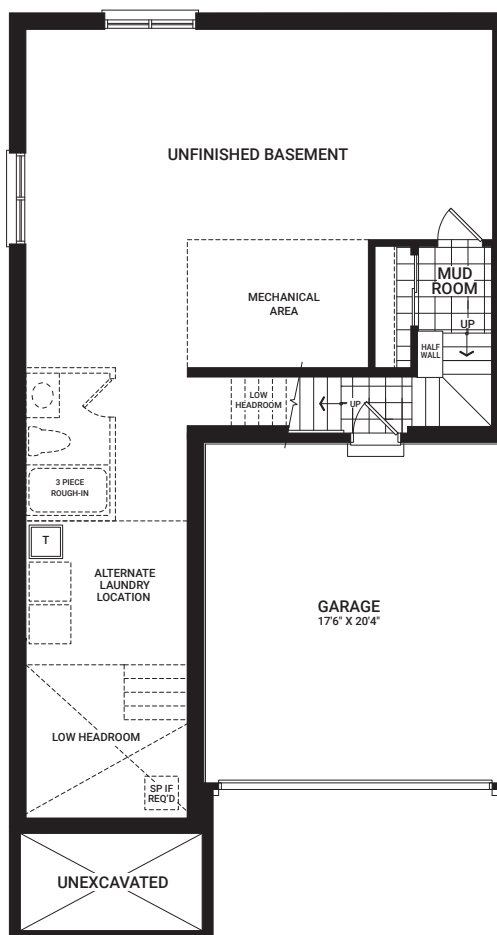


MAIN FLOOR

*I'm here to inspire. As you visit this Model Home, please keep in mind that dimensions, features, and finishes have been updated and will vary slightly from what's available for purchase, as we are continually improving our home design and material selection. Talk to a Sales Representative for more information.*



SECOND FLOOR



BASEMENT