



## Stanley

36' Single Family Home –  
Elevation C

AVALON

Brightly lit and open-concept, the Stanley has been smartly designed for contemporary living while the eye-catching flared staircase in the foyer creates a sophisticated introduction to the home.

The following items in the Stanley Model Home are available as additional investments through the Minto Design Centre:

#### Great Room

- Gas fireplace with modern inside framing and surround (discontinued)
- Engineered oak hardwood flooring
- LED pot lights

#### Den

- Engineered oak hardwood flooring
- LED pot lights

#### Dining Room

- Engineered oak hardwood flooring
- LED pot lights

#### Kitchen and Breakfast Area

- Pot and pan drawers
- Designer Selected backsplash
- Flat panel gloss cabinetry and hardware
- Quartz countertop
- Optional aluminum and glass pantry (discontinued)
- Extended island with millwork
- 42" upper cabinets
- Microwave hood fan rough-in
- Engineered oak hardwood flooring
- Triple patio doors
- LED pot lights
- LED puck lights

#### Upper Hall

- Engineered oak hardwood flooring
- Insulated LED pot lights

#### Master Bedroom

- Engineered oak hardwood flooring
- Insulated LED pot lights

#### Master Bedroom Ensuite

- Designer Selected ceramic flooring
- Oak rift cabinetry and hardware
- Quartz countertop
- Floating vanity (recessed kick plate)
- Freestanding soaker bathtub
- Designer Selected ceramic wall tiles with accent tile
- Designer Selected ceramic shower base with seamless glass door
- Double sinks

#### Bedrooms

- Carpet with high density foam

#### Main Bathroom

- Designer Selected ceramic flooring
- Flat panel gloss cabinetry and hardware
- Quartz countertop
- Floating vanity (recessed kick plate)
- Designer Selected bathtub ceramic wall with accent tiles

#### Laundry Room

- Designer Selected ceramic flooring
- Upper cabinetry and hardware

#### Basement

- Flex Plan: Finished Basement Rec. Room (discontinued)
- Open concept oak-stained staircase
- Increased basement height
- Laminate flooring
- LED pot lights

#### Powder Room

- Designer Selected ceramic flooring

#### Other Areas

- 9' ceiling on Second Floor including window height increase
- Designer Selected ceramic flooring in Foyer, Lower Hall and Mudroom
- Additional window in Mudroom
- LED pot lights in Foyer, Lower Hall and Mudroom

#### Throughout

- Coloured window and exterior door frames
- Stained oak staircase
- Stained oak posts with stainless steel detail
- Stainless steel spindles and supports
- Modern oak handrails
- Madison style interior doors
- Interior door hardware
- Urban Modern Collection baseboards and casings
- Smooth painted ceiling on the second floor
- Soft-close technology
- Closet sliding slab doors
- Staircase carpet runner

#### Mechanical

- Power humidifier is now included as standard
- Central air conditioning

The following items are not available through the Minto Design Centre and are displayed for decor purposes only:

- Custom wallpaper and paint
- Eavestrouthing
- Artwork and decorative mirrors
- Decorative light fixtures
- Furnishings, accessories and window treatments
- Quartz backsplash in Master Bedroom Ensuite and Main Bathroom
- Appliances
- TV entertainment millwork in Basement

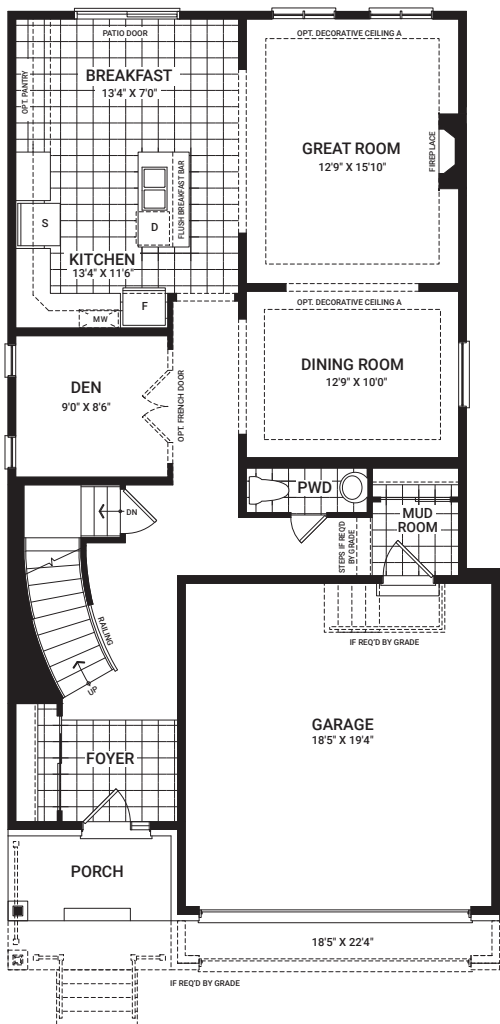
- Designer Selected plumbing fixtures (such as sinks, faucets, toilets, shower heads, bathtubs, etc.)
- Accent tiles on ceramic flooring
- Millwork and hardware in Mudroom
- Millwork and hardware on linen closet
- Automated lights
- Audio system
- Security system
- Surveillance
- Wi-Fi-enabled upgrade package through Enercare Smarter Homes™

The Minto Design Centre offers the most current features and finishes for our homeowners. Ask your Design Consultant for more information as options are subject to change and some features may no longer be available.

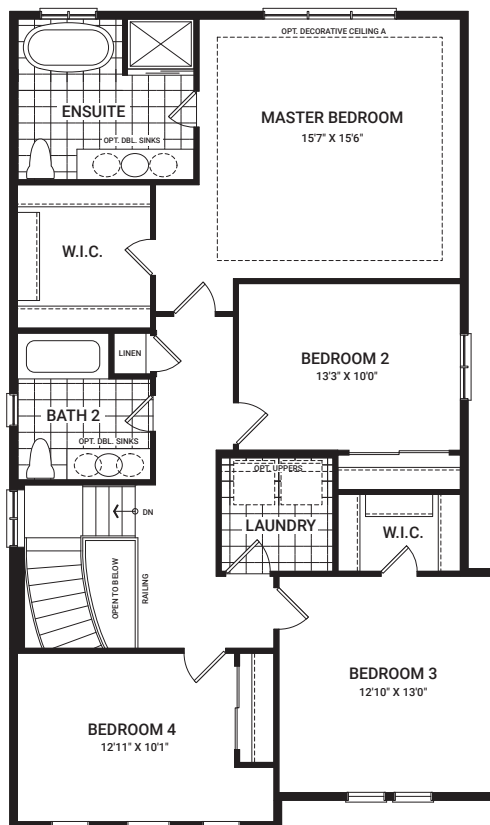
# Stanley

2,461 sq. ft.

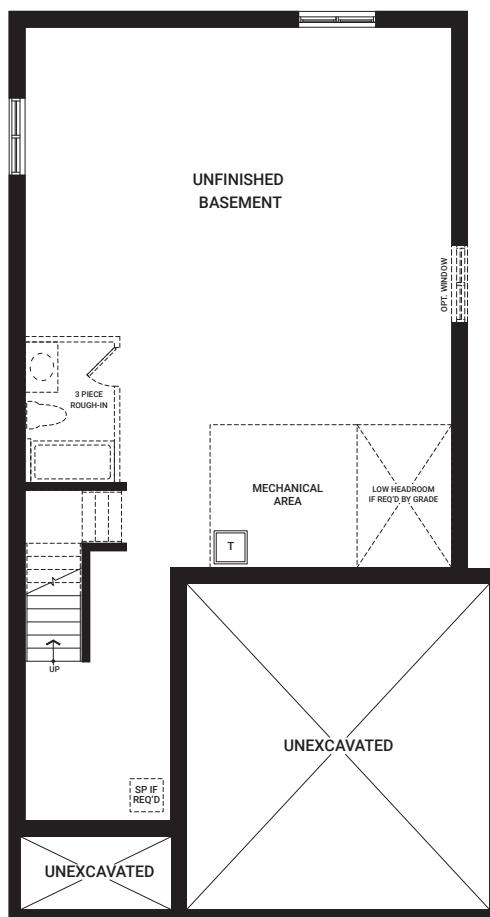
Floorplans vary depending on the phase and location of the community. Visit your Sales Centre for more information on what floorplan specifications are available to purchase in your community.



MAIN FLOOR



SECOND FLOOR



BASEMENT

*I'm here to inspire. As you visit this Model Home, please keep in mind that dimensions, features, and finishes have been updated and will vary slightly from what's available for purchase, as we are continually improving our home design and material selection. Talk to a Sales Representative for more information.*