

Each beautifully designed room is on display in the open-concept Mackenzie. The classic Scarlett O'Hara staircase keeps the master suite separate from the rest of the second floor and adds more privacy.

The following items in the Mackenzie Model Home are available as additional investments through the Minto Design Centre:

Great Room

- Fireplace mantel not installed
- Designer Selected black slate surround floor to ceiling (discontinued)
- Engineered white oak hardwood flooring
- Decorative ceiling
- LED pot lights

Den

- Engineered white oak hardwood flooring
- 9-panel French doors (discontinued)
- LED pot lights

Dining Room

- Engineered white oak hardwood flooring
- Decorative ceiling
- Urban Modern Collection crown moulding
- LED pot lights

Kitchen and Breakfast Area

- Flex Plan: Optional Kitchen Layout
- Pot and pan drawers
- Designer Selected backsplash
- Two-toned flat panel cabinetry and hardware
- Flip door with textured glass
- Quartz countertop
- Extended cabinetry (discontinued)
- Under counter bar fridge
- Designer Selected ceramic flooring
- Terrace doors in lieu of patio door
- Open shelves in kitchen millwork
- LED pot lights
- LED puck lights

Upper Hall

- Engineered white oak hardwood flooring
- Insulated LED pot lights

Master Bedroom

- Engineered white oak hardwood flooring
- Decorative ceiling
- Urban Modern Collection crown moulding
- Insulated LED pot lights

Master Bedroom Ensuite

- Flex Plan: Optional Ensuite Layout
- Designer Selected black slate flooring
- Flat panel cabinetry and hardware
- Quartz countertop
- Designer Selected shower ceramic wall tiles
- Designer Selected ceramic base with seamless glass shower door
- Insulated LED pot lights
- Door to water closet

Bedrooms

- Carpet with high density foam underpad

Bedroom #2 Ensuite

- Designer Selected ceramic flooring
- Flat panel cabinetry and hardware
- Quartz countertop
- Designer Selected shower ceramic wall and mosaic wall
- Corian seat in shower
- Designer Selected ceramic shower base with seamless glass door
- Insulated LED pot lights

Bathroom #2

- Designer Selected ceramic flooring
- Flat panel cabinetry and hardware
- Quartz countertop
- Designer Selected bathtub ceramic wall with accent tiles
- Double sinks

Laundry Room

- Upper cabinetry and hardware
- Designer Selected ceramic flooring

Basement

- Open oak-stained staircase with lobby
- Increased basement height (discontinued)

Powder Room

- Designer Selected ceramic flooring

Other Areas

- Engineered white oak hardwood flooring in Lower Hall
- Designer Selected black slate flooring in Foyer and Mudroom (discontinued)
- Urban Modern Collection crown moulding in Lower Hall and Foyer (discontinued)
- Exterior LED pot lights in soffit

Throughout

- Coloured window and exterior door frames
- Stained oak staircase
- Painted modern posts
- Metal spindles
- Painted modern handrails
- Interior door hardware
- Urban Modern Collection baseboards and casings
- Smooth painted ceilings on second floor
- Soft-close technology on cabinetry
- Closet sliding slab doors in Mudroom and Bedroom 2
- Staircase carpet runner

Mechanical

- Power humidifier is now included as standard
- Central air conditioning

The following items are not available through the Minto Design Centre and are displayed for decor purposes only:

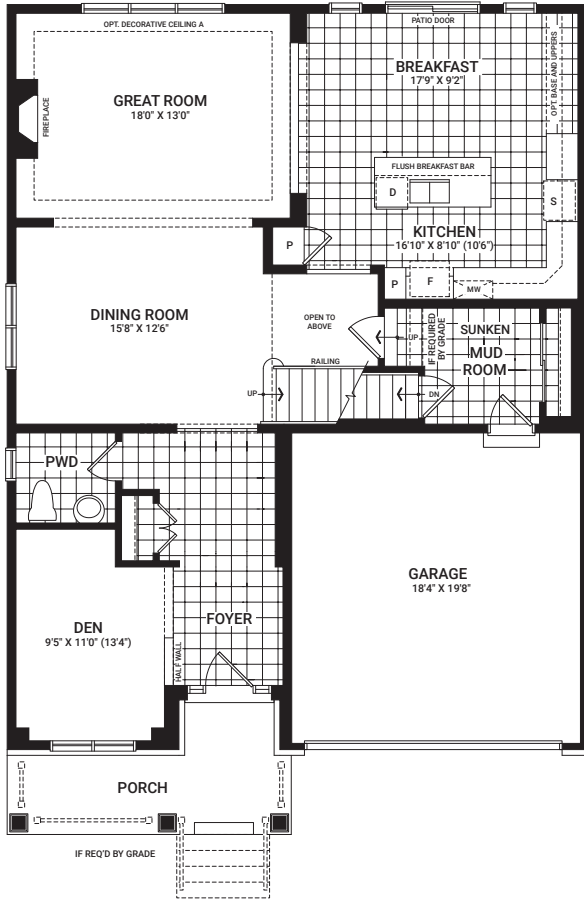
- Custom wallpaper and paint
- Eavestroughing
- Artwork and decorative mirrors
- Decorative light fixtures
- Furnishings, accessories and window treatments
- Accent tiles on ceramic flooring
- Appliances
- Hood fan in kitchen
- Designer Selected plumbing fixtures (such as sinks, faucets, toilets, shower heads, bathtubs, etc.)
- Herringbone pattern for ceramic flooring available
- Automated lights
- Audio system
- Security system
- Surveillance
- Wi-Fi-enabled upgrade package through Enercare Smarter Homes™

The Minto Design Centre offers the most current features and finishes for our homeowners. Ask your Design Consultant for more information as options are subject to change and some features may no longer be available.

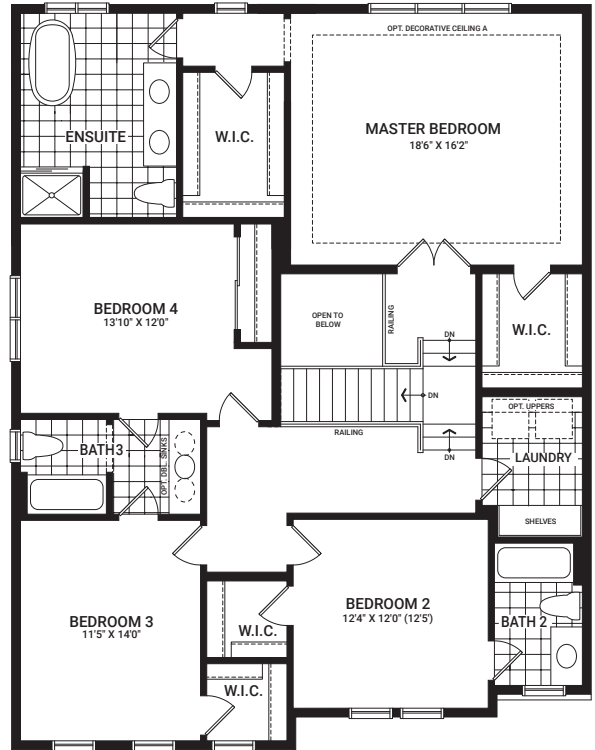
Mackenzie

2,998 sq. ft.

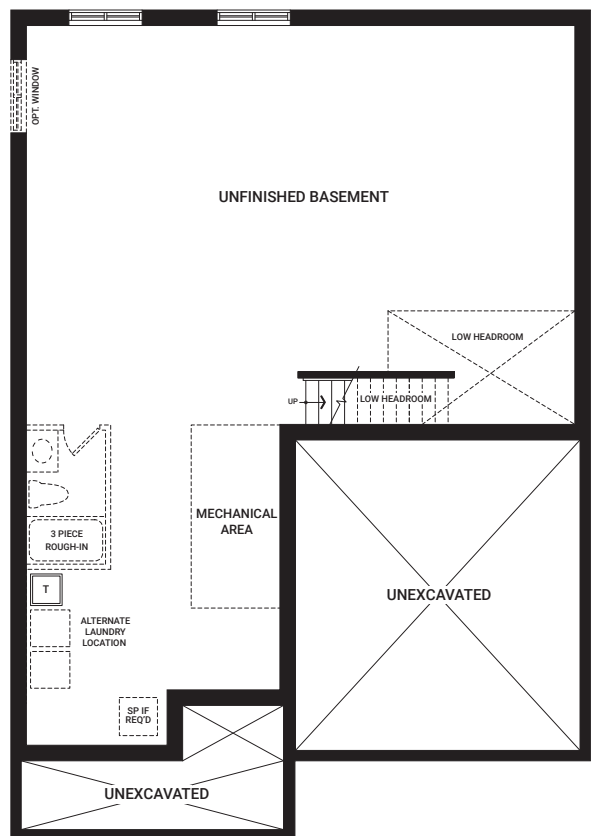
Floorplans vary depending on the phase and location of the community. Visit your Sales Centre for more information on what floorplan specifications are available to purchase in your community.



MAIN FLOOR



SECOND FLOOR



BASEMENT

I'm here to inspire. As you visit this Model Home, please keep in mind that dimensions, features, and finishes have been updated and will vary slightly from what's available for purchase, as we are continually improving our home design and material selection. Talk to a Sales Representative for more information.