



Each room in the bright and beautiful Marquette makes a statement. There is a walk-in closet for every bedroom, a jack-and-jill bath, and two ensuites. The generous kitchen and breakfast area are open to the great room, with a separate dining room around the corner.

The following items in the Marquette Model Home are available as additional investments through the Minto Design Centre:

Great Room

- Fireplace mantel not installed
- Stone floor to ceiling surround
- Engineered oak hardwood flooring
- Decorative ceiling
- LED pot lights

Den

- Engineered red oak hardwood flooring

Dining Room

- Engineered oak hardwood flooring
- Urban Modern Collection crown moulding (discontinued)
- Decorative ceiling
- LED pot lights

Kitchen and Breakfast Area

- Flex Plan: Optional Kitchen Layout
- Terrace doors in lieu of patio door
- Chimney style hood fan
- Rough-in for wall oven and microwave
- Pot and pan drawers
- Designer Selected backsplash
- Birch cabinetry and hardware
- Quartz countertop with waterfall feature on island
- Optional aluminum and glass pantry (discontinued)
- 42" high upper cabinets
- Designer Selected ceramic flooring
- Traditional crown moulding
- Upgraded window size (discontinued)
- LED pot lights
- LED puck lights

Upper Hall

- Engineered oak hardwood flooring
- Urban Modern Collection crown moulding
- LED pot lights

Master Bedroom

- Engineered oak hardwood flooring
- Decorative ceiling
- Insulated LED pot lights

Master Bedroom Ensuite

- Designer Selected ceramic flooring
- Birch cabinetry and hardware
- Quartz countertop with waterfall feature
- Freestanding soaker bathtub
- Designer Selected mosaic wall tiles
- Designer Selected ceramic show base with seamless glass door
- Insulated LED pot light

Bedrooms

- Carpet with high density foam underpad

Bedroom 2 Ensuite (Bathroom #2)

- Designer Selected ceramic flooring
- High gloss cabinetry and hardware
- Quartz countertop
- Designer Selected bathtub ceramic wall with accent tiles
- Insulated LED pot light

Bathroom #3

- Designer Selected ceramic flooring
- Cabinetry and hardware
- Quartz countertop
- Designer Selected bathtub ceramic wall with accent tiles
- Double sinks

Laundry Room

- Designer Selected ceramic flooring

Basement

- Curved oak-stained staircase with lobby

Powder Room

- Designer Selected ceramic flooring
- Designer Selected ceramic tile on wall

Other Areas

- 9' ceiling on Second Floor including window height increase
- Engineered oak hardwood flooring in Lower Hall
- Designer Selected ceramic flooring in Foyer and Mudroom
- Urban Modern Collection crown moulding in Lower Hall and Foyer (discontinued)
- LED pot lights in Lower Hall
- Exterior and Garage LED pot lights in soffit

Throughout

- Coloured window and exterior door frames
- Stained oak staircase
- Painted modern posts, spindles and handrails (discontinued)
- Rockport-style 8ft interior doors except Master Bedroom and Basement Lobby (discontinued)
- Interior door hardware
- Urban Modern Collection baseboards and casings
- Smooth painted ceiling on second floor
- Soft-close technology
- Closet sliding slab doors
- Staircase carpet runner

Mechanical

- Power humidifier is now included as standard
- Central air conditioning

The following items are not available through the Minto Design Centre and are displayed for decor purposes only:

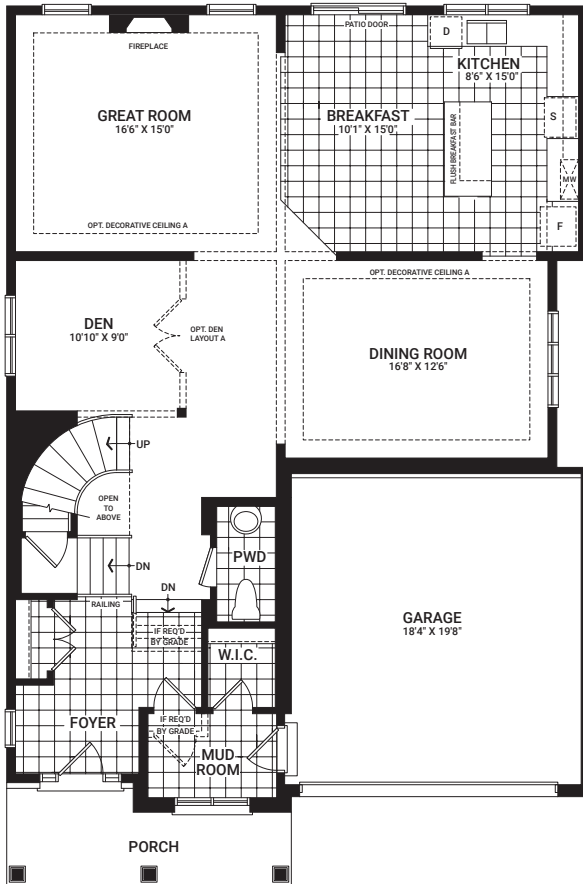
- Custom wallpaper and paint
- Eavestroughing
- Artwork and decorative mirrors
- Decorative light fixtures
- Furnishings, accessories and window treatments
- Accent tiles on ceramic flooring
- Appliances
- Custom corner elevation
- Open shelves in Laundry Room
- Designer Selected plumbing fixtures (such as sinks, faucets, toilets, shower heads, bathtubs, etc.)
- High gloss shelves and hardware
- Herringbone pattern for hardwood flooring
- Accent tiles on ceramic flooring
- Automated lights
- Audio system
- Security system
- Surveillance
- Wi-Fi-enabled upgrade package through Enercare Smarter Homes™

The Minto Design Centre offers the most current features and finishes for our homeowners. Ask your Design Consultant for more information as options are subject to change and some features may no longer be available.

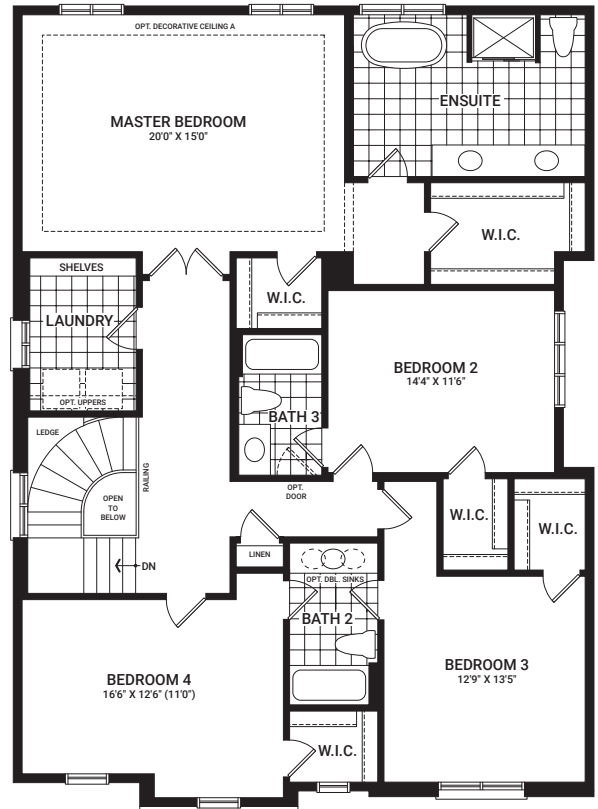
Marquette

3,219 sq. ft.

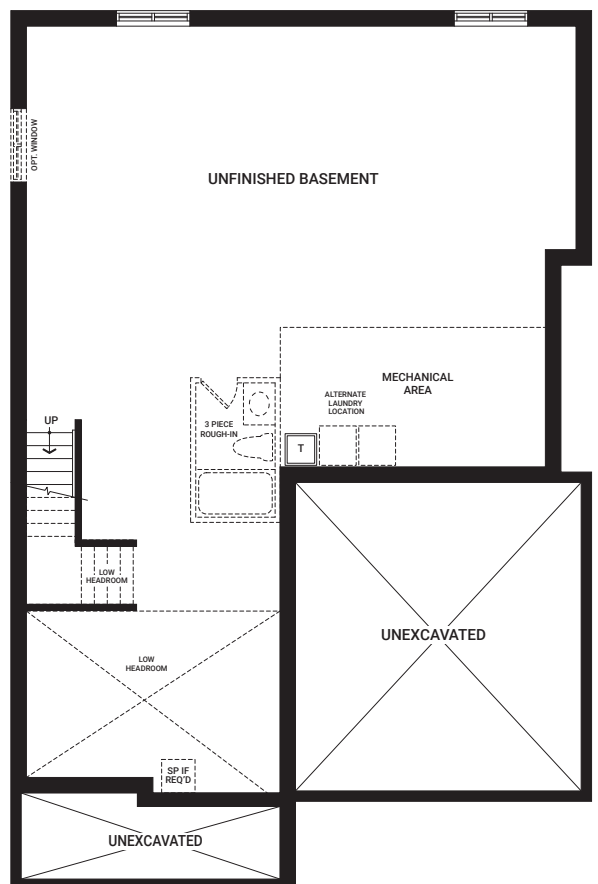
Floorplans vary depending on the phase and location of the community. Visit your Sales Centre for more information on what floorplan specifications are available to purchase in your community.



MAIN FLOOR



SECOND FLOOR



BASEMENT

I'm here to inspire. As you visit this Model Home, please keep in mind that dimensions, features, and finishes have been updated and will vary slightly from what's available for purchase, as we are continually improving our home design and material selection. Talk to a Sales Representative for more information.