



The generous layout of the Noble lends itself to the unique features of this home, such as the sunken second-floor family room and spacious open kitchen, and formal dining room separated by a servery.

The following items in the Noble Model Home are available as additional investments through the Minto Design Centre:

#### Great Room

- 46" linear fireplace
- Fireplace mantel not installed
- Designer selected tile surround
- Decorative ceiling B
- Television package including additional electrical outlet above fireplace with conduit to telephone/cable outlet in room
- Additional data network plug above fireplace

#### Kitchen

- Flex plan: Optional kitchen layout A
- Decorative hood fan
- Extended backsplash tile behind decorative hood fan
- Gas stove rough-in
- Under-cabinet puck lighting, including double shelf inside cabinetry
- Double waterfall countertop on island
- Capped outlets above island with additional switch
- Cabinetry shelves
- 42" upper cabinet doors with lift-up doors
- Two separate cabinetry selections
- Pot and pan drawers
- Glass doors in den cabinetry
- Matching interior finish in glass door cabinetry
- Additional drawer in island above recycle centre
- Recycle centre
- Designer selected undermount sink
- Designer selected faucet

#### Family Room

- 46" linear fireplace
- Designer selected tile surround
- Fireplace mantel not installed
- Television package including additional electrical outlet above fireplace with conduit to telephone/cable outlet in room
- Additional data network location above fireplace

#### Lower Hall

- Decorative bulkheads removed in foyer to lower hall
- Decorative bulkheads removed in lower hall to dining room
- Decorative bulkheads removed in lower hall to den

#### Basement

- Flex plan: Optional finished basement rec room
- Television package including additional electrical outlet at wall height with conduit to telephone/cable outlet below
- Designer selected floating floor
- Additional electrical outlet by water shut off

#### Primary Bedroom

- Decorative ceiling A
- Additional light fixture in entrance of room

#### Primary Bedroom Ensuite

- Two-sided seamless glass shower enclosure
- Shower pot light
- Ceramic tile shower base
- Designer selected accent tile on shower wall
- Designer selected accent tile behind toilet and vanity wall
- Designer selected freestanding bathtub
- Additional pot lights, including switch above bathtub and toilet
- Floating vanity

#### Bedrooms #2, #3 and #4

- Designer selected carpet and underpad

#### Bathroom #2

- Floating vanity

#### Bathroom #3

- 5' shower in lieu of bathtub with ceramic tile shower base
- Designer selected shower door with matte black trim

#### Powder Room

- Designer selected pedestal sink

#### Exterior

- Look-out lot condition including large deck
- Additional exterior pot lights
- Additional soffit plugs on second storey
- Designer selected front door hardware
- Exterior window colour in black

#### Home Technology

- Built in ceiling speakers
- Audio system

#### Laundry Room

- Optional laundry cabinets and pantry

#### Mechanical

- Central air conditioning
- Power humidifier

#### Throughout

- Designer selected tile
- Designer selected hardwood
- LED potlights
- Interior door hardware
- Interior door style
- Designer selected kitchen, bathroom and laundry room cabinetry
- Designer selected cabinetry hardware
- Soft close technology on all cabinetry
- Quartz countertops with undermount sinks
- Designer selected faucets
- Designer selected toilets
- Interior baseboards and door/window casings

#### Other Areas

- Oak main staircase with black metal spindles, oak handrail and posts
- Carpet runner on main staircase
- Open stair to basement including removal of basement door and surrounding walls/bulkhead
- Oak basement staircase with black metal spindles, oak handrail and posts
- Carpet runner on basement staircase
- Additional railing and spindles on basement staircase
- Central vac completion in garage
- 8' doors on main floor
- Smooth ceilings on second floor & basement

The following items are not available through the Minto Design Centre and are displayed for decor purposes only:

- Custom side elevation "D" added for streetscape enhancement due to the location of this home within the community, including additional brickwork, siding and transitions
- Custom wallpaper and paint
- Artwork and decorative mirrors
- Decorative light fixtures
- Furnishings, accessories and window treatments
- Appliances

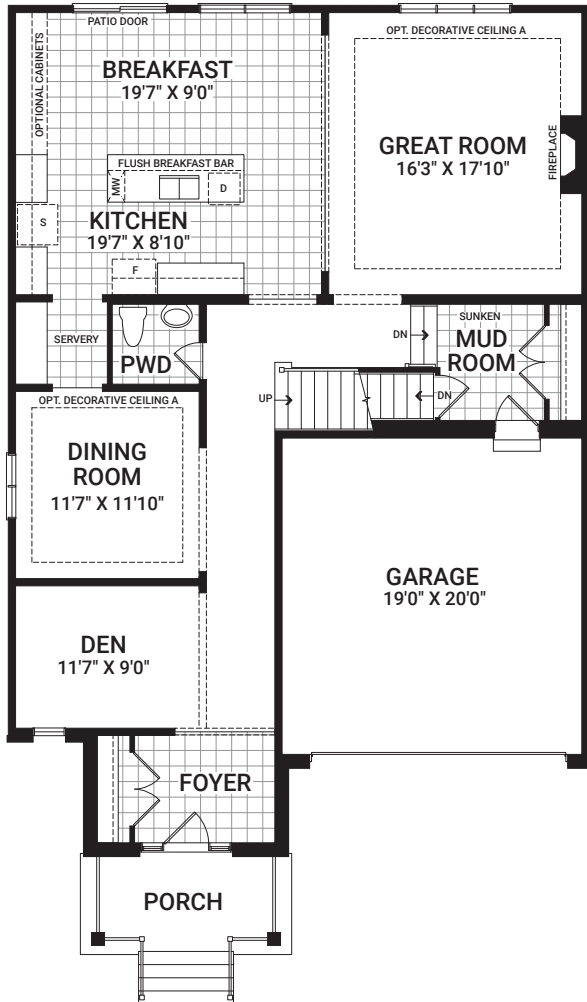
- Painted floor in storage and mechanical rooms in basement
- Denson HVAC system which includes ports on ceiling, elimination of heating vents and cold air returns, and reduction of bulk head and wall sizing
- Telecom boxes in mechanical room
- Basement insulation system including drywall on all exterior walls in mechanical/and or storage rooms

- Eavestroughing
- Wi-Fi-enabled upgrade package through Enercare Smarter Homes™ (cameras, switches, water shut off valve, security system, automated lighting)
- Shower frame enclosure colour in Primary Bedroom Ensuite

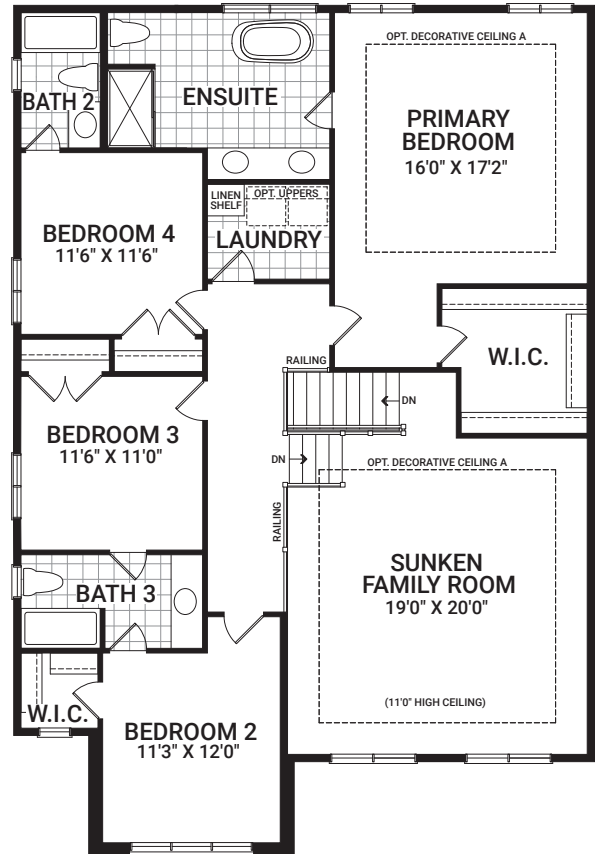
# Noble

3,266 sq. ft.

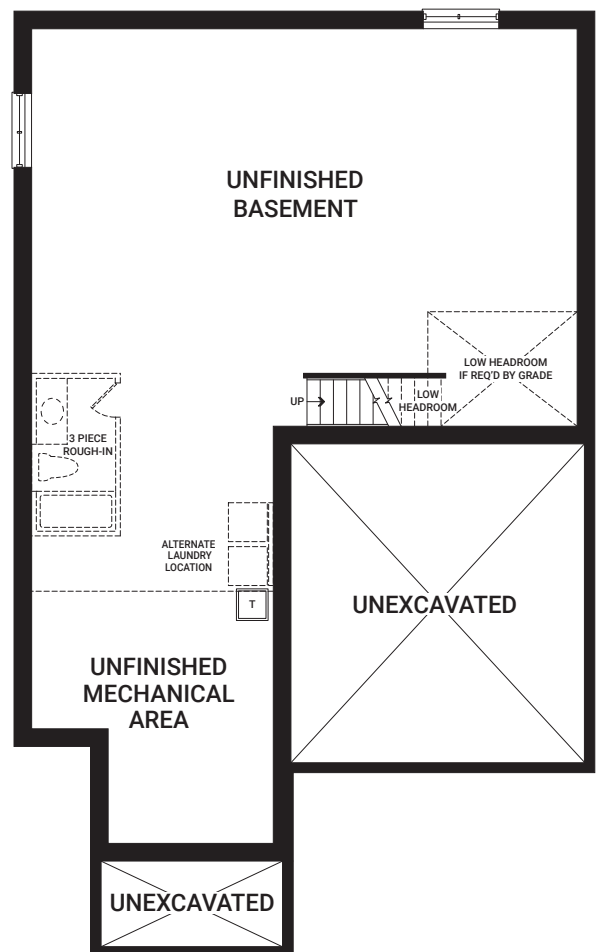
Floorplans vary depending on the phase and location of the community. Visit your Sales Centre for more information on what floorplan specifications are available to purchase in your community.



MAIN FLOOR



SECOND FLOOR



BASEMENT

*I'm here to inspire. As you visit this Model Home, please keep in mind that dimensions, features, and finishes have been updated and will vary slightly from what's available for purchase, as we are continually improving our home design and material selection. Talk to a Sales Representative for more information.*