

# Clairmont Model Home

36' Single Family Home – Elevation A

An elegant mix of porcelain, metals and woods deliver a modern industrial aesthetic in the Clairmont. Find respite and work-from-home convenience in the second floor multi-functional loft area.

The following items in the Clairmont Model Home are available as additional investments through the Minto Design Centre:

## Great Room

- Designer selected fireplace surround installed in horizontal staggered pattern
- Designer selected hardwood
- Fireplace mantel deleted
- Flex Plan: great room wall opening
- Television package including additional electrical outlet on wall with conduit to telephone/cable outlet in room

## Kitchen

- 39" upper cabinet doors
- Additional 3" wide end gable on island
- Designer selected backsplash tile
- Designer selected hardwood
- Enlarged fridge opening
- Fridge gable
- Kitchen light fixture relocated to above island
- Clear glass cabinet doors with matching interior finish inside cabinet
- Flex Plan: Kitchen Layout C
- Plumbing rough-in for fridge
- Pots and pans drawers
- Floating shelves in lieu of upper cabinets

## Dining Room

- Designer selected hardwood

## Foyer

- Designer selected tile floor
- Sliding slab closet doors

## Main Floor Hallway

- Designer selected hardwood

## Primary Bedroom

- Designer selected hardwood

## Bedroom 2

- Designer selected carpet with upgraded chip foam underpad
- Sliding slab closet doors

## Bedroom 3

- Designer selected carpet with upgraded chip foam underpad
- Sliding slab closet doors

## Ensuite

- Two wall seamless glass shower enclosure with swing door and chrome trim including full side wall
- Ceramic tile shower base
- Designer selected shower wall tile
- Designer selected tile floor
- Double sinks in vanity including full length mirror and two bathroom vanity lights

## Bath 2

- Designer selected tile floor
- Designer selected tub wall tile

## Powder Room

- Designer selected tile floor

## Laundry Room

- 36" upper cabinet doors
- Designer selected tile floor

## Loft

- Designer selected hardwood
- Added cable outlet

## Basement

- Designer selected floating floor
- Flex Plan: finished basement 3-piece bathroom
- Flex Plan: finished basement rec room and bedroom
- Added cable outlet

## Basement Bath

- Designer selected tile floor
- Designer selected tub wall tile

## Basement Bedroom

- Designer selected carpet with upgraded chip foam underpad
- Sliding slab doors

## Other Areas

- Smooth ceilings in second floor and finished basement
- Increased second floor ceiling height to 9'
- Insulated standard garage door, with fully insulated garage
- Oak basement staircase with stainless steel spindles, oak stained post and modern handrail with stainless steel supports
- Oak main staircase with stainless steel spindles, oak stained post and modern handrail with stainless steel supports
- Exterior potlights
- Carpet runner on staircase with upgraded chip foam underpad

## Throughout

- Designer selected cabinets with soft close doors and drawers
- Designer selected bathtubs
- Designer selected cabinet hardware
- Designer selected faucets
- Designer selected interior door hardware, interior door style
- Designer selected quartz countertops with undermount sinks
- Designer selected toilets
- Increased interior passage door height to 8'
- LED pot lights

## Home Technology

- Audio System
- Ceiling speakers

## Mechanical

- Central air conditioning

## Exterior

- Designer selected exterior door hardware

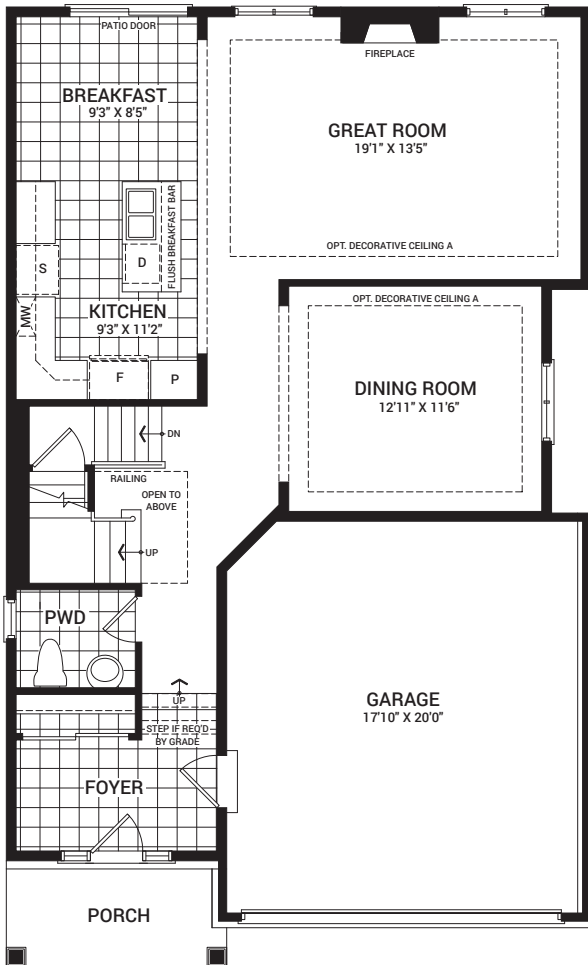
The following items are not available through the Minto Design Centre and are displayed for decor purposes only:

- Appliances
- Artwork and decorative mirrors
- Designer selected light fixtures
- Designer selected paint
- Eavestroughs
- Furnishing, accessories and window treatments
- Painted floor in unfinished areas in basement
- Telecom boxes in mechanical room
- Wi-fi enabled items through Enercare™ (cameras, smart home water shut off valve, security system, automated lighting)
- Humidifier bypass switch
- The Minto Design Centre offers the most current features and finishes for our homeowners. Ask your Design Consultant for more information as options are subject to change and some features may no longer be available.

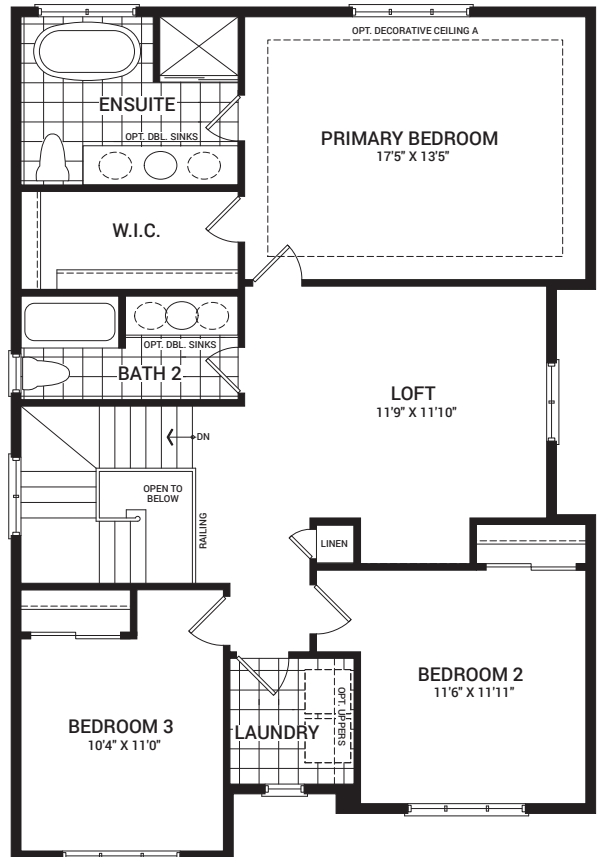
# Clairmont

2,171 sq. ft.

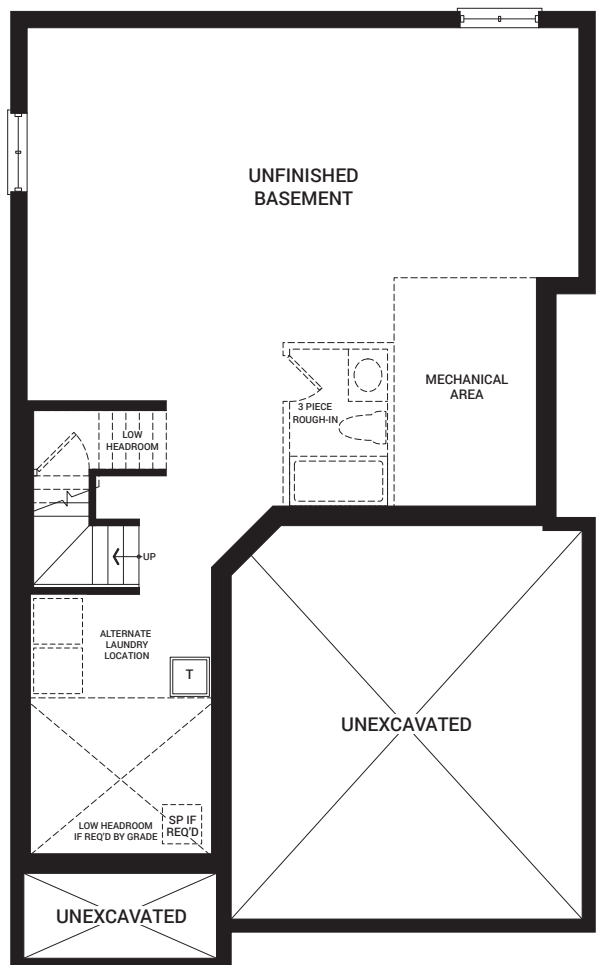
Floorplans vary depending on the phase and location of the community. Visit your Sales Centre for more information on what floorplan specifications are available to purchase in your community.



MAIN FLOOR



SECOND FLOOR



BASEMENT

*I'm here to inspire. As you visit this Model Home, please keep in mind that dimensions, features, and finishes have been updated and will vary slightly from what's available for purchase, as we are continually improving our home design and material selection. Talk to a Sales Representative for more information.*