

Quinton with Guest Suite Model Home

43' Single Family Home – Elevation C

Pulling on nature in materials and colours, the Quinton sets the stage for a relaxed urban farmhouse feel. Adorned with multi-use spaces and optional bedrooms on every floor, for multi-generational living.

The following items in the Quinton Model Home are available as additional investments through the Minto Design Centre:

Great Room

- Designer selected fireplace surround
- Designer selected hardwood
- Television package including additional electrical outlet on wall with conduit to telephone/cable outlet in room

Den

- Designer selected hardwood

Living Room

- Designer selected hardwood

Kitchen

- 42" upper cabinet doors
- Decorative hood fan
- Designer selected backsplash wall tile
- Designer selected hardwood
- Extend backsplash behind 30" hood fan
- Fridge gable
- Kitchen light fixture relocated to above island
- LED puck lights
- Plumbing rough-in for fridge
- Pots and pans drawer
- Rough-in for gas stove
- Kitchen cabinets deleted on either side of hood fan

Dining Room

- Designer selected hardwood

Foyer

- Designer selected tile floor installed in herringbone pattern
- Upgraded entry step to stained oak wood steps
- Sliding slab closet doors

Primary Bedroom

- Designer selected hardwood

Bedroom 2

- Designer selected carpet with upgraded chip foam underpad
- Sliding slab doors

Bedroom 3

- Sliding slab closet doors
- Designer selected carpet with upgraded chip foam underpad

Bedroom 4

- Sliding slab closet doors
- Designer selected carpet with upgraded chip foam underpad

Bedroom 5

- Shower door trim in matte black
- Designer selected carpet with upgraded chip foam underpad

Ensuite

- Shower door trim in matte black
- Designer selected shower floor tile
- Designer selected shower wall tile
- Designer selected tile floor
- Double sinks in vanity including full length mirror and two bathroom vanity lights

Bath 2

- Designer selected tile floor
- Designer selected tub wall tile

Bath 3

- Designer selected tile floor installed in staggered 1/3 pattern
- Designer selected tub wall tile

Bath 4

- 4' shower in lieu of bathtub with bench
- 48" shower door in matte black
- Designer selected shower wall tile
- Designer selected tile floor installed in staggered 1/3 pattern

Powder Room

- Designer selected tile floor
- Designer selected tile floor installed in herringbone pattern
- Designer selected feature accent wall tile installed in staggered pattern

Laundry Room

- Designer selected tile floor
- Rough-in for gas dryer
- 36" inch upper cabinets

Guest Suite

- Designer selected hardwood
- Sliding slab closet doors

Basement

- Flex Plan: Basement 3-piece bath
- Flex Plan: Finished basement rec room and bedroom
- Television package including additional electrical outlet on wall with conduit to telephone/cable outlet in room
- Designer selected floating floor

Basement Bath

- Designer selected tile floor installed in staggered 1/3 pattern
- Designer selected tub wall tile installed in staggered pattern

Basement Bedroom

- Designer selected floating floor
- Sliding slab doors

Other Areas

- Smooth ceilings in second floor and finished basement
- Increased second floor ceiling height to 9'
- Insulated woodtone long embossed panel garage door, with fully insulated garage
- Oak basement staircase with black metal spindles and oak stained post and modern handrail with black metal supports
- Oak main staircase with black metal spindles and oak stained post and modern handrail with black metal supports.
- Exterior potlights
- Carpet runner on staircase with upgraded chip foam underpad

Second Floor Hallway

- Designer selected hardwood

Throughout

- Designer selected bathtubs
- Designer selected cabinet hardware
- Designer selected faucets
- Designer selected interior door hardware
- Designer selected interior trim package
- Designer selected kitchen, laundry room, and bathroom cabinetry with soft close doors and drawers
- Designer selected quartz countertops with undermount sinks
- Designer selected toilets
- Increased interior passage door height to 8'
- LED pot lights

Home Technology

- Audio System
- Ceiling speakers

Mechanical

- Central air conditioning
- Gas line increased to 1 1/4" diameter

Exterior

- Designer selected exterior door hardware
- Upgraded window colour, excludes the basement windows

The following items are not available through the Minto Design Centre and are displayed for decor purposes only:

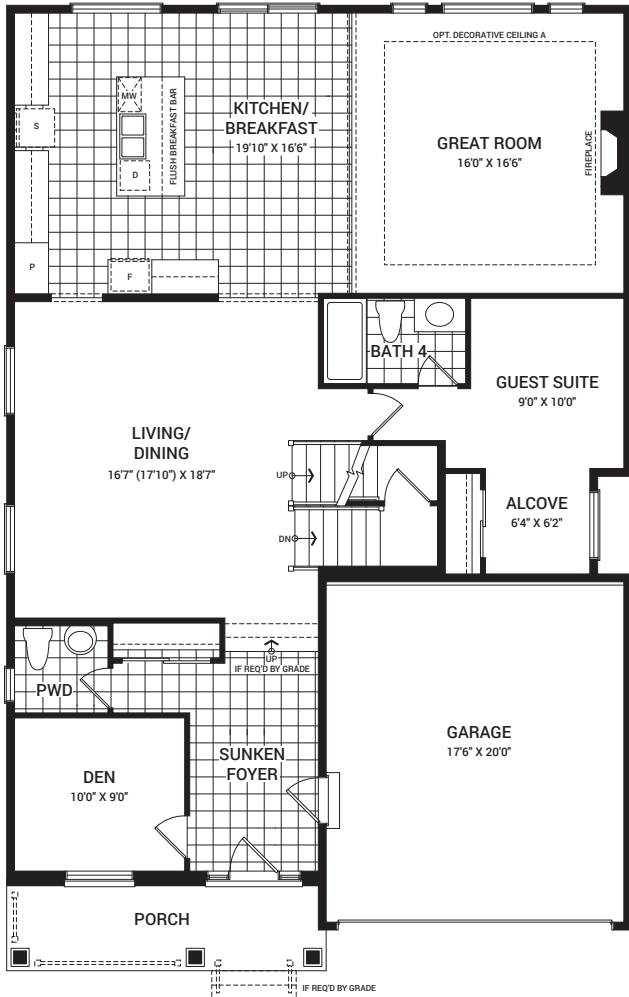
- Appliances
- Artwork and decorative mirrors
- Designer selected light fixtures
- Designer selected paint
- Eavestroughs
- Furnishing, accessories and window treatments
- Painted floor in unfinished areas in basement
- Telecom boxes in mechanical room
- Wi-fi enabled items through Enercare™ (cameras, smart home water shut off valve, security system, automated lighting)
- Humidifier bypass switch

The Minto Design Centre offers the most current features and finishes for our homeowners. Ask your Design Consultant for more information as options are subject to change and some features may no longer be available.

Quinton with Guest Suite

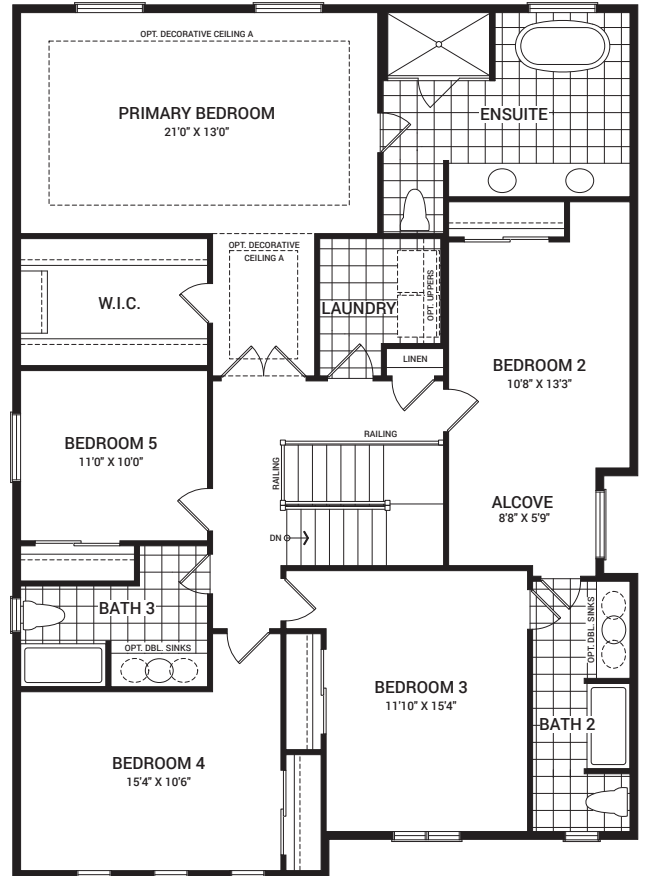
3,418 sq. ft.

Floorplans vary depending on the phase and location of the community. Visit your Sales Centre for more information on what floorplan specifications are available to purchase in your community.

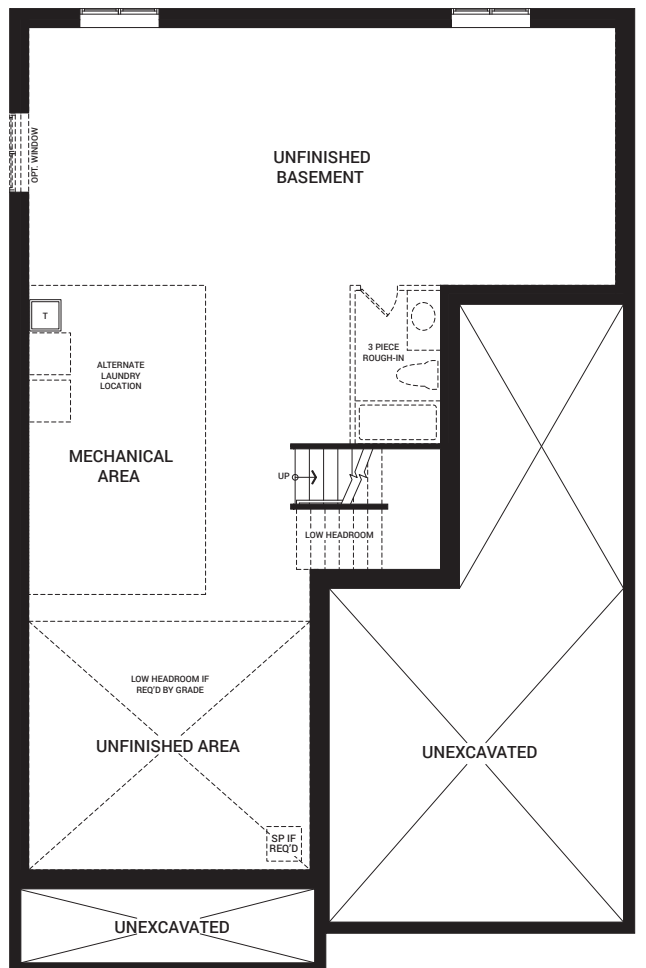


MAIN FLOOR

I'm here to inspire. As you visit this Model Home, please keep in mind that dimensions, features, and finishes have been updated and will vary slightly from what's available for purchase, as we are continually improving our home design and material selection. Talk to a Sales Representative for more information.



SECOND FLOOR



BASEMENT



All plans, dimensions, and specifications are subject to change without notice. Actual usable floor space may vary from the stated floor area. Column locations, window locations, and sizes may vary and are subject to change without notice. Renderings are artist's concept only. E.&O.E. May 2021

*Ask our Sales Agents about other options for this home.